

# 1553 Chester Pike, Unit A

## Property Features

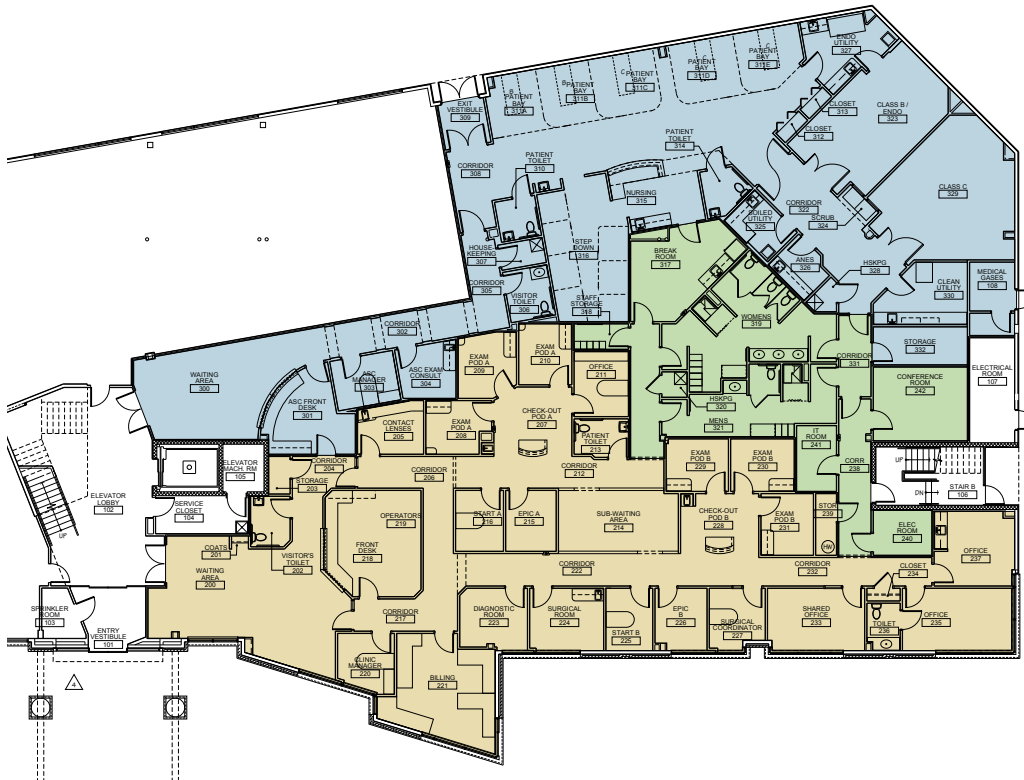
Ridley Township, PA 19022

- + ±10,670 SF medical office condominium - First Floor
- + Two (2) Operatory Surgery Center along with new Medical Office space
- + Ideally located on Chester Pike - Easy access to I-95 and I-476
- + 4.5/1000 SF - Above Market Parking Ratio
- + Serviced by SEPTA Bus Route 114

±10,670 SF Medical Office Space Available For Sale or Lease in Ridley Township, PA



## Floor Plan

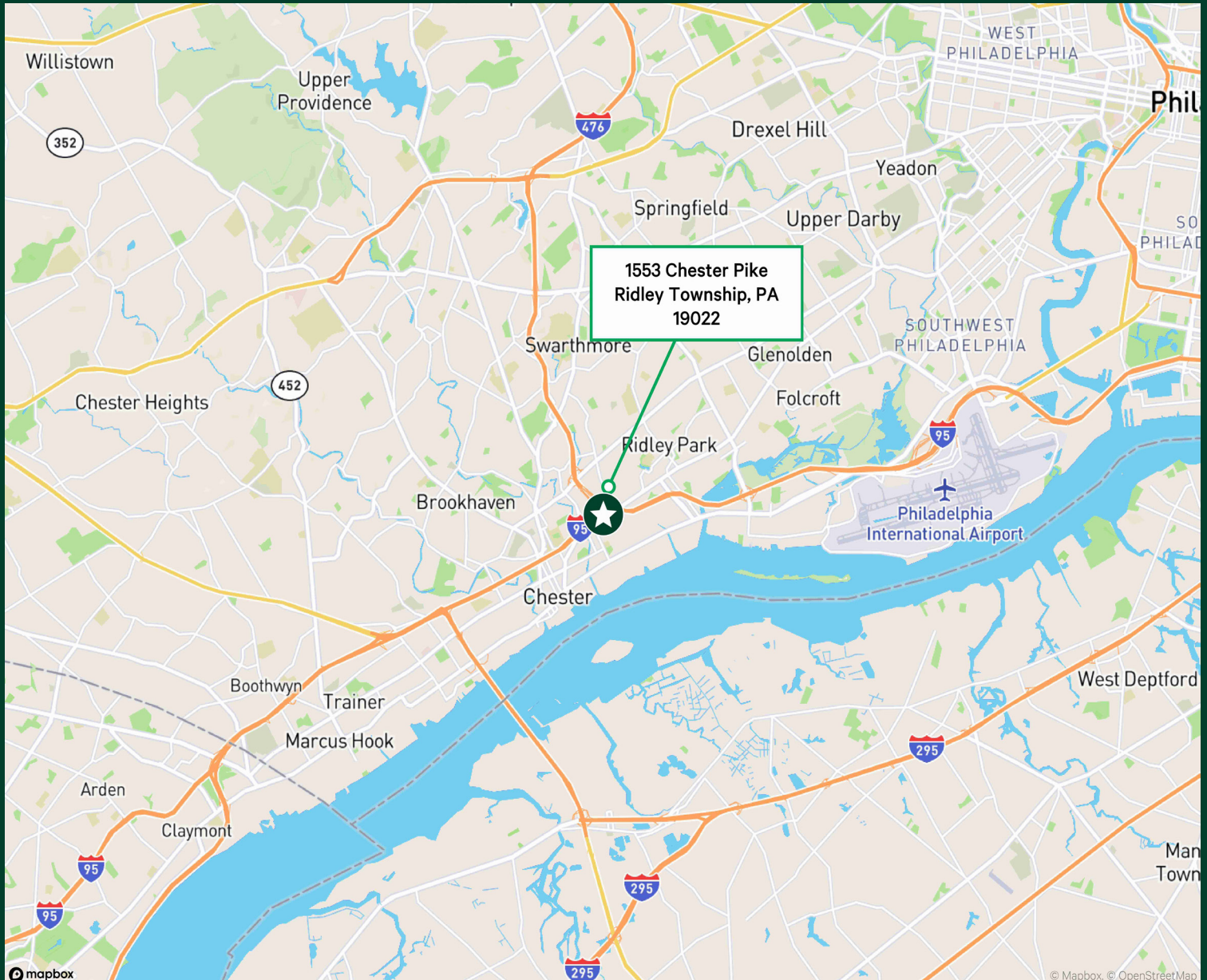


© 2026 CBRE, Inc. All rights reserved. This information has been obtained from sources believed reliable, but has not been verified for accuracy or completeness. You should conduct a careful, independent investigation of the property and verify all information. Any reliance on this information is solely at your own risk. CBRE and the CBRE logo are service marks of CBRE, Inc. All other marks displayed on this document are the property of their respective owners, and the use of such logos does not imply any affiliation with or endorsement of CBRE. Photos herein are the property of their respective owners. Use of these images without the express written consent of the owner is prohibited.



**1553 Chester Pike**  
Ridley Township, PA 19022

**For Sale Or Lease**



## Contact Us

**Stephen Kriz**

Senior Vice President  
+1 610 251 5177  
stephen.kriz@cbre.com  
Licensed: PA

**CBRE, Inc.**

555 E. Lancaster Ave, Suite 120  
Radnor, PA 19087  
+1 610 251 0820  
Licensed Real Estate Broker

© 2026 CBRE, Inc. All rights reserved. This information has been obtained from sources believed reliable, but has not been verified for accuracy or completeness. You should conduct a careful, independent investigation of the property and verify all information. Any reliance on this information is solely at your own risk. CBRE and the CBRE logo are service marks of CBRE, Inc. All other marks displayed on this document are the property of their respective owners, and the use of such logos does not imply any affiliation with or endorsement of CBRE. Photos herein are the property of their respective owners. Use of these images without the express written consent of the owner is prohibited.

**CBRE**