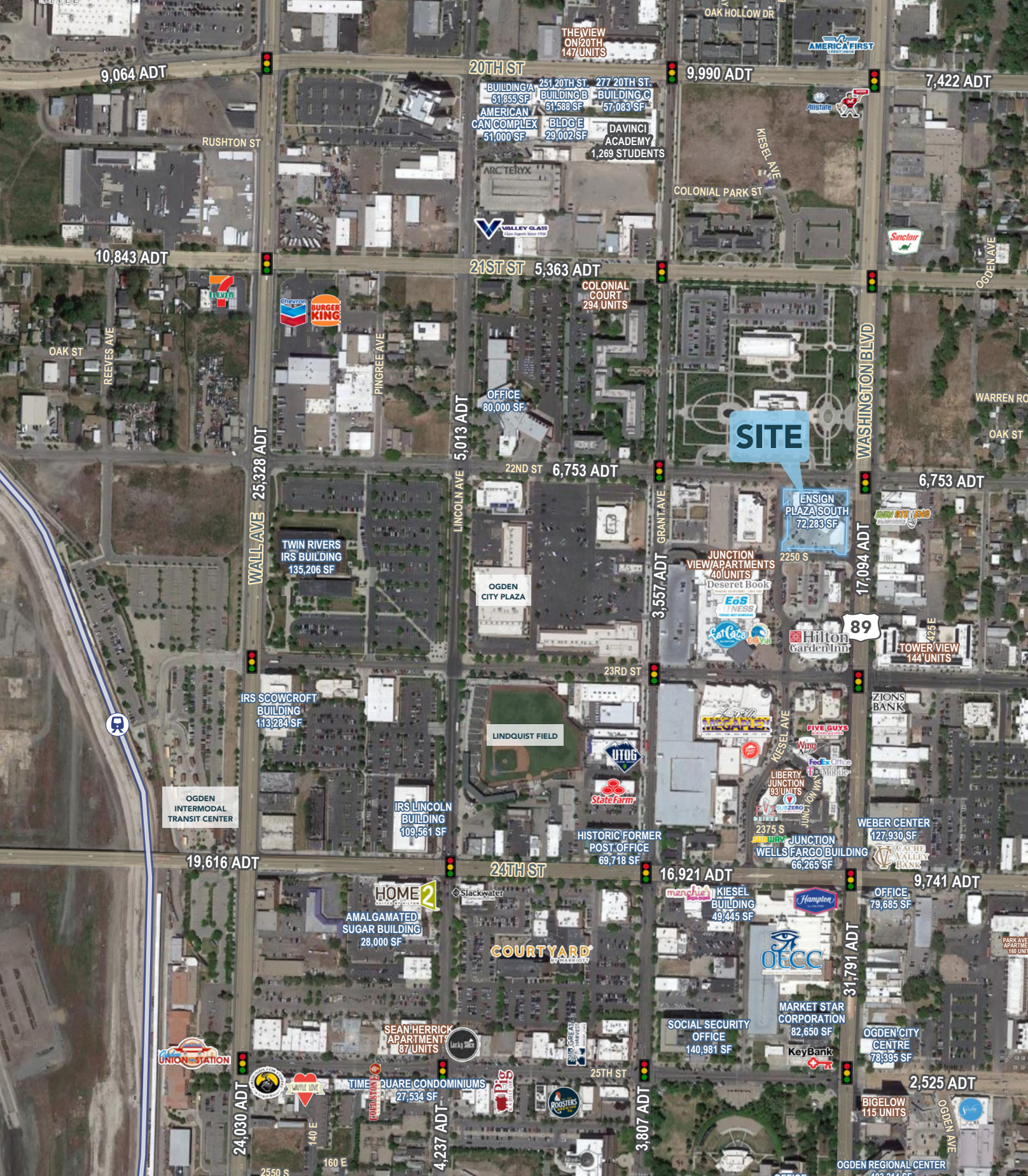


# ENSIGN PLAZA SOUTH



FOR SALE OR LEASE



## PROPERTY DETAILS

2225 WASHINGTON BOULEVARD, OGDEN, UTAH 84401

LEASE RATE: \$24.00/SF FULL SERVICE

- Class A exterior and common features
- 3:1,000 SF parking ratio
- 1:1,000 on-site underground parking with electric vehicle charging stations at additional cost
- Additional common parking throughout The Junction development
- Main Floor
  - » Direct access convenience
  - » Eyebrow signage available
  - » Suite 175: 1,733 RSF available
- Third Floor
  - » Suite 310: 3,671 RSF available



MOUNTAIN WEST  
COMMERCIAL REAL ESTATE

**CHRIS FALK, CCIM, SIOR**  
cfalk@mwcre.com  
direct 385.429.5500  
[View Profile](#)

**BRAXTON WILLIE, CCIM**  
bwillie@mwcre.com  
direct 385.429.5501  
[View Profile](#)

FULL SERVICE  
COMMERCIAL REAL ESTATE  
1755 East 1450 South  
Clearfield, UT 84015  
Office 801.578.5580  
[www.mwcre.com](http://www.mwcre.com)



MOUNTAIN WEST  
COMMERCIAL REAL ESTATE

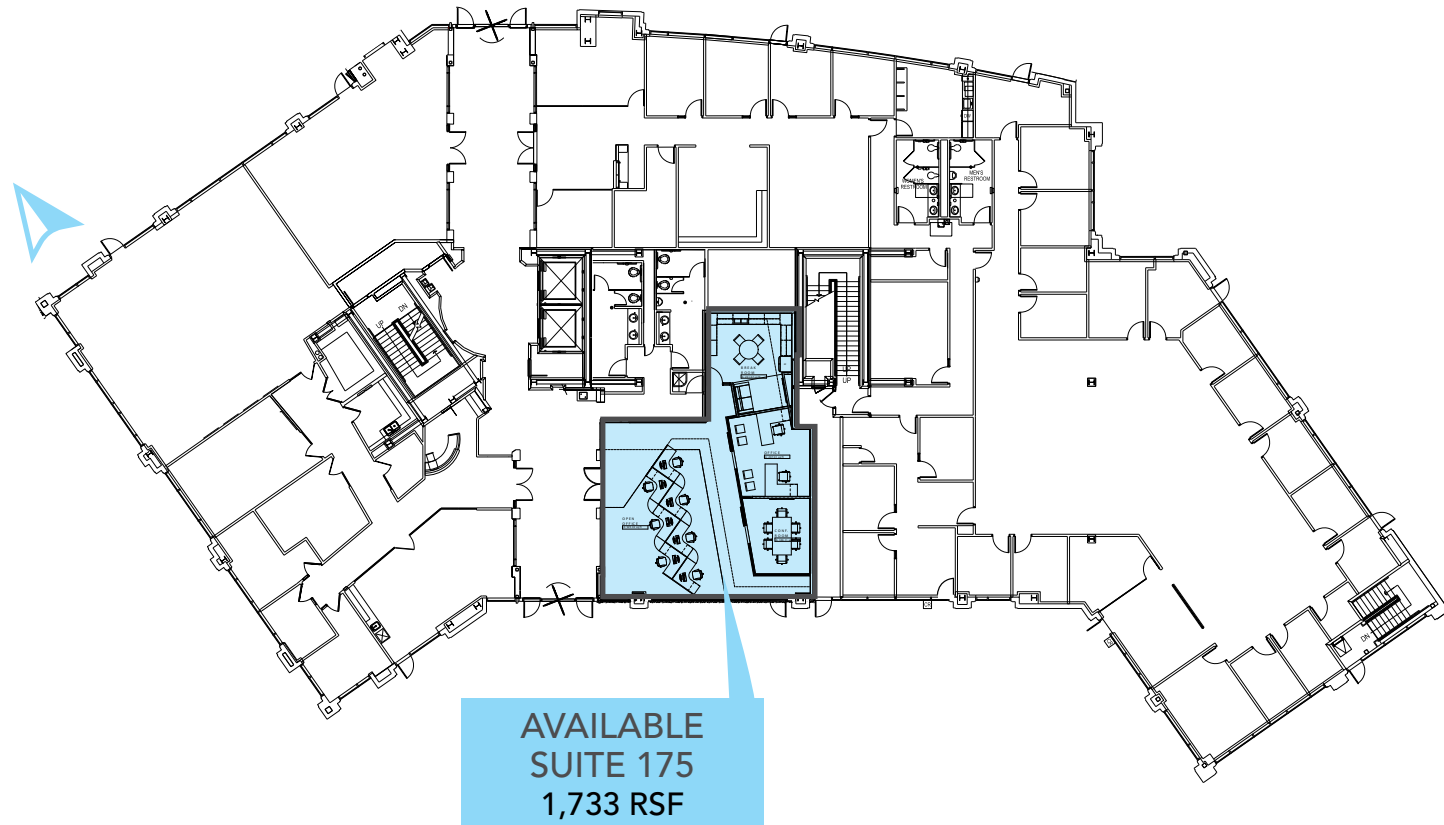
**CHRIS FALK, CCIM, SIOR**  
cfalk@mwcre.com  
direct 385.429.5500  
[View Profile](#)

**BRAXTON WILLIE, CCIM**  
bwillie@mwcre.com  
direct 385.429.5501  
[View Profile](#)

FULL SERVICE  
COMMERCIAL REAL ESTATE  
1755 East 1450 South  
Clearfield, UT 84015  
Office 801.578.5580  
[www.mwcre.com](http://www.mwcre.com)



FIRST FLOOR



THIRD FLOOR



MOUNTAIN WEST  
COMMERCIAL REAL ESTATE

**CHRIS FALK, CCIM, SIOR**  
cfalk@mwcre.com  
direct 385.429.5500  
[View Profile](#)

**BRAXTON WILLIE, CCIM**  
bwillie@mwcre.com  
direct 385.429.5501  
[View Profile](#)

FULL SERVICE  
COMMERCIAL REAL ESTATE  
1755 East 1450 South  
Clearfield, UT 84015  
Office 801.578.5580  
[www.mwcre.com](http://www.mwcre.com)