



BERKSHIRE HATHAWAY
HomeServices
Hudson Valley Properties
COMMERCIAL DIVISION

Walt Finnerman
Director, Commercial-Investment Properties

1100 Route 55, Suite 201, LaGrangeville, NY 12540
o: 845.227.3900 m: 845.705.0994 f: 845.473.3677
wfinnerman@bhhshudsonvalley.com



FOR SALE- 4 Acres

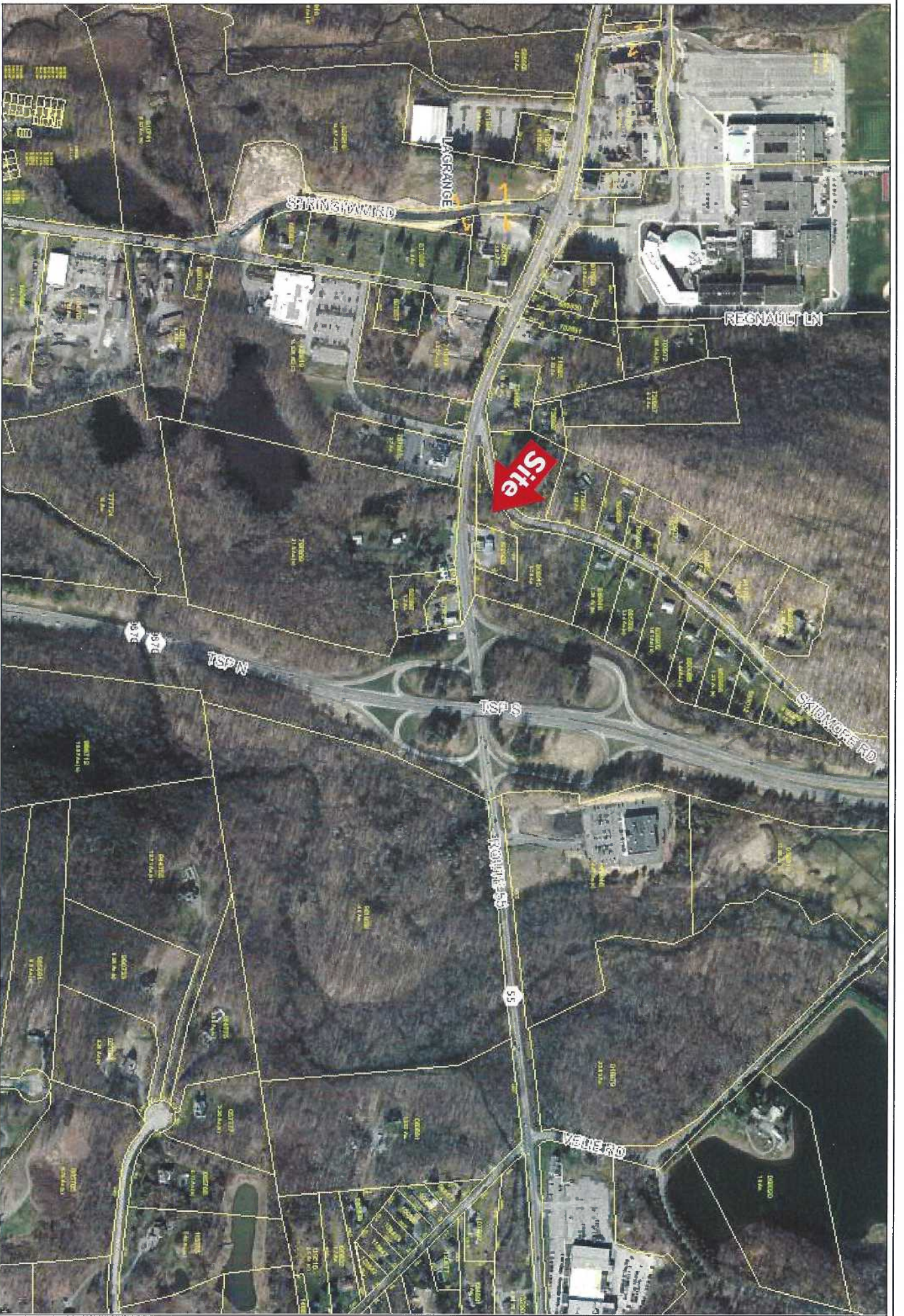
Zoned Commercial

Rt. 55 & Taconic State Parkway

LaGrangeville, NY Dutchess Co.

" IDEAL LOCATION FOR OFFICE/ BANK SITE"

- Location:** North side, Corner of Skidmore Road, Rt. 55 & Taconic State Parkway, Town of LaGrange. Located in the Town Center Zoning and close to retail stores, Arlington High School , restaurants and office buildings, beside easy off and on to the Taconic Parkway.
- Property Size;** 4 Acres
- Zoned:** Commercial: Town Center Business (TCB)
- Permits:** Retail, offices, banks, restaurants (w/o drive ups), day care, funeral home, auto parts stores.
- Utilities:** Town water, septic
- Frontage:** Rt. 55 : 488 ft.
- Offering Price:** \$595,000
- More Info,
Questions:** Call Walt @ Berkshire Hathaway (845) 227-3900
wfinnerman@bhhshudsonvalley.com

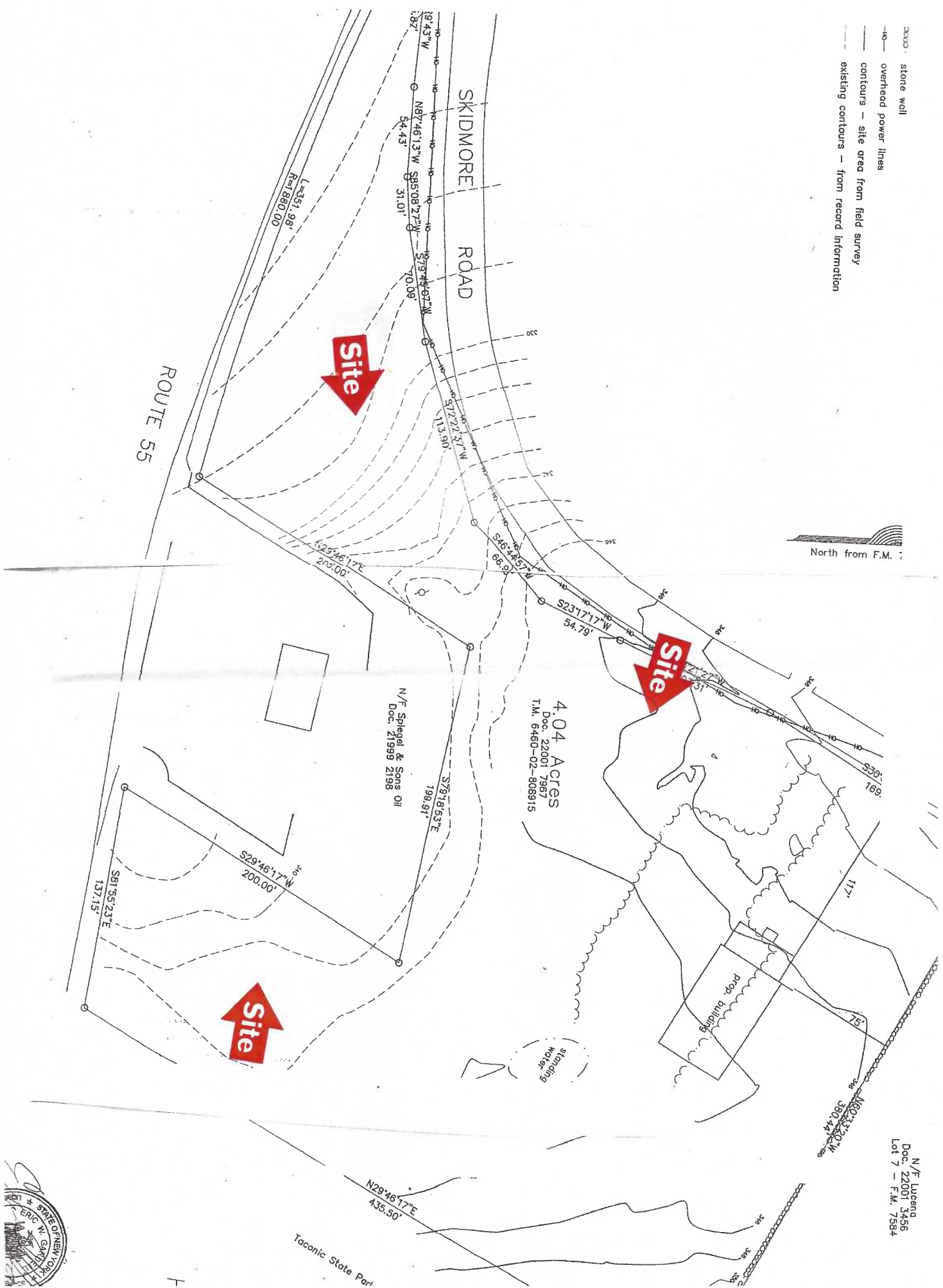


Parcel Lines
Dutchess County, NY

Printed by:
ParcelAccess



- stone wall
- overhead power lines
- contours — site area from field survey
- existing contours — from record information



4.04 Acres
Doc. 22001 7987
T.M. 6450-02-808915

N/F Signal & Sons Oil
Doc. 21999 2198

N/F Lueng
Doc. 22001 3956
Lot 7 - F.M. 7584



Taconic State Park

