

RELIGIOUS PROPERTY FOR SALE

24,300± SF TOTAL ON 3.43± AC



9801 COOPER CHURCH DR. LOUISVILLE, KY 40229

ASKING PRICE: ~~\$1,950,000~~ \$1,695,000

PROPERTY HIGHLIGHTS

RELIGIOUS FACILITY

- The facility contains a chapel built in 1900 with a more recent education wing and an auxiliary building which contains a gymnasium. The footprint of these buildings combined is approximately 15,000± SF. The basement adds an additional 7,000± SF.

RESIDENCE

- The 2,300± SF two-story home has 5 bedrooms, 2 baths and an unfinished basement.

PARCEL ID	066102640000
COUNTY	Jefferson
ZONING	Residential Single Family (R4)
# OF BUILDINGS	3
BUILDING SF	22,000± SF Religious Facility 2,300± SF Residence
ACREAGE	3.43 ± AC
PARKING	50+ Paved Spaces

FOR MORE INFORMATION, PLEASE CONTACT:

JOEDY GILLILAND

Broker

502.827.4863

joedy@signalonerealty.com



ADVISEMENT SERVICES PROVIDED BY:

MATT MESSIER, SIOR, CCIM

Partner, Managing Director

407.540.7718

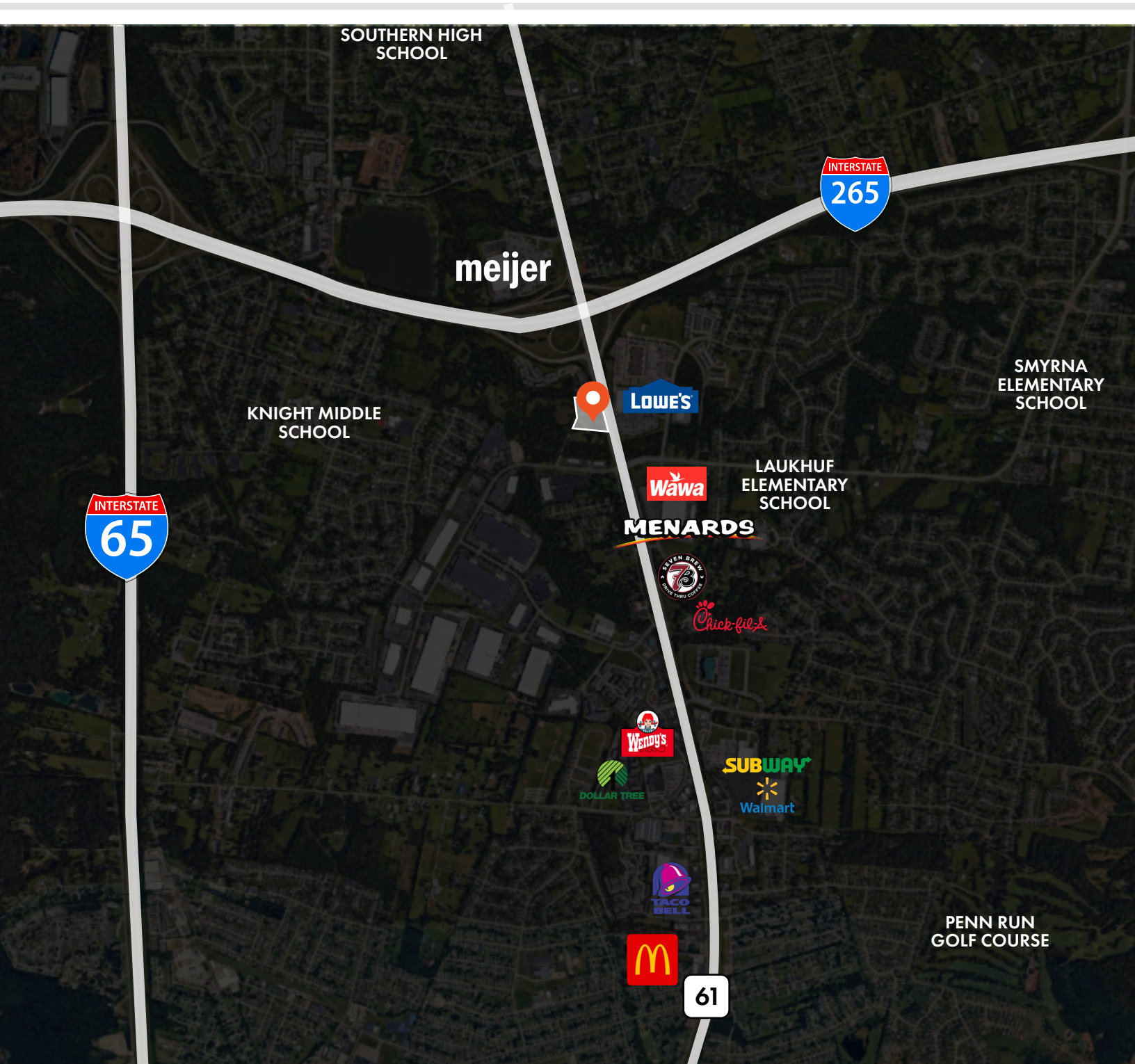
matt.messier@foundrycommercial.com



RELIGIOUS PROPERTY FOR SALE

24,300± SF TOTAL ON 3.43± AC

AERIAL & PROPERTY OUTLINE



FOR MORE INFORMATION, PLEASE CONTACT:

JOEDY GILLILAND
Broker
502.827.4863
joedy@signalonerealty.com



ADVISEMENT SERVICES PROVIDED BY:

MATT MESSIER, SIOR, CCIM
Partner, Managing Director
407.540.7718
matt.messier@foundrycommercial.com

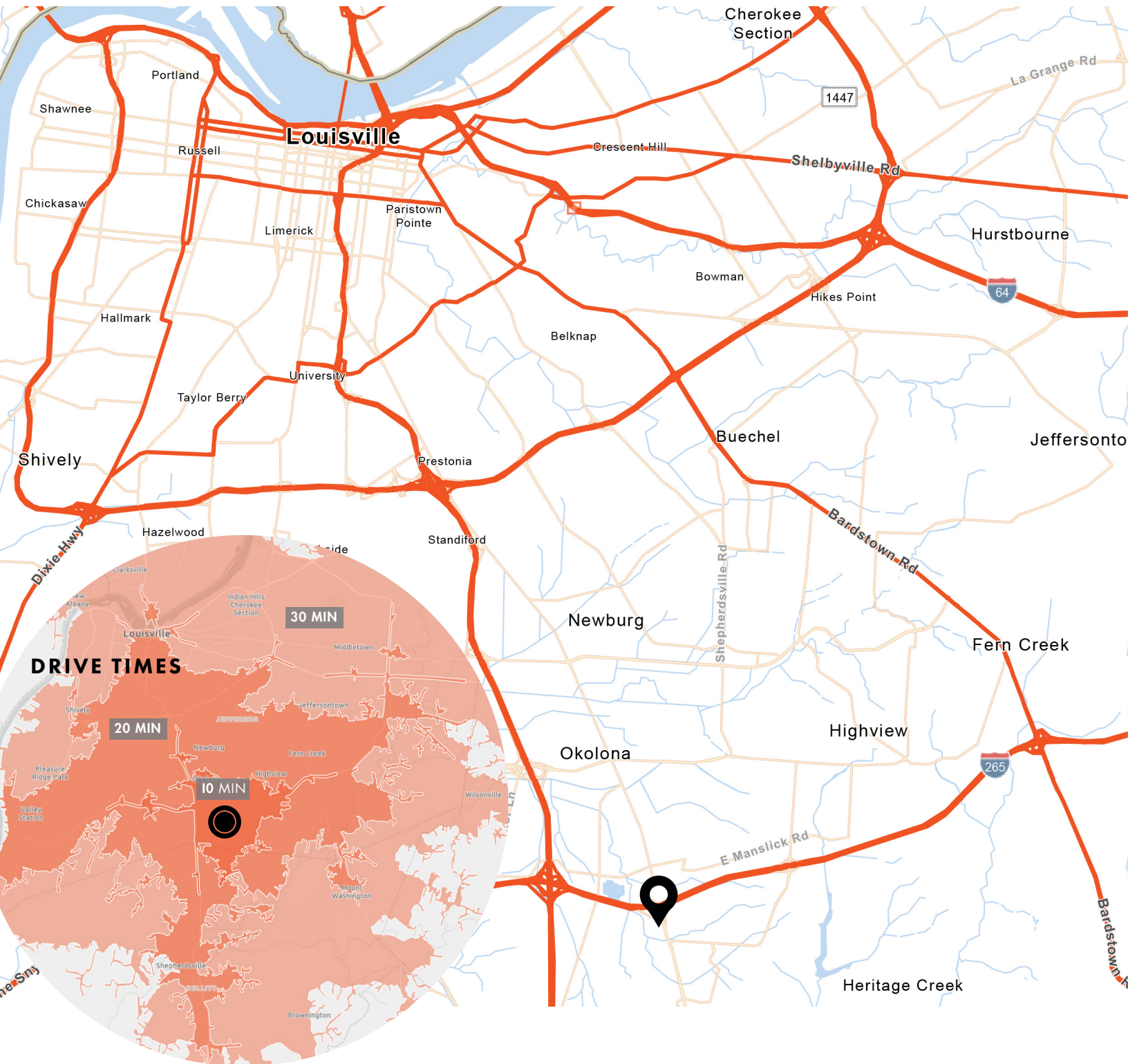


MISSION
PROPERTY
GROUP

RELIGIOUS PROPERTY FOR SALE

24,300± SF TOTAL ON 3.43± AC

LOCATION AND DRIVE TIMES



FOR MORE INFORMATION, PLEASE CONTACT:

JOEDY GILLILAND
Broker
502.827.4863
joedy@signalonerealty.com



ADVISEMENT SERVICES PROVIDED BY:

MATT MESSIER, SIOR, CCIM
Partner, Managing Director
407.540.7718
matt.messier@foundrycommercial.com



RELIGIOUS PROPERTY FOR SALE
24,300± SF TOTAL ON 3.43± AC

PROPERTY PHOTOS



SANCTUARY FROM BACK



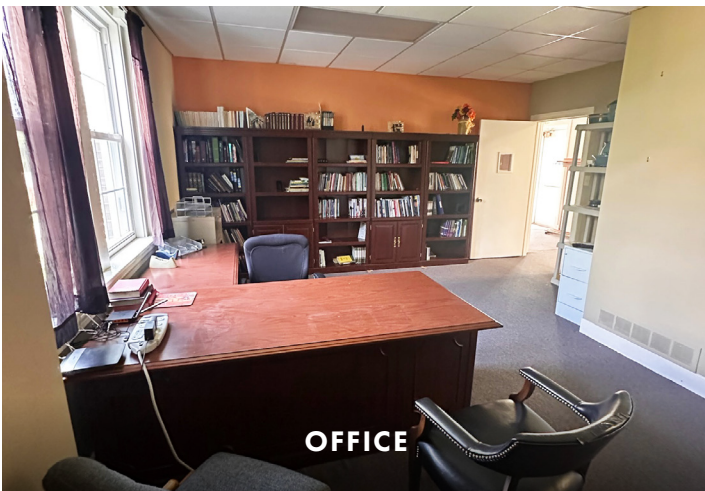
SANCTUARY FROM FRONT



PARLOR



CHOIR ROOM



OFFICE



CLASSROOM

FOR MORE INFORMATION, PLEASE CONTACT:

JOEDY GILLILAND
Broker
502.827.4863
joedy@signalonerealty.com



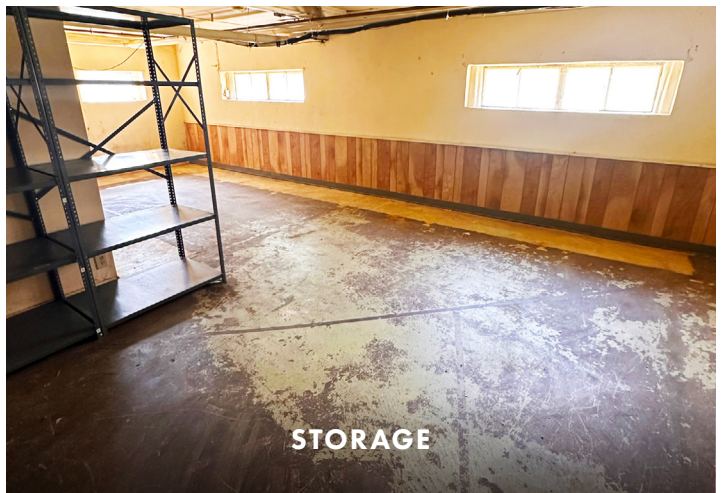
ADVISEMENT SERVICES PROVIDED BY:

MATT MESSIER, SIOR, CCIM
Partner, Managing Director
407.540.7718
matt.messier@foundrycommercial.com



RELIGIOUS PROPERTY FOR SALE
24,300± SF TOTAL ON 3.43± AC

PROPERTY PHOTOS



FOR MORE INFORMATION, PLEASE CONTACT:

JOEDY GILLILAND
Broker
502.827.4863
joedy@signalonerealty.com



ADVISEMENT SERVICES PROVIDED BY:

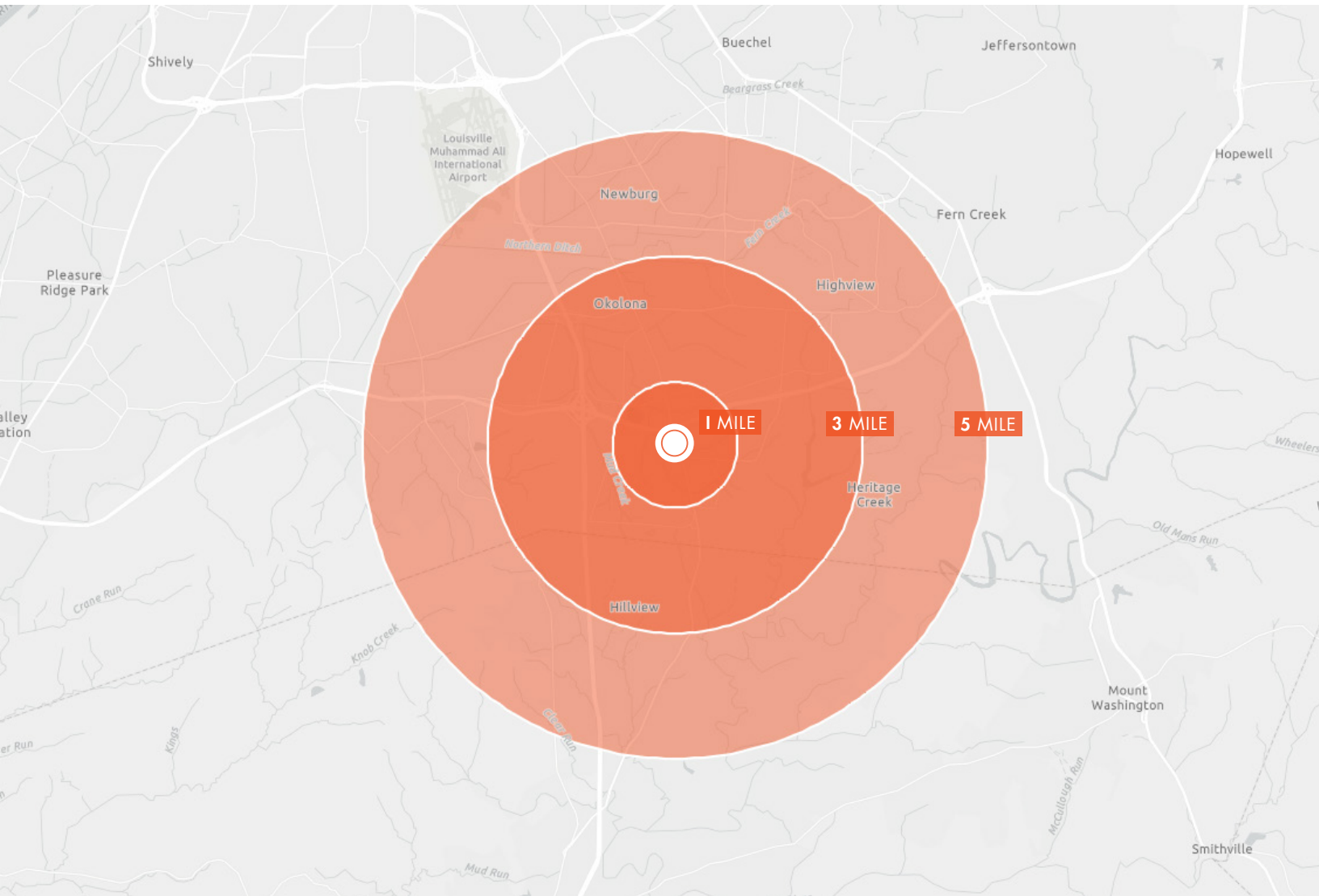
MATT MESSIER, SIOR, CCIM
Partner, Managing Director
407.540.7718
matt.messier@foundrycommercial.com



RELIGIOUS PROPERTY FOR SALE

24,300± SF TOTAL ON 3.43± AC

DEMOGRAPHICS



1 MILE RADIUS



6,994
ESTIMATED POPULATION 2025



37.2
MEDIAN AGE



\$214,970
MEDIAN HOME VALUE 2025



\$101,408
AVG HOUSEHOLD INCOME

3 MILE RADIUS



66,794
ESTIMATED POPULATION 2025



37.1
MEDIAN AGE



\$219,390
MEDIAN HOME VALUE 2025



\$88,834
AVG HOUSEHOLD INCOME

5 MILE RADIUS



137,315
ESTIMATED POPULATION 2025



37.6
MEDIAN AGE



\$225,576
MEDIAN HOME VALUE 2025



\$87,741
AVG HOUSEHOLD INCOME

FOR MORE INFORMATION, PLEASE CONTACT:

JOEDY GILLILAND
Broker
502.827.4863
joedy@signalonerealty.com



ADVISEMENT SERVICES PROVIDED BY:

MATT MESSIER, SIOR, CCIM
Partner, Managing Director
407.540.7718
matt.messier@foundrycommercial.com

