

6421-6443 INKSTER ROAD
BLOOMFIELD HILLS, MICHIGAN

OFFICE/MEDICAL FOR LEASE
535 – 1,439 Square Feet Available



**SIGNATURE
ASSOCIATES**
KNOW SIGNATURE | KNOW RESULTS

KNOLLWOOD OFFICE PARK



PROPERTY FEATURES

- 535 – 1,439 square feet available
- Professionally managed and well-maintained multi-tenant complex
- Move in ready, private entry office suites
- Great Bloomfield Hills location
- Directory and suite entry signage available
- Ample parking
- Lease Rate: See chart



For more information, please contact:

JASON STOUGH
(248) 948 4180
jstough@signatureassociates.com

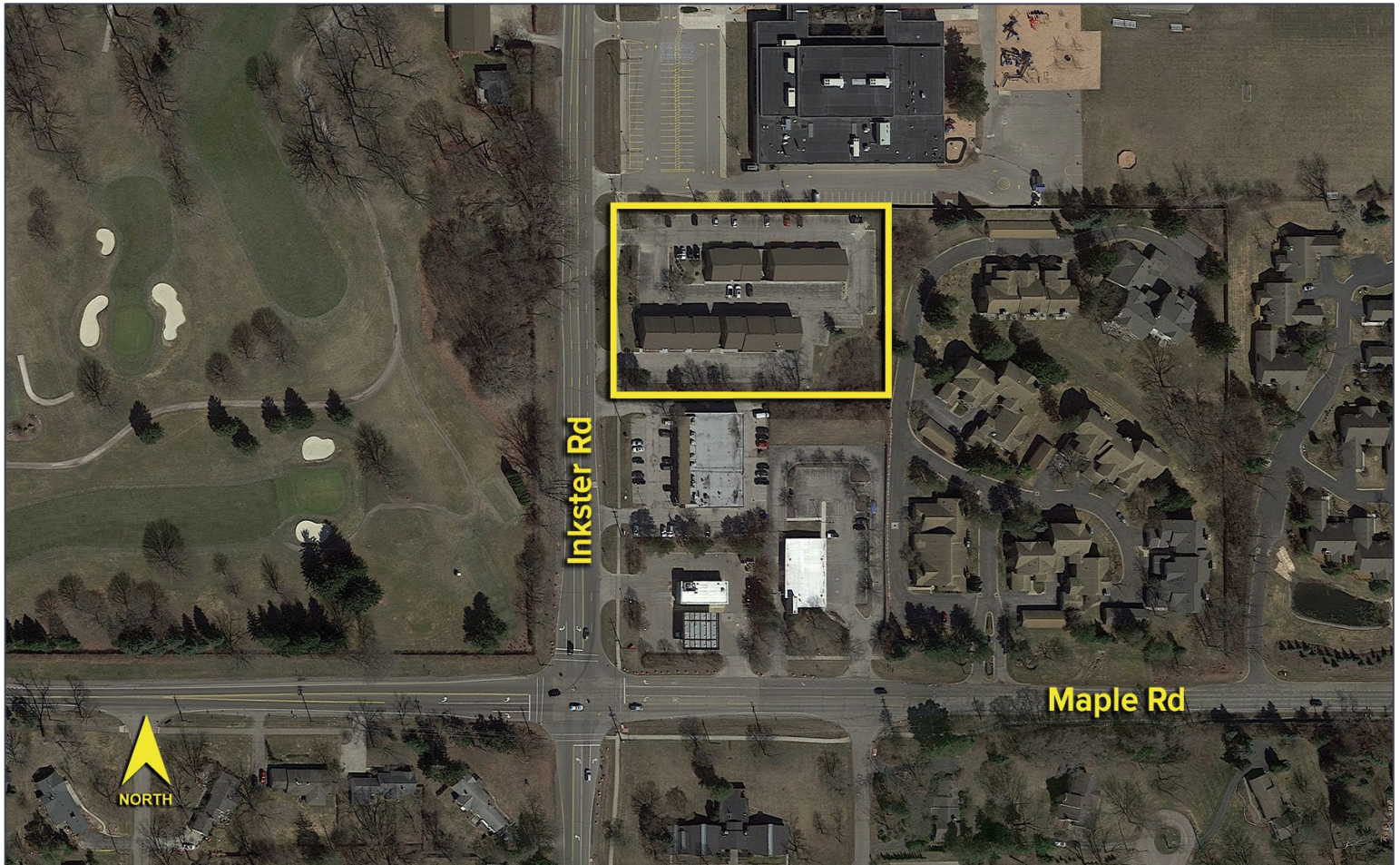
DAN MORROW
(248) 799 3144
dmorrow@signatureassociates.com

SIGNATURE ASSOCIATES
One Towne Square, Suite 1200
Southfield, MI 48076
www.signatureassociates.com

6421-6443 Inkster Road – Bloomfield Hills, Michigan

Office For Lease

535 – 1,439
Square Feet
AVAILABLE



AVAILABILITY

BLDG / SUITES	SIZE (SF)	PRICE PER MONTH
6421 / 100	640	\$975 Gross + U
6421 / 108	535	\$800 Gross + U
6431 / 226	1,117	\$1,675 Gross + U
6443 / 170D	747	\$1,245 Gross
6443 / 290	1,439	\$2,150 Gross

For more information, please contact:

JASON STOUGH
(248) 948 4180
jstough@signatureassociates.com

DAN MORROW
(248) 799 3144
dmorrow@signatureassociates.com

SIGNATURE ASSOCIATES
One Towne Square, Suite 1200
Southfield, MI 48076
www.signatureassociates.com