

FOR SALE OR LEASE



## PROPERTY DETAILS

775 N. 1525 W., Farmington, UT 84025

*For Lease: \$38/SF NNN*  
*For Sale (Full/Partial Floors): \$350/SF*

- Brand-new build
- Immediate access to I-15 and Highway 89
- Purchase or lease opportunity
- Suites ranging from 2,534 SF to 24,902 SF available
- Ample parking
- Medical and/or professional office space
- Ready for improvements



**NEWMARK**

**MOUNTAIN WEST**

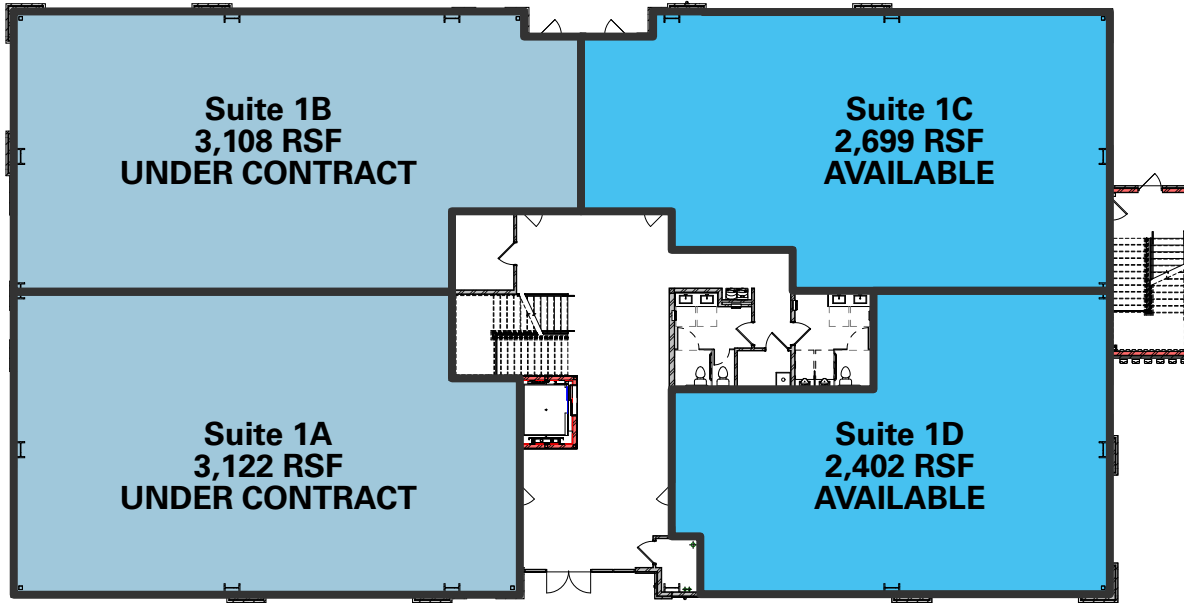
**CHRIS FALK, CCIM, SIOR**  
 cfalk@newmarkmw.com  
 direct 801.499.6514  
[View Profile](#)

**BRAXTON WILLIE, CCIM**  
 bwillie@newmarkmw.com  
 direct 801.803.3334  
[View Profile](#)

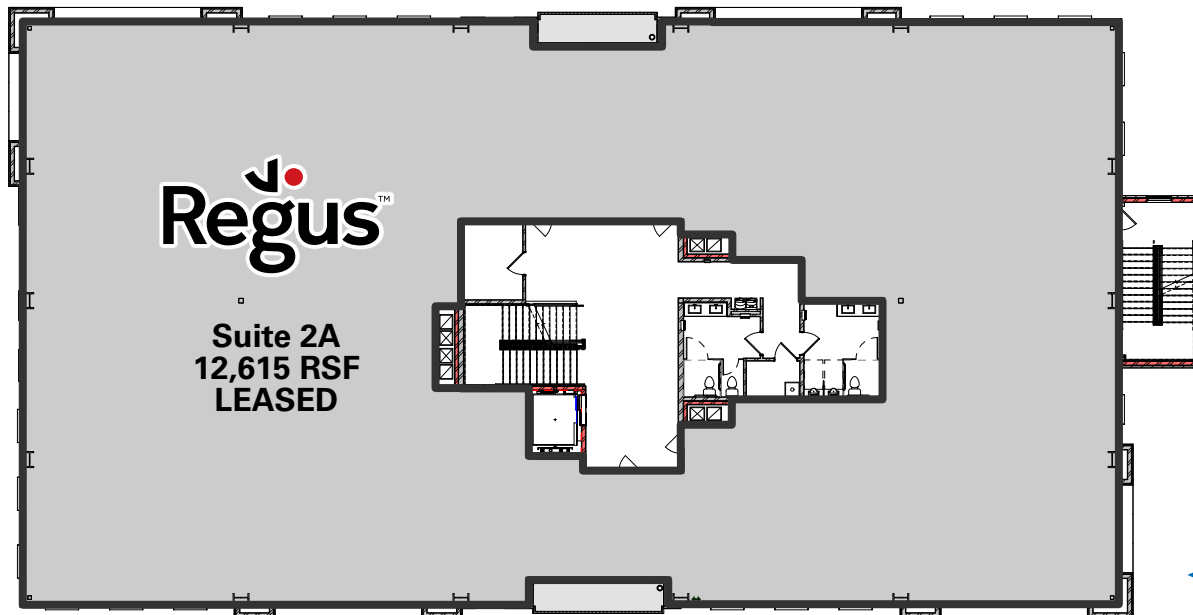
**BRANSON WOOD**  
 bwood@newmarkmw.com  
 direct 801.510.5207  
[View Profile](#)

**FULL SERVICE  
 COMMERCIAL REAL ESTATE**  
 1410 S University Park Blvd, Ste 120  
 Clearfield, Utah 84015  
 Office 801.578.5580  
[www.newmarkmw.com](http://www.newmarkmw.com)

FIRST FLOOR: 2,501 – 12,146 SF AVAILABLE



SECOND FLOOR



**NEWMARK**

**MOUNTAIN WEST**

**CHRIS FALK, CCIM, SIOR**  
 cfalk@newmarkmw.com  
 direct 801.499.6514  
[View Profile](#)

**BRAXTON WILLIE, CCIM**  
 bwillie@newmarkmw.com  
 direct 801.803.3334  
[View Profile](#)

**BRANSON WOOD**  
 bwood@newmarkmw.com  
 direct 801.510.5207  
[View Profile](#)

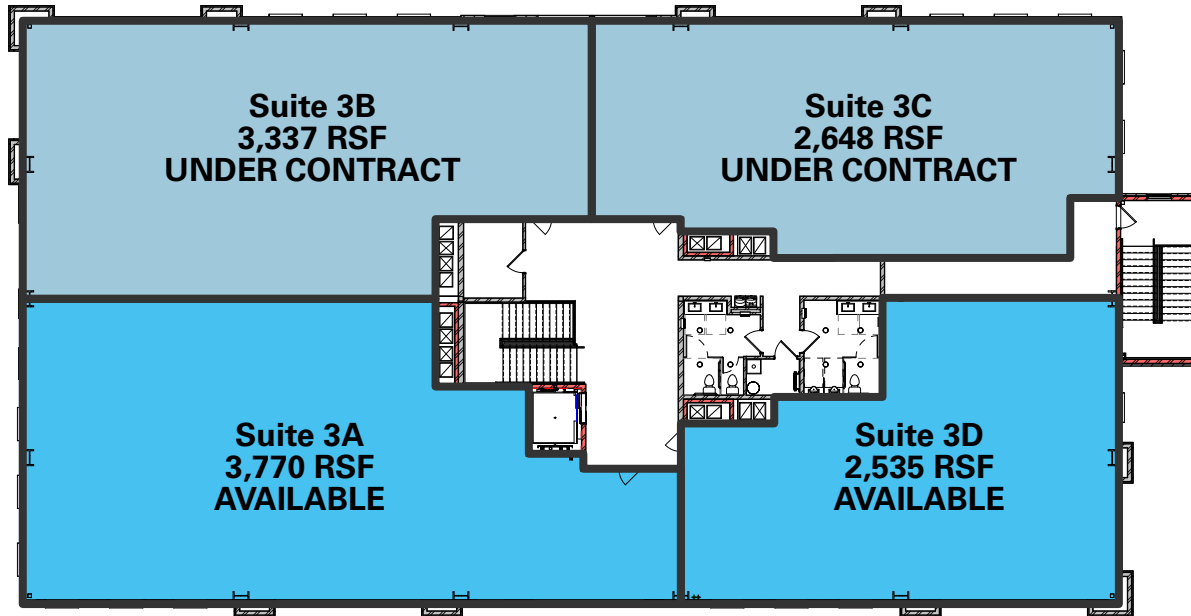
**FULL SERVICE  
 COMMERCIAL REAL ESTATE**  
 1410 S University Park Blvd, Ste 120  
 Clearfield, Utah 84015  
 Office 801.578.5580  
[www.newmarkmw.com](http://www.newmarkmw.com)

**CHRIS FALK, CCIM, SIOR**  
cfalk@newmarkmw.com  
direct 801.499.6514  
[View Profile](#)

**BRAXTON WILLIE, CCIM**  
bwillie@newmarkmw.com  
direct 801.803.3334  
[View Profile](#)

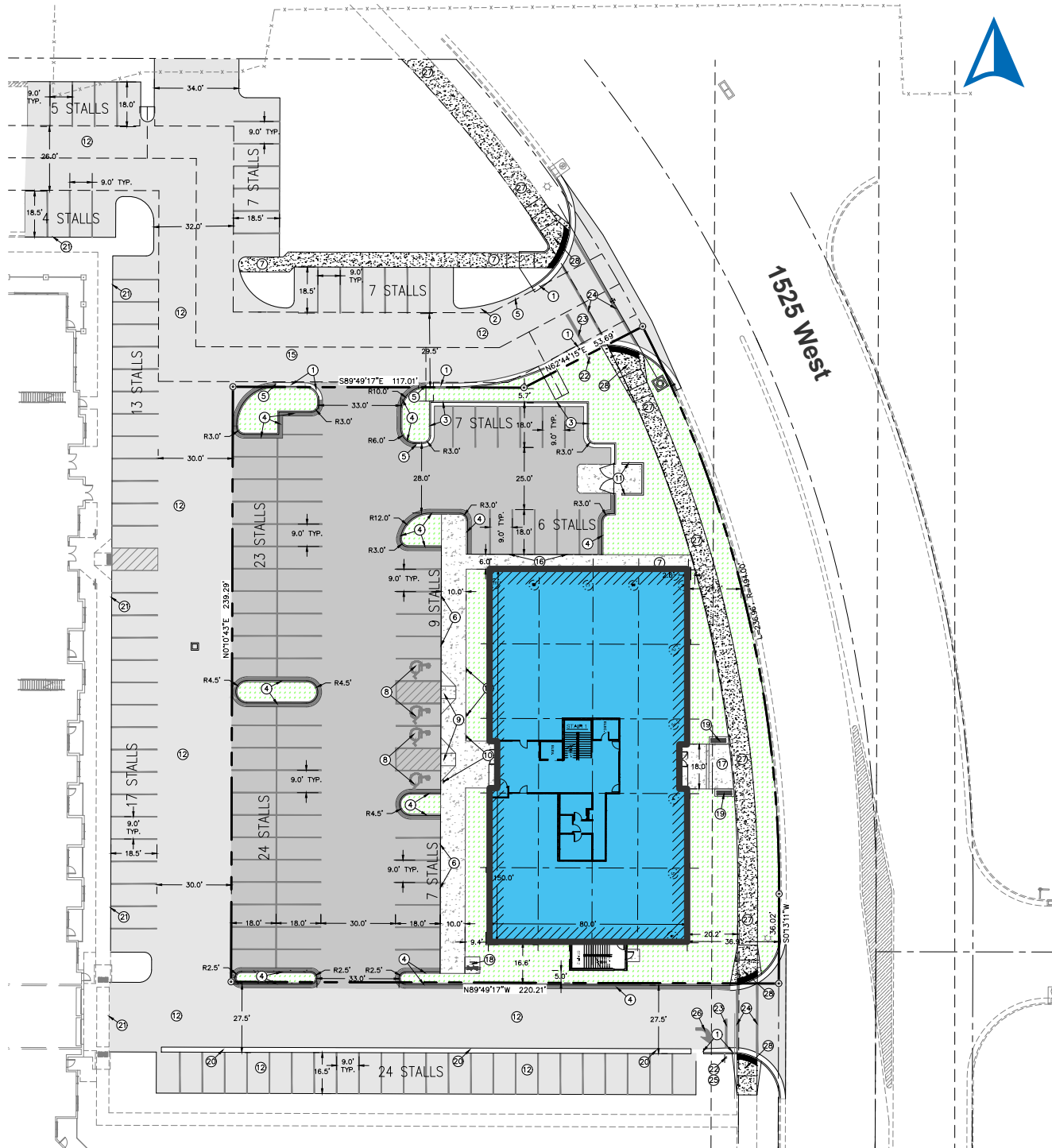
**BRANSON WOOD**  
bwood@newmarkmw.com  
direct 801.510.5207  
[View Profile](#)

**THIRD FLOOR: 2,535 – 12,290 SF AVAILABLE**



**FULL SERVICE  
COMMERCIAL REAL ESTATE**  
1410 S University Park Blvd, Ste 120  
Clearfield, Utah 84015  
Office 801.578.5580  
[www.newmarkmw.com](http://www.newmarkmw.com)

# FARMINGTON INNOVATOR



# NEWMARK

## MOUNTAIN WEST

**CHRIS FALK, CCIM, SIOR**  
 cfalk@newmarkmw.com  
 direct 801.499.6514  
[View Profile](#)

**BRAXTON WILLIE, CCIM**  
 bwillie@newmarkmw.com  
 direct 801.803.3334  
[View Profile](#)

**BRANSON WOOD**  
 bwood@newmarkmw.com  
 direct 801.510.5207  
[View Profile](#)

**FULL SERVICE  
 COMMERCIAL REAL ESTATE**  
 1410 S University Park Blvd, Ste 120  
 Clearfield, Utah 84015  
 Office 801.578.5580  
[www.newmarkmw.com](http://www.newmarkmw.com)

# FARMINGTON INNOVATOR

CURRENTLY UNDER CONSTRUCTION



# NEWMARK

 MOUNTAIN WEST

**CHRIS FALK, CCIM, SIOR**  
cfalk@newmarkmw.com  
direct 801.499.6514  
[View Profile](#)

**BRAXTON WILLIE, CCIM**  
bwillie@newmarkmw.com  
direct 801.803.3334  
[View Profile](#)

**BRANSON WOOD**  
bwood@newmarkmw.com  
direct 801.510.5207  
[View Profile](#)

**FULL SERVICE  
COMMERCIAL REAL ESTATE**  
1410 S University Park Blvd, Ste 120  
Clearfield, Utah 84015  
Office 801.578.5580  
[www.newmarkmw.com](http://www.newmarkmw.com)



**CHRIS FALK, CCIM, SIOR**  
 cfalk@newmarkmw.com  
 direct 801.499.6514  
[View Profile](#)

**BRAXTON WILLIE, CCIM**  
 bwillie@newmarkmw.com  
 direct 801.803.3334  
[View Profile](#)

**BRANSON WOOD**  
 bwood@newmarkmw.com  
 direct 801.510.5207  
[View Profile](#)

**FULL SERVICE  
 COMMERCIAL REAL ESTATE**  
 1410 S University Park Blvd, Ste 120  
 Clearfield, Utah 84015  
 Office 801.578.5580  
[www.newmarkmw.com](http://www.newmarkmw.com)