



# Portland Plaza

5700 N Portland Ave,  
OKLAHOMA CTY, OK 73132



Eric Williams  
ewilliams@mcgeecre.com  
(405) 819-1638  
McGee Real Estate Services  
4324 Grant Blvd  
Yukon, OK 73099

# At-a-Glance

- Address: 5700 N Portland Ave.  
Oklahoma City, OK 73132
- Bldg Size: 37,914 SF
- Availability: 540/RSF to 2,365/RSF
- Rate: Starting at \$17.00/SF
- Type: Full Service with Expense Stop
- Parking: 1.94 AC Lot | 126 p.s. 2002
- Zone: C-CBD
- Submarket: North Oklahoma City





# Tenant Information

- Oklahoma City Indian Clinic
- United Systems
- Integris Baptist Medical Center
- Roy Bankhead, MD
- Lisa Farhood, MD
- Byram Healthcare
- Blue Mountain Health
- Skin Care by Michelle

# Availability

## **1st Floor Ste 103**

- Space Available: 559 USF / 679 RSF
- Rental Rate: \$18.00 / SF
- Date Available: Now
- Service Type: Full Service with expense stop
- Build-out As: Medical / Office
- Lease Term: Negotiable
- Description: LL to refresh with Paint & Carpet

# Availability

## **1st Floor Ste 105**

- Space Available: 1,343 USF / 1,696 RSF
- Rental Rate: \$17.50 / SF
- Date Available: October 1, 2025
- Service Type: Full Service with expense stop
- Build-out As: Office
- Lease Term: Negotiable
- Description: Previously occupied by an accounting firm, spaces includes waiting, 8 offices and rear exit. LL to refresh with Paint & Carpet.

## **3rd Floor Ste 300**

- Space Available: 1,022 USF / 1,255 RSF
- Rental Rate: \$17.00 / SF
- Date Available: Now
- Service Type: Full Service with expense stop
- Build-out As: CPA Office/Professional
- Lease Term: Negotiable
- Description: Previously occupied by an accounting firm, space includes waiting room, coffee bar with sink and 4 offices. LL to refresh with Paint & Carpet

# Availability

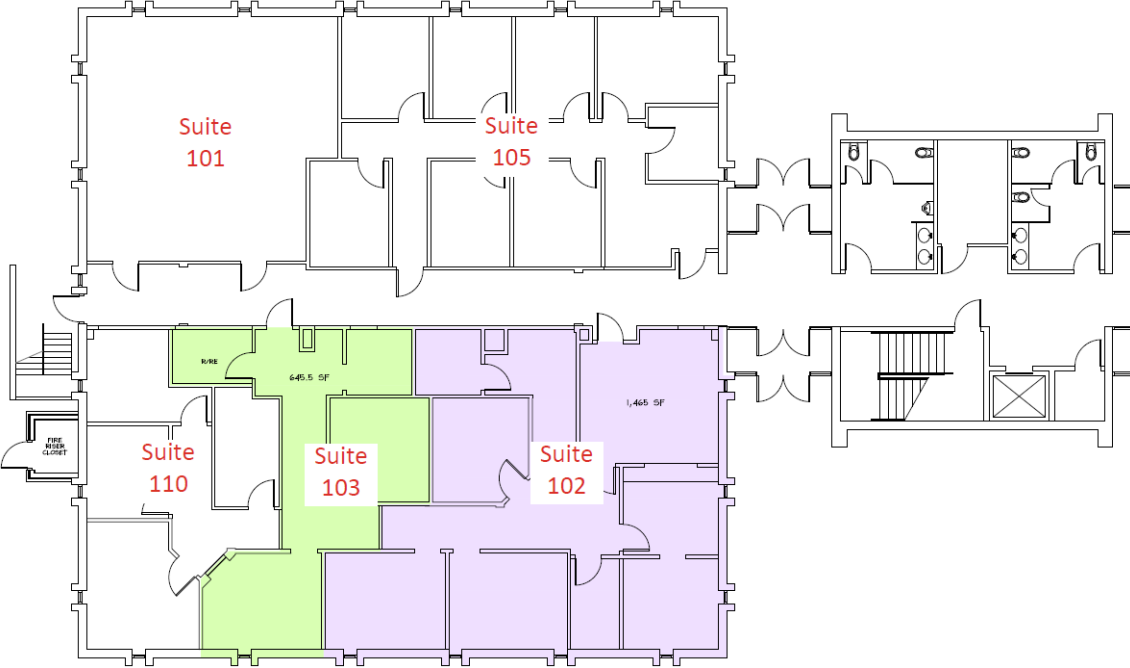
## **3rd Floor Ste 303**

- Space Available: 440 USF / 540 RSF
- Rental Rate: \$18.00 / SF
- Date Available: Now
- Service Type: Full Service with expense stop
- Build-out As: Professional
- Lease Term: Negotiable
- Description: Waiting Area/Office; copier room; Executive Office

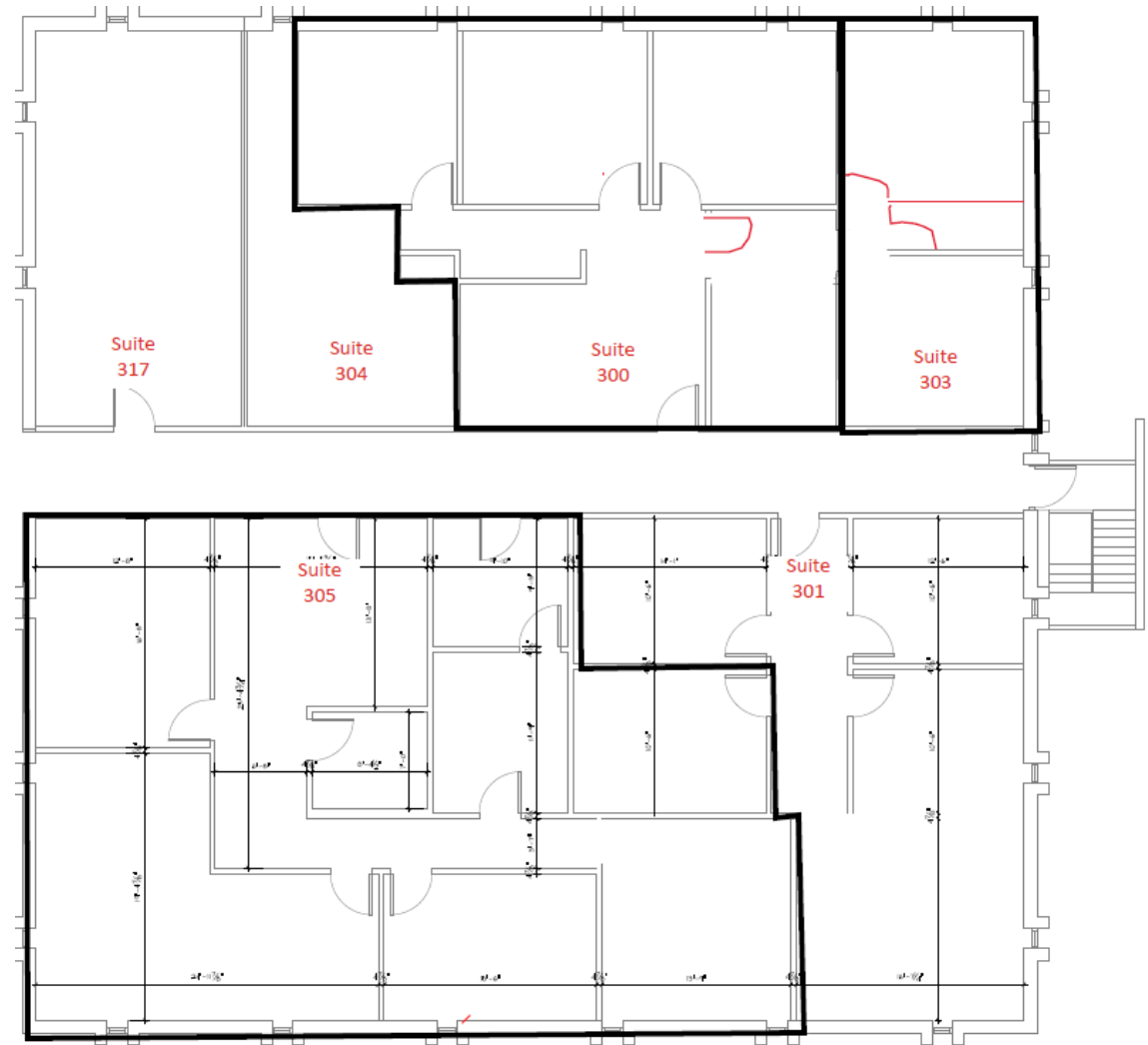
## **3rd Floor Ste 305**

- Space Available: 1,927 USF / 2,365 RSF
- Rental Rate: \$17.00 / SF
- Date Available: Now
- Service Type: Full Service with expense stop
- Build-out As: Medical/Professional
- Lease Term: Negotiable
- Description: Previously occupied by a therapy clinic, the suite offers a waiting room, reception area, private restroom, breakroom and 6 offices

# 1<sup>st</sup> flr Floor Plan



# 3<sup>rd</sup> flr Floor Plan







# Site Plan



# Vicinity Map

