

Industrial |

FOR SALE

| All or Part

1221-1225 E ASH AVE

Fullerton, California 92831



Features

±8,860 SF single occupier building, or use as it is currently divided into three units with yard area(s):

1221 E Ash Ave 2,640 sf

1223 E Ash Ave 2,640 sf

1225 E Ash Ave 3,580 sf

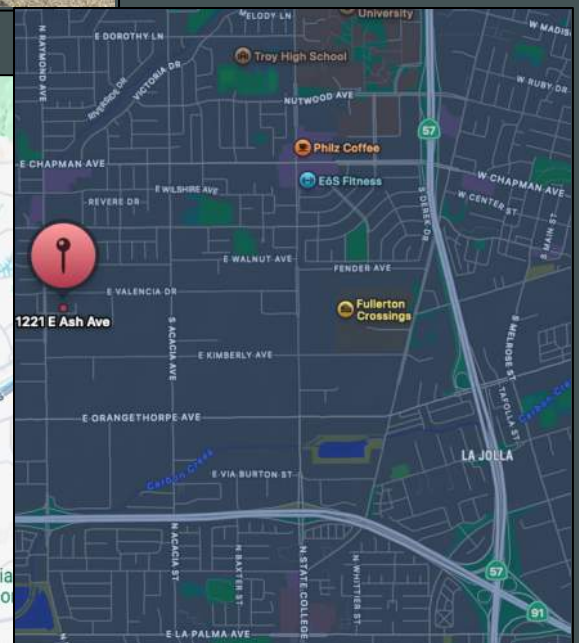
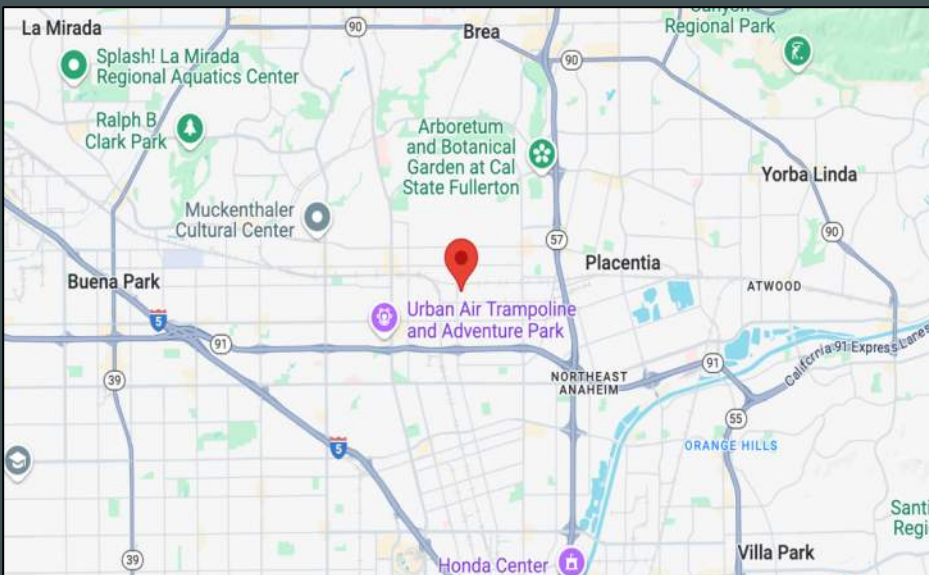
Min Office Space per unit

+ Five (5) Ground Level Doors +

13' Min Warehouse Clearance +

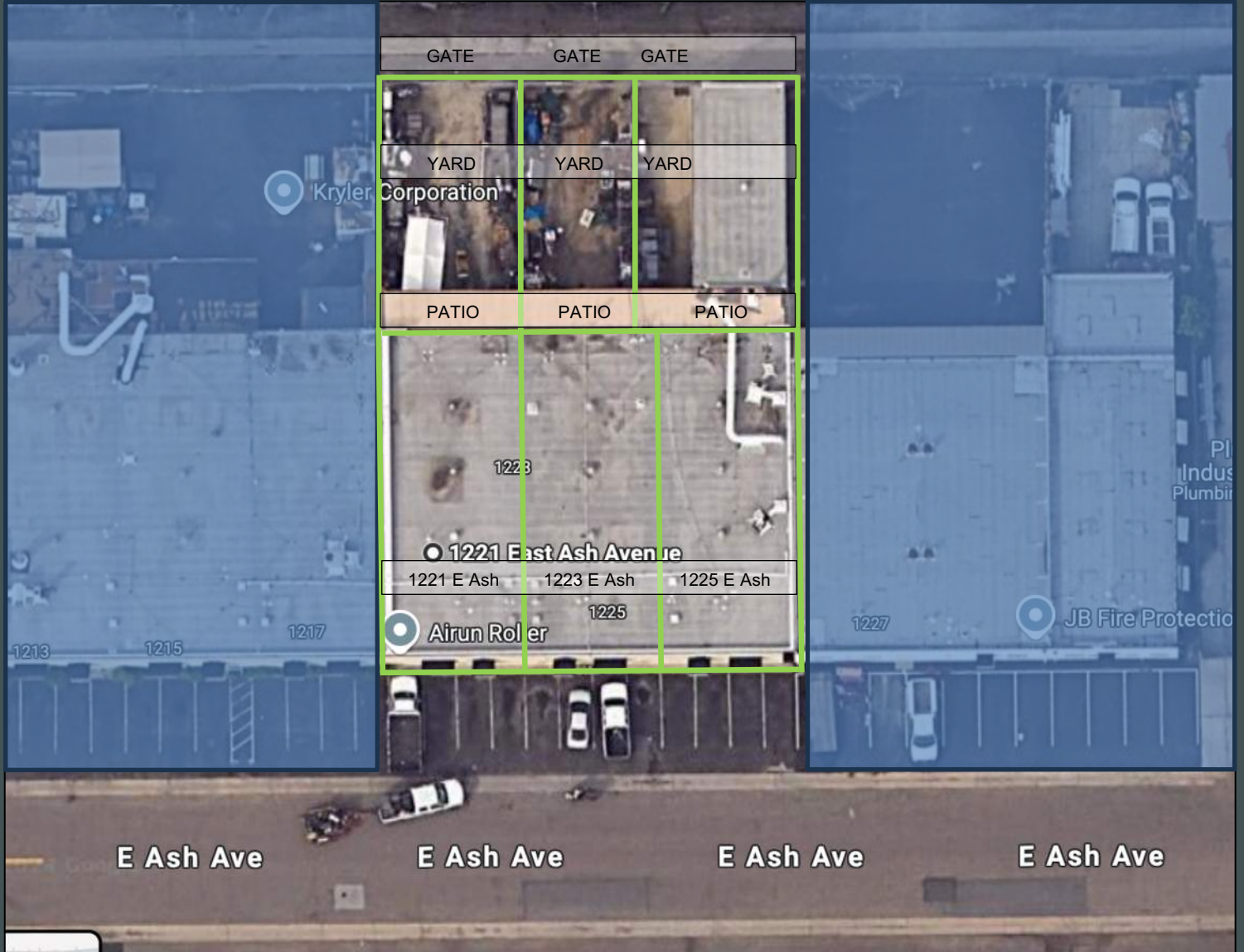
Large Fenced Yard

+ Easy Access to the 57 & 91



1221-1225 E ASH AVE
Fullerton, CA 92831

FOR
SALE



MP Zoning allows proximity industrial uses while protecting public health, safety and welfare through dev standards and site plan review(s). It's intended for light ind activities minimizing impacts on nearby residential use. **Permitted uses:**

- + Outdoor storage (screened)
- + Mfg, WHSE, Storage
- + Automobile / truck storage
- + Towing
- + Bldg Const-General/Hvy Contractors
- + Wholesale trade
- + Automobile / truck rental
- + Self-Service Storage

Contact:

Steve Eberle, MBA,
CCIM, LEED AP
O+M
President
+1 949 350 3231 (m)
seberle@EberleCompany.com
CA DRE Lic. 00886508



This information has been obtained from sources believed reliable but has not been verified for accuracy or completeness. You should conduct a careful, independent investigation of the property and verify all information. Any reliance on this information is solely at your own risk. Photos herein are the property of their respective owners. Use of these images without the express written consent of the owner is prohibited.