



# RETAIL OR OFFICE SPACE FOR LEASE

## GREENBROOK PLAZA | 1090-1250 LAKE STREET, HANOVER PARK, IL



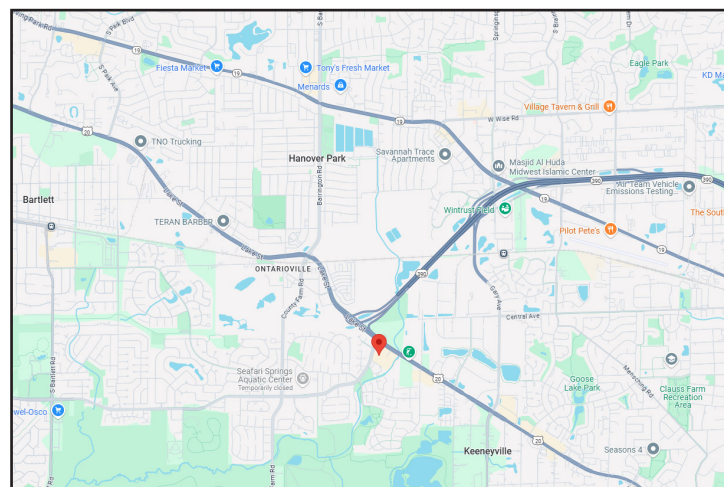
### BUILDING FEATURES:

- 975 SF - 2,265 SF Available For Lease
- High End Grocery Anchored Retail Center (Caputo's Fresh Market) Recently Remodeled
- Heavy Traffic Counts: 35,000 Vehicles per day
- Over 287,000 consumers in a 5 mile radius
- Average Household Income Exceeds \$108,000 per year within a 5 Mile Radius

### AVAILABLE SPACE:

Suite	Size (SF)	Rate	Previous Tenant
1236	975-2,265 SF	\$20.00 Net	General Retail
1090-1094	2,500-7,500 SF	\$8.00 Net	General Retail
1166	9,688 SF	\$8.00 Net	Former Beauty School
1178	1,800 SF	\$12.00 Net	General Retail

- **Rental Rates: \$12.00-\$28.00 Net PSF**
- **Taxes & Operating Expenses \$5.00 PSF**
- **Join The Following Tenants: Denny's, Recently Renovated Caputo's Fresh Market, Timeout West Sports Pub, Hanover Park Dental & More!!**



### FOR MORE INFORMATION:

RANDY OLCZYK  
Direct: 847.246.9611  
randy@chicagolandcommercial.com

RAY OKIGAWA  
Direct: 847.246.9632  
Ray@chicagolandcommercial.com

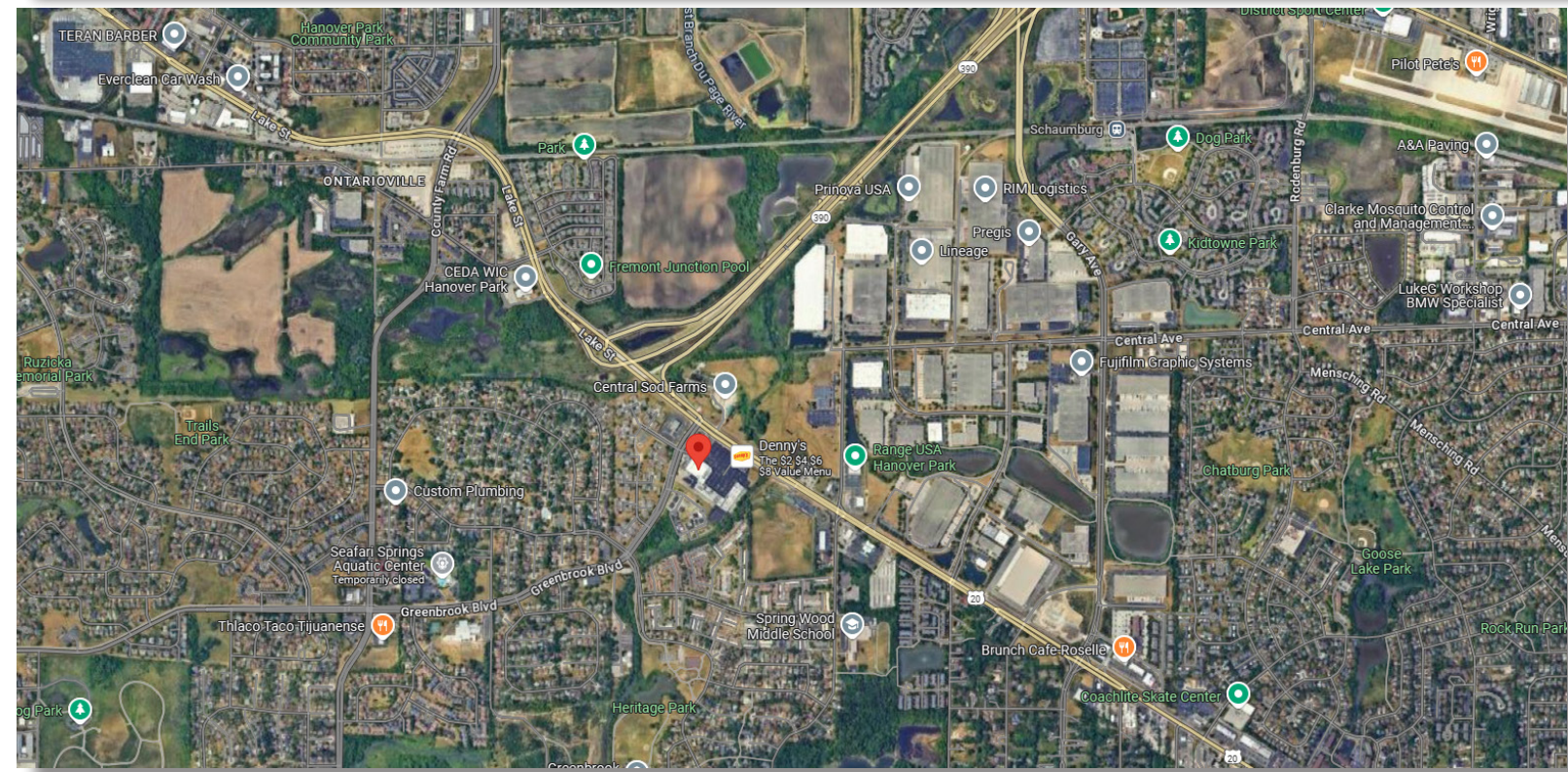
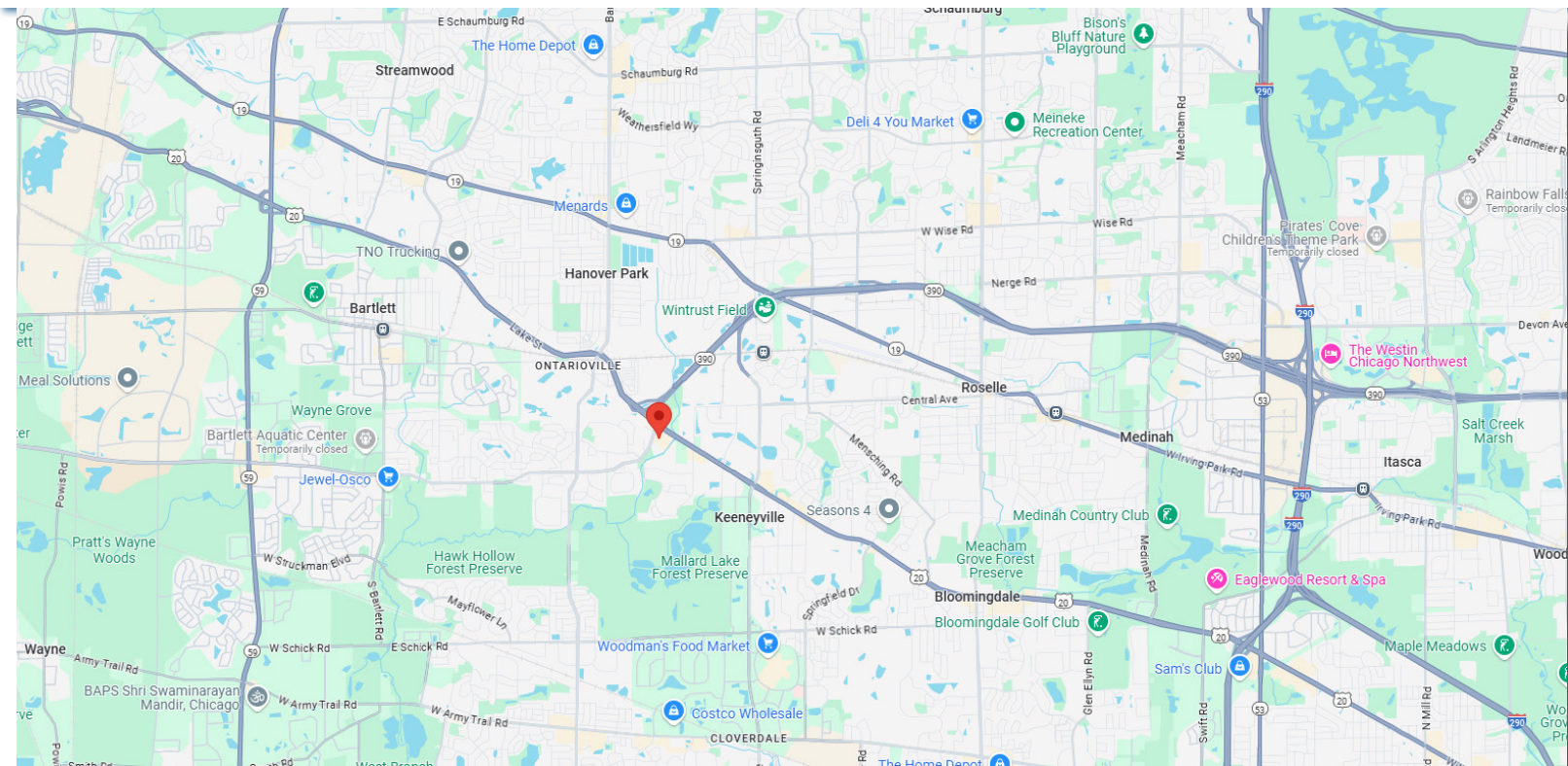


4811 Emerson Suite 112 Palatine, IL 60067



# RETAIL SPACE FOR LEASE

## GREENBROOK PLAZA | 1090-1250 LAKE STREET, HANOVER PARK, IL



### FOR MORE INFORMATION:

**RANDY OLCZYK**  
Direct: 847.246.9611  
randy@chicagolandcommercial.com

**RAY OKIGAWA**  
Direct: 847.246.9632  
Ray@chicagolandcommercial.com



4811 Emerson Suite 112 Palatine, IL 60067

LEASING | SALES | TENANT ADVISORY | MANAGEMENT

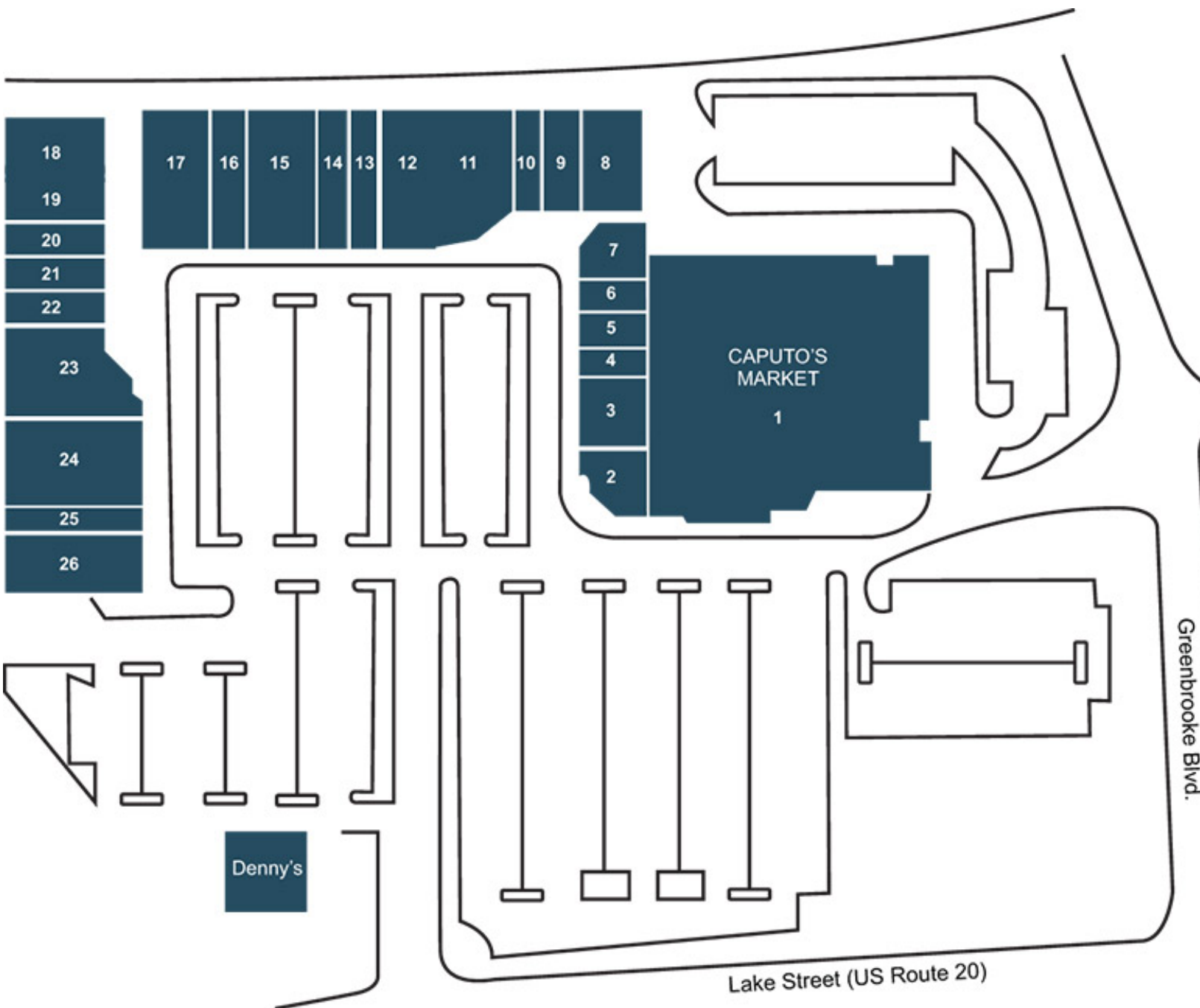
[www.chicagolandcommercial.com](http://www.chicagolandcommercial.com)



# RETAIL SPACE FOR LEASE

GREENBROOK PLAZA | 1090-1250 LAKE STREET, HANOVER PARK, IL

## SITE PLAN



### FOR MORE INFORMATION:

RANDY OLCZYK  
Direct: 847.246.9611  
randy@chicagolandcommercial.com

RAY OKIGAWA  
Direct: 847.246.9632  
Ray@chicagolandcommercial.com



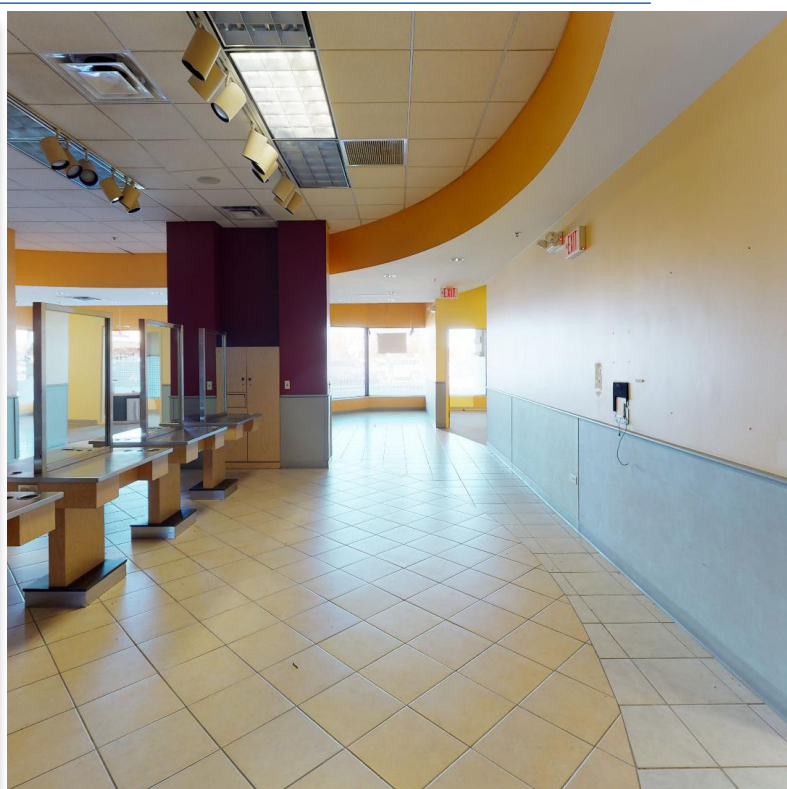
4811 Emerson Suite 112 Palatine, IL 60067



# RETAIL SPACE FOR LEASE

GREENBROOK PLAZA | 1090-1250 LAKE STREET, HANOVER PARK, IL

## BUILDING FEATURES:



## FOR MORE INFORMATION:

RANDY OLCZYK  
Direct: 847.246.9611  
randy@chicagolandcommercial.com

RAY OKIGAWA  
Direct: 847.246.9632  
Ray@chicagolandcommercial.com



4811 Emerson Suite 112 Palatine, IL 60067

[www.chicagolandcommercial.com](http://www.chicagolandcommercial.com)

LEASING | SALES | TENANT ADVISORY | MANAGEMENT