



Ray Street & North Park Way

CREATIVE OFFICE /
RETAIL / CAFÉ
FOR LEASE

NORTH PARK
SAN DIEGO, CA



RAY STREET & NORTH PARK WAY

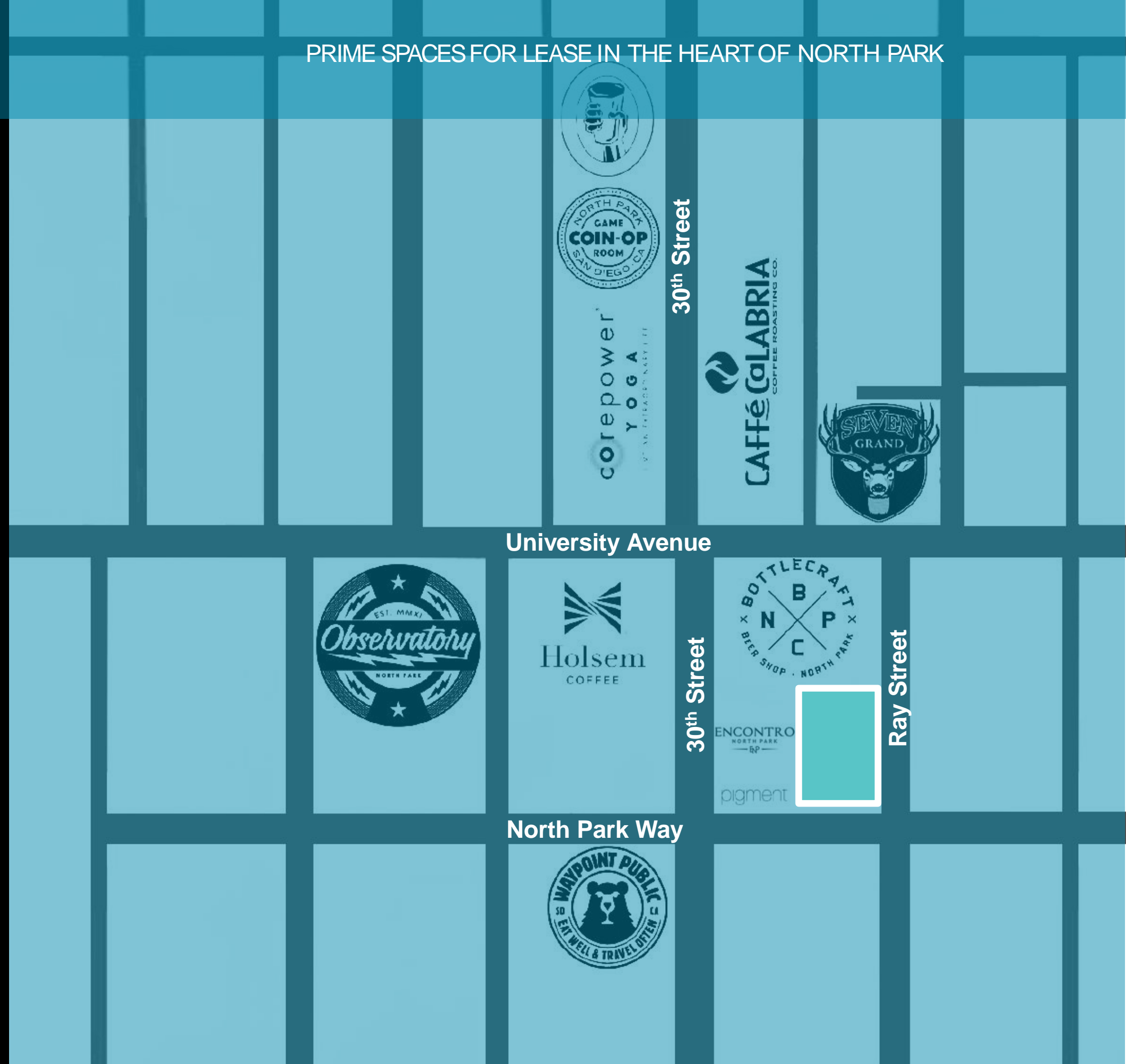
PRIME SPACES FOR LEASE IN THE HEART OF NORTH PARK

3020-24 North Park Way /
3800-3826 Ray St.
San Diego, CA 92104

Located in the heart of North Park this 12,365 SF retail/office project features excellent exposure from North Park Way & Ray St, flexible floorplans and easy access from the surrounding neighborhoods and businesses. Suites offer Tenants the ability to take advantage of the unique character of the building with signage and creative build out opportunities.

We obtained the information above from sources we believe to be reliable. However, we have not verified its accuracy and make no guarantee, warranty or representation about it. It is submitted subject to the possibility of errors, omissions, change of price, rental or other conditions, priorsale, lease or financing, or withdrawal without notice. We include projections, opinions, assumptions or estimates for example only, and they may not represent current or future performance of the property. You and your tax and legal advisors should conduct your own investigation of the property and transaction.

overview



“(North Park is) Pulsing with
Eclectic-ricity”

New York Times

“**#13 Best Hipster**
Neighborhood in the Nation”

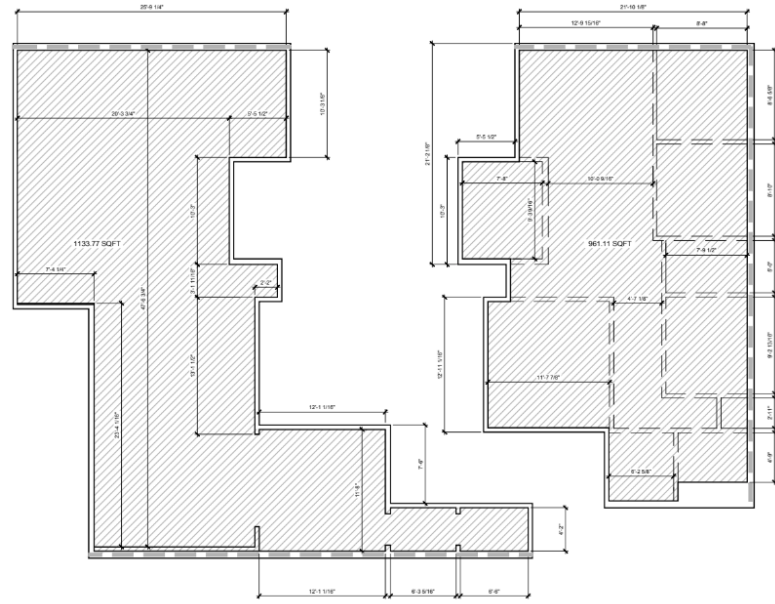
Forbes

“**The area is overflowing**
with a thriving beer scene,
cool eateries, and seriously
hip boutiques”

San Diego Magazine

area





3020 & 3022 North Park Way

- Up to 2,298 SF
- Available NOW
- Open Floor Plan
- Ideal for retail or creative office
- 16' exposed ceilings
- Asking rate - negotiable

site



location

RAY STREET & NORTH PARK WAY



contact

Nate Benedetto
nate@nextwavecommercial.com
CA Lic. #01436440
nextwavecommercial.com

Cam Lacey
cam@nextwavecommercial.com
CA Lic. #01955796

Next Wave Commercial
1167 Morena Blvd.
San Diego, CA 92110
CA Lic. #02010077

619.326.4400

