

2175 K STREET, NW

Washington, DC 20037

Office For Lease

3,059 - 12,259 SF



Leasing Information:
202.513.6700

Lincoln

Merrill Turnbull	Adam Biberaj	Tim Whitebread
202.513.6713	202.513.6736	202.513.6712
mturnbull@lpc.com	abiberaj@lpc.com	twhitebread@lpc.com

Lincoln Property Company
101 Constitution Avenue, NW Suite 325 East
Washington, DC 20001

www.lpc.com

2175 K STREET, NW

Washington, DC 20037

Office For Lease

3,059 - 12,259 SF



Property Highlights

- Prominent CBD location with K Street frontage
- Spectacular window lines
- Free-standing Class-A building
- On-site parking
- Tenant-only fitness center
- Two-blocks from Foggy Bottom Metro station

Availabilities

SF

Lease Rate

Date Available

Suite 250	3,944 SF	Negotiable	Immediately
Suite 300	3,059 SF	Negotiable	Immediately
Suite 310	3,122 SF	Negotiable	Immediately
Suite 400	12,259 SF	Negotiable	Immediately
Suite 500	8,000 - 12,259 SF	Negotiable	Immediately



Merrill Turnbull

202.513.6713
mturnbull@lpc.com

Adam Biberaj

202.513.6736
abiberaj@lpc.com

Tim Whitebread

202.513.6712
twhitebread@lpc.com

Lincoln

2175 K STREET, NW
Washington, DC 20037

3rd Floor
3,059 SF



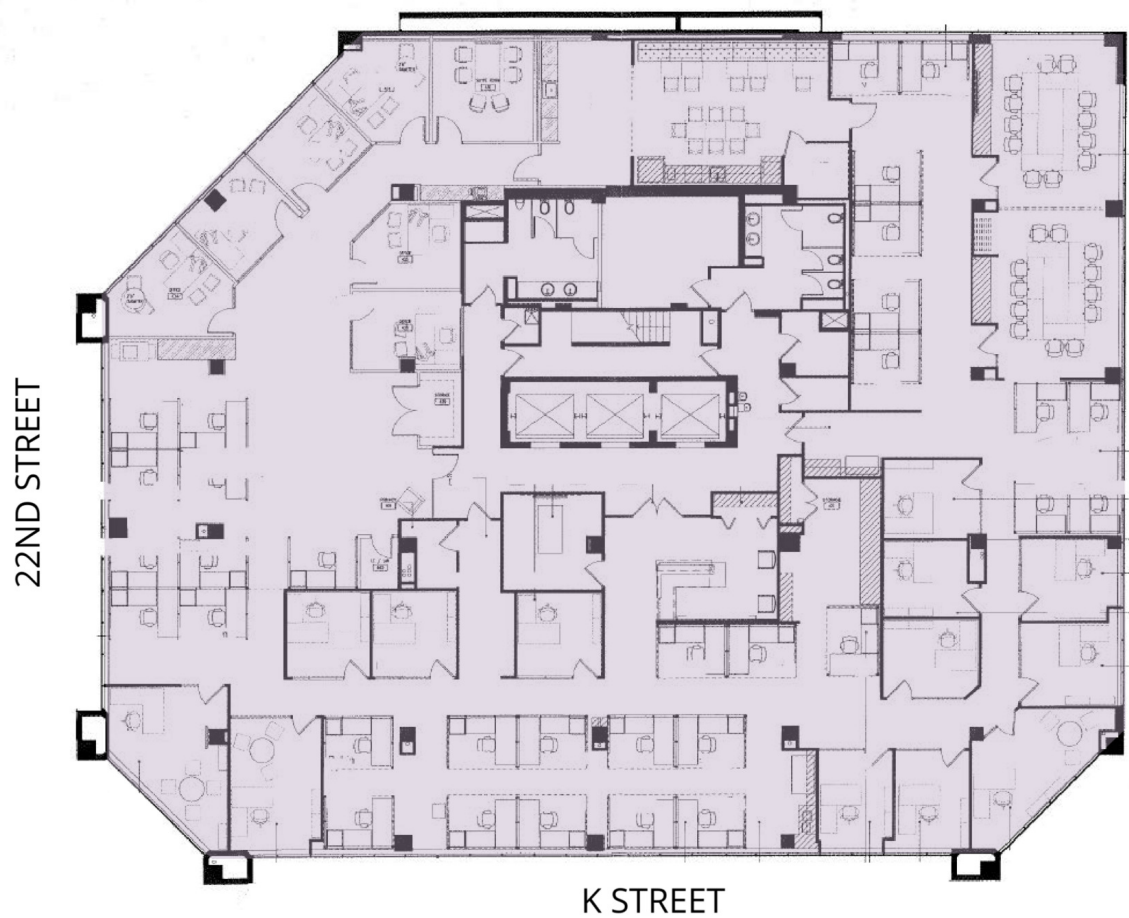
Suite	Size	Description
■ Suite 300	3,059 SF	Elevator exposure, K Street frontage. 5 windowed offices and conference room. Available Immediately.
■ Suite 310	3,122 SF	5 windowed offices and conference room. Available immediately.

Merrill Turnbull Adam Biberaj Tim Whitebread
202.513.6713 202.513.6736 202.513.6712
mturnbull@lpc.com abiberaj@lpc.com twhitebread@lpc.com

Lincoln

2175 K STREET, NW
Washington, DC 20037

4th Floor
12,259 SF



Suite	Size	Description
■ Suite 400	12,259 SF	Full floor available. Great window line. 17 private offices with conference room, break room with pantry, and kitchenette.

Merrill Turnbull 202.513.6713 mturnbull@lpc.com	Adam Biberaj 202.513.6736 abiberaj@lpc.com	Tim Whitebread 202.513.6712 twhitebread@lpc.com
--	---	--

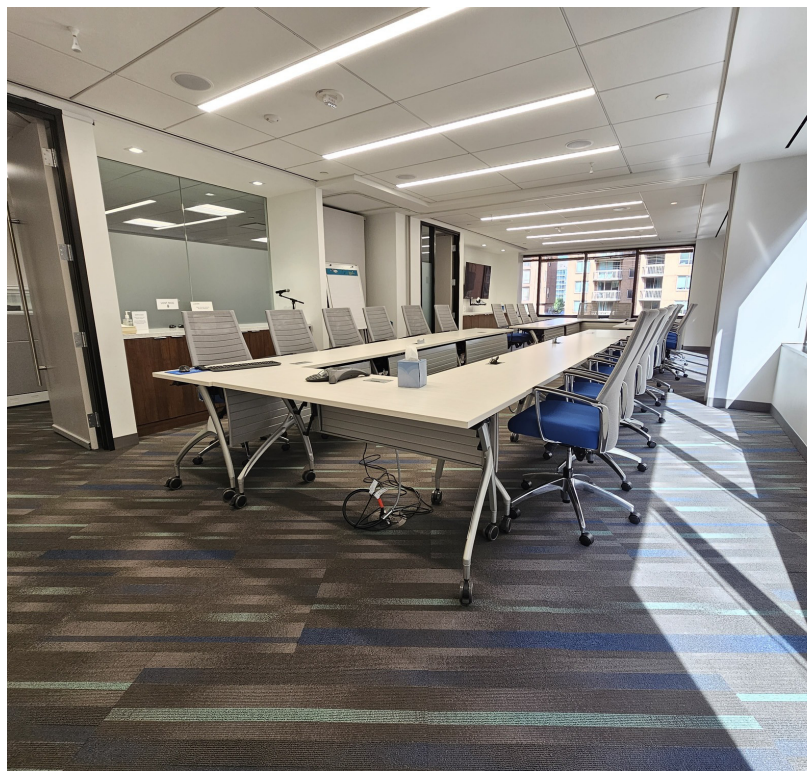
Lincoln

2175 K STREET, NW

Washington, DC 20037

4th Floor Photos

3,059 - 12,259 SF



Merrill Turnbull

202.513.6713
mturnbull@lpc.com

Adam Biberaj

202.513.6736
abiberaj@lpc.com

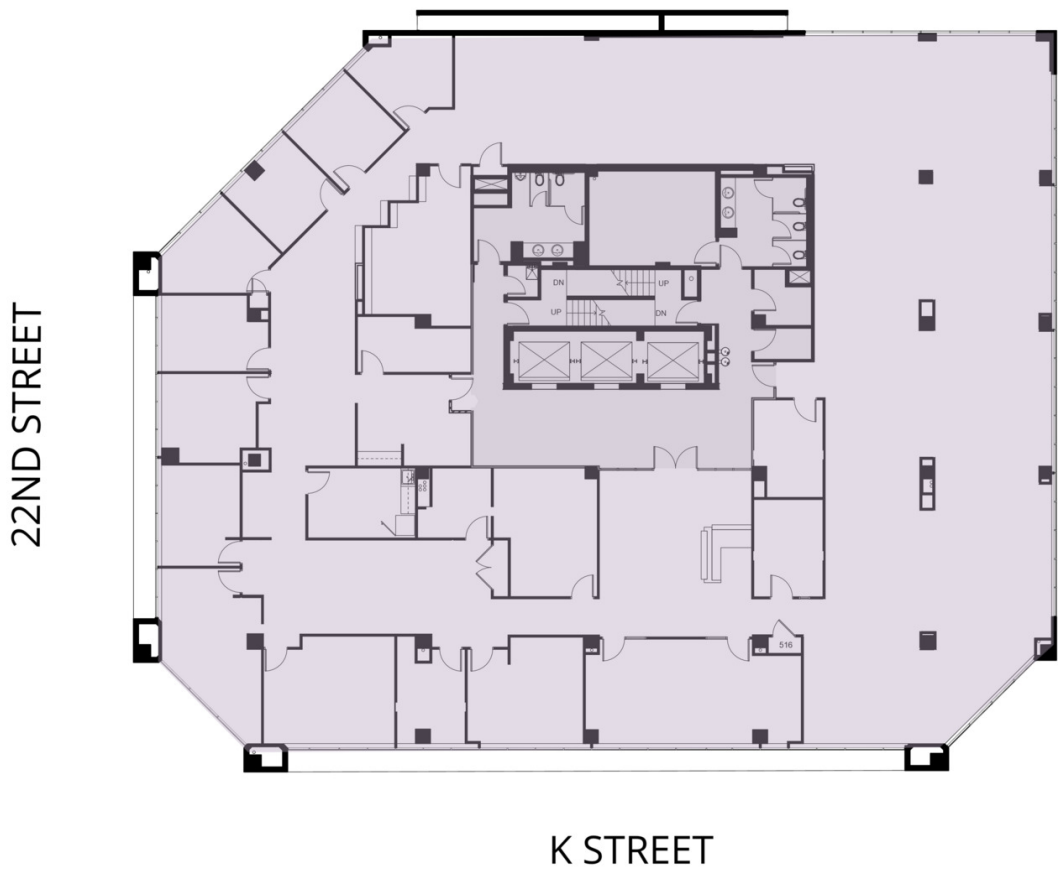
Tim Whitebread

202.513.6712
twhitebread@lpc.com

Lincoln

2175 K STREET, NW
Washington, DC 20037

5th Floor
8,000 - 12,259 SF



Suite	Size	Description
■ Suite 500	8,000 - 12,259 SF	Full floor available with four sides of glass. Great window line on K Street.

Merrill Turnbull Adam Biberaj Tim Whitebread
202.513.6713 202.513.6736 202.513.6712
mturnbull@lpc.com abiberaj@lpc.com twhitebread@lpc.com

Lincoln



2175 K STREET, NW

Washington, DC 20037

Leasing Information:
202.513.6700

Merrill Turnbull
202.513.6713
mturnbull@lpc.com

Adam Biberaj
202.513.6736
abiberaj@lpc.com

Tim Whitebread
202.513.6712
twhitebread@lpc.com

Lincoln

Lincoln Property Company
101 Constitution Avenue, NW Suite 325 East
Washington, DC 20001

www.lpc.com