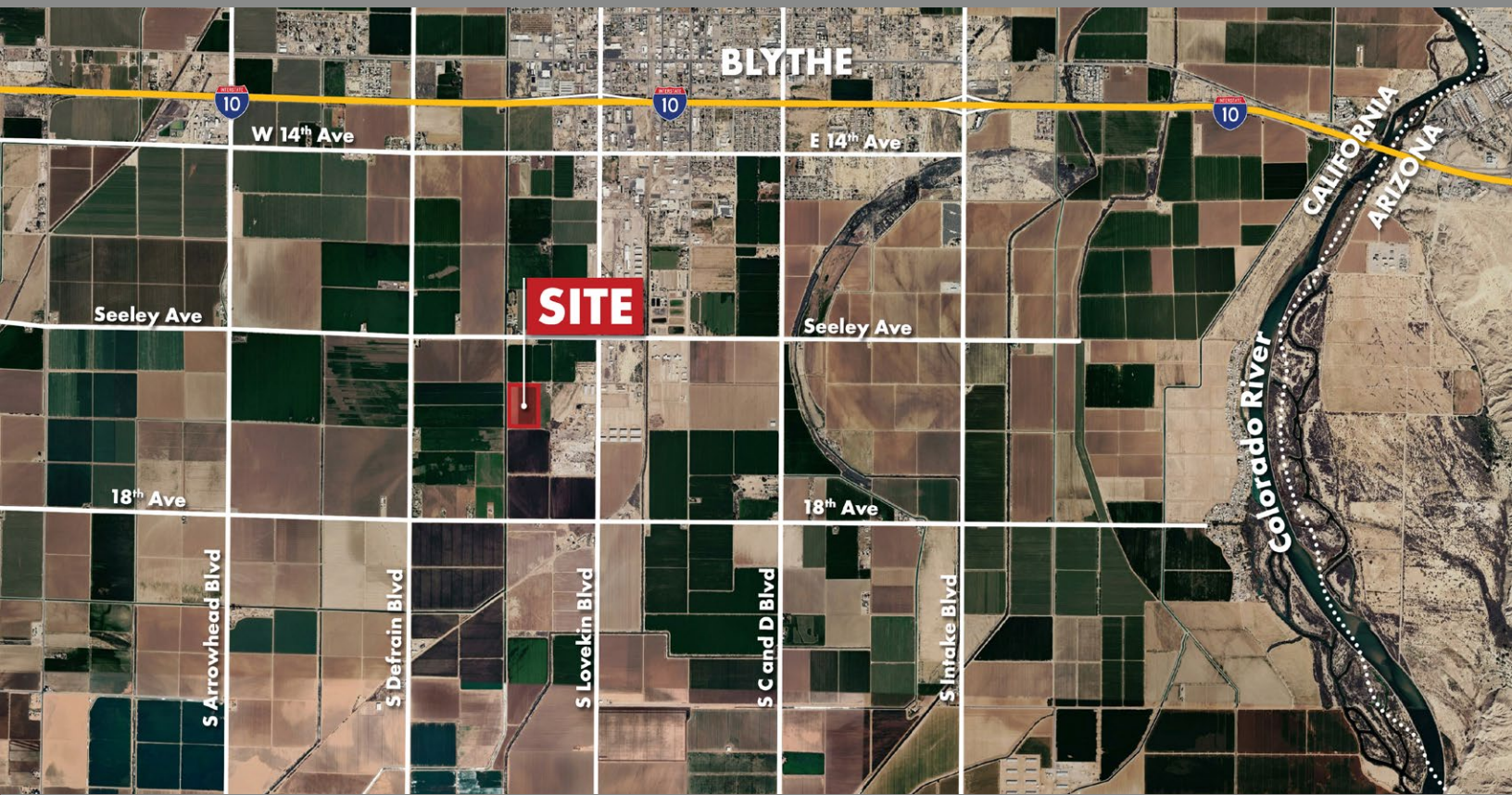


30 ACRES FARMGROUND

BLYTHE, CA - RIVERSIDE COUNTY



S SEELEY AVE & W LOVEKIN BLVD, BLYTHE, CA

FEATURES

- 30 acres of prime agricultural land in Blythe, CA—three contiguous 10-acre parcels to be sold together
- Build your custom home or invest in versatile farmland, just 10 minutes from the Colorado River
- Enjoy wide-open spaces, fertile soil, and the tranquility of country living in a sought-after location
- Easy access to I-10 Freeway
- Currently leased through December 2026

PRICE: \$495,000 (\$16,500/AC)

PALO VERDE VALLEY



VICINITY MAP



3/25/26 JC



MARK MCMANIS

DRE #02094911

markm@dppllc.com

Cell: 209.681.6392

DesertPacificProperties.com 760.360.8200

30 ACRES FARMGROUND

AERIAL & SITE AMENITIES



Directions: From Palm Springs, travel east on I-10 Fwy towards Blythe, CA for about 108 miles. Take exit on Hwy 78/S Neighbours Blvd for about 1.2 miles. Turn left onto 16th Ave/Seeley Ave and continue straight for 2.5 miles. Take a right next to the Canal (dirt road). In 82 ft the property will be on your left. (Adjacent address: 16255 S Lovekin Blvd, Blythe, CA 92225)

SITE AMENITIES

- **Location:** Property is located at the south side of Seeley Ave and west side of Lovekin Blvd, Blythe, CA
- **APN:** 869-260-019 (10 AC), 020 (10 AC), 021 (10 AC)
- **Parcel Size (According to County Assessor's Information):** 30 Acres
- **Zoning:** [Click here to view A-2-10 \(Heavy Ag, 10-acre min. lot size\)](#)
- **General Plan:** [Agriculture](#)
- **Utilities:**
Irrigation Water: Palo Verde Irrigation District, Gate C-50E
Electrical: Southern California Edison (SCE) - Buyer to verify
Sewer: No sewer in the area
- **Lease:** Currently leased, expires 12/31/26
- **Terms:** Cash
- **Comments:** Just outside the city limits of Blythe. Easy access to I-10 and Hwy 78. Just minutes away to the Colorado River recreation area where you can enjoy boating, swimming, and all kinds of water fun



760.360.8200 | [DesertPacificProperties.com](#) | 44267 Monterey Ave, Ste. A, Palm Desert, CA 92260

Disclaimer: The information provided has been obtained from sources believed reliable. While we do not doubt its accuracy, we have not verified it and make no guarantee, warrant or representation about it. Buyer is strongly encouraged to independently confirm its accuracy and completeness. Any projections, opinions assumptions or estimates used are for example only, and may not accurately represent the current or future performance of the property.