

1411 FORD ROAD

Bensalem, PA 19020

 **FOR LEASE**
 **INDUSTRIAL**
 **19,380 SF**



PROPERTY DESCRIPTION

- Building Description: Predominately one story, 40,000 SF industrial building.
- Available Space: 19,380 sf (102' x 190') of warehouse space. Currently 100% racked but can be removed.
- Ceiling Height: 21' - 23' clear
- Column Spacing: 47.75' x 40'
- Loading: One (1) tailgate
- Sprinkler: Dry sprinkler system
- Heat: No heat
- Lighting: Motion sensed LED lighting
- Taxes: \$34,997 (2025)

FOR MORE INFORMATION

Jared Licht

 215.396.2900 x105

 licht@naimertz.com


Jeffrey Licht, SIOR

 215.396.2900 x101

 bucks@naimertz.com

NAI MERTZ DISCLAIMER: NO WARRANTY OR REPRESENTATION, EXPRESS OR IMPLIED, IS MADE AS TO THE ACCURACY OF THE INFORMATION CONTAINED HEREIN, AND THE SAME IS SUBMITTED SUBJECT TO ERRORS, OMISSIONS, CHANGE OF PRICE, RENTAL OR OTHER CONDITIONS, PRIOR SALE, LEASE OR FINANCING, OR WITHDRAWAL WITHOUT NOTICE, AND OF ANY SPECIAL LISTING CONDITIONS IMPOSED BY OUR PRINCIPALS. NO WARRANTIES OR REPRESENTATIONS ARE MADE AS TO THE CONDITION OF THE PROPERTY OR ANY HAZARDS CONTAINED THEREIN ARE ANY TO BE IMPLIED. OUTLINES ARE APPROXIMATE AND SHOWN ONLY TO IDENTIFY THE PARCEL IN CONSIDERATION.

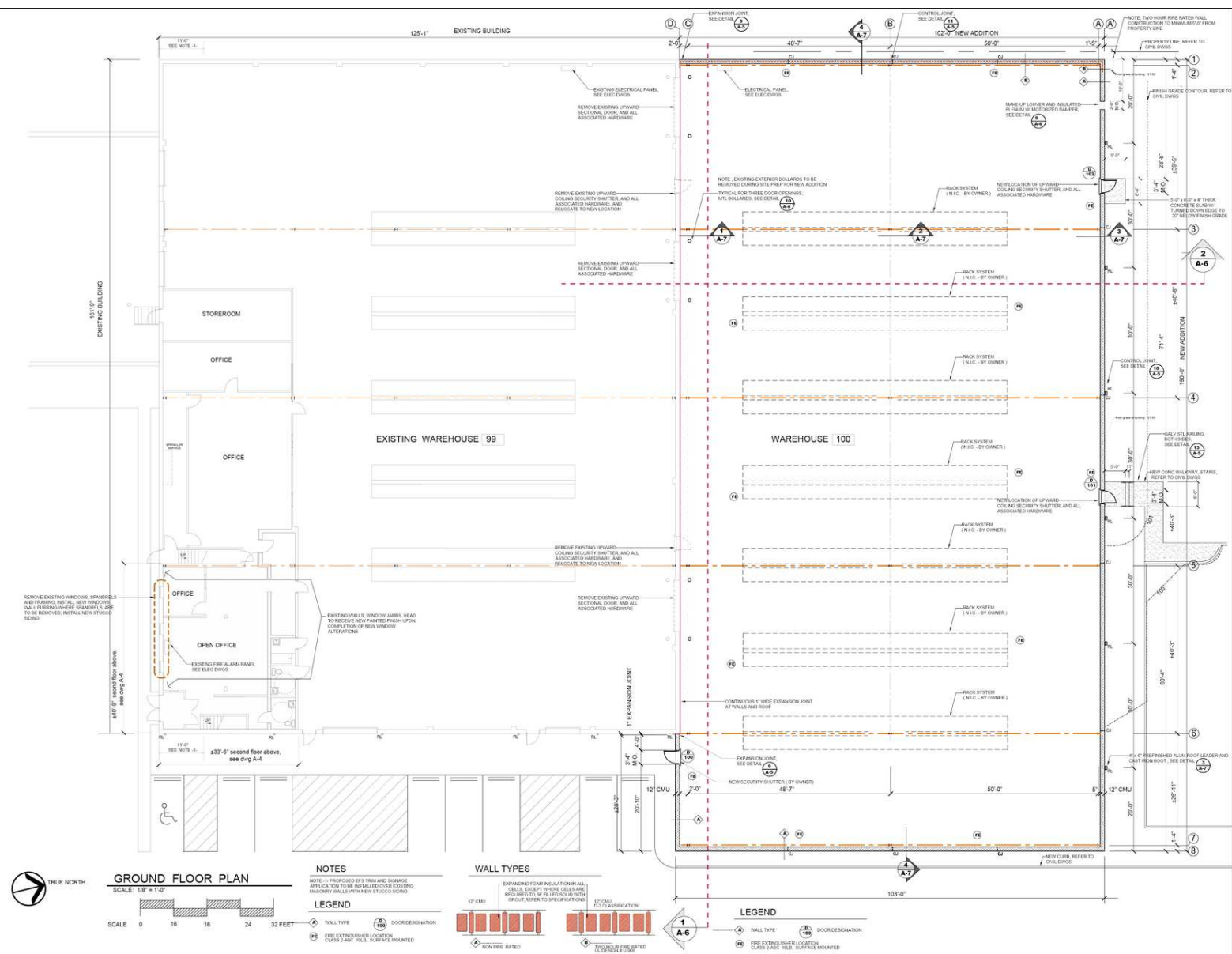
NAI Mertz

 **NAI Mertz** | 210 E. Street Road, Suite 3B
Feasterville-Trevose, PA 19053
215-396-2900 | naimertz.com



Bensalem, PA 19020

FOR LEASE
INDUSTRIAL
19,380 SF

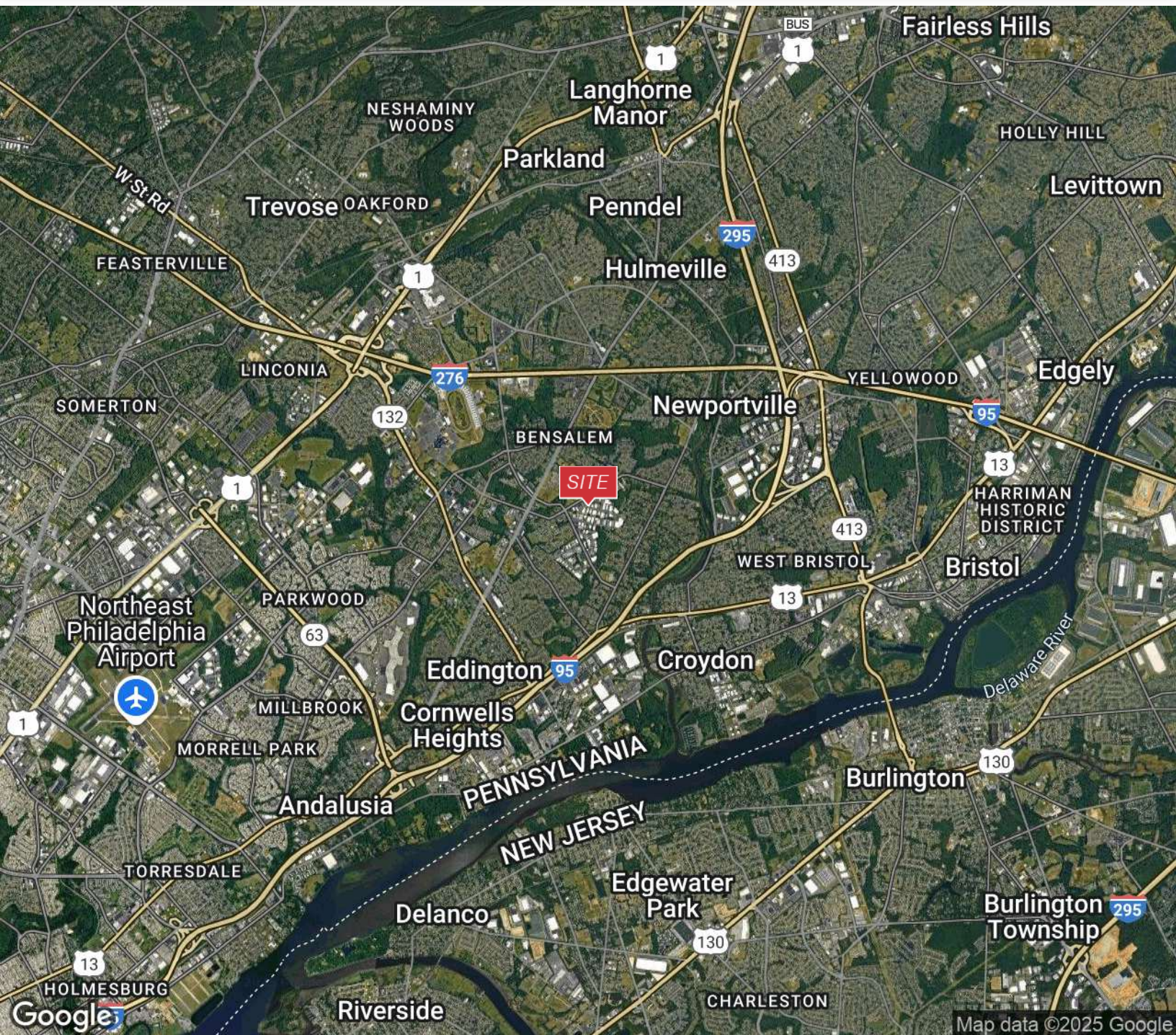


[!\[\]\(666e09182d4cd268646ea700ea60dcdf_img.jpg\)](#)
[!\[\]\(1ef1ef0bf9af6c6996401964cf280f2d_img.jpg\)](#)
[!\[\]\(e9a80c8557f9285916925bd4ac40fff5_img.jpg\)](#)
[!\[\]\(88e2edecff3400e68a80dd08c57d2f9c_img.jpg\)](#)
[!\[\]\(b612b1233231807474dc279cea9675f1_img.jpg\)](#)

1411 FORD ROAD

Bensalem, PA 19020

 **FOR LEASE**
 **INDUSTRIAL**
 **19,380 SF**



FOR MORE INFORMATION

Jared Licht

 215.396.2900 x105

 licht@naimertz.com


Jeffrey Licht, SIOR

 215.396.2900 x101

 bucks@naimertz.com

NAI MERTZ DISCLAIMER: NO WARRANTY OR REPRESENTATION, EXPRESS OR IMPLIED, IS MADE AS TO THE ACCURACY OF THE INFORMATION CONTAINED HEREIN, AND THE SAME IS SUBMITTED SUBJECT TO ERRORS, OMISSIONS, CHANGE OF PRICE, RENTAL OR OTHER CONDITIONS, PRIOR SALE, LEASE OR FINANCING, OR WITHDRAWAL WITHOUT NOTICE, AND OF ANY SPECIAL LISTING CONDITIONS IMPOSED BY OUR PRINCIPALS. NO WARRANTIES OR REPRESENTATIONS ARE MADE AS TO THE CONDITION OF THE PROPERTY OR ANY HAZARDS CONTAINED THEREIN ARE ANY TO BE IMPLIED. OUTLINES ARE APPROXIMATE AND SHOWN ONLY TO IDENTIFY THE PARCEL IN CONSIDERATION.

NAI Mertz

 **NAI Mertz** | 210 E. Street Road, Suite 3B
Feasterville-Trevose, PA 19053
215-396-2900 | naimertz.com

