

2914-2916 Palourde Lake Road

INDUSTRIAL WATERFRONT FACILITY | MORGAN CITY, LOUISIANA 70380

PALOURDE LAKE RD



FOR SALE | ± 5.18 ACRES

CBRE

Property Description



The subject has an ample overhead restriction of 54', and is situated on the Avoca Island Cutoff waterway providing access to the Intracoastal Waterway and the open waters of the Gulf of Mexico.

±5.18

ACRES

±225,641

SQUARE FEET

±4,536

SF WAREHOUSE
IMPROVEMENTS

±3,064

SF OFFICE
IMPROVEMENTS

±506

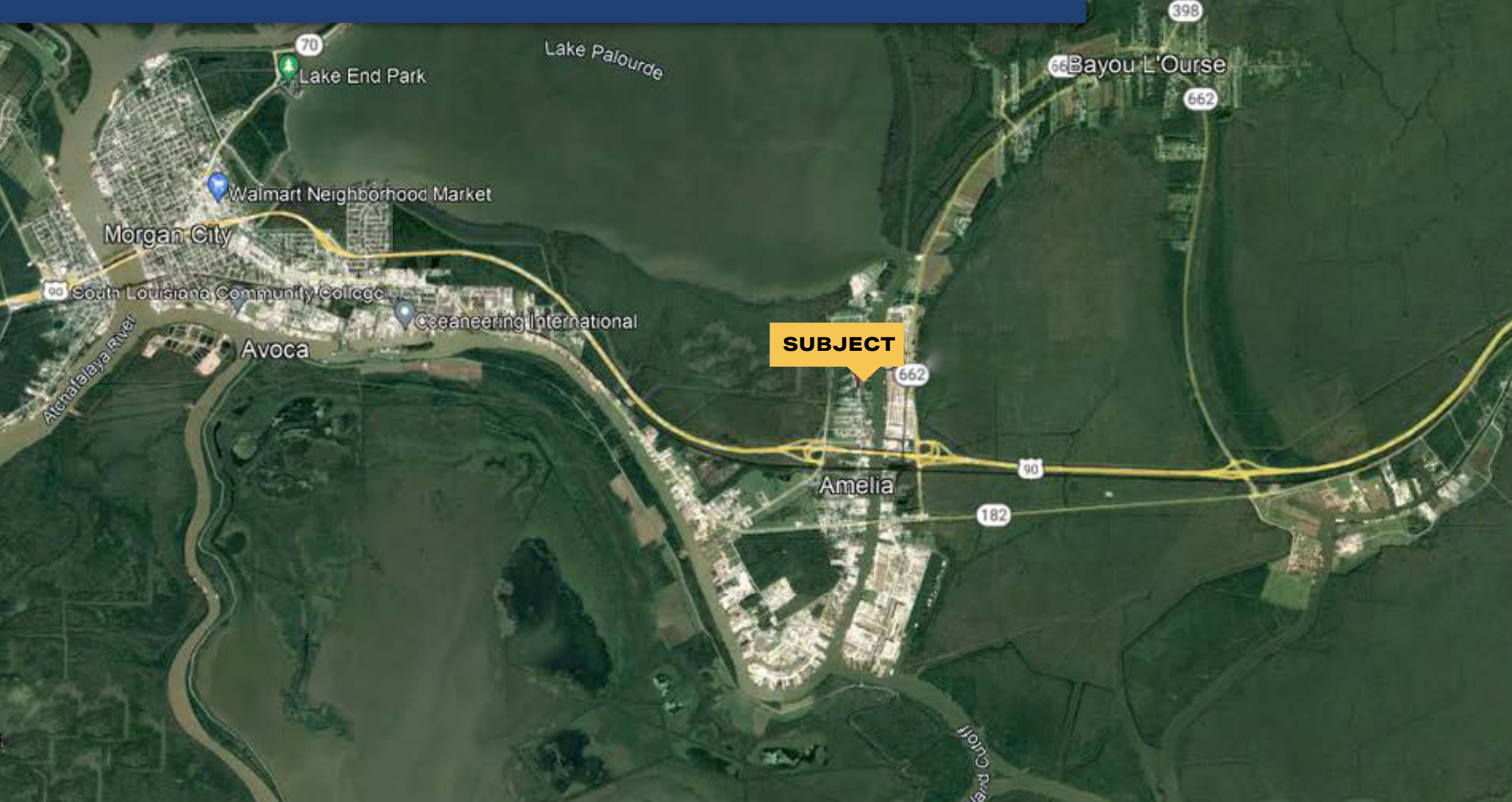
LF WATER
FRONTAGE

±282

LF IMPROVED
BULKHEAD

2914-2916 Palourde Road

INDUSTRIAL WATERFRONT FACILITY | MORGAN CITY, LOUISIANA 70380



FOR MORE INFORMATION, PLEASE CONTACT:

BRYCE FRENCH
+1 504 427 2090
bryce.french@cbre.com

MAX J. DERBES, INC.
+1 504 733 4555
info@maxderbes.com

CBRE

 Max J. Derbes, Inc.
REALTORS