

LEASE 605 PALENCIA CLUB DRIVE, SAINT AUGUSTINE, FL

605 Palencia Club Drive St. Augustine, FL 32095



PROPERTY DESCRIPTION

Discover the ideal location for your business at 605 Palencia Club Drive in St. Augustine, FL. This exceptional property offers a prime leasing opportunity, boasting modern amenities and a versatile layout to suit a variety of business needs. With its pristine architectural design and abundant natural light, this space creates an inviting and productive work environment. The efficient floor plan maximizes functionality, while the convenient location provides easy access for both employees and clients. Elevate your business with this strategically positioned lease opportunity at 605 Palencia Club Drive.

PROPERTY HIGHLIGHTS

- Modern architectural design
- Abundant natural light
- Versatile layout for various businesses
- Prime leasing opportunity
- Convenient location for employees and clients

OFFERING SUMMARY

Lease Rate:	\$19.00 SF/yr (NNN)
Number of Units:	3
Available SF:	1,975 - 4,537 SF
Building Size:	4,537 SF

DEMOGRAPHICS	0.3 MILES	0.5 MILES	1 MILE
Total Households	202	547	1,956
Total Population	575	1,582	5,747
Average HH Income	\$152,108	\$162,013	\$175,570

Adam Lanteigne
(904) 584-7777
adam@soldin904.com

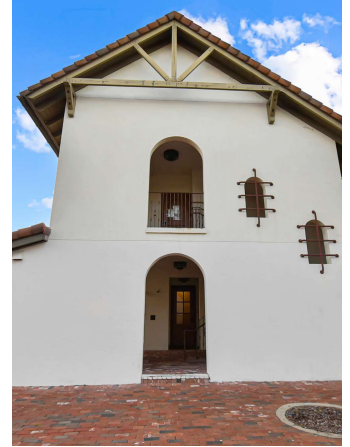
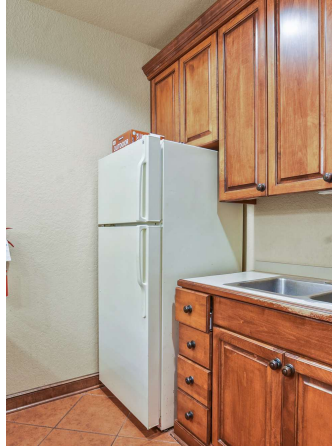
Bob Buckmaster, CCIM
(904) 827-1717
bob@thepremierproperties.com



**COLDWELL BANKER
COMMERCIAL**
PREMIER PROPERTIES

LEASE 605 PALENCIA CLUB DRIVE, SAINT AUGUSTINE, FL

605 Palencia Club Drive St. Augustine, FL 32095



Adam Lanteigne
(904) 584-7777
adam@soldin904.com

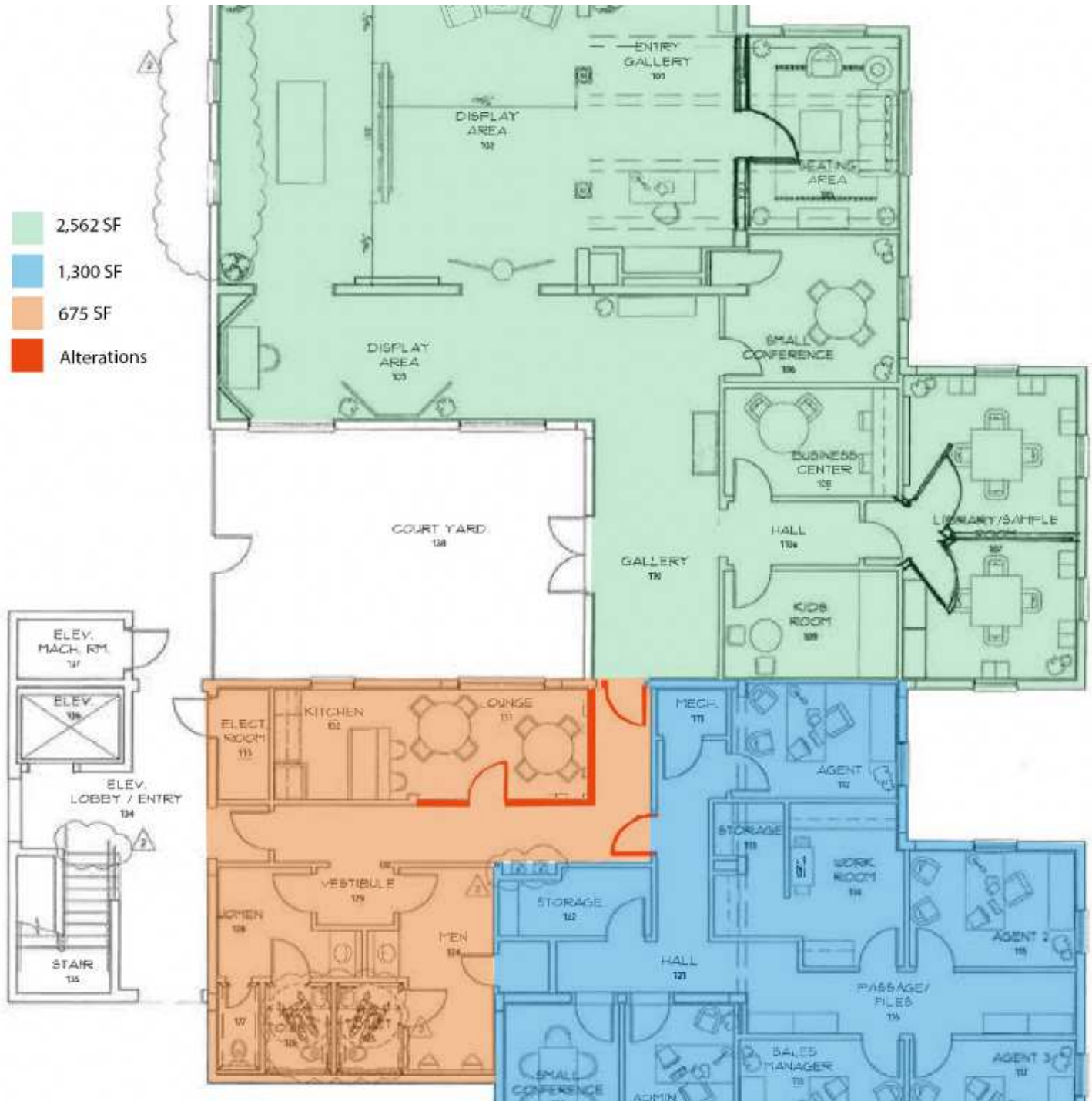
Bob Buckmaster, CCIM
(904) 827-1717
bob@thepremierproperties.com



**COLDWELL BANKER
COMMERCIAL**
PREMIER PROPERTIES

LEASE 605 PALENCIA CLUB DRIVE, SAINT AUGUSTINE, FL

605 Palencia Club Drive St. Augustine, FL 32095



Adam Lanteigne
(904) 584-7777
adam@soldin904.com

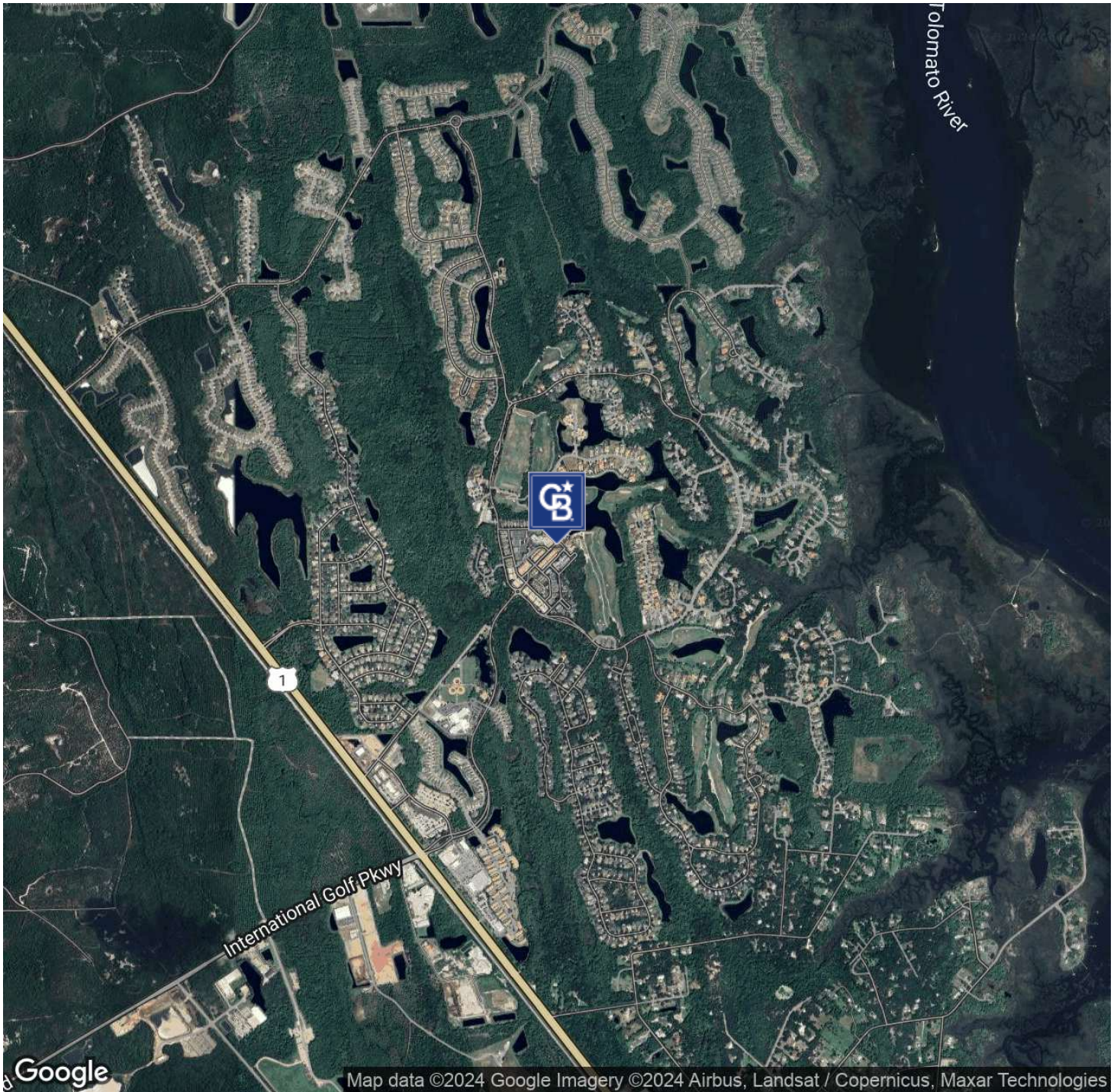
Bob Buckmaster, CCIM
(904) 827-1717
bob@thepremierproperties.com



**COLDWELL BANKER
COMMERCIAL**
PREMIER PROPERTIES

LEASE 605 PALENCIA CLUB DRIVE, SAINT AUGUSTINE, FL

605 Palencia Club Drive St. Augustine, FL 32095



Adam Lanteigne
(904) 584-7777
adam@soldin904.com

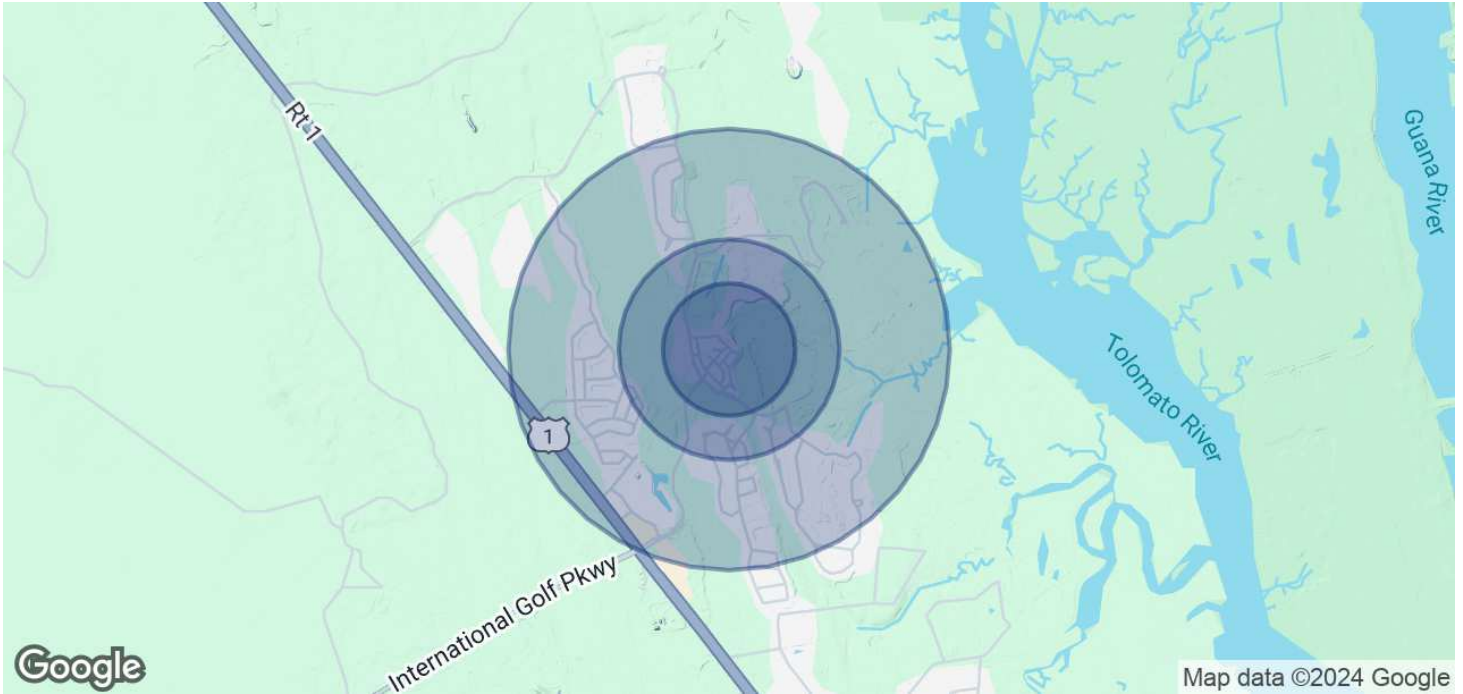
Bob Buckmaster, CCIM
(904) 827-1717
bob@thepremierproperties.com



**COLDWELL BANKER
COMMERCIAL**
PREMIER PROPERTIES

LEASE 605 PALENCIA CLUB DRIVE, SAINT AUGUSTINE, FL

605 Palencia Club Drive St. Augustine, FL 32095



POPULATION

0.3 MILES

0.5 MILES

1 MILE

Total Population

575

1,582

5,747

Average Age

44

43

43

Average Age (Male)

44

43

43

Average Age (Female)

43

43

43

HOUSEHOLDS & INCOME

0.3 MILES

0.5 MILES

1 MILE

Total Households

202

547

1,956

of Persons per HH

2.8

2.9

2.9

Average HH Income

\$152,108

\$162,013

\$175,570

Average House Value

\$798,258

\$800,334

\$803,175

Demographics data derived from AlphaMap

Adam Lanteigne

(904) 584-7777

adam@soldin904.com

Bob Buckmaster, CCIM

(904) 827-1717

bob@thepremierproperties.com



**COLDWELL BANKER
COMMERCIAL**
PREMIER PROPERTIES