

FOR LEASE

Greenbrier Point - 1403 Greenbrier Parkway | Chesapeake, VA 23320

For more information regarding this property, please contact:

Patrick L. Reynolds, CCIM

757 343 4666

patrickreynolds@naidominion.com

Matt Wilbricht

757 270 6956

mattwilbricht@naidominion.com



FOR LEASE

1403 Greenbrier Parkway | Chesapeake, VA 23320



MAIN LOBBY



SUITE 110 DRIVE-THRU



LOBBY – SUITE 110



FRONT ENTRANCE



ELECTRONIC MONUMENT SIGNAGE



FOR LEASE

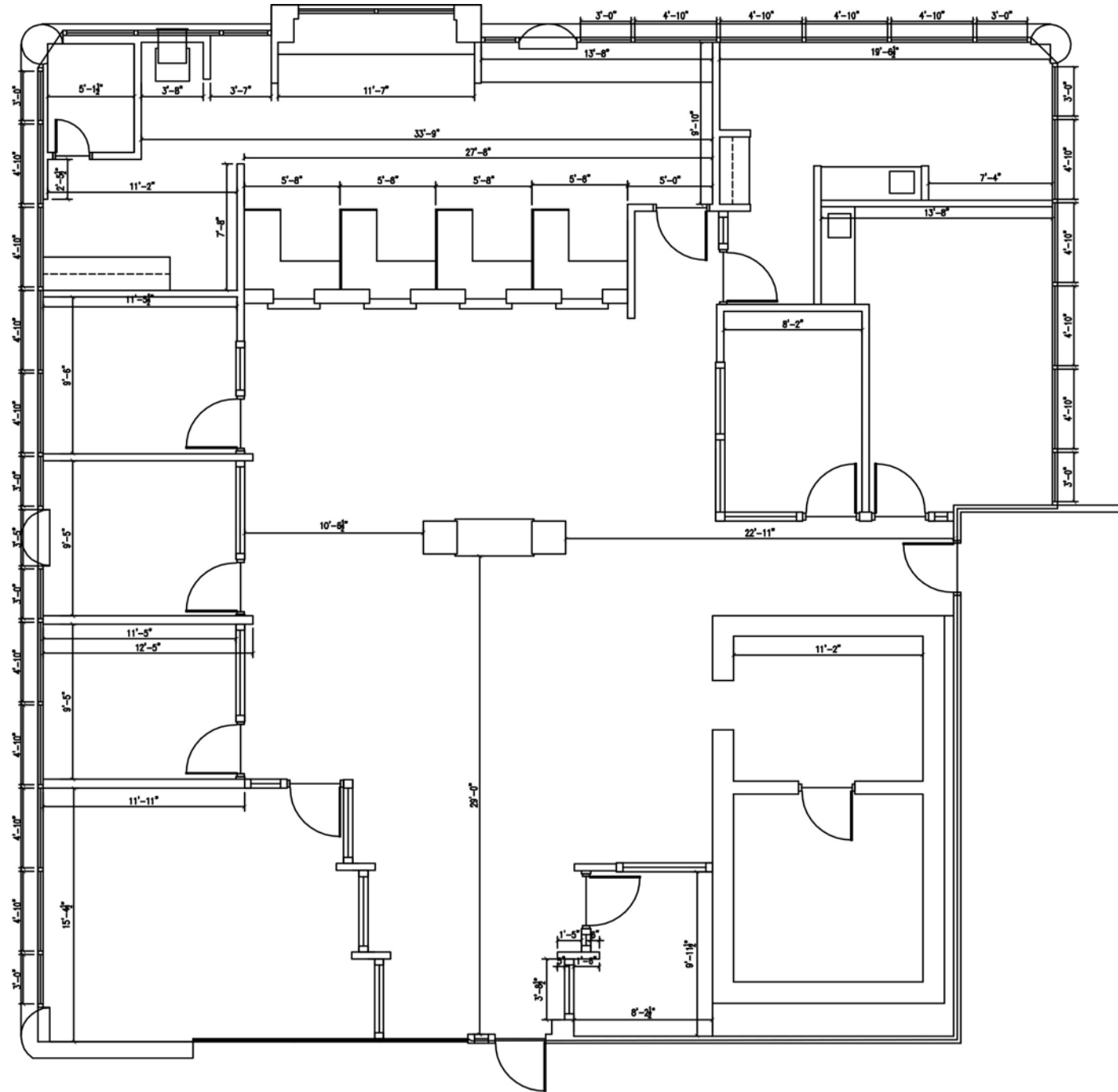
1403 Greenbrier Parkway, Suite 110 | Chesapeake, VA 23320

Suite: 110

First Floor – Off Lobby

3,835 RSF

FLOOR PLAN

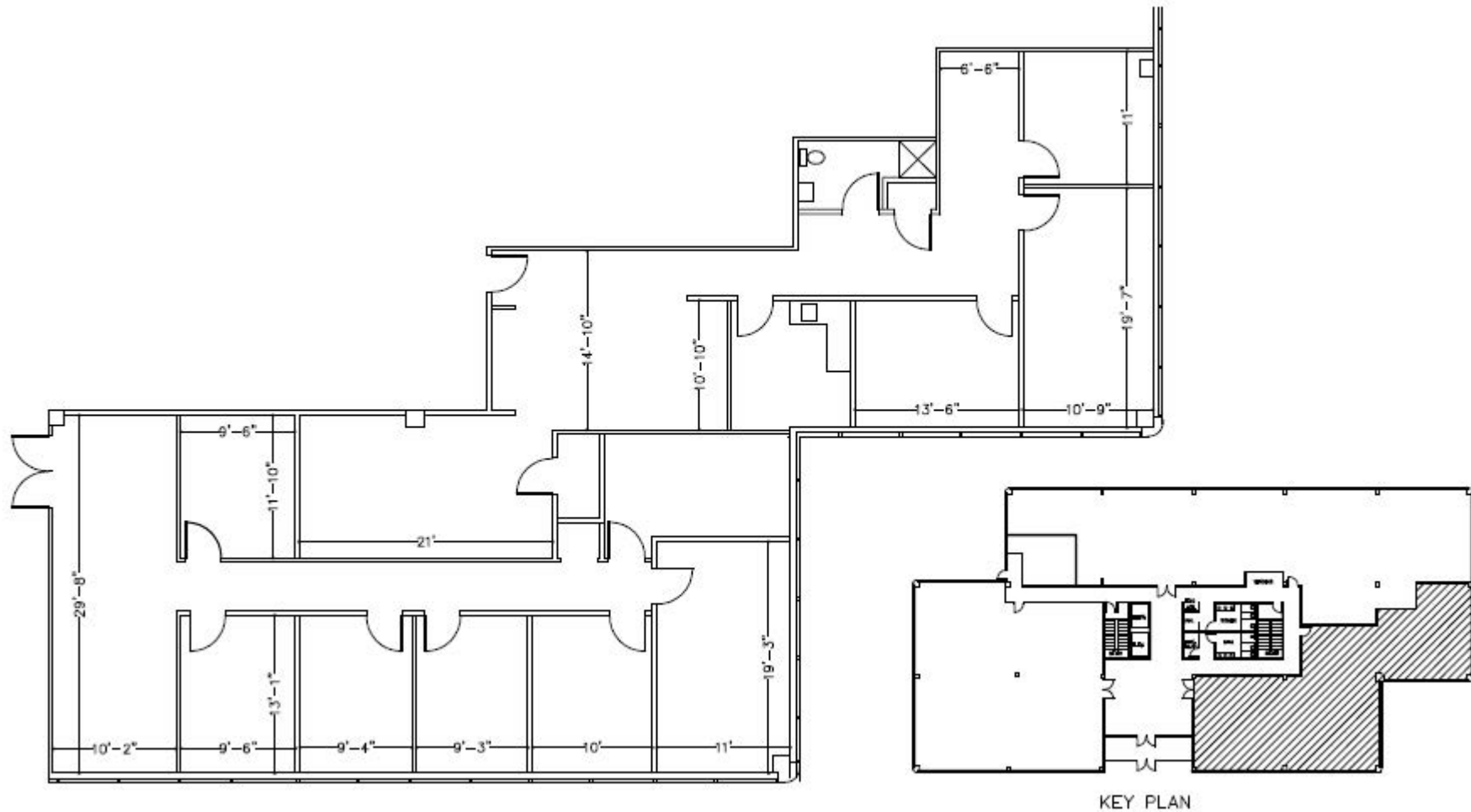




Suite: 100/125

3,511 RSF (can subdivide)

First Floor **FLOOR PLAN**



KEY PLAN

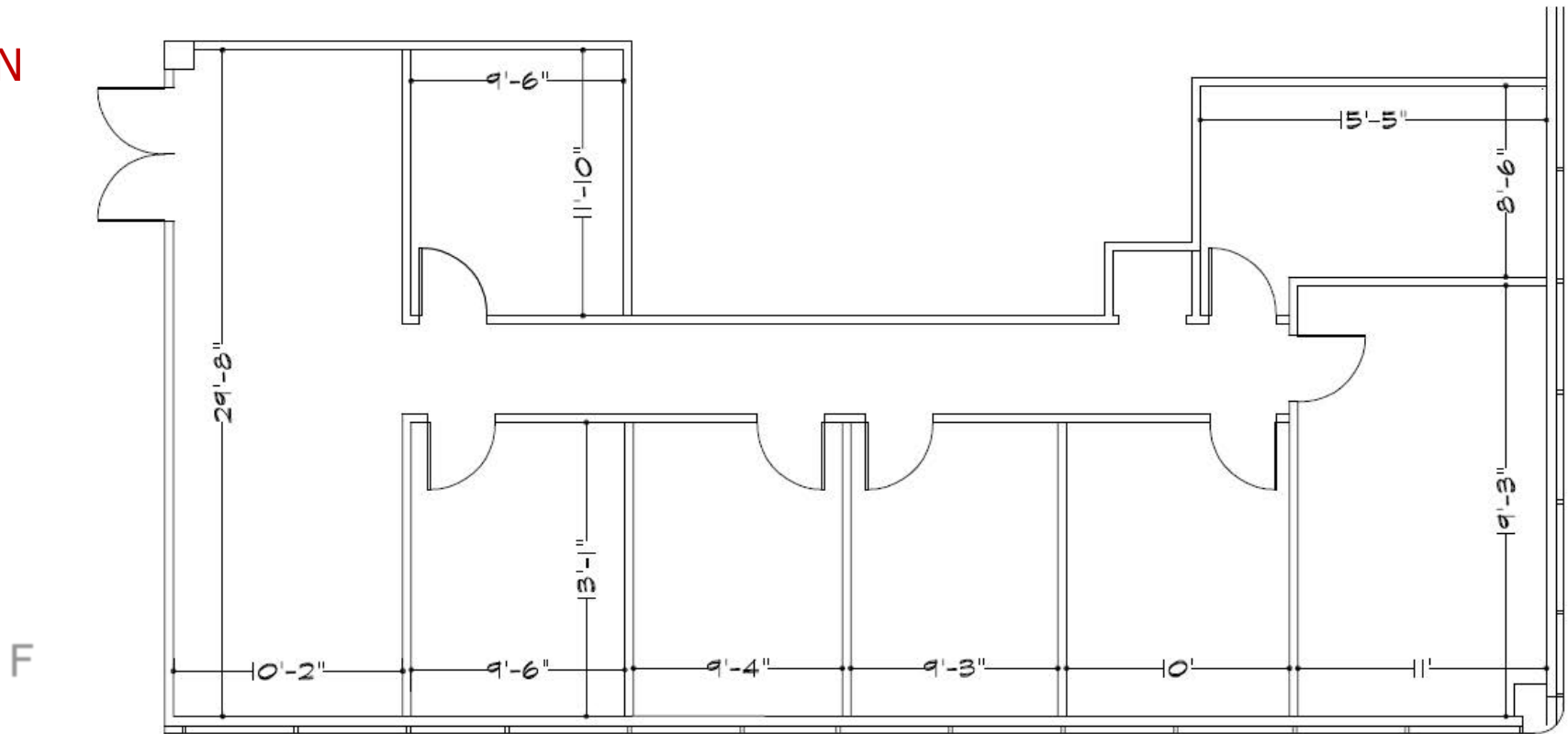
FLOOR PLAN



Suite: 100

1,764 RSF

FLOOR PLAN

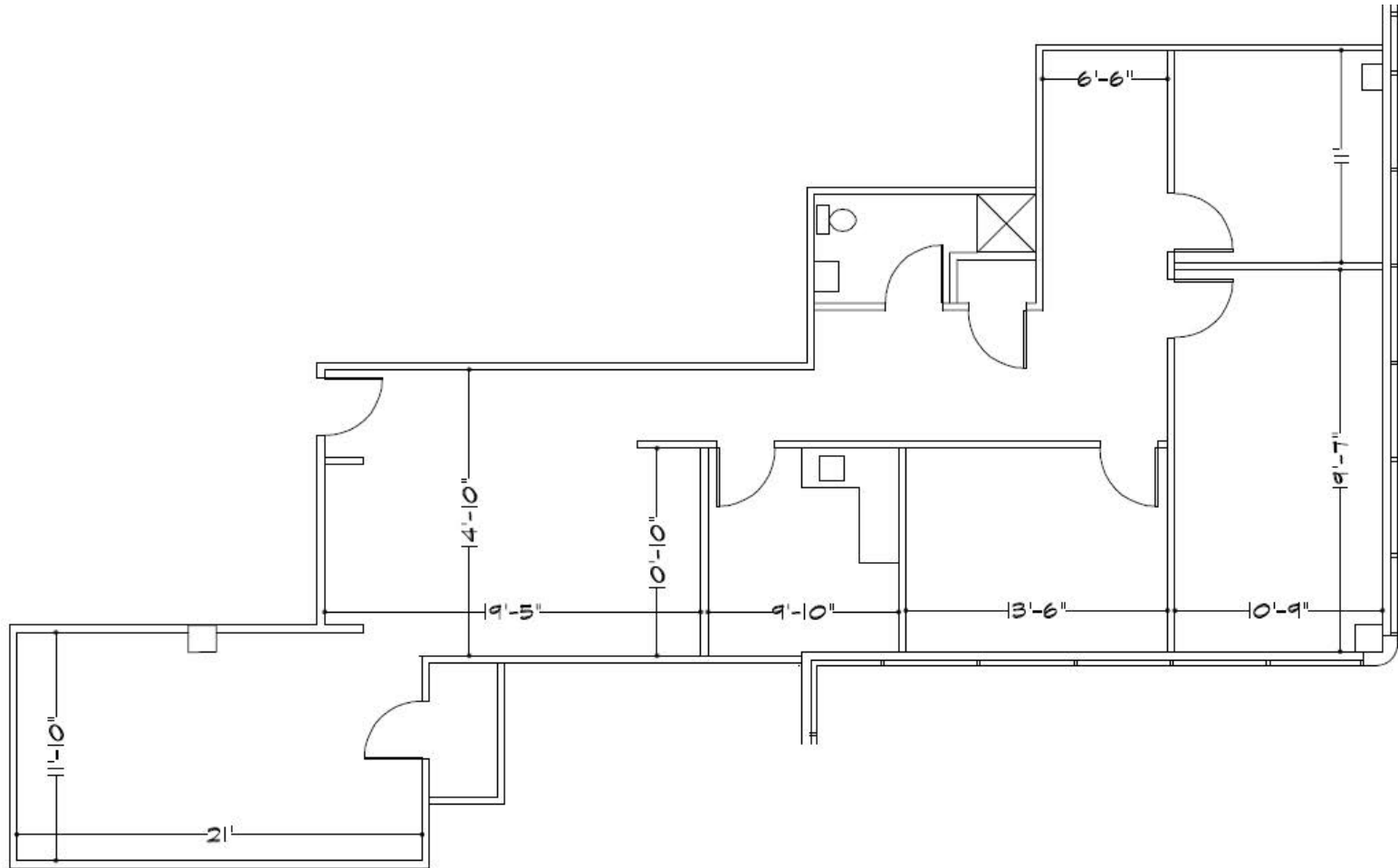




Suite: 125

1,747 RSF

FLOOR PLAN

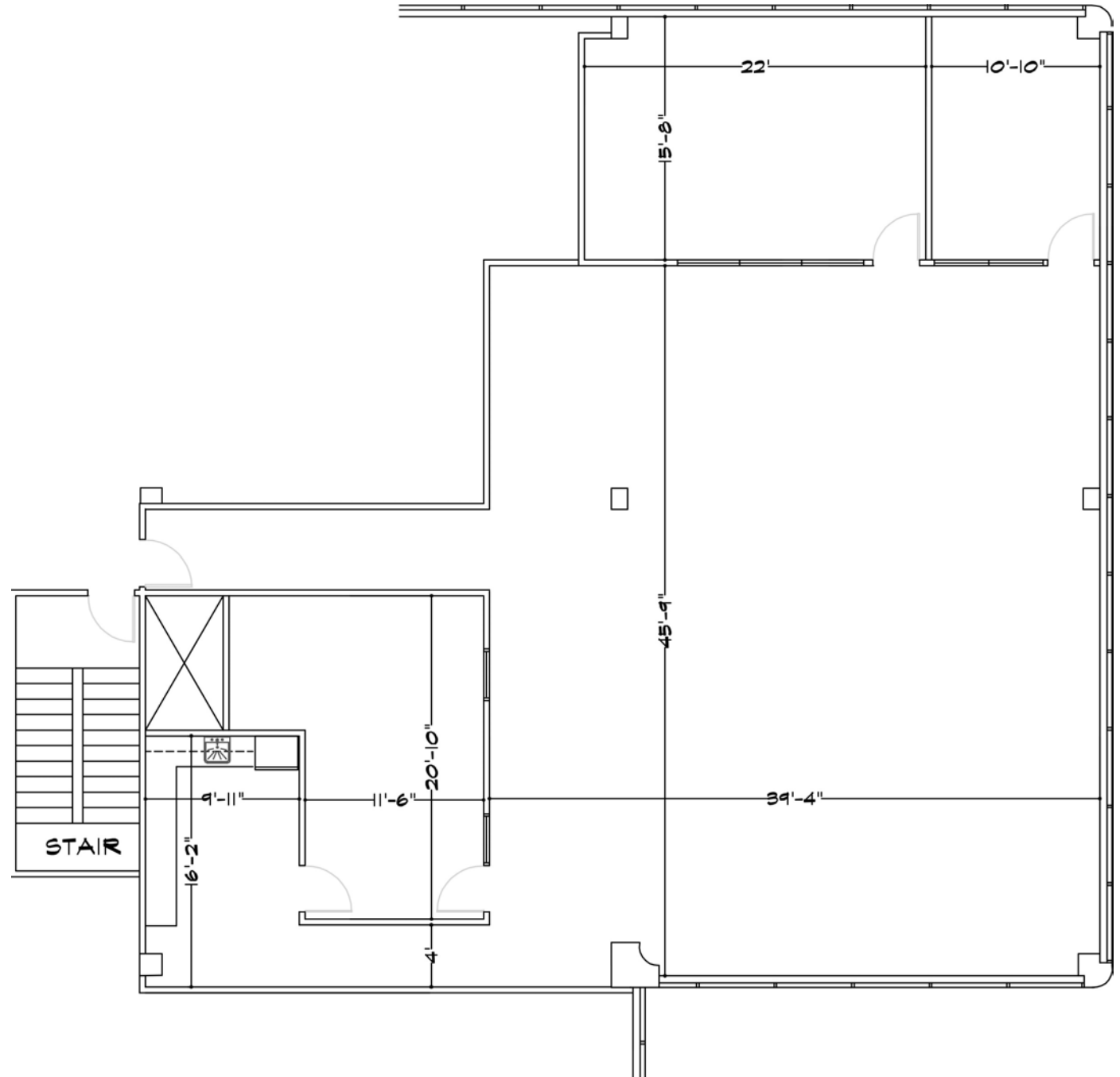




Suite: 550

3,482 RSF (Can Sub-divide)

FLOOR PLAN

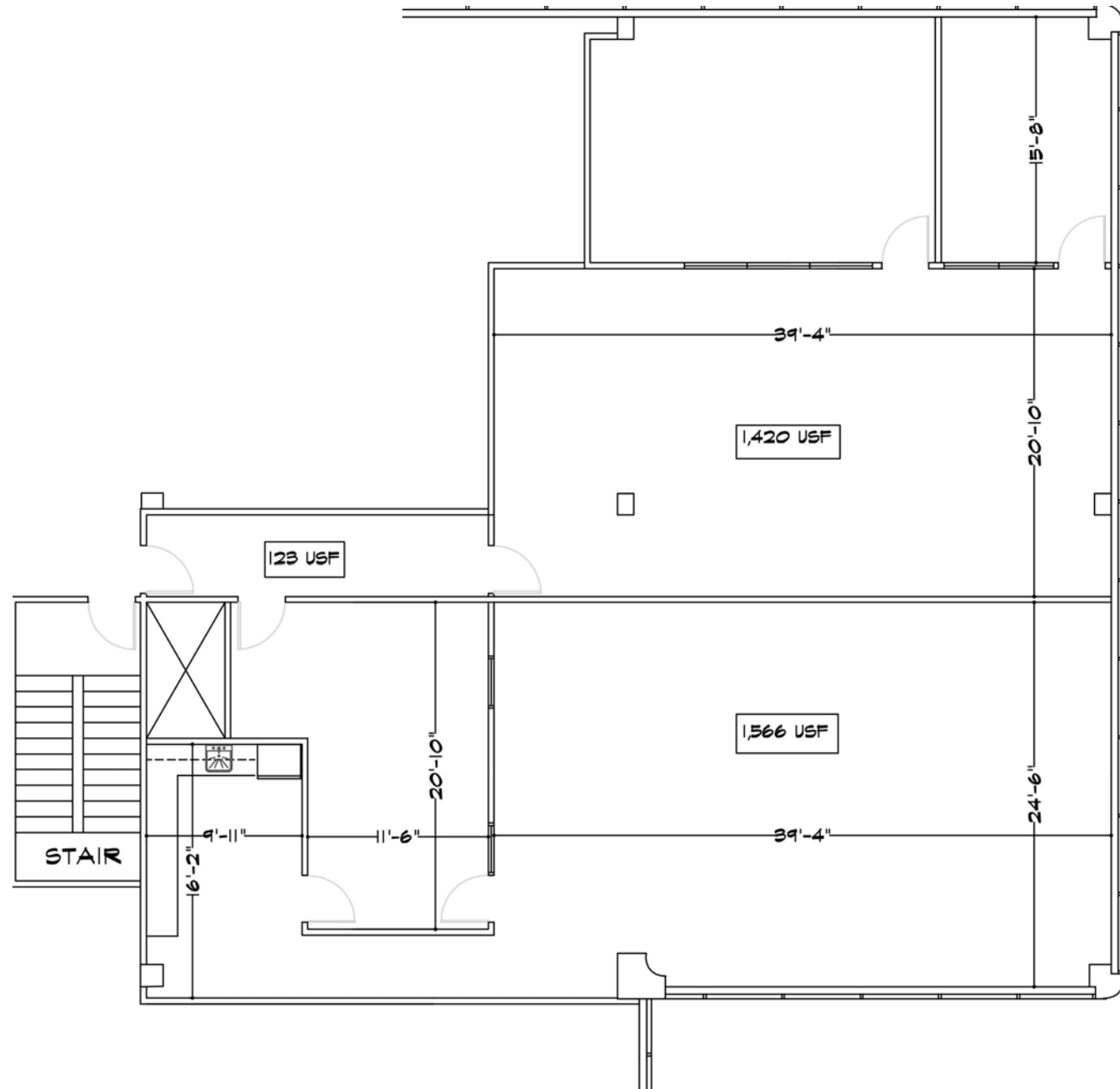




Suite: 550 (Sub-divided)

1,590 RSF

1,753 RSF





FOR LEASE

1403 Greenbrier Parkway, | Chesapeake, VA 23220/A

SITE PLAN

STRIPED PARKING
SPACE TABLE

Total Spaces: 375





FOR LEASE

1402 Greenbrier Parkway | Chesapeake, VA 23320



Freestanding Building



Professional Maintenance and Management



Great Access to Major Arterials



Proximity to Various Amenities



Prominent Building and monument Signage available



375 Parking Spaces

DISTANCE TO

- ➔ NORFOLK INTERNATIONAL AIRPORT - 15 MINS I-
- ➔ DOWNTOWN NORFOLK - 10 MINS
- ➔ NEAREST HOSPITAL – 7 MINS
- ➔ 64 HIGHWAY ACCESS - 1 MIN
- ➔ NEAREST AMENITIES – 1 MIN
- ➔ URGENT CARE – 3 MINS

FOR LEASE

1403 Greenbrier Parkway | Chesapeake, VA 23320

SIGNIFICANT OPERATIONS IN GREEN BRIER

GENERAL DYNAMICS

MITSUBISHI

FirstData

CHESAPEAKE REGIONAL HEALTHCARE

VOLVO

SENTARA

COX



DOLLAR TREE

