

Bayville Commons

333 Route 9, Bayville, NJ

For Lease | 870 SF

ALAN WALKER
 awalker@jefferyrealty.com
 C: 732.485.9364
 O: 908.668.9600

SHANE WIERKS
 swierks@jefferyrealty.com
 C: 908.581.7781
 O: 908.668.9600



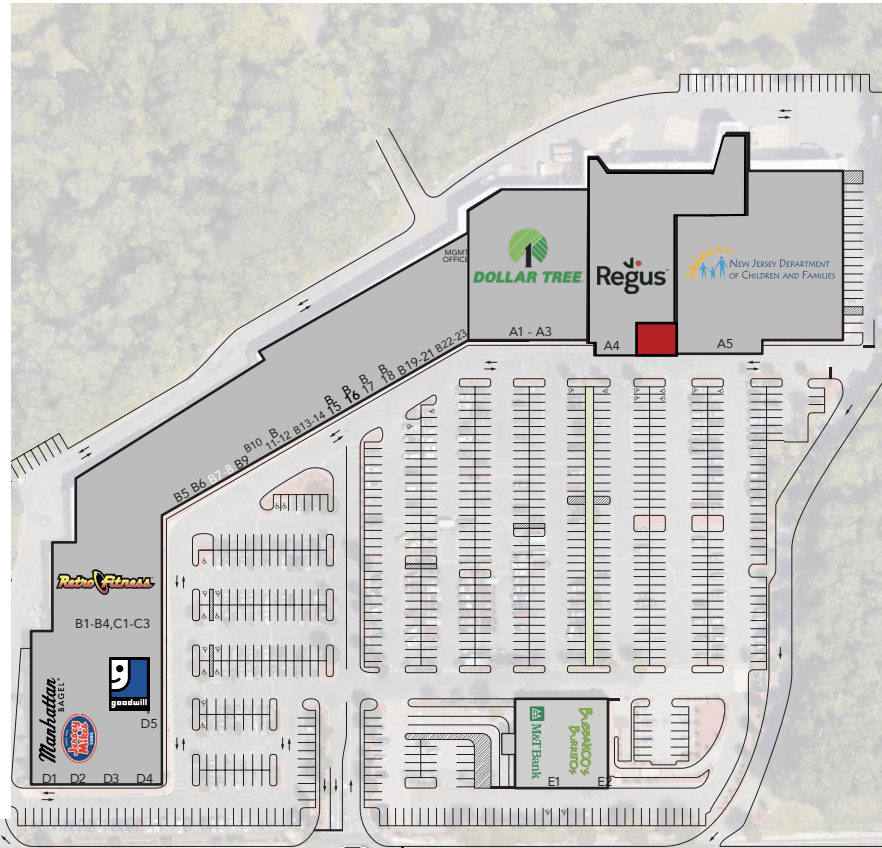
Bayville Commons

333 Route 9, Bayville, NJ

For Lease | 870 SF

TENANTS & AVAILABILITIES

A1	Family Dollar	70'x158'	10,582 SF
A2-A3	Dollar Tree	70'x158'	11,060 SF
A4	Regus Office	120'x196'	21,547 SF
A5	NJDPMC	160'x180'	27,725 SF
B1-C3	Retro Fitness		21,710 SF
B5	Miseno Sun Spa	15'x75'	1,125 SF
B6	Hot Rod Inkin'	15'x75'	1,125 SF
B7-B8	Lease Out	35'x75'	2,625 SF
B9	Bella Cucina	25'x75'	1,875 SF
B10	Bella Cucina	15'x75'	1,125 SF
B11-B12	Smoke Shop	15'x75'	2,250 SF
B13-B14	Off Leash K-9	45'x95'	3,730 SF
B15	Lease Out	20'x95'	1,900 SF
B16	Lease Out	20'x95'	2,375 SF
B17	A-1 Cleaners	15'x95'	1,425 SF
B18	Nova Care Rehab	30'x95'	2,850 SF
B19-B21	Peek A Boo Playhouse	45'x95'	4,275 SF
B22-B23	Berkeley Liquors	37'x95'	5,170 SF
D1	Manhattan Bagel	30'x50'	1,450 SF
D2	Jersey Mike's Subs	30'x50'	1,650 SF
D3	Banji Japanese Restaurant	32'x60'	1,920 SF
D4	Studio Nails	45'x60'	2,700 SF
D5	Goodwill	100'x137'	13,700 SF
E1	M&T Bank		3,189 SF
E2	Bubbakoo's Burritos		3,234 SF



AVAILABLE

870 SF Cafe Inside A4

RENT

Call for Quote

NNN

\$5.15 PSF
Tax: \$2.01
Cam: \$3.14

GLA

155,693 SF

PARKING

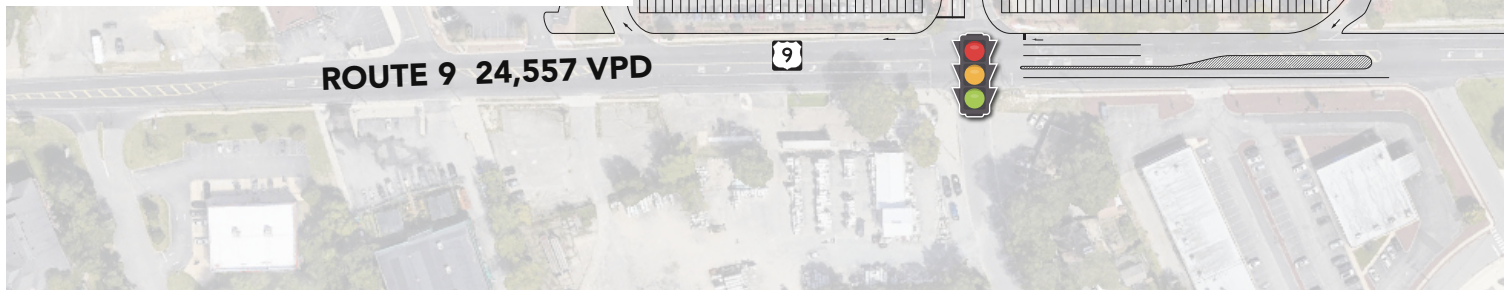
785 Spaces

TRAFFIC

24,557 VPD On Route 9

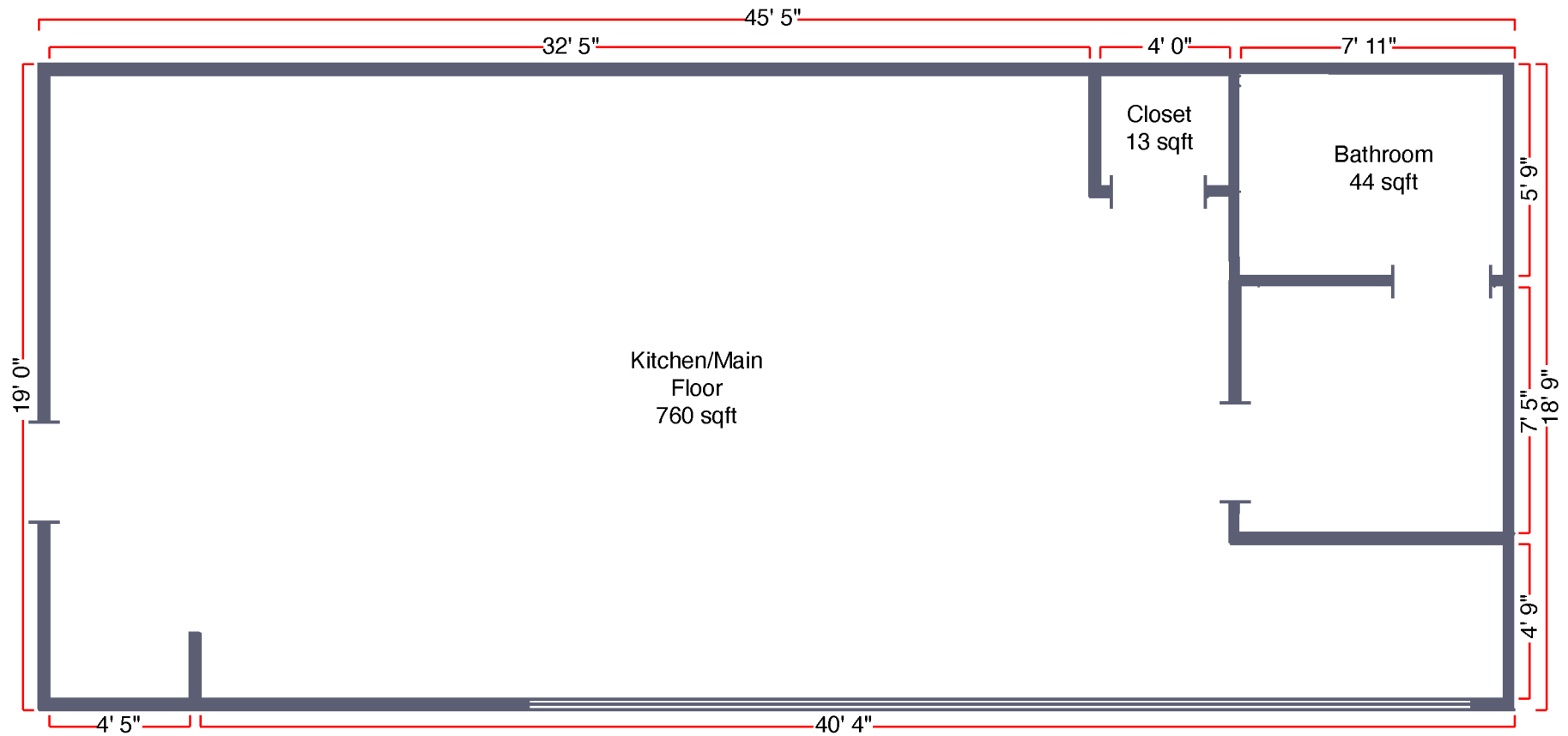
NOTES

- Signalized Intersection
- Highly Visible Pylon
- Easy Access To GSP
- Near Hidden Creek Apartments (236 1 & 2 Bedroom Units)



Bayville Commons

333 Route 9, Bayville, NJ



Bayville Commons

333 Route 9, Bayville, NJ



DEMOGRAPHICS

	TOTAL POPULATION	AVERAGE HHI	HOUSEHOLDS	TOTAL BUSINESSES	TOTAL EMPLOYEES
1 Mile	8,658	\$118,488	3,369	198	1,328
3 Miles	52,888	\$132,743	19,220	1,446	10,266
5 Miles	115,207	\$128,956	43,813	4,194	36,057

