



# CITY OF LESTER PRAIRIE INDUSTRIAL PARK

Flexible Lot Sizes,  
Shovel-Ready



## LAND FOR SALE

County Road 9  
Lester Prairie, MN  
55354



Zach Synstegaard, JD  
*Advisor*  
612.860.2547  
zsynstegaard@iagcommercial.com



Jeff LaFavre, CCIM, MCR  
*President*  
612.868.7429  
jlafavre@iagcommercial.com

# PROPERTY OVERVIEW

Positioned along County Road 9 in Lester Prairie, the Industrial Park site offers a rare opportunity for users seeking a shovel-ready development site. With flexible subdivision options and Industrial zoning, the property supports a wide range of uses including manufacturing, technology, warehousing and distribution, research and development, and agricultural processing.

Strategically located just off State Highway 7 and minutes from US Route 212, the site provides convenient regional connectivity for logistics, employee access, and operational efficiency. Its strong access, and development friendly characteristics make it an ideal location for a buyer ready to establish or expand their business operations. Whether you are looking to construct a purpose-built facility or position your company for long-term growth, this site delivers the location, versatility, and readiness needed to bring your project to life.

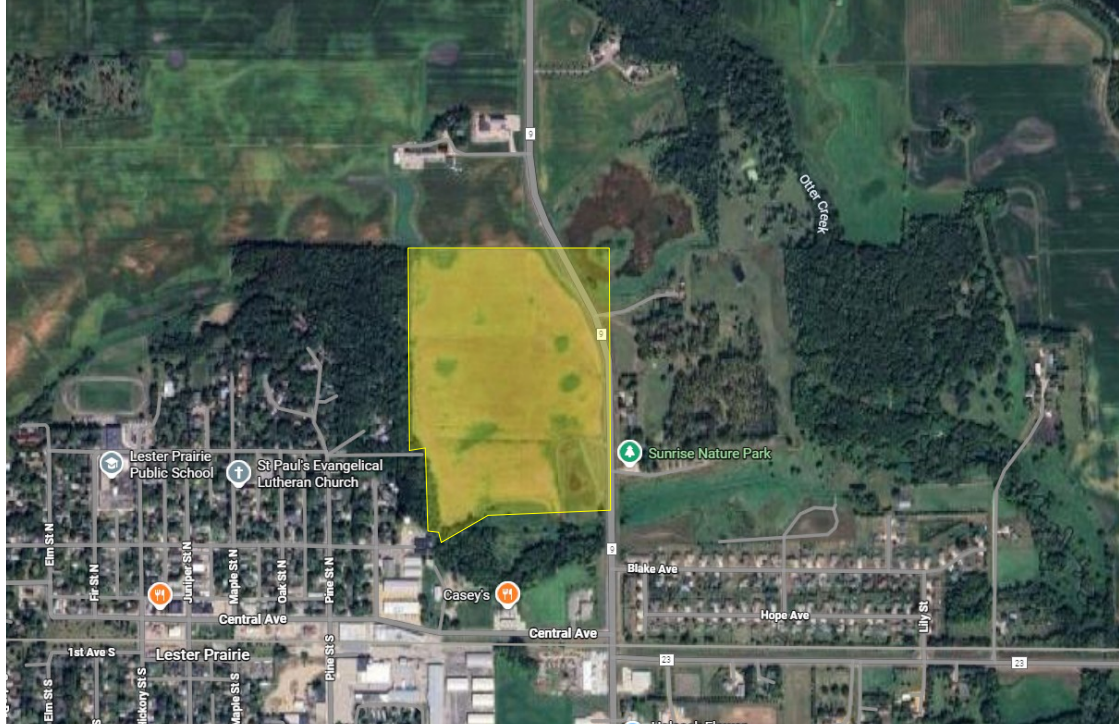
# PROPERTY FEATURES

- 23+ acres of shovel-ready industrial land
- Subdivision potential to accommodate various site plans
- Prime access to Highway 7
- Minutes from US Route 212
- Development-friendly site layout ready for immediate planning and construction

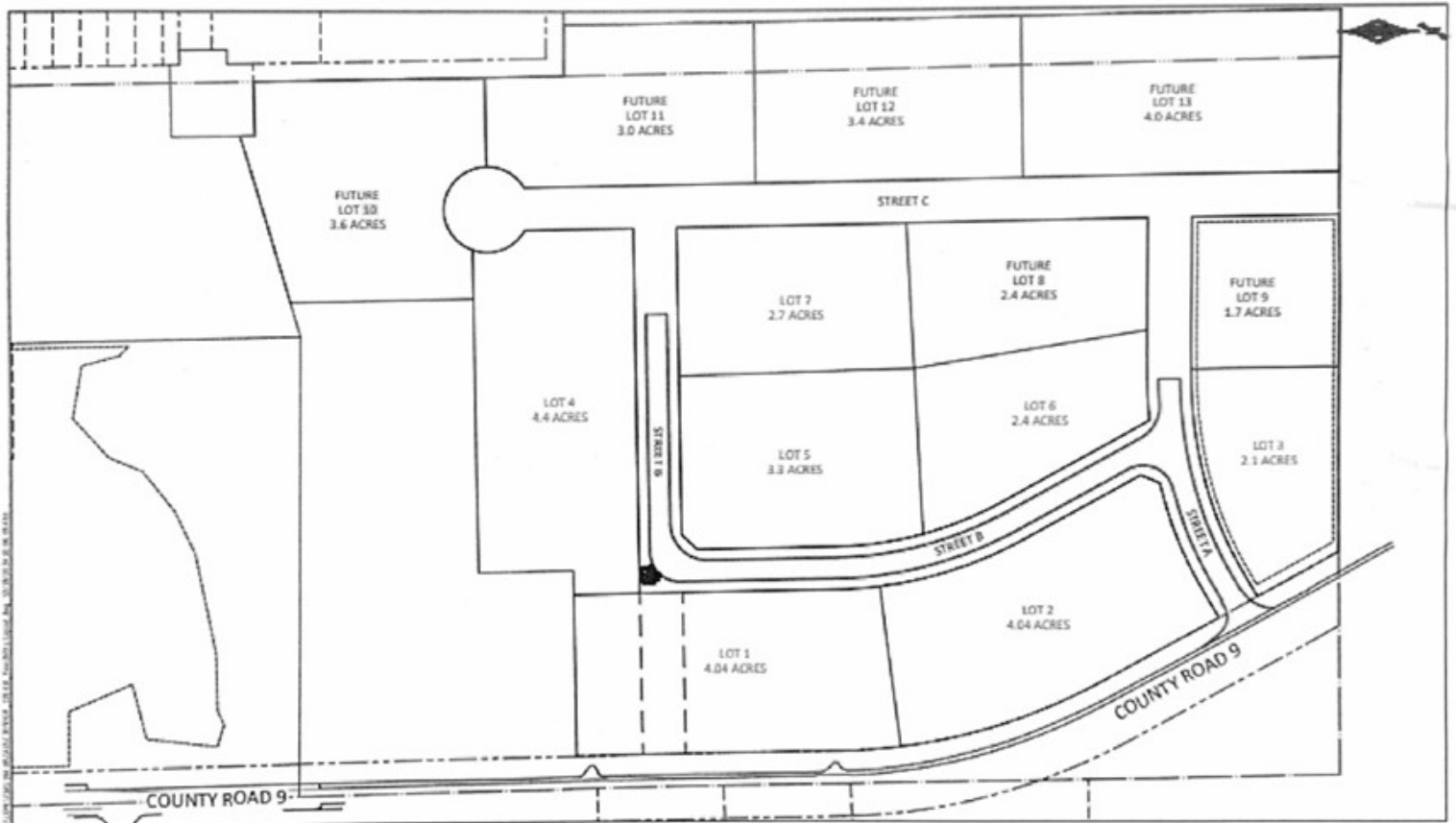
Address:	County Road 9 Lester Prairie, MN 55354
Acreage:	23+ acres (Able to be subdivided)
List Price:	\$2.00/SF
Zoning:	Industrial  Permitted Uses: Manufacturing Technology Warehousing & Distribution Research & Development Agricultural Processing
County:	McLeod











- Flexible lot sizes
- Full utilities
- Regional stormwater pond