

Office for Lease

# 1500 West Georgia

## LOCATION

1500 West Georgia St.  
Vancouver, BC  
V6G 2Z6, Canada

## LEASING CONTACTS

ALYCIA KAMER  
Director, Commercial Leasing  
604 558 8665  
[akamer@bosaproperties.com](mailto:akamer@bosaproperties.com)

CALLY ZERING  
Leasing Manager, Commercial  
778 357 0175  
[czering@bosaproperties.com](mailto:czering@bosaproperties.com)

RACHEL SANGHA  
Leasing Coordinator, Commercial  
604 416 0286  
[rsangha@bosaproperties.com](mailto:rsangha@bosaproperties.com)



**bosa  
properties**

## BUILDING OVERVIEW











A unique, 20-storey landmark office tower featuring a water cascade and spectacular panoramic views of the north shore mountains, Stanley Park, Coal Harbour Marina, and English Bay.



## LOCATION

1500 West Georgia Street is situated on the western periphery of downtown Vancouver and minutes from the financial district, the North Shore, walking distance to restaurants and shopping along Robson and Denman Streets, Coal Harbour Marina and Stanley Park seawall.

## BUILDING FEATURES

-  Contemporary Lobby
-  Modern Common Area
-  Natural Light
-  Spectacular Views
-  Fitness Facilities
-  Boardroom
-  Common Kitchen
-  Secure Bike Storage
-  BOMA Energy Champion
-  24/7/365 Accessibility

## OFFICE AREA

193,067 SF

## TYPICAL FLOOR PLATE

11,384 SF

## YEAR BUILT

1978

## FLOORS

20

## CLASS

A

## ELEVATORS

Six high speed programmable elevators

## SECURITY

Card key access to building and elevators, programmable through the landlord. 16 camera digital CCTV system, bike and guard patrols.



OFFICE AVAILABILITY

Opportunity to lease 691 sf up to 11,370 sf of class A office space in one of downtown Vancouver’s highest profile office towers.



AVAILABLE UNITS

UNIT	SF	DESCRIPTION
450	6,108	Shell condition. Demising options available.
658	2,142	Improved view office space. Mostly open area.
700	11,370	Improved office space. Mostly open area.
800	9,483	Mostly open area with large lunch room.
975	691	Open area with small kitchenette.
1070	2,699	Improved office space. Mostly open area.
1580	1,221	Improved view office space.
1590	1,102	Improved view office space. Three private offices.
1900	6,047	Improved view office space.
2000	6,043	Improved view office space.

ASKING BASE RENT

\$25.00/sf

OPERATING EXPENSES

Approximately \$24.59/sf  
(2025 estimate)

AVAILABILITY

Immediately

ALLOWANCE

Negotiable

TENANT AMENITY FLOOR

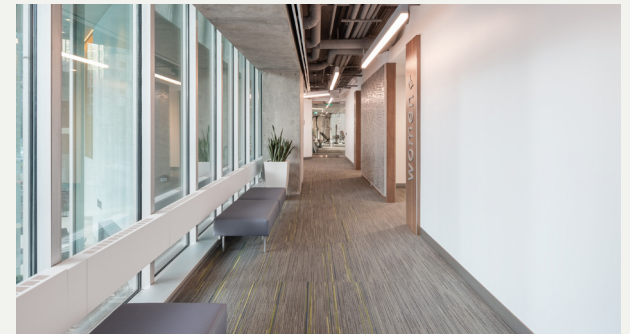
Brand new second floor common area available to all 1500 West Georgia Street tenants at no charge.



⬆ Boardroom



⬆ Workstations



⬆ Seating Area



⬆ Fitness Facilities



⬆ Cafeteria



⬆ Change Rooms



# Unit 450




AREA

6,108 SF

AVAILABILITY

Immediately

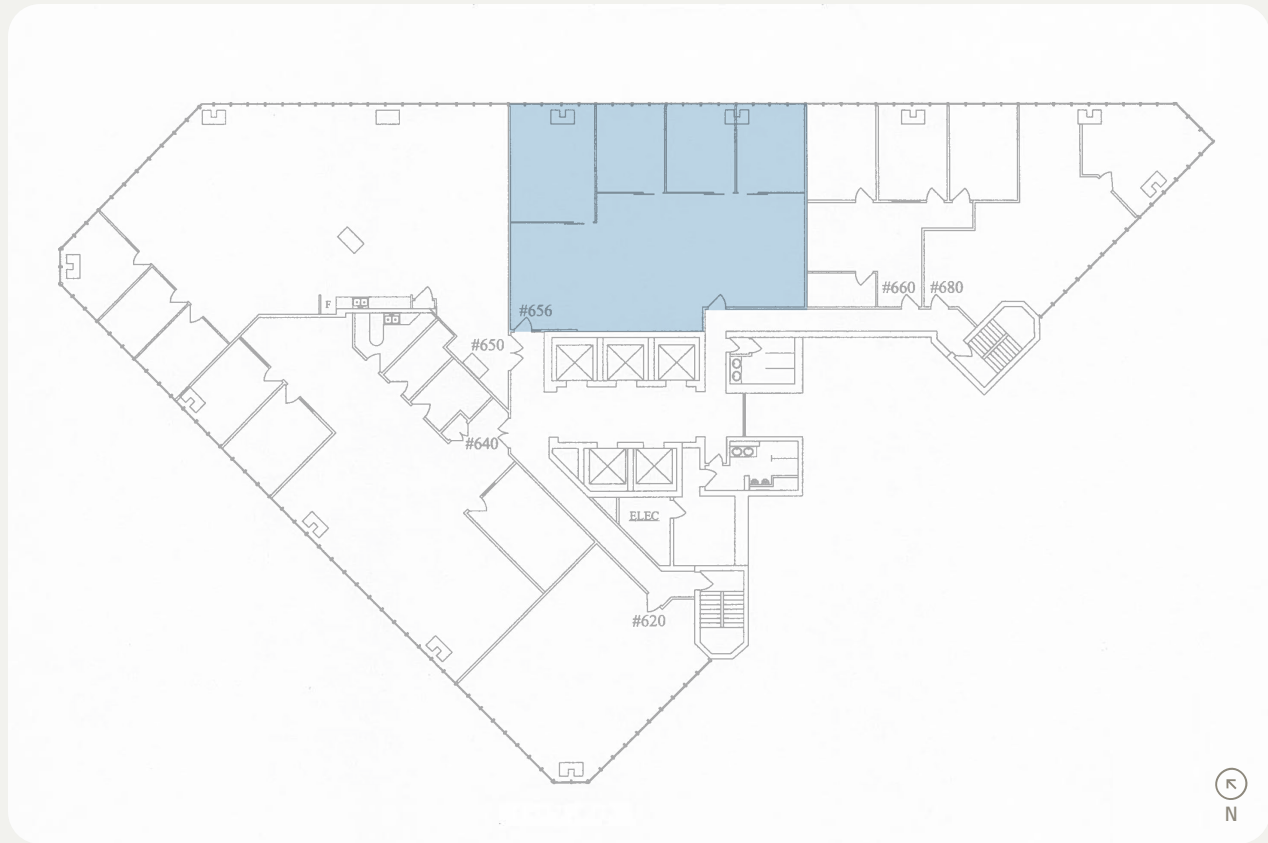


[View Virtual Tour](#) 

UNIT FEATURES

- » Shell Condition
- » Ability to Demise
- » Kitchenette Area
- » Lobby Presence

# Unit 658



AREA

2,142 SF

AVAILABILITY

Immediately

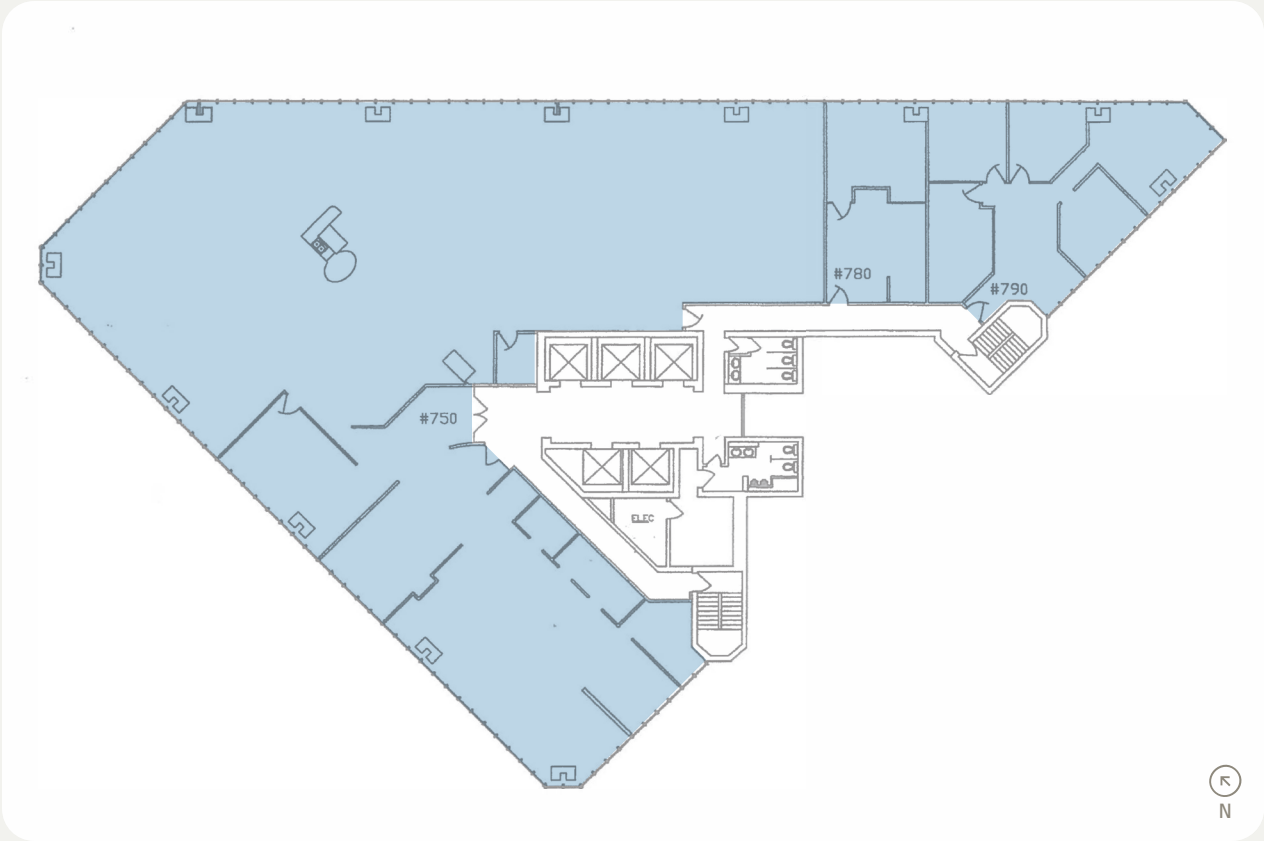


[View Virtual Tour](#)

UNIT FEATURES

- » Improved Space
- » 3 Private Offices
- » 1 Boardroom
- » Open Area
- » No Kitchen Area

# Unit 700



AREA

11,370 SF

AVAILABILITY

Immediately



[View Virtual Tour](#)

UNIT FEATURES

- » Full Floor Opportunity
- » Ability to Demise
- » Open Concept
- » 3 Kitchenettes

# Unit 800

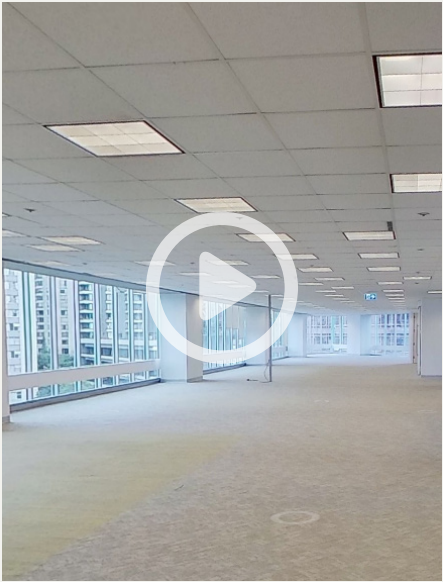


AREA

9,483 SF

AVAILABILITY

Immediately



[View Virtual Tour](#)

UNIT FEATURES

- » Mix of Open Area and Private Offices
- » Kitchen Area
- » Views of Stanley Park



# Unit 975



AREA

691 SF

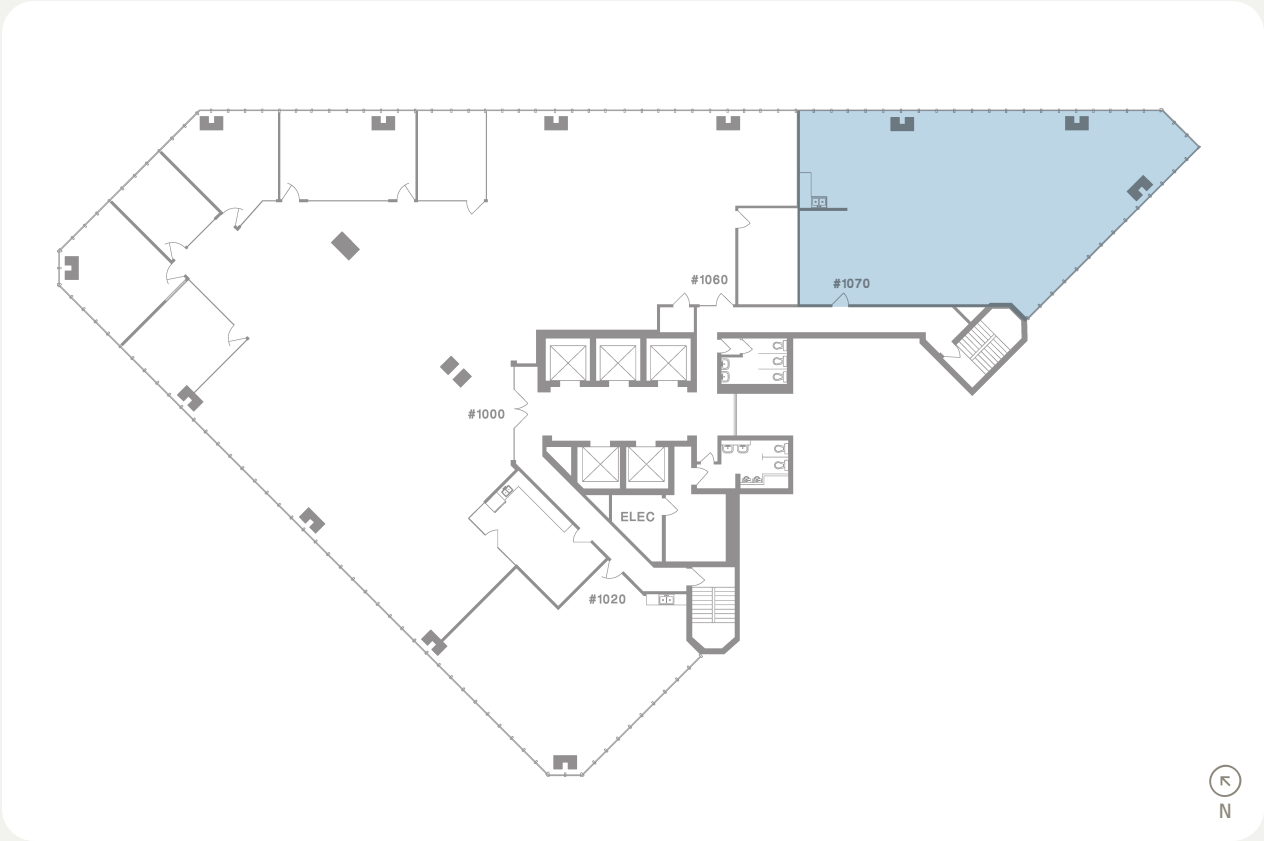
AVAILABILITY

Immediately

UNIT FEATURES

- » Open Area
- » Small Kitchenette

# Unit 1070



AREA

2,699 SF

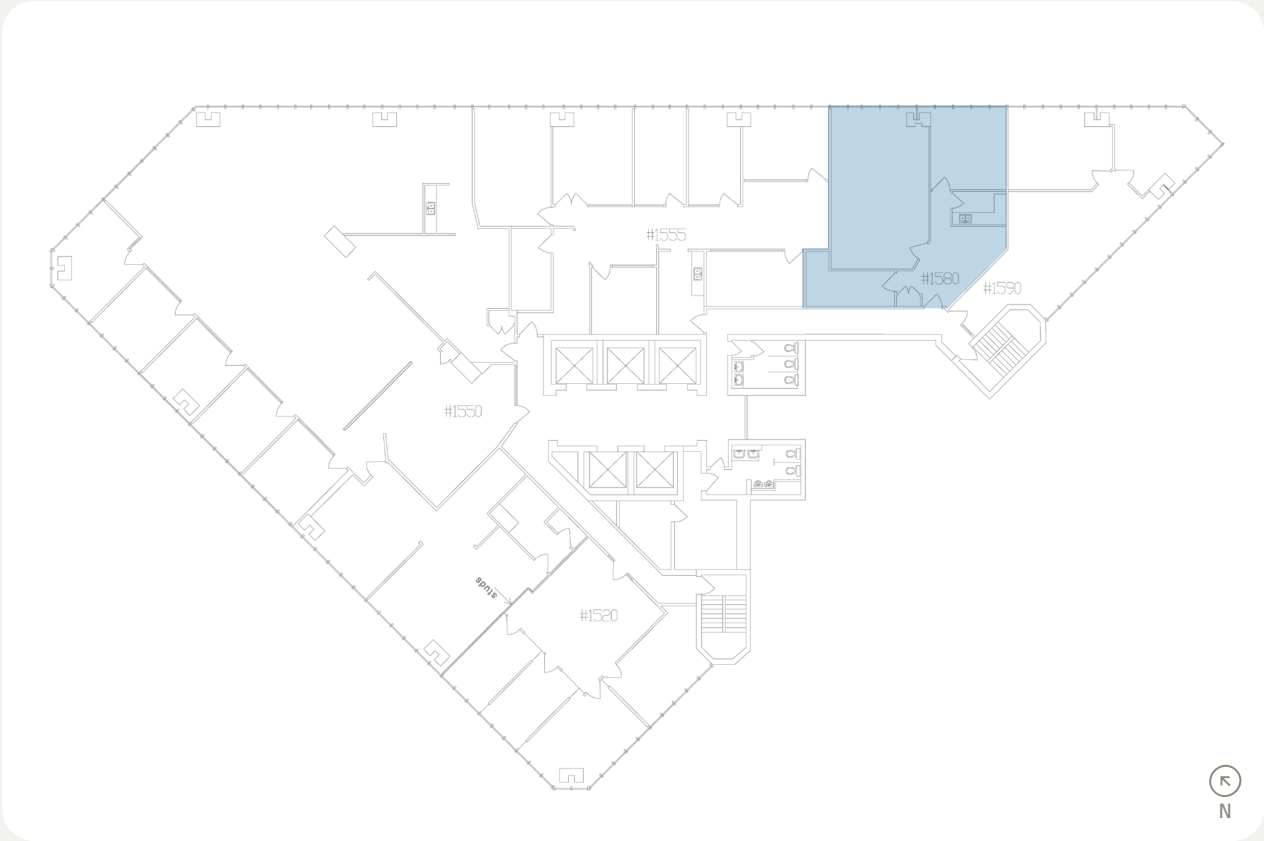
AVAILABILITY

Immediately

UNIT FEATURES

- » Beautifully Improved Space
- » Mix of Private Offices and Open Area
- » Kitchen Area

# Unit 1580



AREA

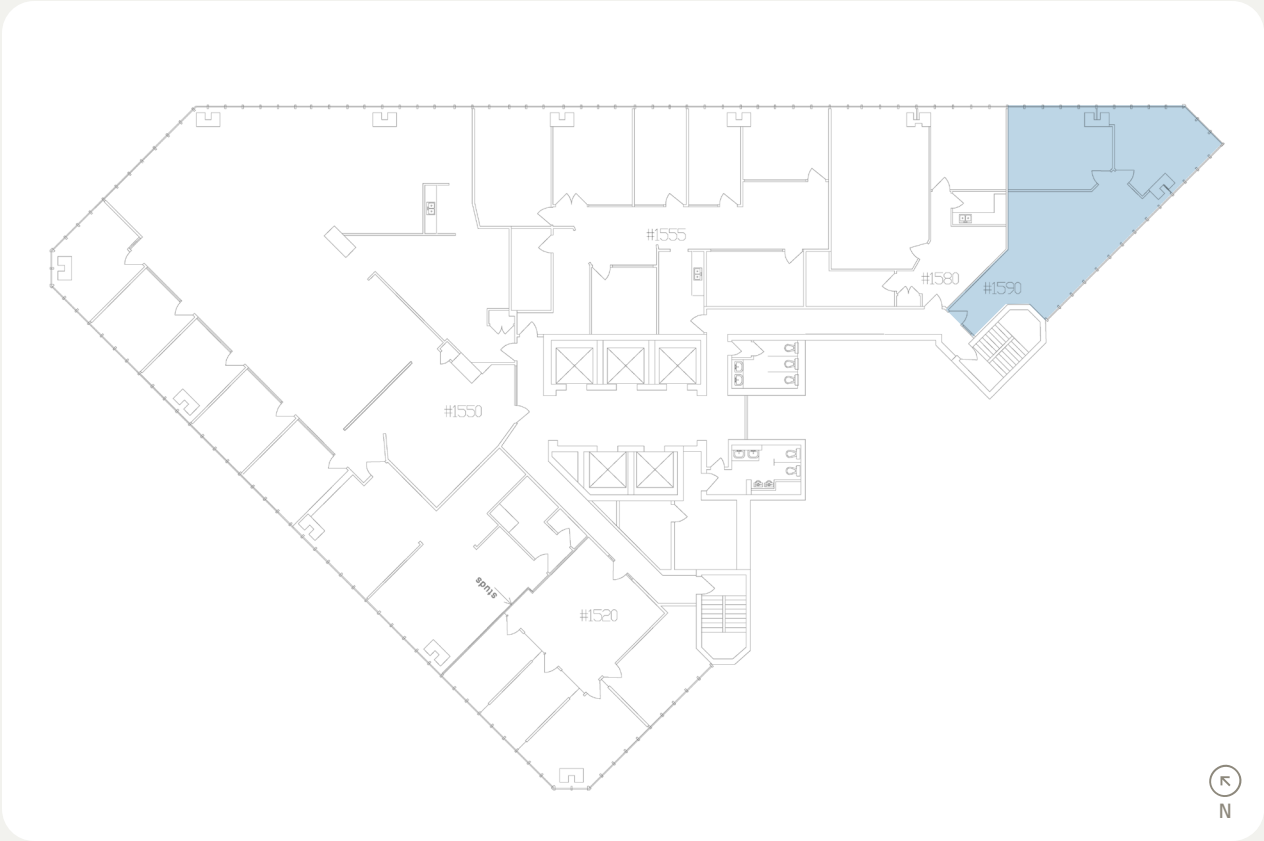
1,221 SF

AVAILABILITY

Immediately



# Unit 1590



AREA

1,102 SF

AVAILABILITY

Immediately

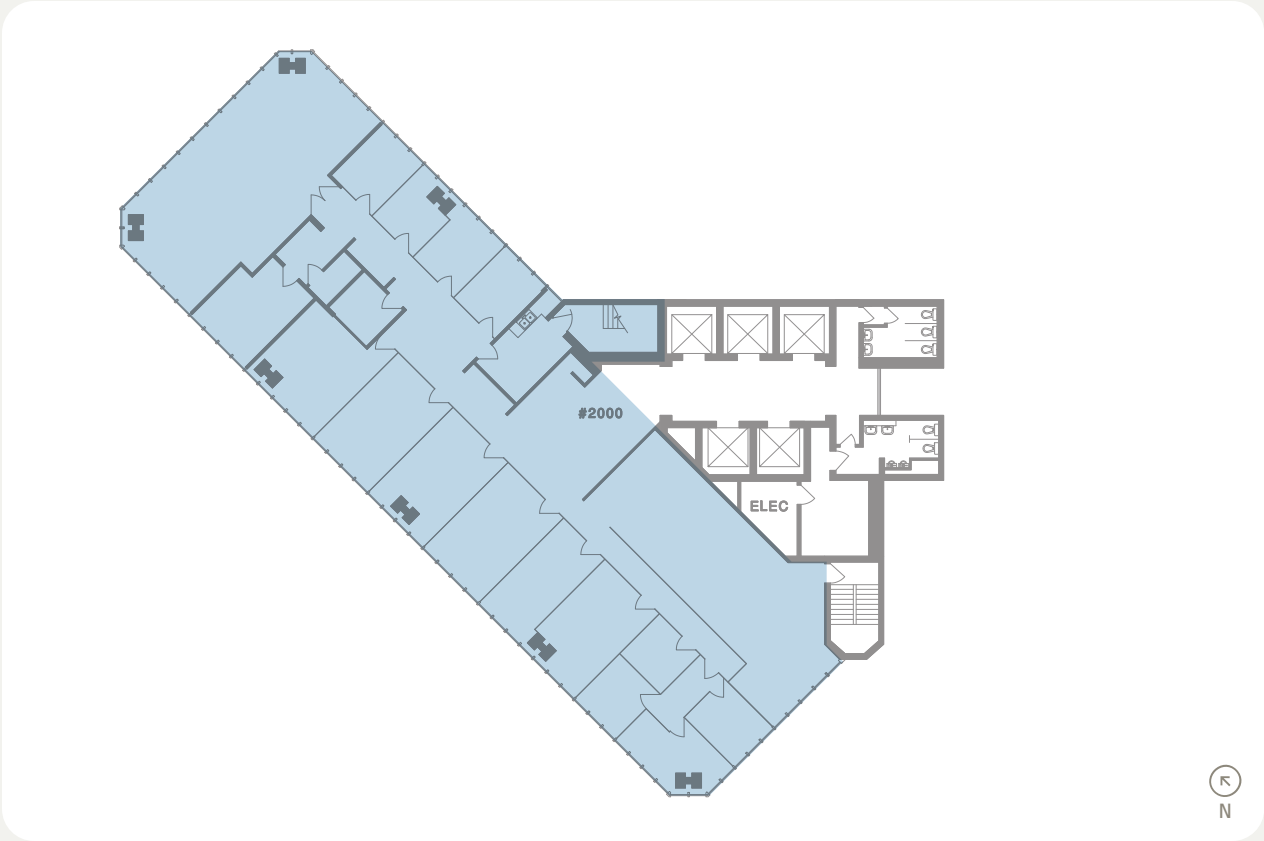


[View Virtual Tour](#)

UNIT FEATURES

- » 3 Private Offices
- » No Kitchen Area

# Unit 2000



AREA

6,043 SF

AVAILABILITY

Immediately

CONTACT

# Get in Touch

HEAD OFFICE

Bosa Properties  
1201-838 West Hastings St  
Vancouver, BC V6C 0A6

Office 604 416 0286

© bosaproperties.com

LEASING CONTACT

ALYCIA KAMER  
Director, Commercial Leasing  
604 558 8665  
akamer@bosaproperties.com

CALLY ZERING  
Leasing Manager, Commercial  
778 357 0175  
czering@bosaproperties.com

RACHEL SANGHA  
Leasing Coordinator, Commercial  
604 416 0286  
rsangha@bosaproperties.com

