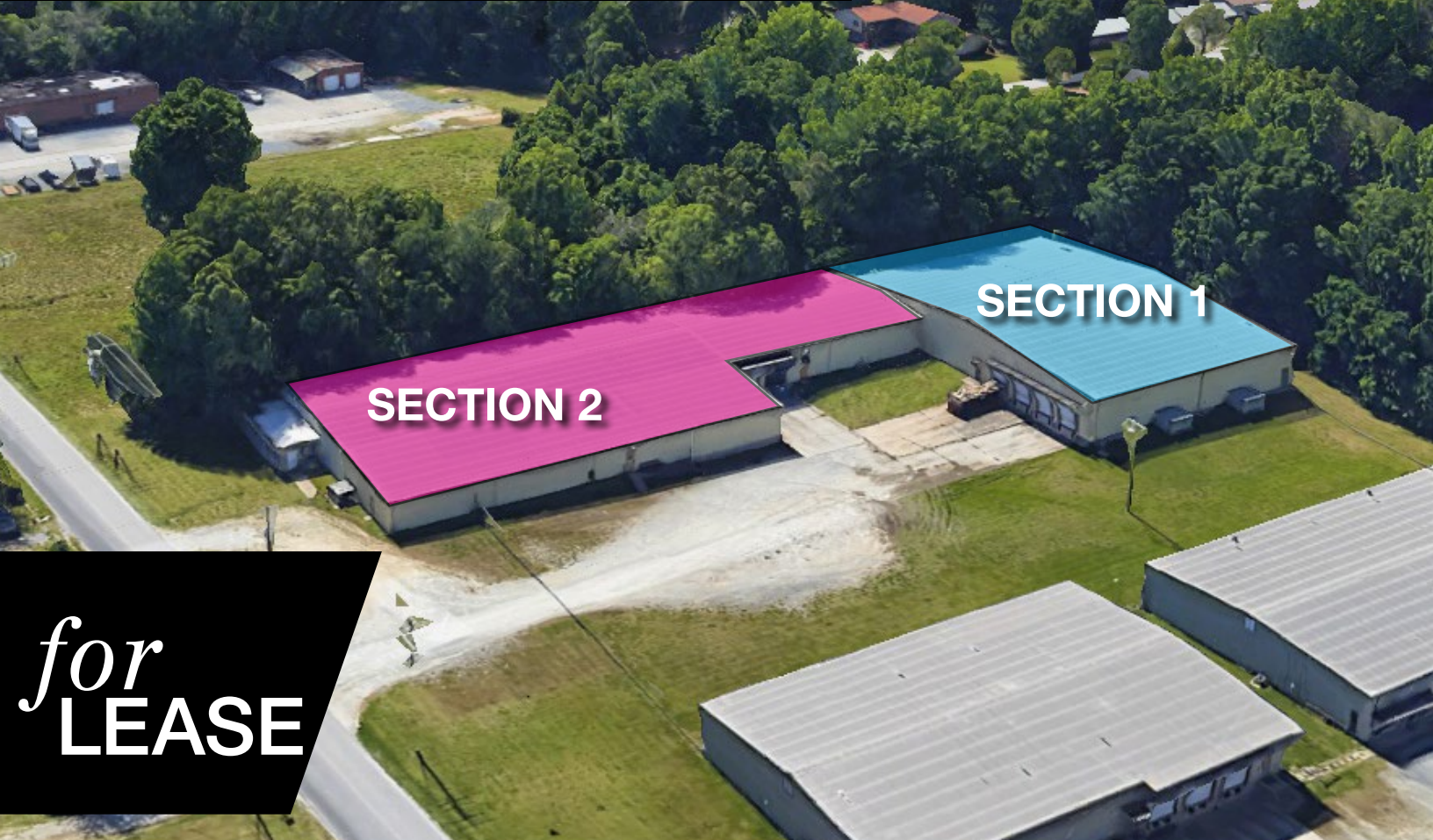


701 EDEN TERRACE ARCHDALE, NC



for
LEASE

- Total of ±34,340 SF on 2.5 Acres
- New LED Lighting
- Fence Lot Approx 0.75 Acres
- Power: 1200 AMPS
- Zoned M-2
- Option for Additional 3 Acres of Outdoor Storage

SECTION 2:

±14,000 SF

21' Ceilings

Optional Air Conditioning

4 Dock Height Doors

One Restroom

SECTION 1:

±20,340 SF

13' Ceilings

2 Dock Height Doors

Small Office Area and Restroom

LEASE RATE: \$4.95 - 6.25/SF NNN

NAI Piedmont Triad

Commercial Real Estate Services, World Wide

BEN STURGILL

BROKER

(O) 336.553.3229

(C) 336.848.3046

bsturgill@naipt.com

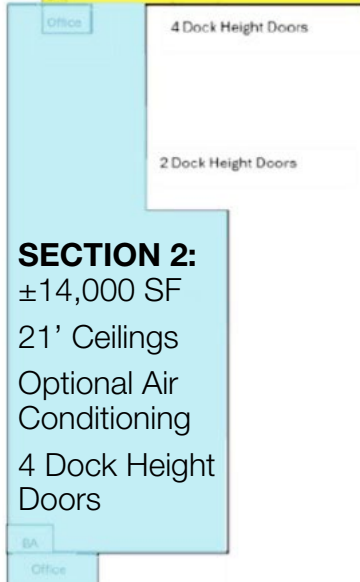
348 N. Elm Street • Greensboro, NC 27401 • naipt.com

SECTION 1:

±20,340 SF

13' Ceilings

2 Dock Height Doors



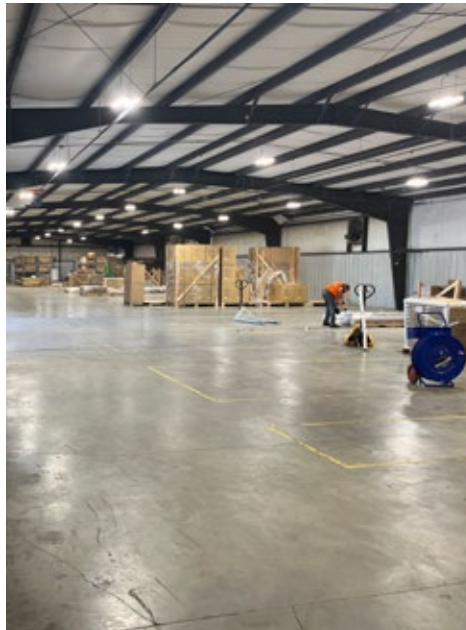
SECTION 2:

±14,000 SF

21' Ceilings

Optional Air Conditioning

4 Dock Height Doors



This material may contain content generated with AI assistance and publicly sourced data. NAI Piedmont Triad makes every effort to verify the information but makes no warranties or representations regarding the accuracy, completeness, or reliability of the information. Independent verification of all details is strongly encouraged. Prices, terms, and availability are subject to change without prior notice.

BEN STURGILL

BROKER

(C) 336.553.3229

(C) 336.848.3046

bsturgill@naipt.com