



Office Space for Lease

**206 NW MOCK AVENUE
BLUE SPRINGS, MISSOURI**

Property Highlights

- 1,919 sf available
- Located within Saint Mary's Medical Center campus
- Just off 7 Hwy. and minutes from I-70
- Minutes from retail amenities and restaurants
- Ample onsite parking
- Lease rate negotiable

For information, please contact:

Nick Suarez, SIOR, CCIM

Executive Managing Director, Principal

t 816-512-1012

nsuarez@nzimmer.com

Trey DeRousse

Associate Director

t 816-268-4236

tderousse@nzimmer.com

1220 Washington Street, Suite 300
Kansas City, MO 64105

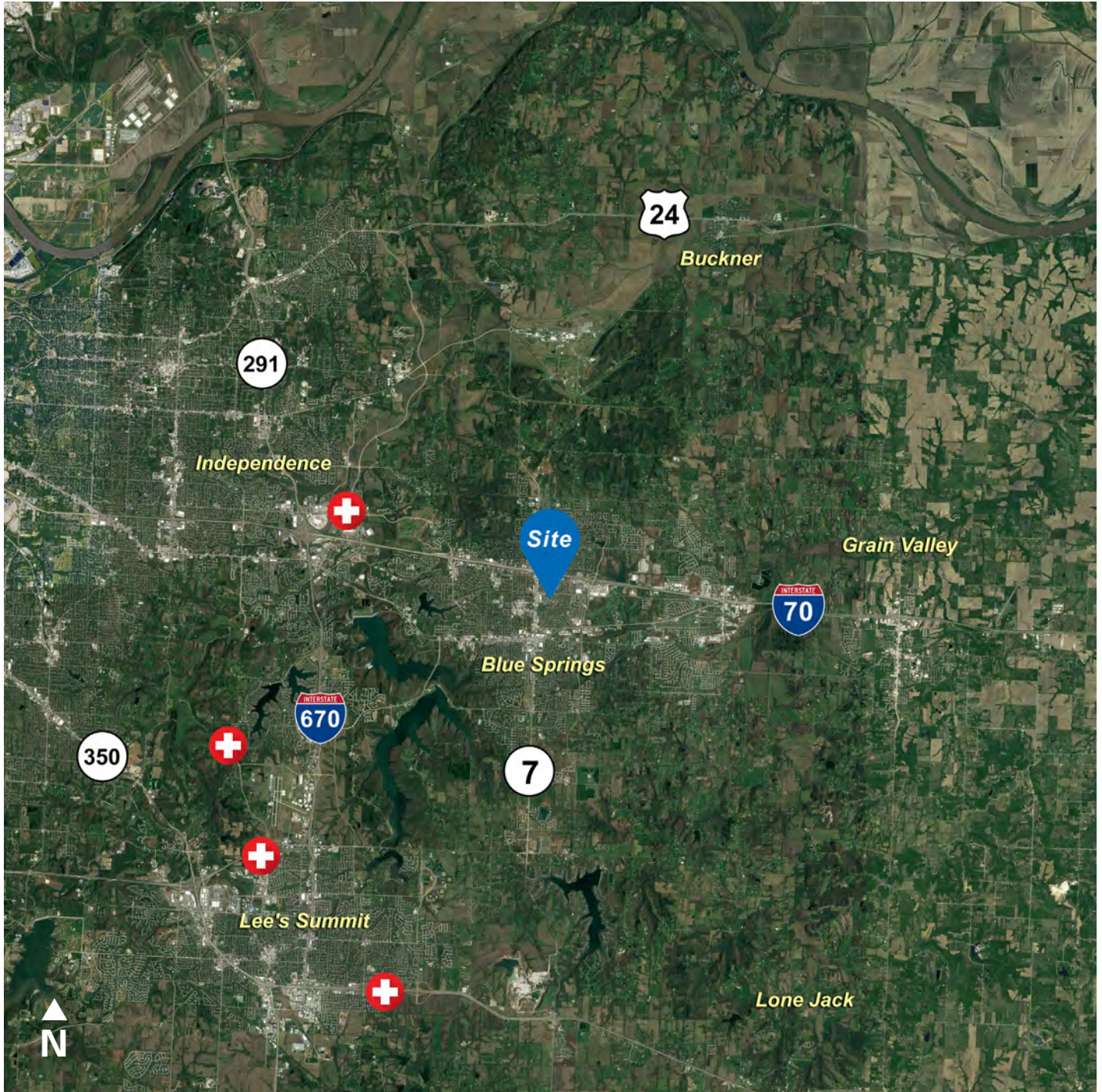
nmrkzimmer.com



NEWMARK
ZIMMER

The information contained herein has been obtained from sources deemed reliable but has not been verified and no guarantee, warranty or representation, either express or implied, is made with respect to such information. Terms of sale or lease and availability are subject to change or withdrawal without notice.

206 NW MOCK AVENUE, BLUE SPRINGS, MISSOURI

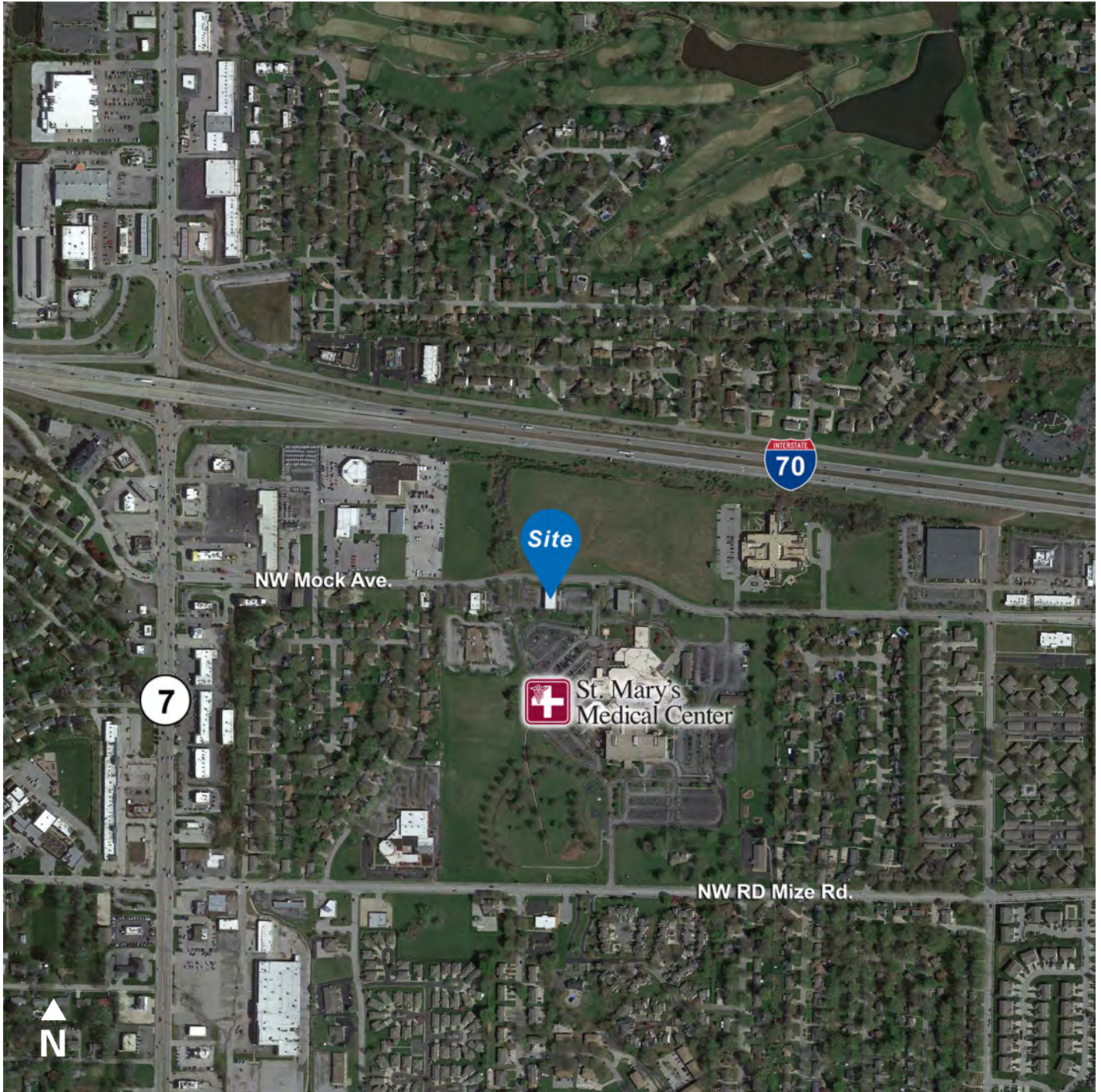


CONTACT

Nick Suarez, SIOR, CCIM
Executive Managing Director, Principal
t 816-512-1012
nsuarez@nzimmer.com
nmrkzimmer.com

Trey DeRousse
Associate Director
t 816-268-4236
tderousse@nzimmer.com

206 NW MOCK AVENUE, BLUE SPRINGS, MISSOURI



CONTACT

Nick Suarez, SIOR, CCIM
Executive Managing Director, Principal
t 816-512-1012
nsuarez@nzimmer.com
nmrkzimmer.com

Trey DeRousse
Associate Director
t 816-268-4236
tderousse@nzimmer.com

206 NW MOCK AVENUE, BLUE SPRINGS, MISSOURI

Floor Plan



CONTACT

Nick Suarez, SIOR, CCIM

Executive Managing Director, Principal

t 816-512-1012

nsuarez@nzimmer.com

nmrkzimmer.com

Trey DeRousse

Associate Director

t 816-268-4236

tderousse@nzimmer.com

NEWMARK
ZIMMER