

FOR LEASE

2511 N HEIDEKE ST, SEGUIN, TX 78155



24,000 SF Industrial Facility on 3.0 Acres

ABOUT THE PROPERTY:

Positioned along the high-growth I-10 corridor between San Antonio and Houston, 2511 N Heideke Street offers a rare combination of building functionality and site versatility. This 24,000 SF industrial facility on 3.0 acres is built for operators who demand serious infrastructure — featuring heavy power, 20' clear height, grade-level loading, 1,500 SF of finished office space, and expansive outside storage. Built for efficiency and ready for immediate use, this property is ideally suited for manufacturing, distribution, or yard-intensive operations.

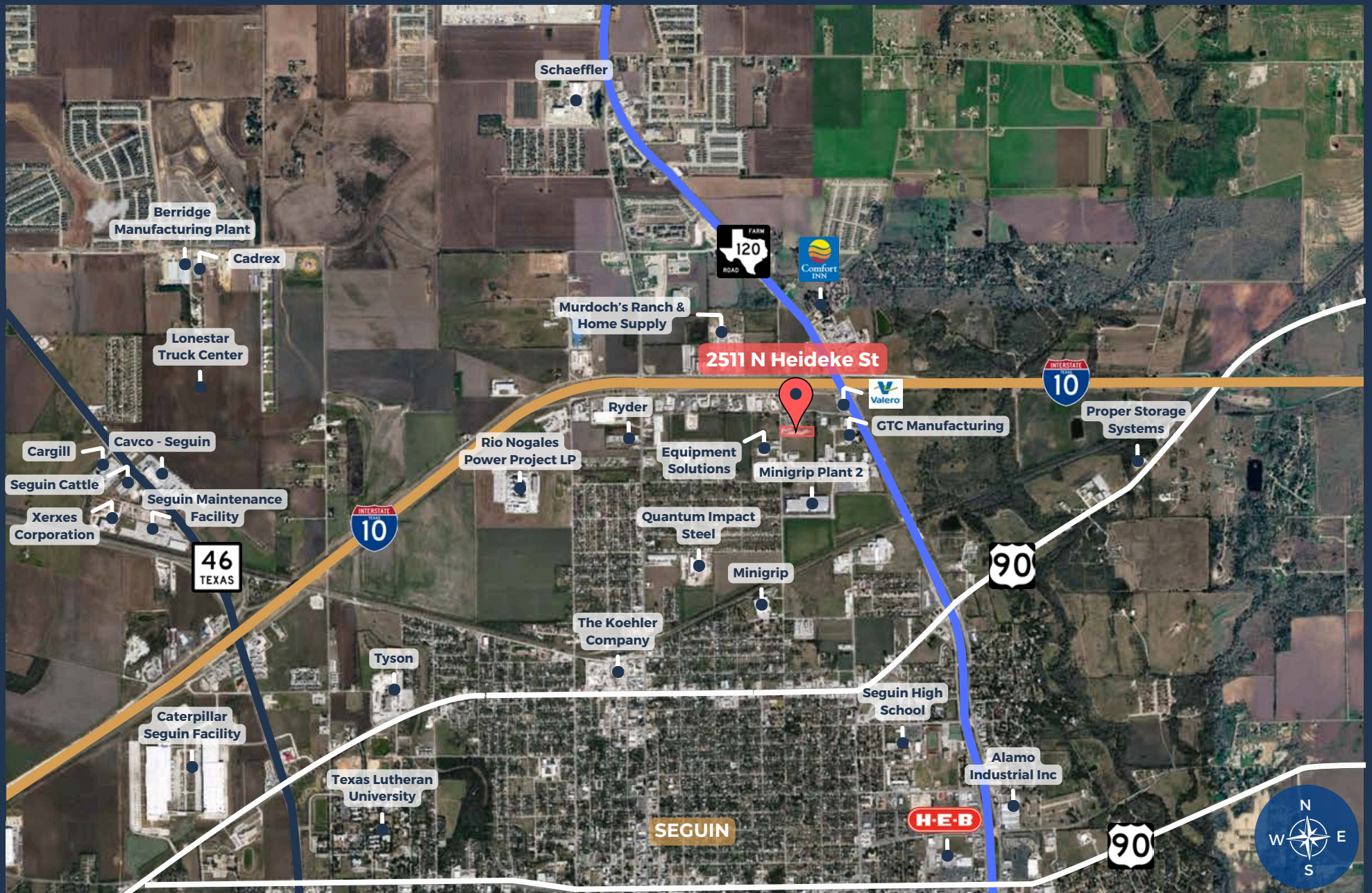
FEATURES:

- 24,000 SF warehouse (incl. 1,500 SF office)
- 3.0-acre site
- Heavy Power
- 20' clear height
- Dock-high and grade-level loading
- Quick access to I-10 corridor between San Antonio and Houston

PROPERTY HIGHLIGHTS



AREA OVERVIEW





CONTACT
OUR TEAM



Cullen Mills
Co-Founder & President
cmills@llanorealty.com
(210) 926-5812



Colin McLellan
Partner
cmclellan@llanorealty.com
(210) 908-6345