

9207/9209
RESEARCH DR
IRVINE, CA 92618

TWO CONDO PORTFOLIO

FOR SALE
3,673 SF R&D CONDO

NAI Capital
COMMERCIAL REAL ESTATE SERVICES, WORLDWIDE



9207/9209 RESEARCH DR IRVINE, CA 92618

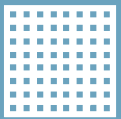
Property Description

Discover unparalleled flexibility and a prime location with this stunning R&D condo situated on in the heart of the Irvine Spectrum. This modern space is designed to meet the diverse needs of your business, offering a perfect blend of functionality and style. This property features an exceptional opportunity for businesses seeking a dynamic workspace in one of Irvine's most sought-after locations. The stylish interior boasts high end improvements such exposed ceilings, full kitchen, executive sized offices, conference room, and a light and bright open working area for maximum creativity and collaboration! Do not miss out on the chance to elevate your business in the vibrant Irvine Spectrum community. Contact us today to schedule a tour!

For more information:

John Manion

Executive Vice President
jmanion@naicapital.com
949 207 6424
Cal DRE License #01247695



3,673 SF



**Corner Unit with
Natural Light**



Exposed Ceilings



**Three Executive
Sized Private
Offices**



**Private
Restrooms**



**Open Working
Area**



Full Kitchen



Large Storage Room

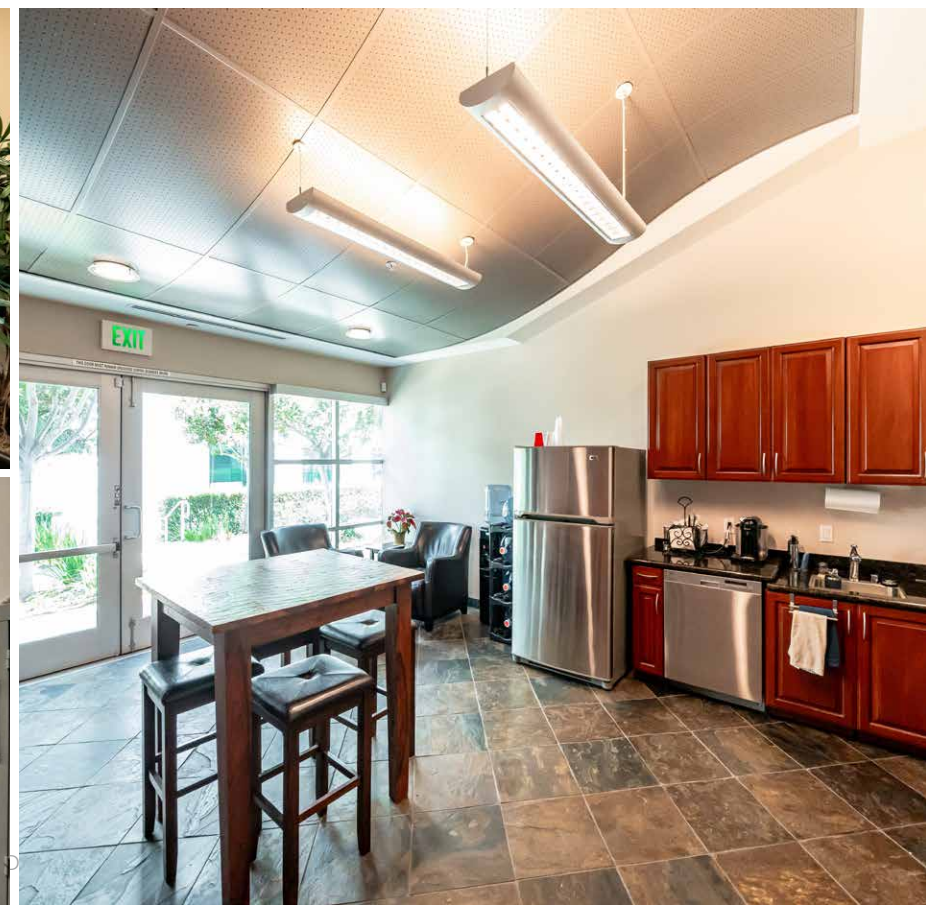


Conference Room

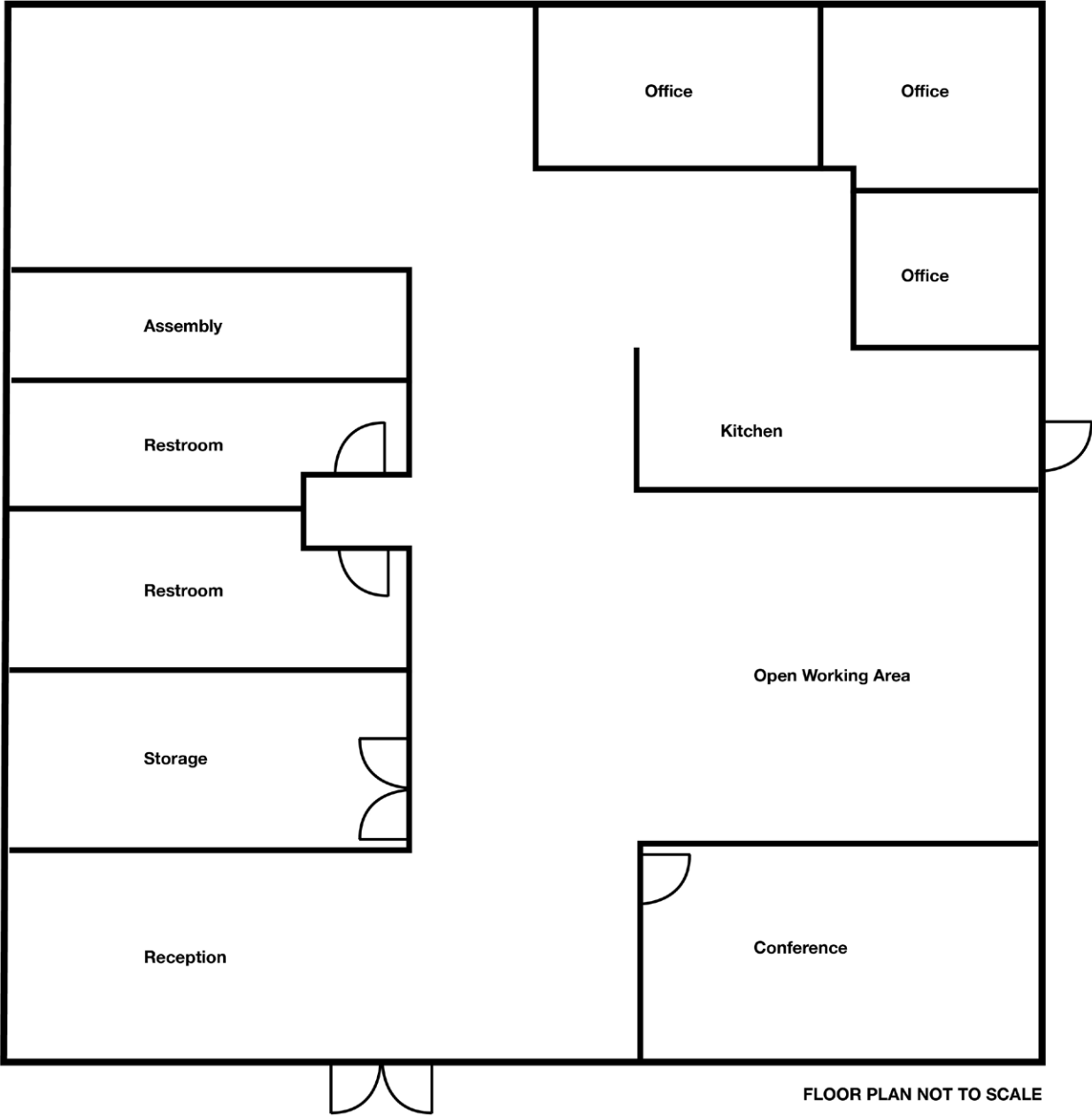


**Easy Access
to 405/5/133
Freeways**

Property Photos



Floor Plan



FLOOR PLAN NOT TO SCALE



9207-9209
RESEARCH DR
IRVINE CA

JOHN WAYNE AIRPORT
ORANGE COUNTY
9 MILES FROM SITE

9207/9209
RESEARCH DR
IRVINE, CA 92618

TWO CONDO PORTFOLIO

For more information
please contact:

John Manion

Executive Vice President

jmanion@naicapital.com

949 207 6424

Cal DRE License #01247695

FOR SALE
3,673 SF R&D CONDO

NAICapital
COMMERCIAL REAL ESTATE SERVICES, WORLDWIDE