



# EL DORADO HILLS FLEX CONDO FOR SALE

## 4972 Robert J. Mathews Pkwy., Unit 100



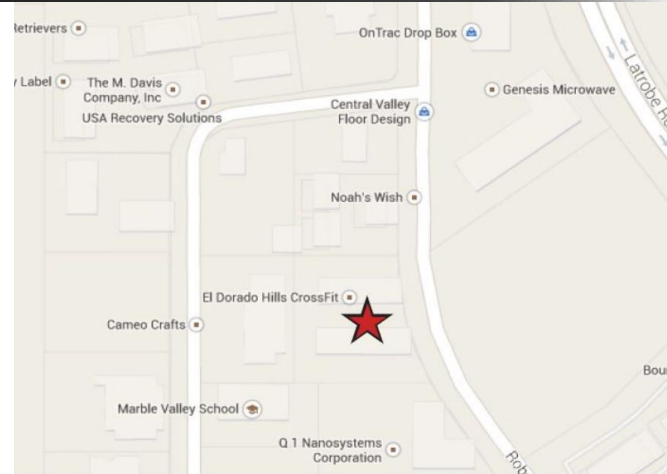
### PROPERTY HIGHLIGHTS

- Front Unit Condo With Office / Lab / Warehouse For Sale +/- 4,372 SF
- Condo-Plan in place with REA, pride of ownership well maintained property;
- Desirable central El Dorado Hills location, immediate access to Latrobe, Highway 50 & retail services at Town Center;
- Tilt up concrete construction, good clear height with roll up door;
- Abundant parking, 300 AMP power service (3 Phase);
- Comcast Fiber, Comcast Cable and AT&T services available in building;
- Contiguous Units #120 - #160 also available for sale;
- Price \$1,246,020.

### [Drone Footage Link](#)

Contact listing broker with questions or to arrange a tour, please do not disturb tenants.

**DAN WATSON**  
 Broker Associate  
 Cell: 831.227.7098  
[dan.watson@kw.com](mailto:dan.watson@kw.com)  
 DRE License #01786748

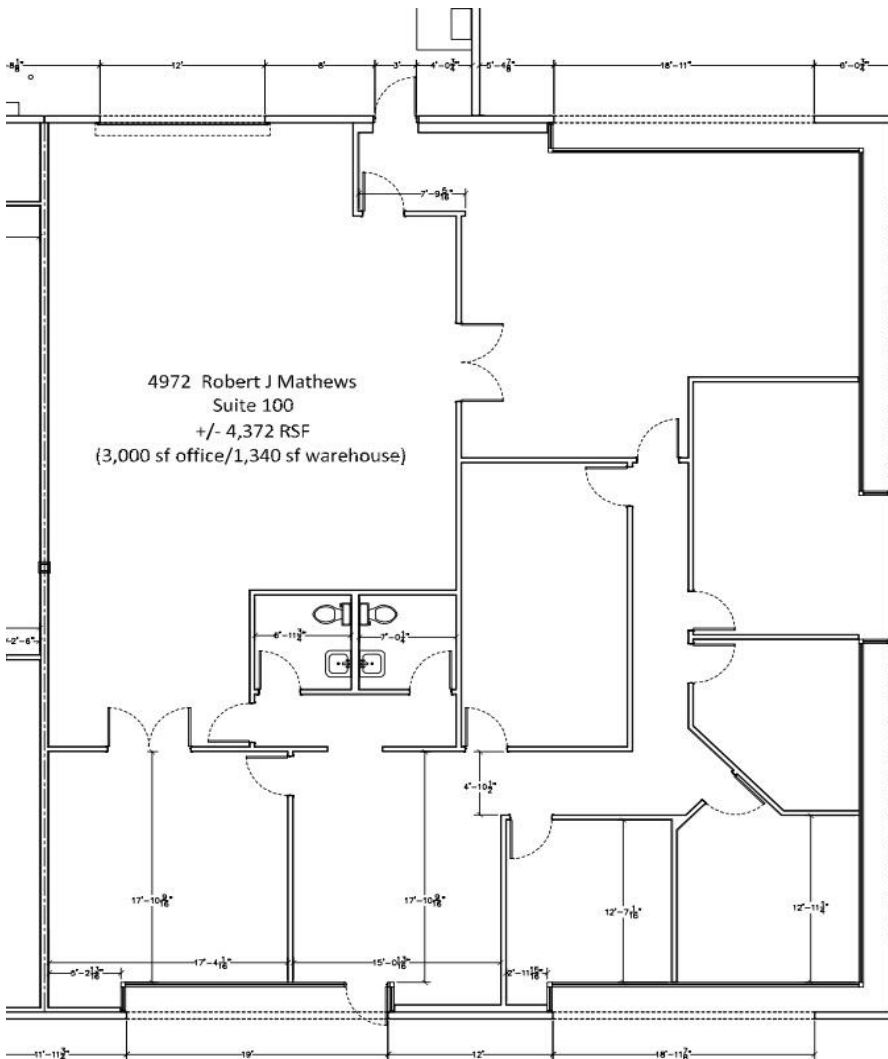


KW Commercial | 548 Gibson Drive, Ste 200 | Roseville, CA 95661 | 916.788.8800 | License #1272617

The information contained herein was obtained from third parties, and it has not been independently verified by the real estate brokers. Buyers/tenants should have the experts of their choice inspect the property and information. Real estate brokers are not qualified to act as or select experts with respect to legal, tax, environmental, building construction, soils-drainage or other such matters.



4972 Robert J. Mathews Pkwy., #100  
El Dorado Hills, CA 95762



\*Square Footage reduced by 128 SF for Power Room and prorated to all units.  
\*\*Condo unit square footages vary and may contain common area proration.

For more information,  
please contact:

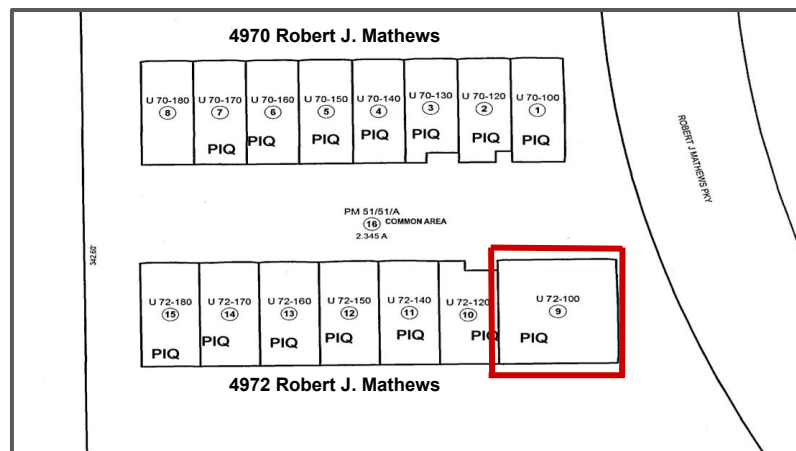
**DAN WATSON**  
Cell: 831.227.7098  
[dan.watson@kw.com](mailto:dan.watson@kw.com)  
DRE License #01786748

KW Commercial | 548 Gibson Drive, Ste 200 | Roseville, CA 95661 | 916.788.8800 | License #1272617

The information contained herein was obtained from third parties, and it has not been independently verified by the real estate brokers. Buyers/tenants should have the experts of their choice inspect the property and information. Real estate brokers are not qualified to act as or select experts with respect to legal, tax, environmental, building construction, soils-drainage or other such matters.

# PROPERTY PHOTOS

4972 Robert J. Mathews Pkwy., #100  
El Dorado Hills, CA



For more information or to arrange a tour,  
contact the listing agent:

**DAN WATSON**  
Broker Associate  
Cell: 831.227.7098  
[dan.watson@kw.com](mailto:dan.watson@kw.com)  
DRE License #01786748

KW Commercial | 548 Gibson Drive, Ste 200 | Roseville, CA 95661 | 916.788.8800 | License #1272617

The information contained herein was obtained from third parties, and it has not been independently verified by the real estate brokers. Buyers/tenants should have the experts of their choice inspect the property and information. Real estate brokers are not qualified to act as or select experts with respect to legal, tax, environmental, building construction, soils-drainage or other such matters.