



FOR LEASE

1100 Alma St

Suite 101, Menlo Park
1413 sq. ft. Office Building



EUGENIA SERAIA

650.847.2041
eseraia@ventanaps.com
DRE# 02022599

JOE MARTIGNETTI

650.847.2000
jmartignetti@ventanaps.com
DRE# 01116935

The information contained herein has been given to us by the owner of the property or other sources we deem reliable. We have no reason to doubt its accuracy, but we do not guarantee it. All information should be verified prior to purchase or lease. No warranty or representation, expressed or implied, is made as to the accuracy of the information contained herein.

1100 Alma St

PROPERTY HIGHLIGHTS

1413 SQ FT Office Space

Available Now

Corner Space with Window Line

First Floor Office Unit

Conference Room and Private Offices

New Window Treatments, Paint and Flooring

Easily Accessible from Highway 101, 280

and One Block from CalTrain

Walkable to Downtown Menlo Park

In-Person Tour Available



EUGENIA SERAIA

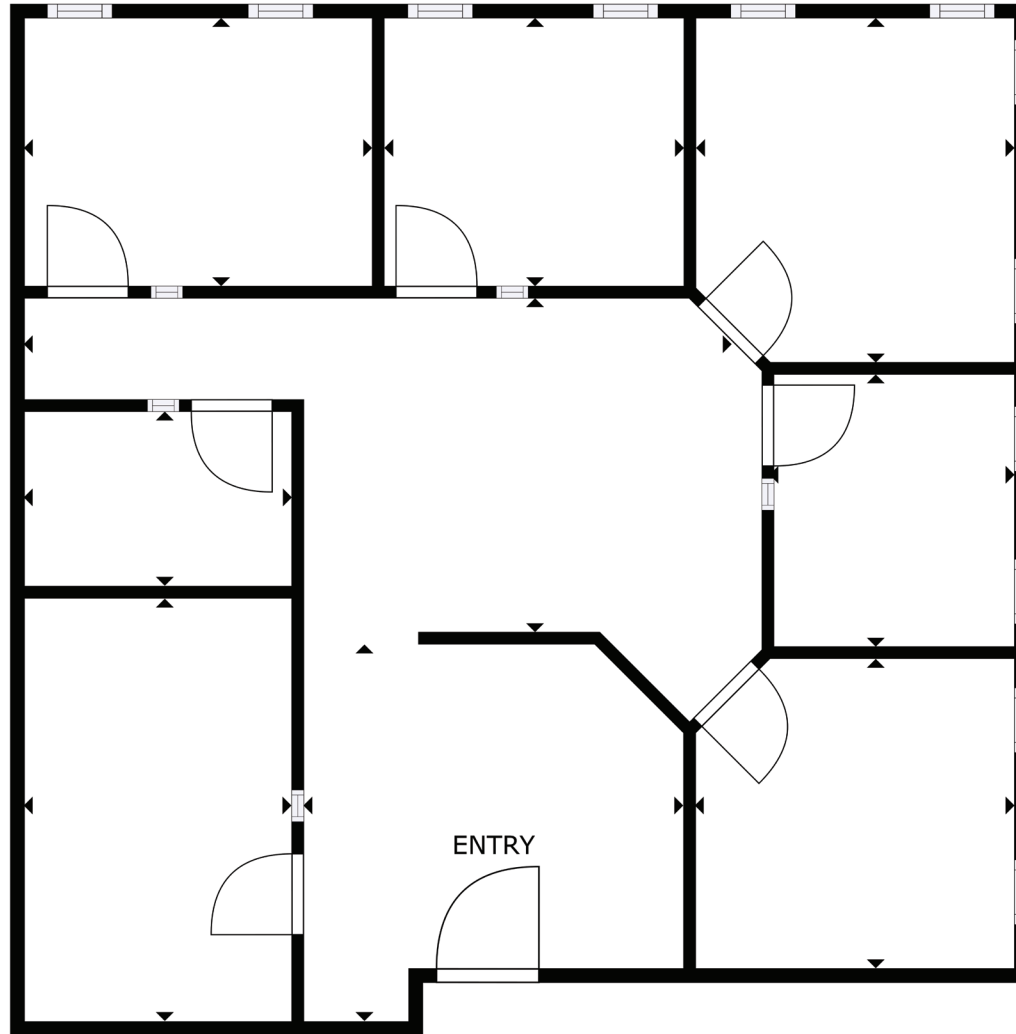
650.847.2041
eseraia@ventanaps.com
DRE# 02022599

JOE MARTIGNETTI

650.847.2000
jmartignetti@ventanaps.com
DRE# 01116935

The information contained herein has been given to us by the owner of the property or other sources we deem reliable. We have no reason to doubt its accuracy, but we do not guarantee it. All information should be verified prior to purchase or lease. No warranty or representation, expressed or implied, is made as to the accuracy of the information contained herein.

FLOOR PLAN



SIZES AND DIMENSIONS ARE APPROXIMATE, ACTUAL MAY VARY.



EUGENIA SERAIA

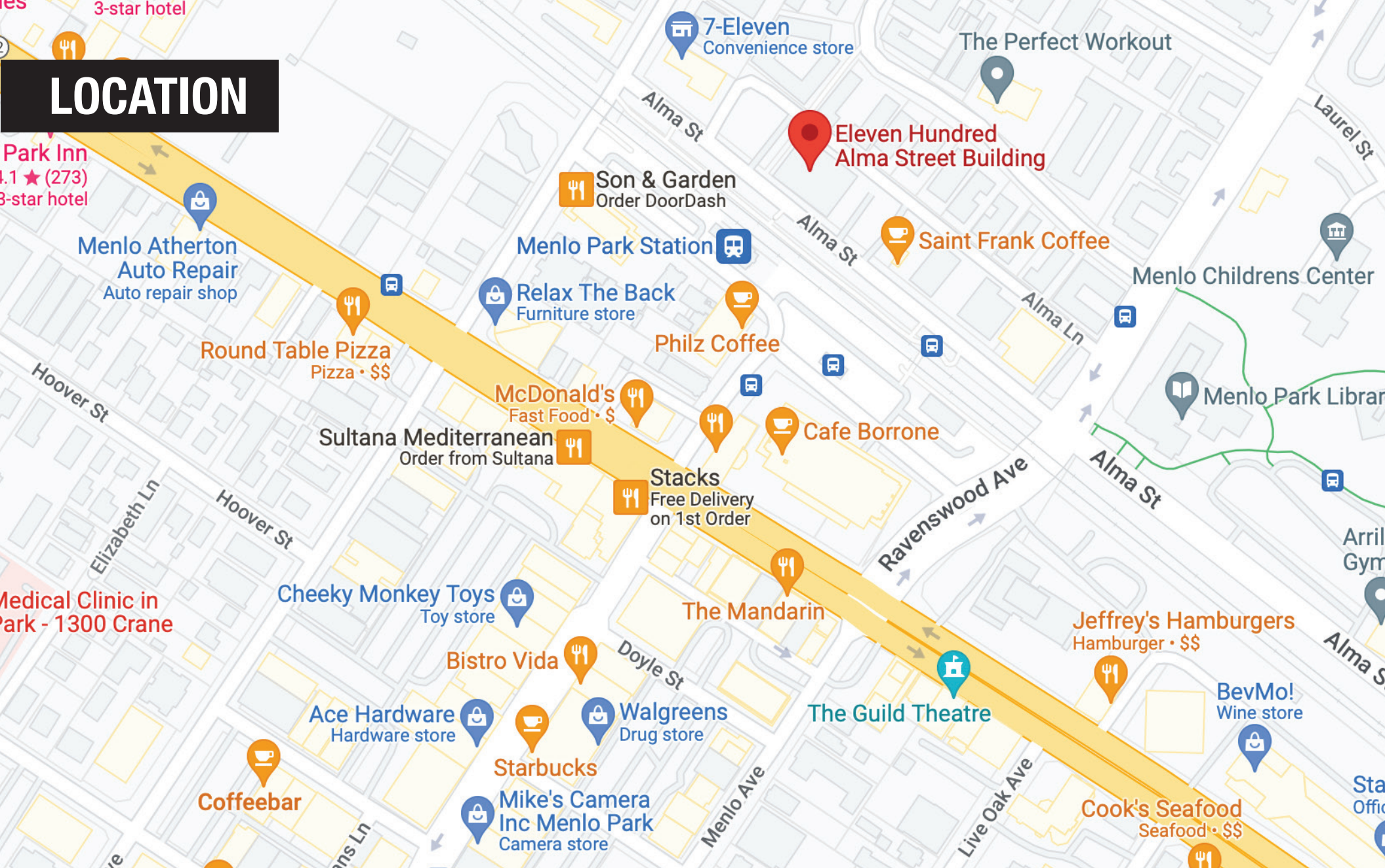
650.847.2041
eseraia@ventanaps.com
DRE# 02022599

JOE MARTIGNETTI

650.847.2000
jmartignetti@ventanaps.com
DRE# 01116935

The information contained herein has been given to us by the owner of the property or other sources we deem reliable. We have no reason to doubt its accuracy, but we do not guarantee it. All information should be verified prior to purchase or lease. No warranty or representation, expressed or implied, is made as to the accuracy of the information contained herein.

LOCATION



EUGENIA SERAIA

650.847.2041
eseraia@ventanaps.com
DRE# 02022599

JOE MARTIGNETTI

650.847.2000
jmartignetti@ventanaps.com
DRE# 01116935

The information contained herein has been given to us by the owner of the property or other sources we deem reliable. We have no reason to doubt its accuracy, but we do not guarantee it. All information should be verified prior to purchase or lease. No warranty or representation, expressed or implied, is made as to the accuracy of the information contained herein.