



OFFICE/MEDICAL CONDO SUBLEASE

6900 Turkey Lake Road, Orlando, FL 32819

Contact: Sherica Segre, MSRE
Sales & Leasing Associate

E: SSegre@FCPG.com
P: 407.872.0177 ext. 143

Contact: Jeré Matheny
Vice President of Brokerage Services

E: JMatheny@FCPG.com
P: 407.872.0177 ext. 132

For Lease: \$32.00 / RSF, Full Service

Suite 2-1: ± 2,831 RSF

Suite 2-2: ± 510 RSF

(RSF includes an additional 15% core factor)

8 / 1,000 Parking Ratio



**DAYTIME POPULATION
(WITHIN 15 MINS)**
276,762

Suite 2-1 is a second-floor 2,831 SF office condo featuring 13 private offices, phone booth-style private work areas, open collaborative space, break area, and private balcony overlooking Universal's Volcano Bay

Tasteful finishes, commercial-grade flooring, and functional layout ideal for professional users. Ideally situated for a variety of administrative, professional, or medical uses

Excellent Dr. Phillips location with premier access to one of Orlando's most dynamic business and entertainment corridors

Just minutes from I-4, Sand Lake Road, International Drive, the Convention Center, and Restaurant Row

Surrounded by world-class dining, major attractions, and executive housing, the property offers unparalleled convenience for professionals seeking a prestigious and easily accessible address



**5 MINS
(1 Mile)**



**6 MINS
(3.8 Miles)**

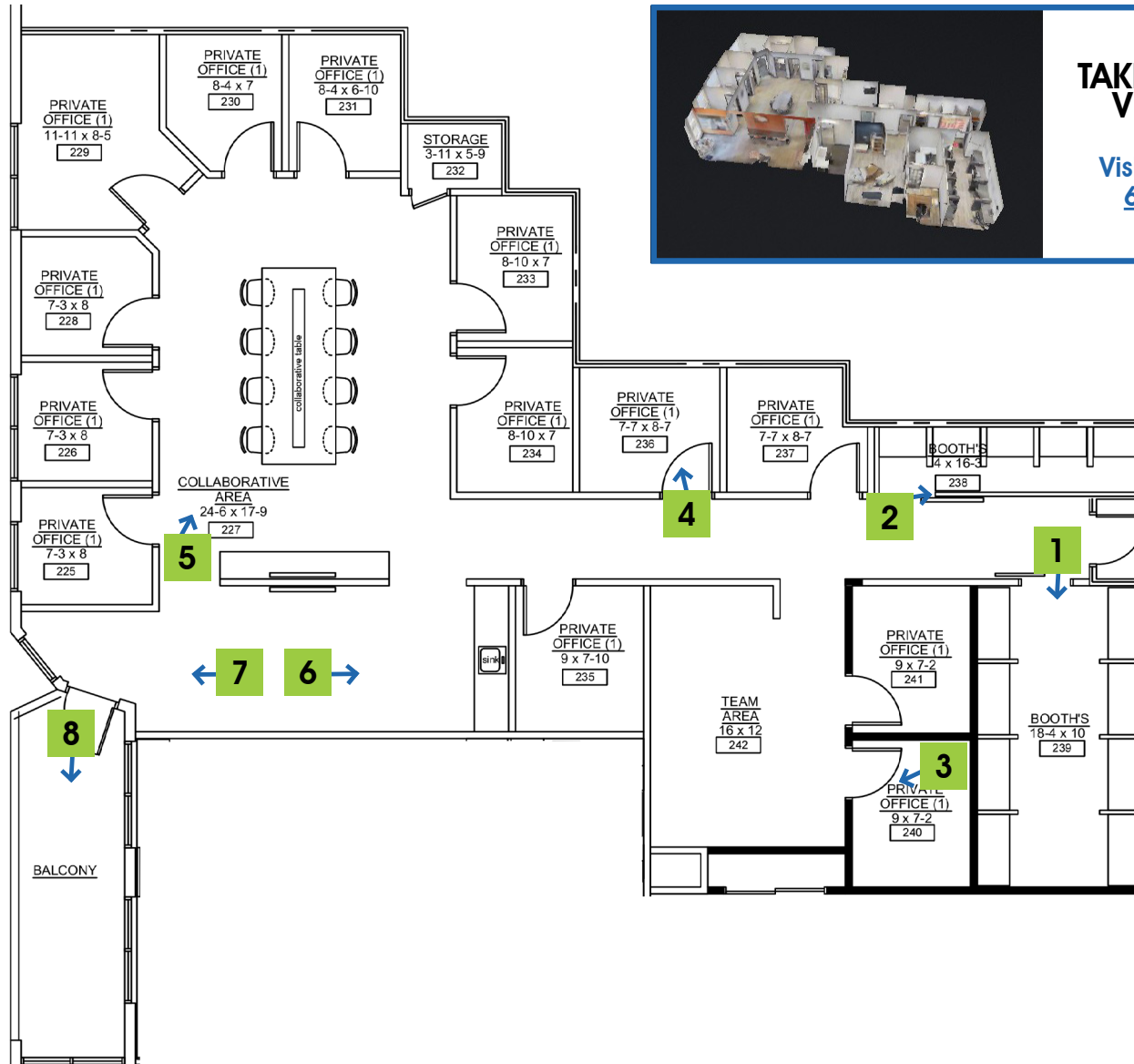


**16 MINS
(10.7 Miles)**

615 E. Colonial Dr., Orlando, FL 32803 Phone: 407.872.0209 Fax: 407.426.8542

Information furnished regarding the subject property is believed to be accurate, but no guarantee or representation is made. References to square footage are approximate. This offering is subject to errors, omissions, prior sale or lease or withdrawal without notice. ©2026 First Capital Property Group, Licensed Real Estate Brokers & Managers.

SUITE 2-1: ± 2,831 RSF




**TAKE A VIRTUAL TOUR
VIA MATTERPORT**

Visit: [https://fcpq.com/
6900_Turkey_Lake/](https://fcpq.com/6900_Turkey_Lake/)

■ 615 E. Colonial Dr., Orlando, FL 32803 ■ Phone: 407.872.0209 ■ Fax: 407.426.8542 ■

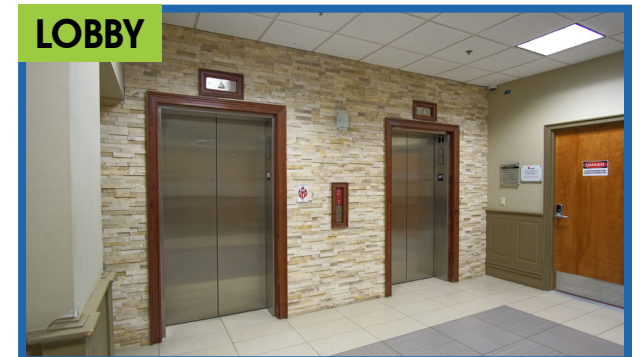
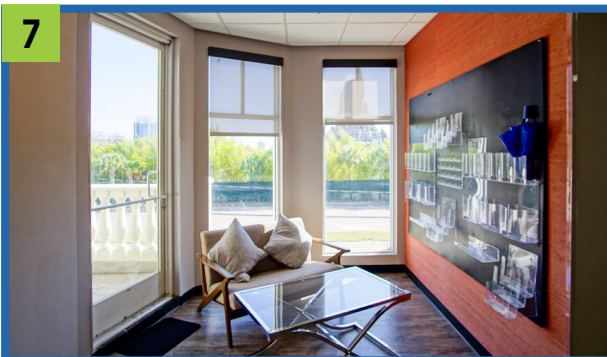
Information furnished regarding the subject property is believed to be accurate, but no guarantee or representation is made. References to square footage are approximate. This offering is subject to errors, omissions, prior sale or lease or withdrawal without notice. ©2026 First Capital Property Group, Licensed Real Estate Brokers & Managers.



**FIRST CAPITAL
Property Group**

Commercial Real Estate Services

SUITE 2-1: ± 2,831 RSF



615 E. Colonial Dr., Orlando, FL 32803 Phone: 407.872.0209 Fax: 407.426.8542

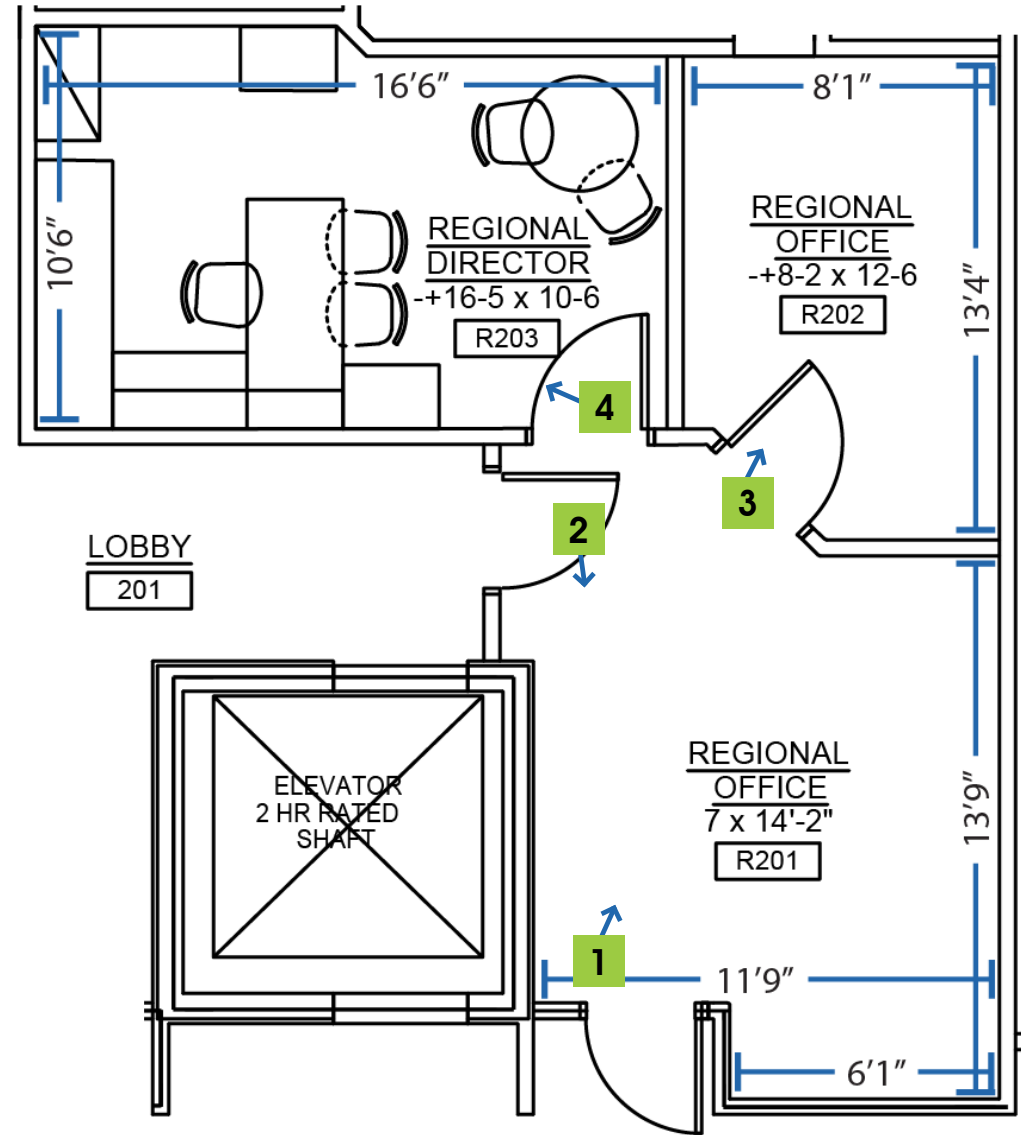
Information furnished regarding the subject property is believed to be accurate, but no guarantee or representation is made. References to square footage are approximate. This offering is subject to errors, omissions, prior sale or lease or withdrawal without notice. ©2026 First Capital Property Group, Licensed Real Estate Brokers & Managers.

SUITE 2-2: ± 510 RSF



TAKE A VIRTUAL TOUR
VIA MATTERPORT

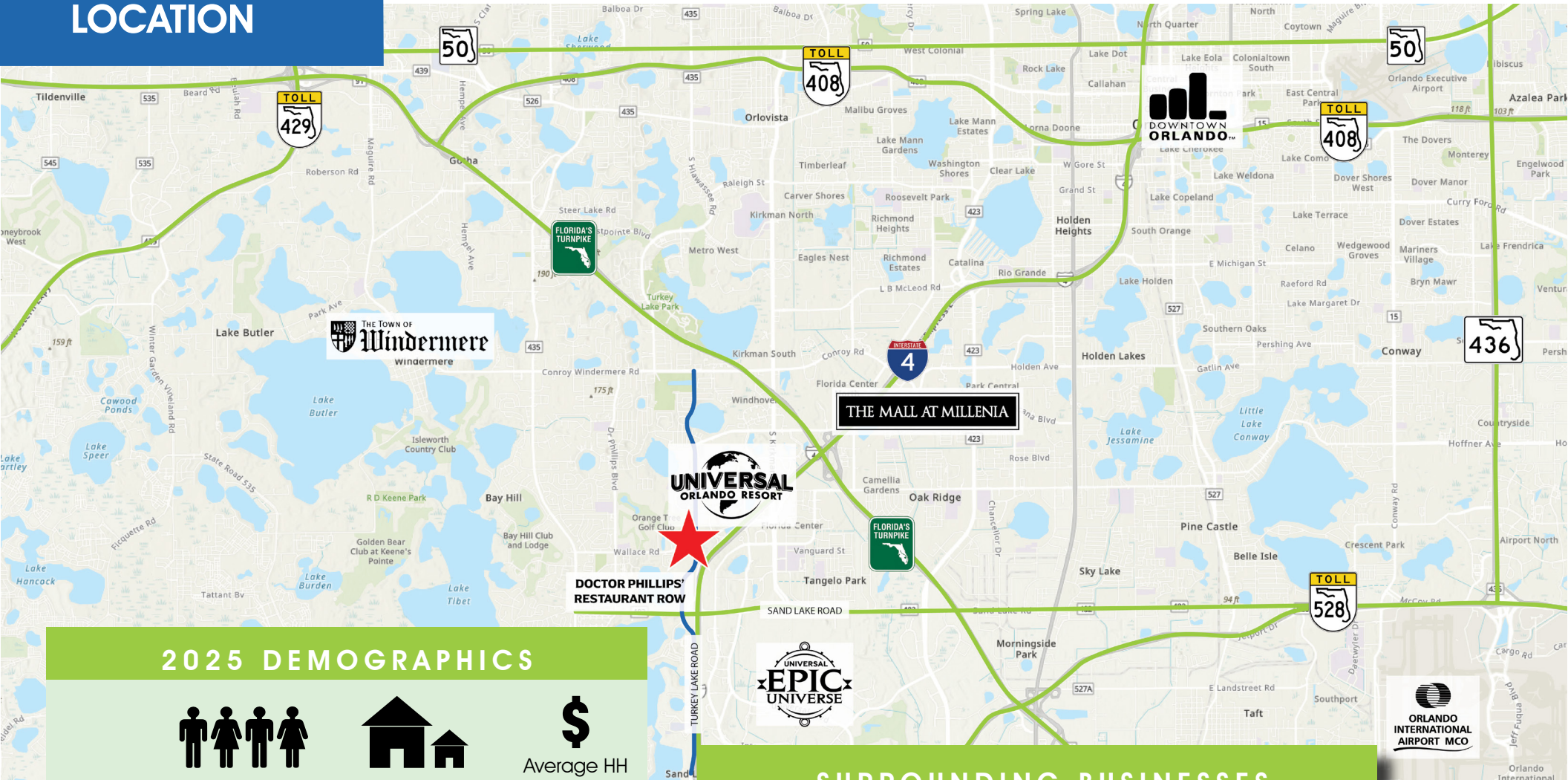
Visit: https://fcpq.com/6900_Turkey_Lake/



615 E. Colonial Dr., Orlando, FL 32803 Phone: 407.872.0209 Fax: 407.426.8542

Information furnished regarding the subject property is believed to be accurate, but no guarantee or representation is made. References to square footage are approximate. This offering is subject to errors, omissions, prior sale or lease or withdrawal without notice. ©2026 First Capital Property Group, Licensed Real Estate Brokers & Managers.

LOCATION



2025 DEMOGRAPHICS



Total Population



Total Households



Average HH Income

5 Mins

8,180

3,566

\$150,861

10 Mins

47,151

18,502

\$153,727

15 Mins

185,868

71,292

\$112,921

SURROUNDING BUSINESSES

2025

5 Mins

10 Mins

15 Mins

Retail Businesses

253

985

2,866

Food & Drink Businesses

128

456

1,108

615 E. Colonial Dr., Orlando, FL 32803 Phone: 407.872.0209 Fax: 407.426.8542

Information furnished regarding the subject property is believed to be accurate, but no guarantee or representation is made. References to square footage are approximate. This offering is subject to errors, omissions, prior sale or lease or withdrawal without notice. ©2026 First Capital Property Group, Licensed Real Estate Brokers & Managers.



FIRST CAPITAL
Property Group

Commercial Real Estate Services

THE NEIGHBORHOOD



615 E. Colonial Dr., Orlando, FL 32803 Phone: 407.872.0209 Fax: 407.426.8542

Information furnished regarding the subject property is believed to be accurate, but no guarantee or representation is made. References to square footage are approximate. This offering is subject to errors, omissions, prior sale or lease or withdrawal without notice. ©2026 First Capital Property Group, Licensed Real Estate Brokers & Managers.