

LAND FOR SALE - 5.26 ACRES

NEC 34TH & GRAND

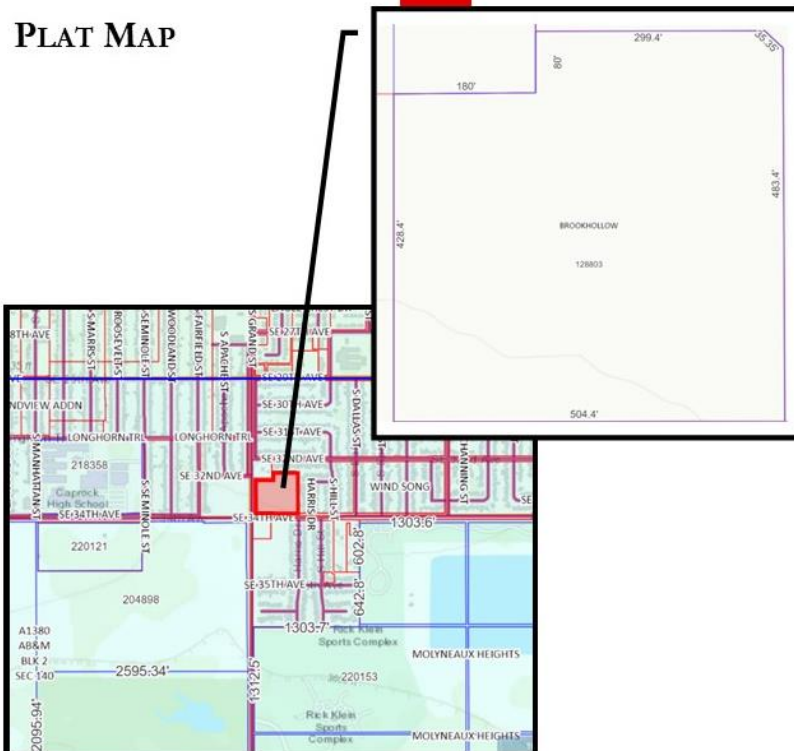
AMARILLO, TEXAS

AERIAL MAP



- ◆ \$1,260,190 (\$5.50/SF)
- ◆ 5.26 ACRES
- ◆ ZONED GENERAL RETAIL (GR)
- ◆ PRIME CORNER
- ◆ EXCELLT ACCESS & VISIBILITY
- ◆ WILL DIVIDE OR BUILD TO SUIT
- ◆ TRAFFIC COUNT: 11,537/DAY

PLAT MAP



WWW.PATDAVISPROPERTIES.COM



PAT DAVIS, BROKER

806.355.7200 x203

806.679.7907

pat@patdavisproperties.com



LEW BRADSHAW

MARKETING & BUSINESS DEVELOPMENT

806.355.7200 x208

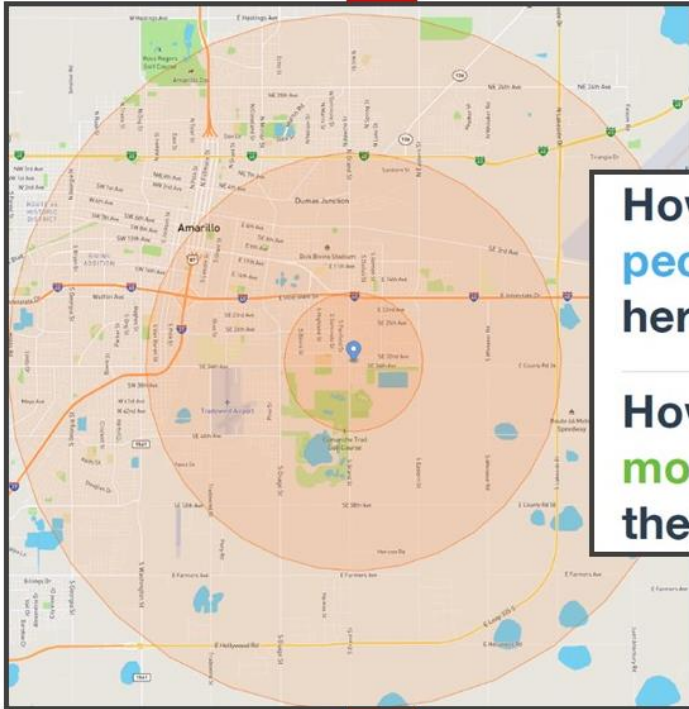
806.674.7716

lew@patdavisproperties.com

LAND FOR SALE - 5.26 ACRES

NEC 34TH & GRAND, AMARILLO, TEXAS

DEMOGRAPHICS @ 1, 3, & 5 MILES



How many
people live
here?

1 MI	3 MI	5 MI
6K	34K	103K
CITY: 200K		COUNTY: 141K

How much
money do
they make?

1 MI	3 MI	5 MI
\$62K	\$54K	\$49K
CITY: \$61K		COUNTY: \$78K
<i>median household income</i>		

POPULATION PROJECTIONS

State and county population projections.

	2000	2010	2020	2030	% Population Change			% Population Change 2020-2030
					2000-2010	2010-2020	2020-2030	
Texas	20,851,820	25,145,561	29,145,505	32,912,882				13%
Randall County	104,312	120,725	140,753	159,318				13%
Potter County	113,546	121,073	118,525	113,747				-4%

Source: Texas Demographic Center, Projections of the Total Population of Texas and Counties in Texas, 2020-2060, October 2022.
U.S. Census Bureau, Decennial Censuses 2000, 2010, and 2020.



PAT DAVIS, BROKER

806.355.7200 x203

806.679.7907

pat@patdavisproperties.com



LEW BRADSHAW
MARKETING & BUSINESS DEVELOPMENT

806.355.7200 x208

806.674.7716

lew@patdavisproperties.com

LAND FOR SALE - 5.26 ACRES

NEC 34TH & GRAND, AMARILLO, TEXAS

DEMOGRAPHICS @ 1, 3, & 5 MILES

DEMOGRAPHICS

Population

	1 mile	3 miles	5 miles
Population	6,419	34,086	103,373
Population Density (people per sq mi)	2,065	1,239	1,355

Source: U.S. Census Bureau, 2022 American Community Survey, Tables B01003

Income

	1 mile		3 miles		5 miles	
Median Household Income (in 2022 inflation adjusted dollars)	\$61,509		\$53,523		\$48,781	
Mean Household Income (in 2022 inflation adjusted dollars)	\$67,073		\$62,444		\$65,153	
Families in Poverty	256	16%	1,249	15%	4,034	16%
Households	2,171		12,678		38,818	
Less than \$25,000	481	22%	3,015	24%	9,292	24%
\$25,000 to \$49,999	398	18%	2,919	23%	10,548	27%
\$50,000 to \$74,999	381	18%	2,762	22%	6,879	18%
\$75,000 to \$99,999	447	21%	1,660	13%	4,650	12%
\$100,000 to \$199,999	442	20%	2,201	17%	6,504	17%
\$200,000 or more	22	1%	121	1%	945	2%

Source: U.S. Census Bureau, 2022 American Community Survey, Tables B19001, B19013, B19025, B17010

Age

	1 mile		3 miles		5 miles	
Median Age	31		33		33	
Population	6,419		34,086		103,373	
9 & under	1,010	16%	5,093	15%	16,092	16%
10 to 19	1,114	17%	5,648	17%	15,868	15%
20 to 29	958	15%	5,053	15%	15,281	15%
30 to 39	982	15%	4,899	14%	15,609	15%
40 to 49	648	10%	4,122	12%	12,401	12%
50 to 59	630	10%	3,647	11%	10,856	11%
60 to 69	533	8%	3,213	9%	9,402	9%
70 & over	545	8%	2,411	7%	7,865	8%

Source: U.S. Census Bureau, 2022 American Community Survey, Tables B01001



PAT DAVIS, BROKER

806.355.7200 x203

806.679.7907

pat@patdavisproperties.com



LEW BRADSHAW

MARKETING & BUSINESS DEVELOPMENT

806.355.7200 x208

806.674.7716

lew@patdavisproperties.com

