



**1910 St Rt 59**  
**Kent, Ohio 44240**

*Photo shown is not actual asset.*

SQ FT AVAILABLE	7,200/SF
LEASE RATE	TBD
LEASE TYPE	TBD
YEAR BUILT	TBD
UNITS	4 (1,800/SF)
ACRES	2.02
FRONTAGE	200'
DEPTH	445'
TRAFFIC COUNT	18,464 AADT

## Property Details

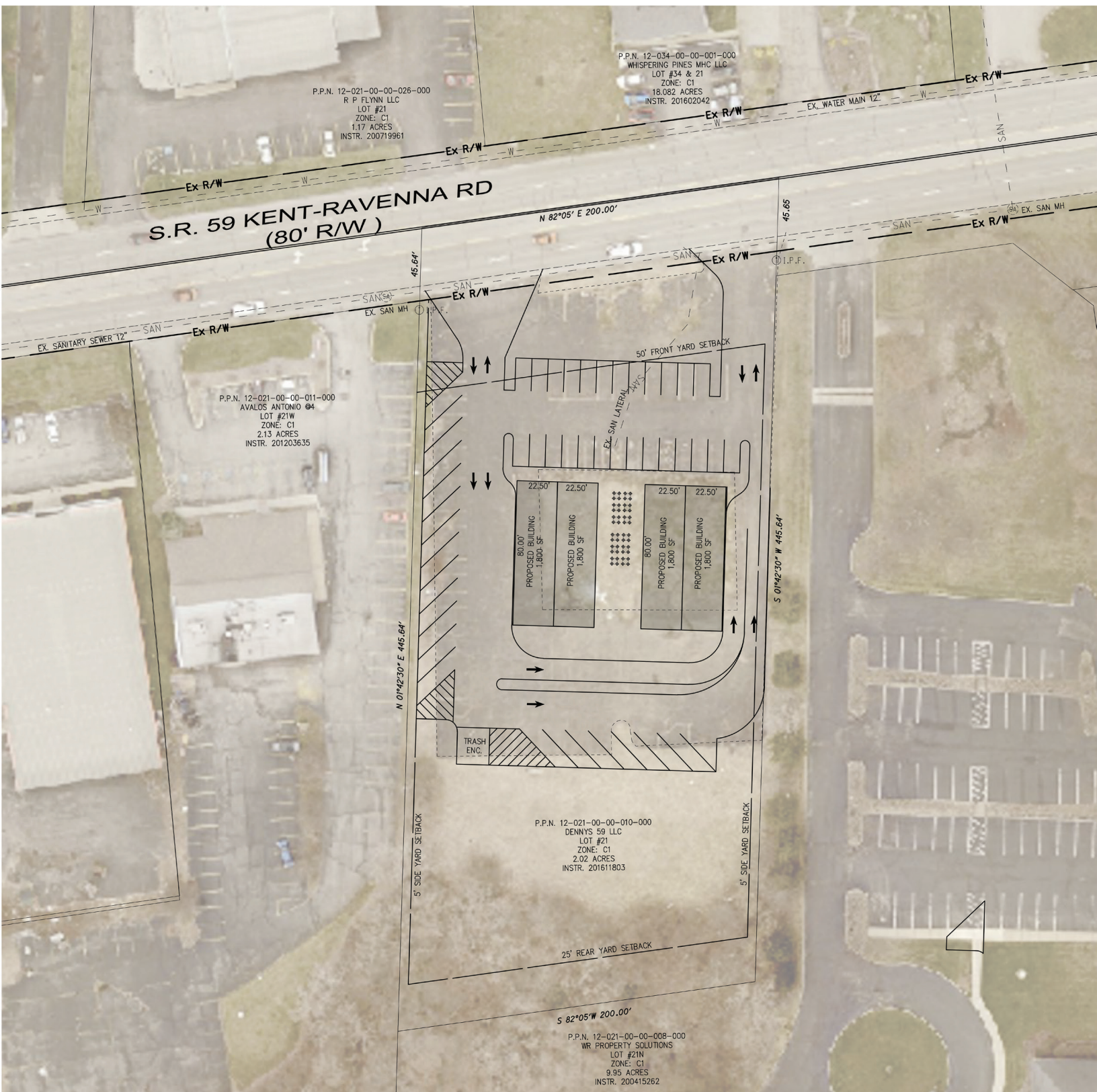
- Property can be build to suit, land lease, or lease space.
- To be built, three vacant units available.
- Located Northeast of Kent State University in Franklin Township.
- Enrollment is 25,283 at the Kent Campus.

**Tim Bishman**  
P 330 620 8487  
tim@naispring.com

**Sean Sanford**  
P 330 284 0331  
sean@starkcountycommercial.com



# SITE PLAN



NO WARRANTY OR REPRESENTATION, EXPRESS OR IMPLIED, IS MADE AS TO THE ACCURACY OF THE INFORMATION CONTAINED HEREIN, AND THE SAME IS SUBMITTED SUBJECT TO ERRORS, OMISSIONS, CHANGE OF PRICE, RENTAL OR OTHER CONDITIONS, PRIOR SALE, LEASE OR FINANCING, OR WITHDRAWAL WITHOUT NOTICE, AND OF ANY SPECIAL LISTING CONDITIONS IMPOSED BY OUR PRINCIPALS NO WARRANTIES OR REPRESENTATIONS ARE MADE AS TO THE CONDITION OF THE PROPERTY OR ANY HAZARDS CONTAINED THEREIN ARE ANY TO BE IMPLIED.

8234 Pittsburg Ave NW  
North Canton, OH 44720  
+1 330 966 8800  
naispring.com



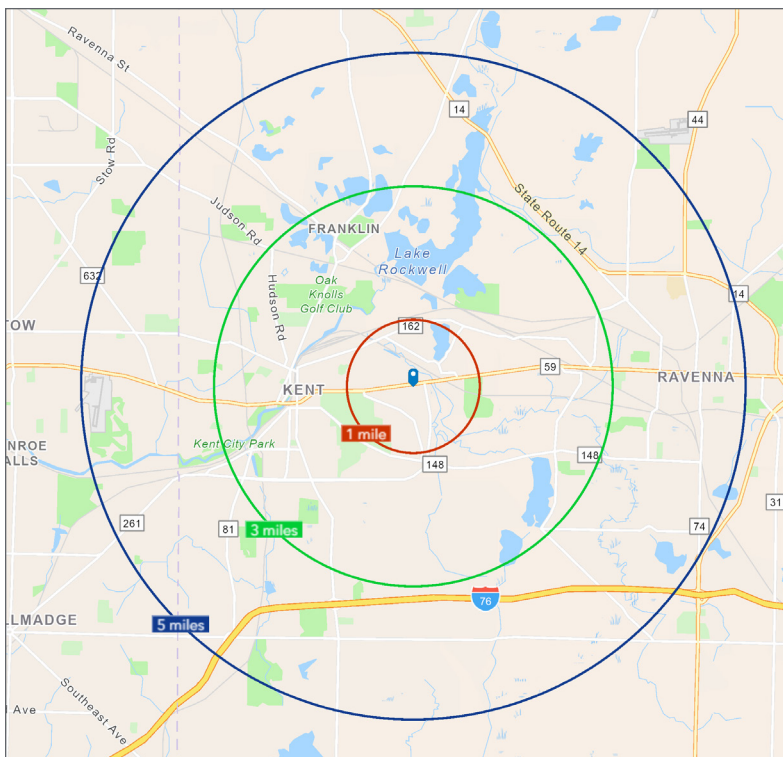
# LOCATION MAPS



NO WARRANTY OR REPRESENTATION, EXPRESS OR IMPLIED, IS MADE AS TO THE ACCURACY OF THE INFORMATION CONTAINED HEREIN, AND THE SAME IS SUBMITTED SUBJECT TO ERRORS, OMISSIONS, CHANGE OF PRICE, RENTAL OR OTHER CONDITIONS, PRIOR SALE, LEASE OR FINANCING, OR WITHDRAWAL WITHOUT NOTICE, AND OF ANY SPECIAL LISTING CONDITIONS IMPOSED BY OUR PRINCIPALS NO WARRANTIES OR REPRESENTATIONS ARE MADE AS TO THE CONDITION OF THE PROPERTY OR ANY HAZARDS CONTAINED THEREIN ARE ANY TO BE IMPLIED.

8234 Pittsburg Ave NW  
North Canton, OH 44720  
+1 330 966 8800  
[naispring.com](http://naispring.com)





### Demographic Information

	1 mile	3 miles	5 miles
Population	10,987	36,226	76,689
Households	2,984	14,305	31,358
Families	808	6,361	17,288
Average Household Size	1.90	2.12	2.24
Owner Occupied Housing Units	794	6,950	18,806
Renter Occupied Housing Units	2,190	7,355	12,552
Median Age	22.2	26.5	34.2
Median Household Income	\$20,900	\$42,253	\$56,943
Average Household Income	\$43,315	\$74,258	\$86,270