



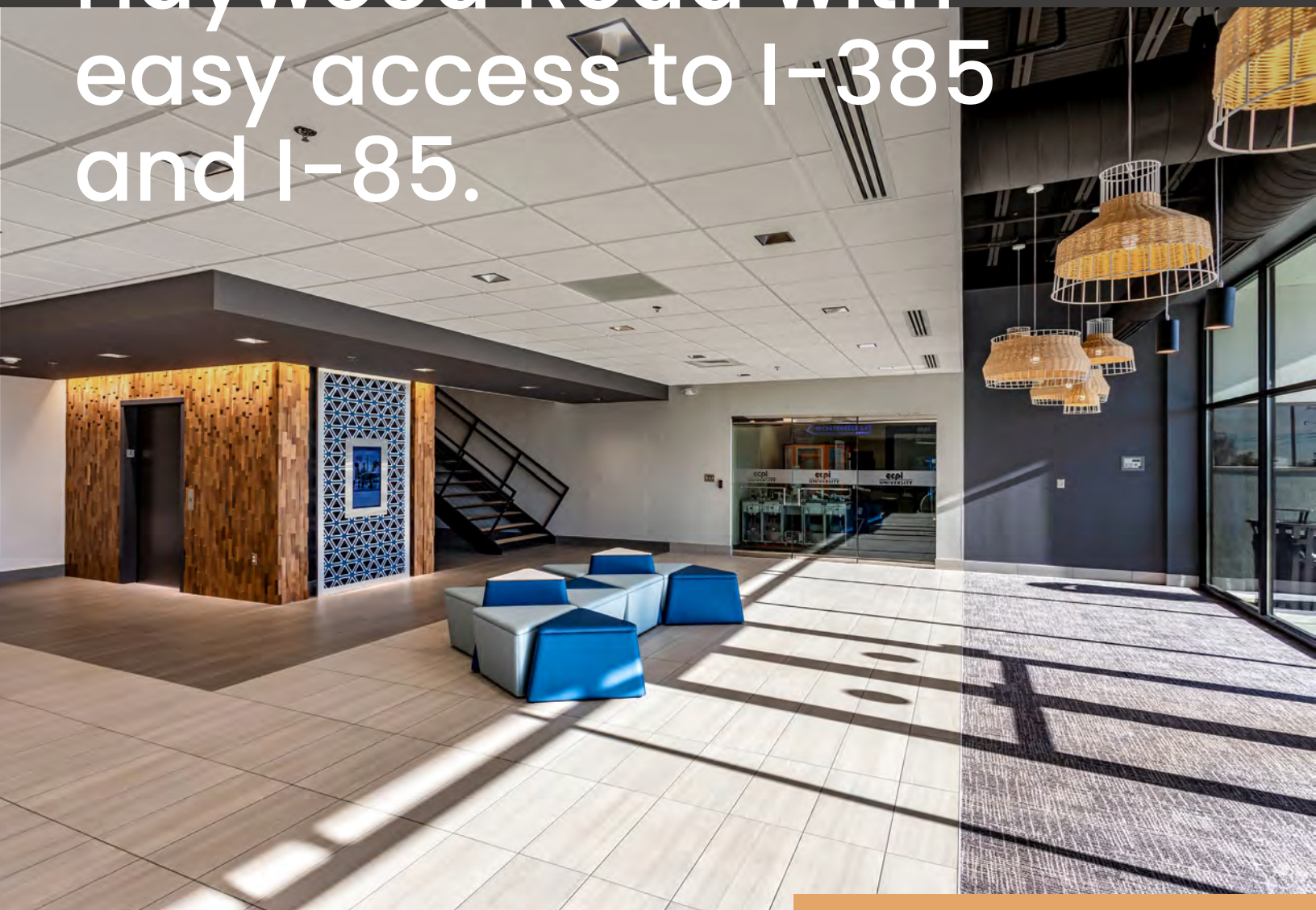
1001

KEYS DRIVE

Office Space For Lease



1001 Keys Drive is
conveniently located
off of Frontage Road
in close proximity to
Haywood Road with
easy access to I-385
and I-85.





PROPERTY DETAILS



Building Size

±78,925 SF



Available Space

±35,500 SF 2nd Floor
±8,925 SF Annex



Parking

6/1,000 SF



Lease Rate

Contact broker
for pricing



Signage

Building & monument
signage available



Renovations

Interior & exterior
renovations in 2021



Visibility

High visibility
from I-385



Location

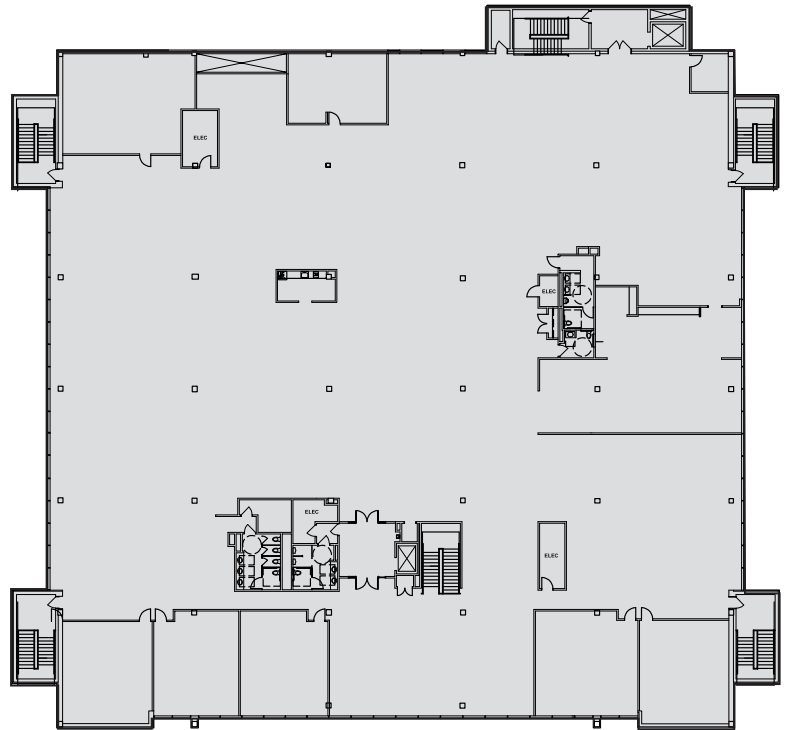
Easy access to
I-85 & I-385



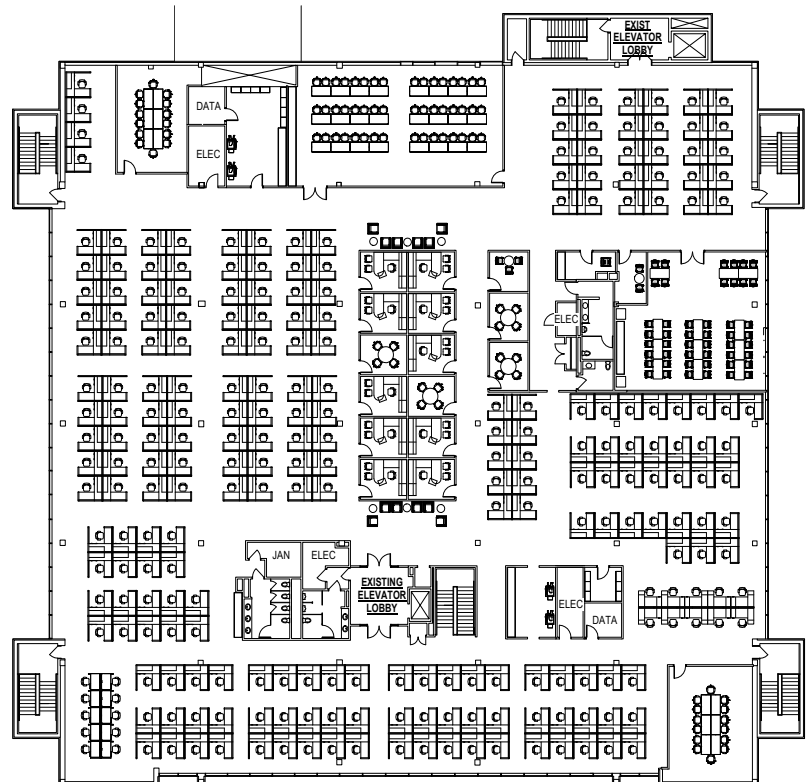
Space Opportunities | $\pm 8,925 - \pm 44,425$ SF FOR LEASE

Second Floor

$\pm 35,500$ RSF



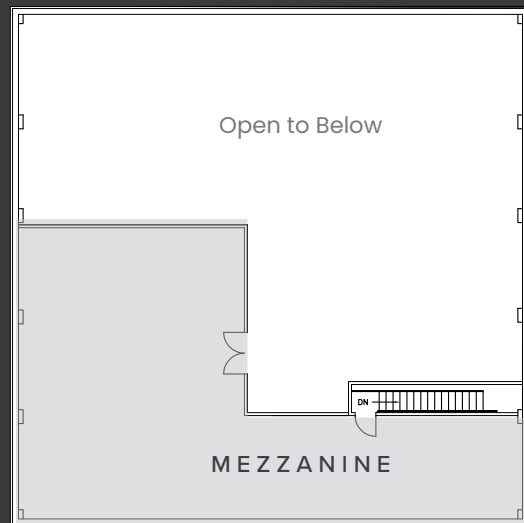
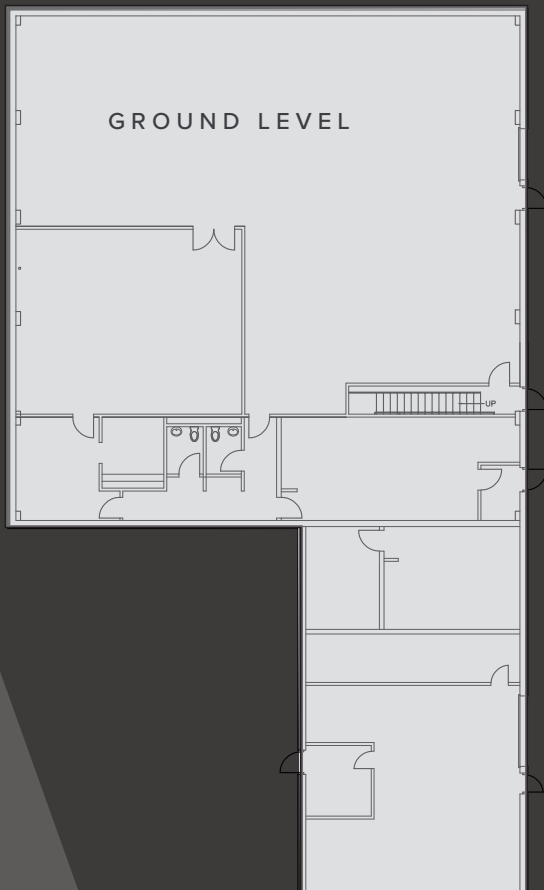
Sample Test Fit



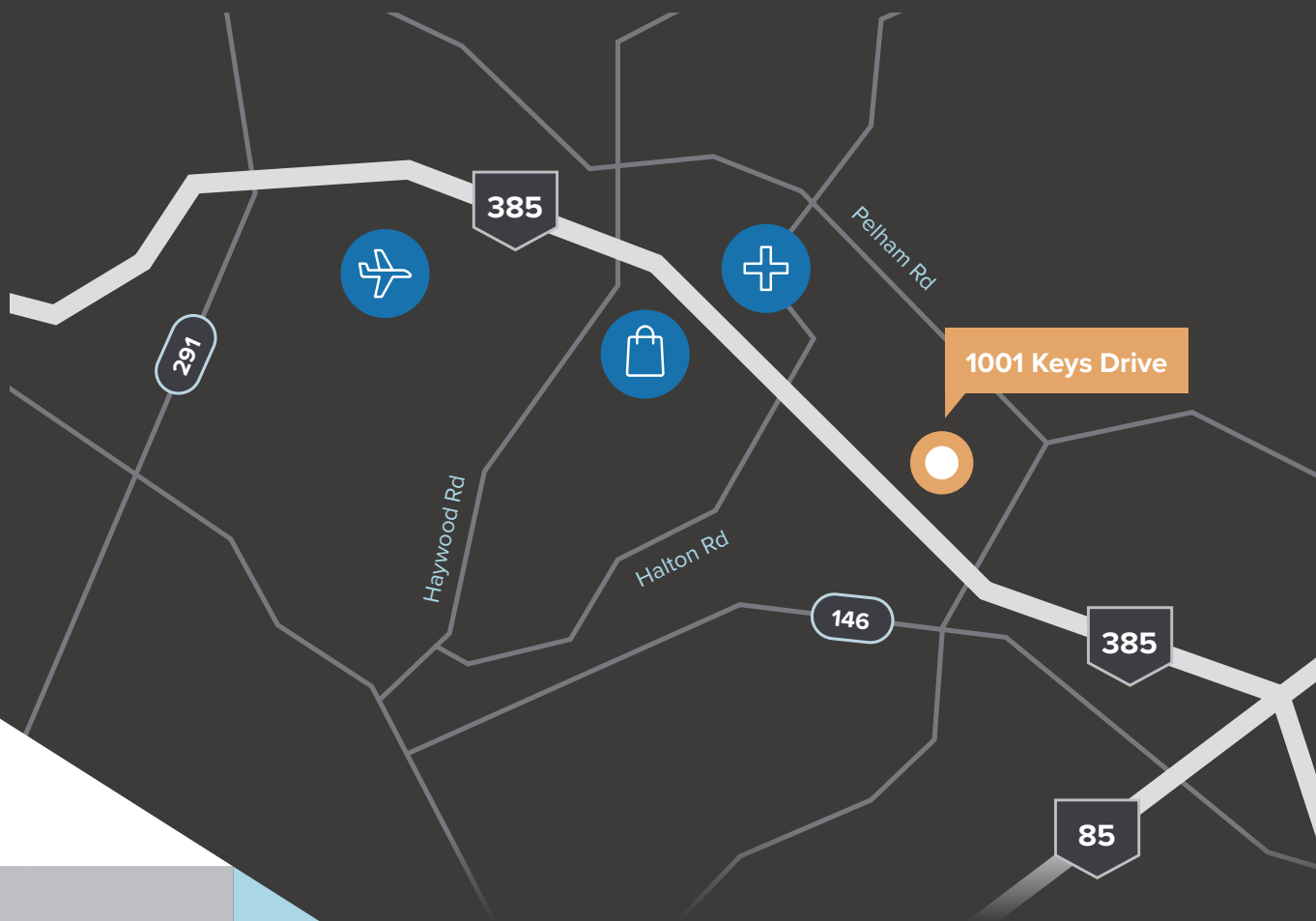


Annex Space

±8,925 RSF

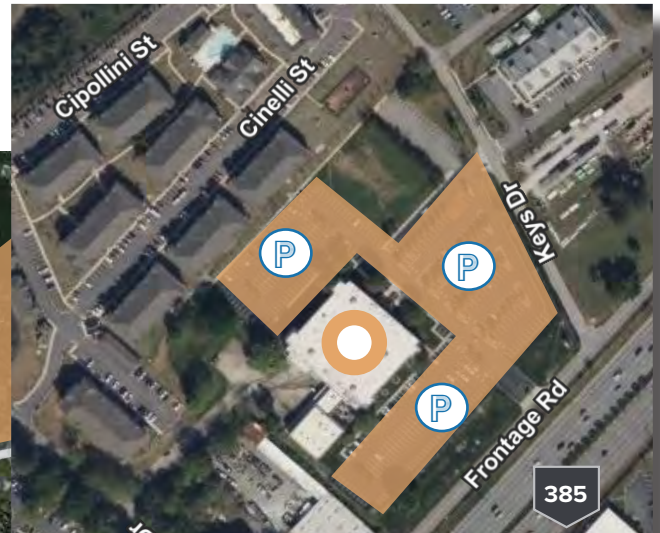


Convenient Location





1001 Keys Drive
features an ideal
location with
abundant parking.





For More Information:

Charles Gouch, CCIM SIOR

Senior Vice President

+1 864 527 6035

charles.gouch@cbre.com

Blaine Hart, SIOR

Senior Vice President

+1 864 527 6035

charles.gouch@cbre.com

Shelby Dodson, LEED AP

Senior Vice President

+1 864 527 6022

shelby.dodson@cbre.com

WWW.CBRE.US/GREENVILLE

CBRE

©2025 CBRE, Inc. All rights reserved. This information has been obtained from sources believed reliable, but has not been verified for accuracy or completeness. Any projections, opinions, or estimates are subject to uncertainty. The information may not represent the current or future performance of the property. You and your advisors should conduct a careful, independent investigation of the property and verify all information. Any reliance on this information is solely at your own risk. CBRE and the CBRE logo are service marks of CBRE, Inc. and/or its affiliated or related companies in the United States and other countries. All other marks displayed on this document are the property of their respective owners. Photos herein are the property of their respective owners and use of these images without the express written consent of the owner is prohibited. PMStudio_April2025