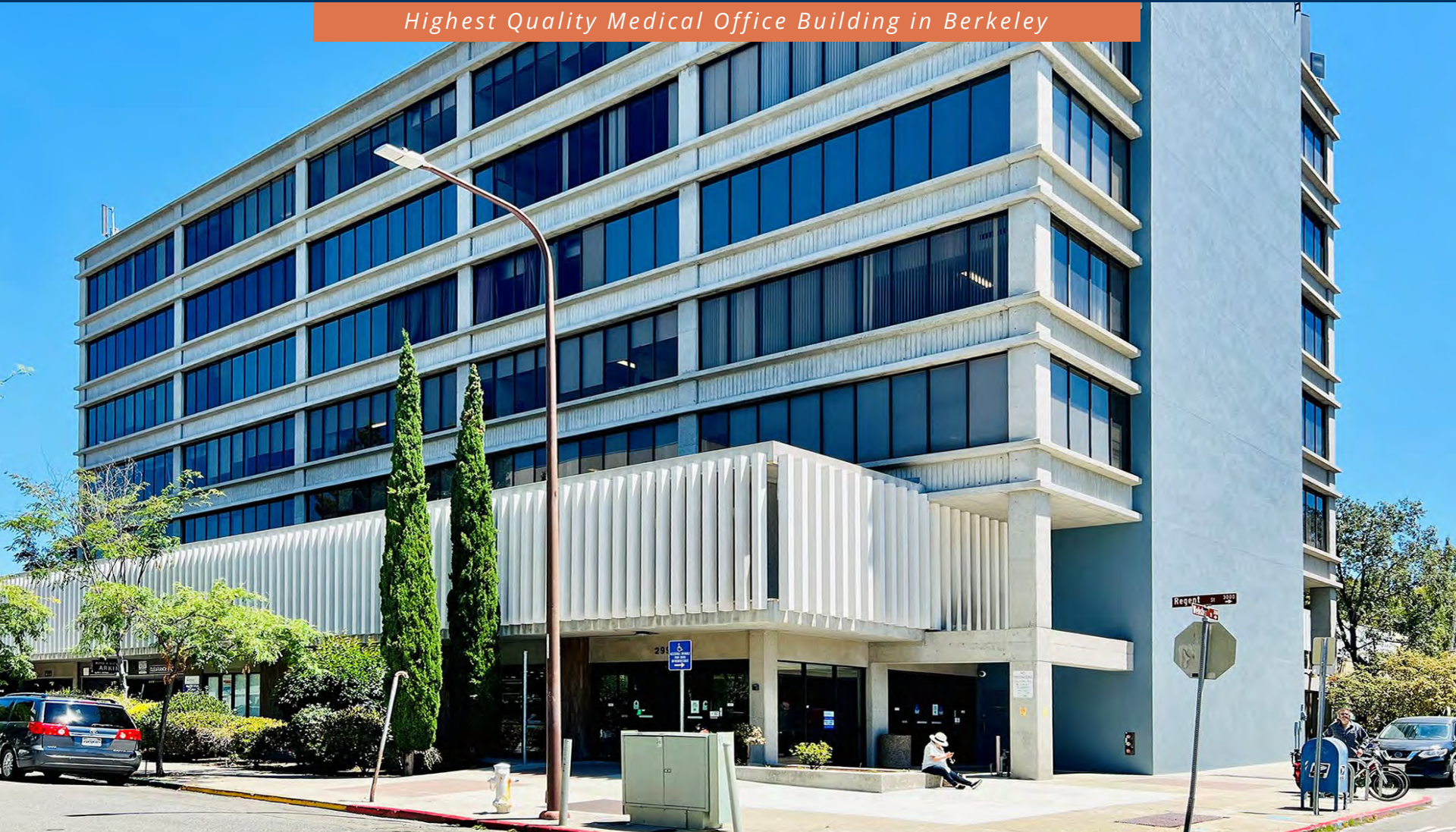


BAYSIDE REALTY PARTNERS PRESENTS

Regent Medical Center

2999 Regent Street, Berkeley

Highest Quality Medical Office Building in Berkeley



TRASK LEONARD
President and CEO
650.533.2591
tleonard@baysiderp.com
DRE#01152101



CAROLINE DOYLE
Senior Vice President
650.722.1495
cdoyle@baysiderp.com
DRE#01906397

BAYSIDE
REALTY PARTNERS
MEDICAL/DENTAL PROPERTY SPECIALISTS

Regent Medical Center

2999 Regent Street, Berkeley

LOCATION

- Adjacent to Sutter Alta Bates Summit Medical Center, a 461-bed hospital
- Close proximity to UC Berkeley, highways 13 and 24 and I-880 and Ashby BART station
- Within steps of luxurious College Avenue restaurants and shops
- Area has high concentration of commercially insured patients



BUILDING

- Highest quality and dominant medical office building in market
- Exceptional views of San Francisco and The Bay
- Large mix of practice types, including lab
- New institutional owner with immediate plans to upgrade common areas
- First and second floor suites allow for easy access to attached parking garage
- 195 structured parking stalls with direct access to the building

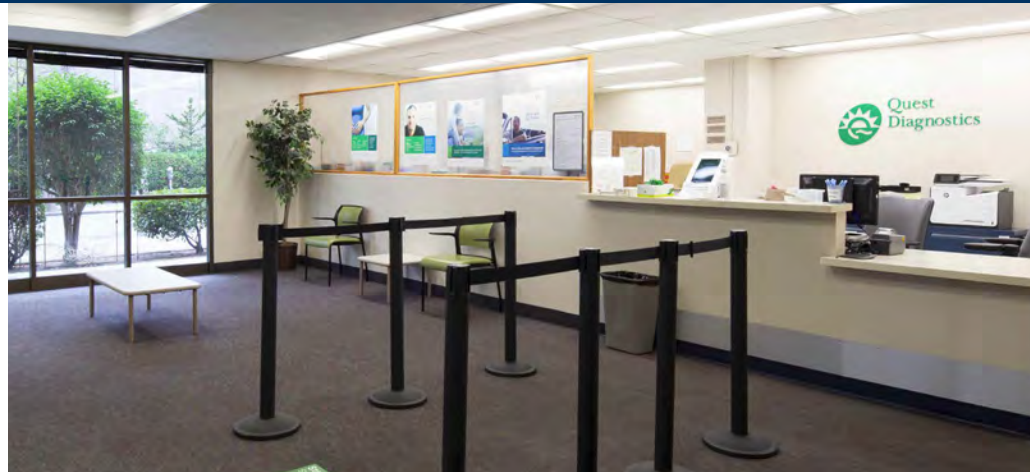
Regent Medical Center

2999 Regent Street, Berkeley



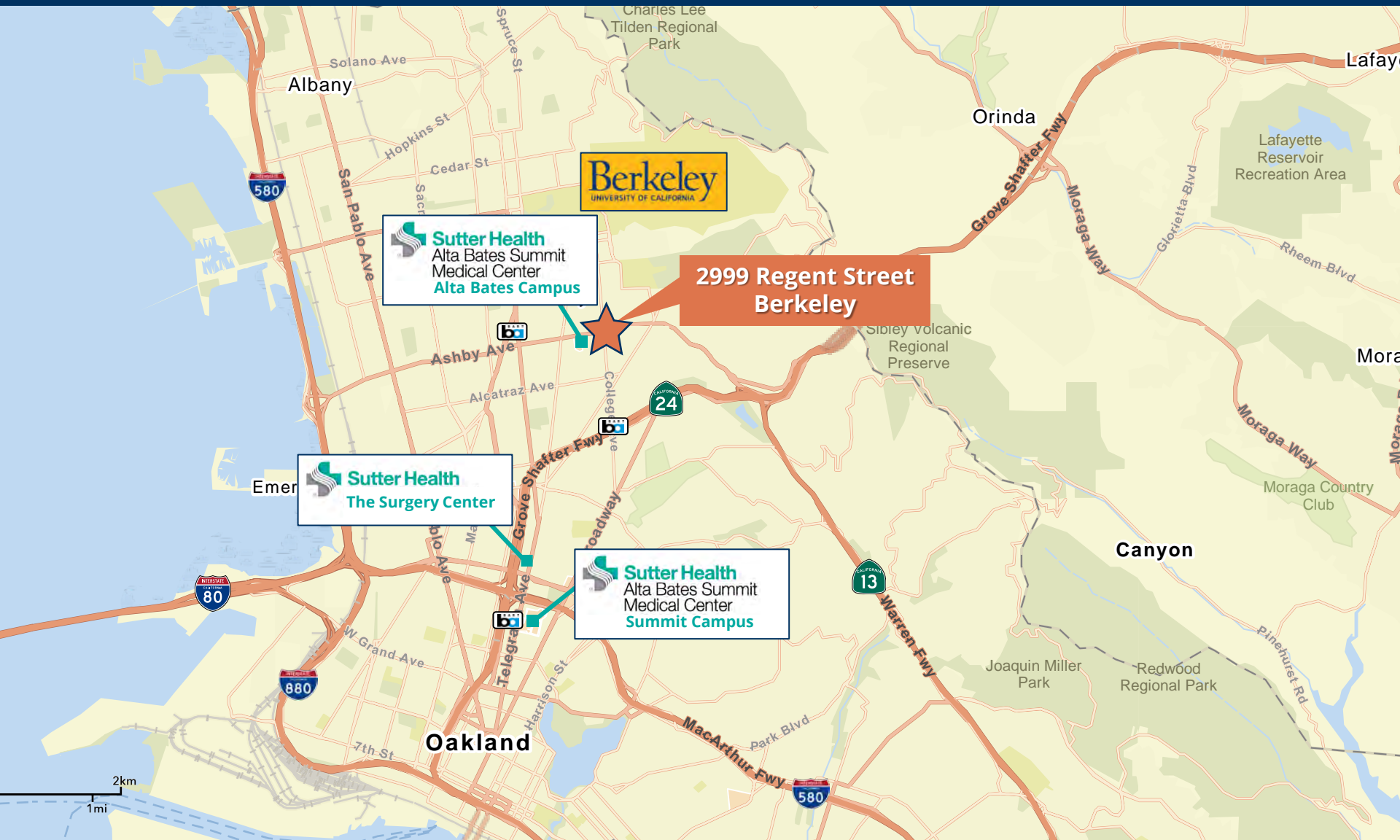
Regent Medical Center

2999 Regent Street, Berkeley



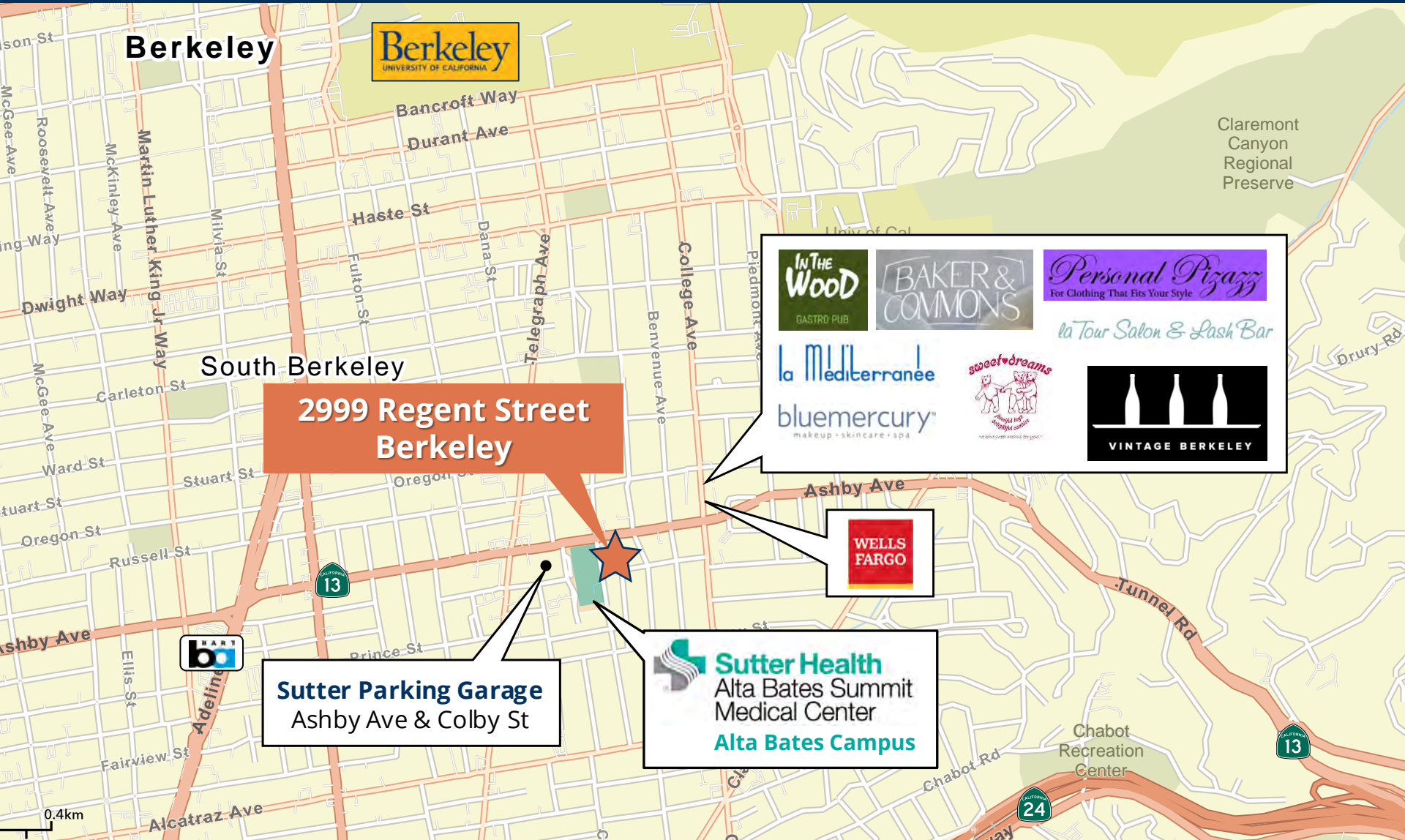
Regent Medical Center

2999 Regent Street, Berkeley



Regent Medical Center

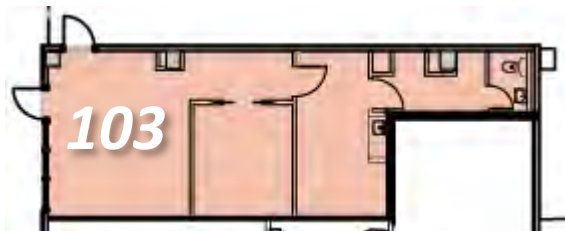
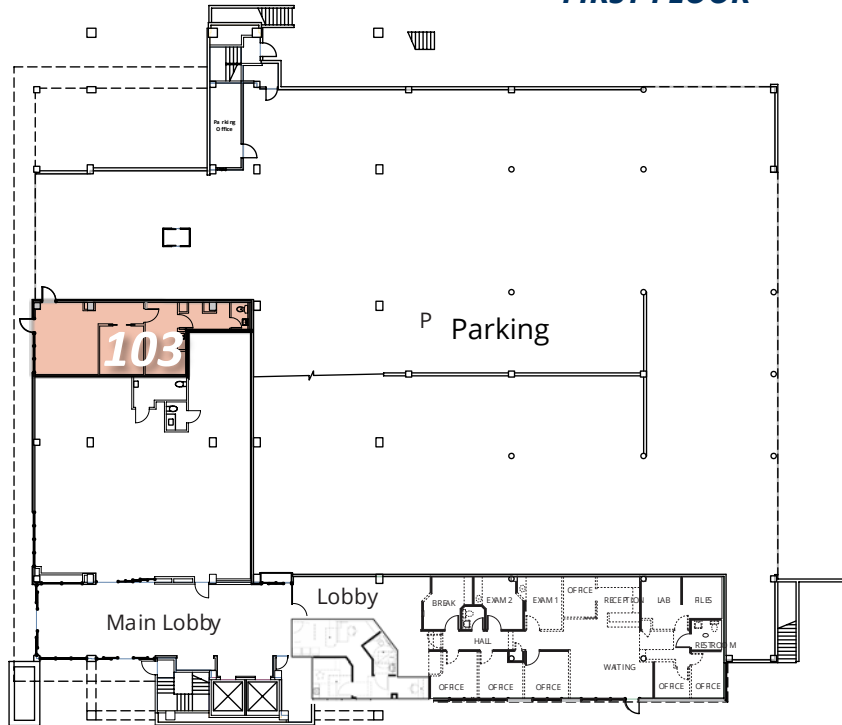
2999 Regent Street, Berkeley



Regent Medical Center

2999 Regent Street, Berkeley

FIRST FLOOR



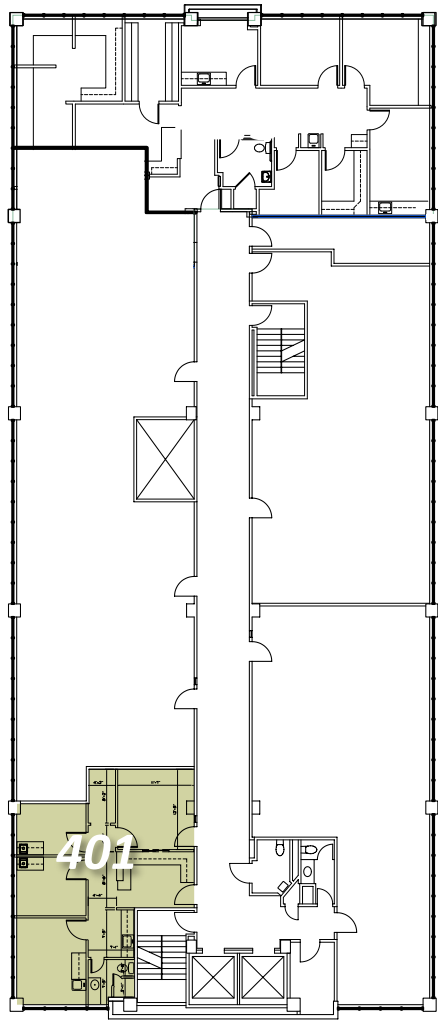
FIRST FLOOR

Suite 103 750 RSF

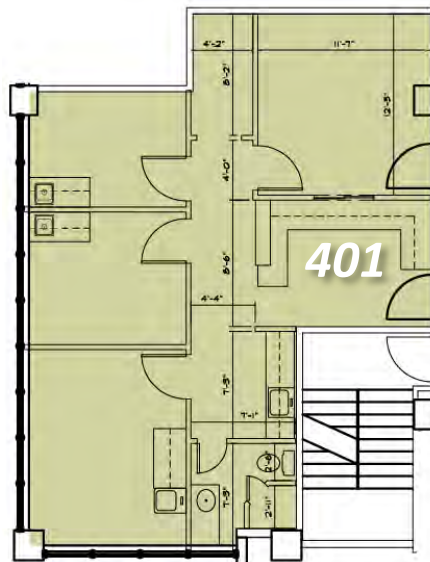
Direct access from Regent Street, large reception, exam room, office, restroom

Regent Medical Center

2999 Regent Street, Berkeley



FOURTH FLOOR

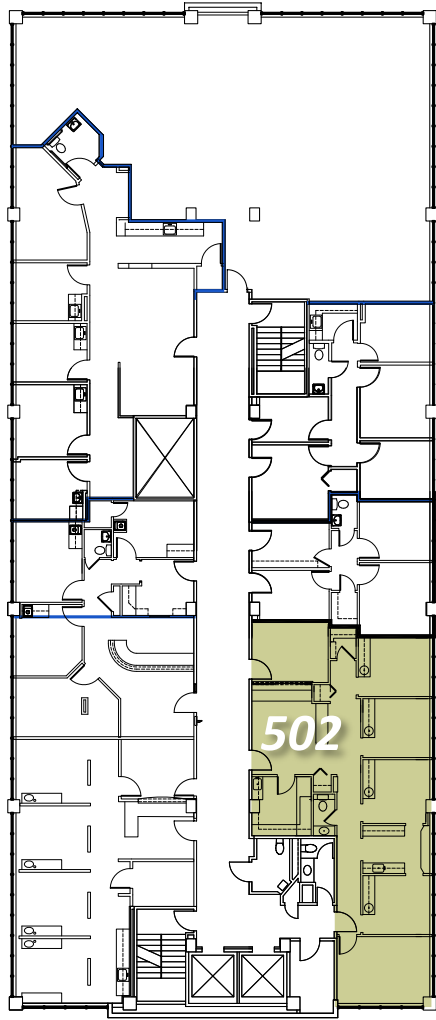


FOURTH FLOOR

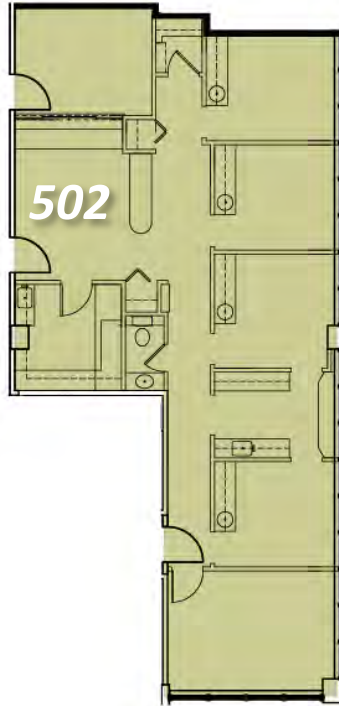
Suite 401 952 RSF
Reception area, 2 exam rooms,
restroom, 2 offices. Corner location

Regent Medical Center

2999 Regent Street, Berkeley



FIFTH FLOOR



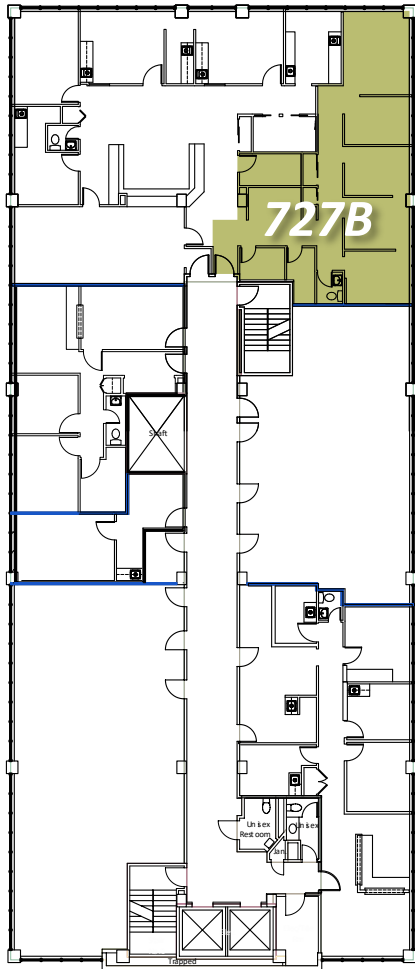
FIFTH FLOOR

Suite 502 1,483 RSF

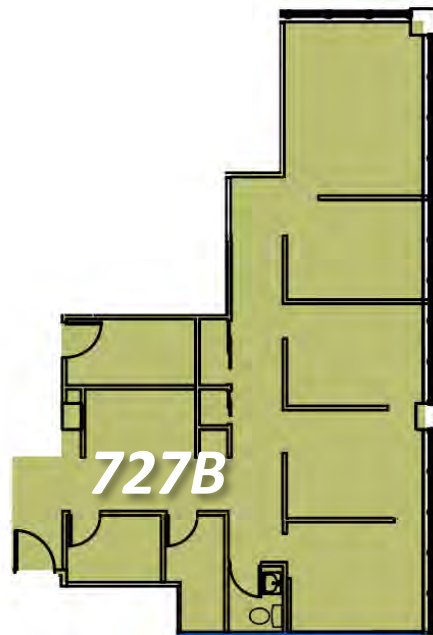
Reception area, waiting room, 4 dental operatories, sterilization and lab area, 2 private offices, storage, restroom

Regent Medical Center

2999 Regent Street, Berkeley



SEVENTH FLOOR



SEVENTH FLOOR

Suite 727B 1,143 RSF

Top Floor suite. 5/6 exam rooms.
Former dental suite with operatories
that can be converted to medical exam
or office

Meet Your Expert Team



TRASK LEONARD

President and CEO

650.533.2591

tleonard@baysiderp.com

DRE#01152101



CAROLINE DOYLE

Senior Vice President

650.722.1495

cdoyle@baysiderp.com

DRE#01906397

BAYSIDE REALTY PARTNERS

The preeminent provider of management, leasing, construction management and accounting services for healthcare properties.



MARKET LEADER

- Leasing & Property Management
- Investment Sales
- Tenant Representation
- Construction Management
- Property Repositioning



INFLUENTIAL NETWORK

- Institutional Investors
- Healthcare Systems and Healthcare Districts
- Physicians & Districts
- Private Investors



DOMINANT FOOTPRINT

- 2 million SF leased & managed
 - 50+ MOB portfolio
 - 10,000-240,000 SF
 - 500,000 SF portfolio
- San Francisco's largest MOBs
- 950+ leases executed
- 500+ medical and dental tenants

DOMINANT. EXPERT. INFLUENTIAL.