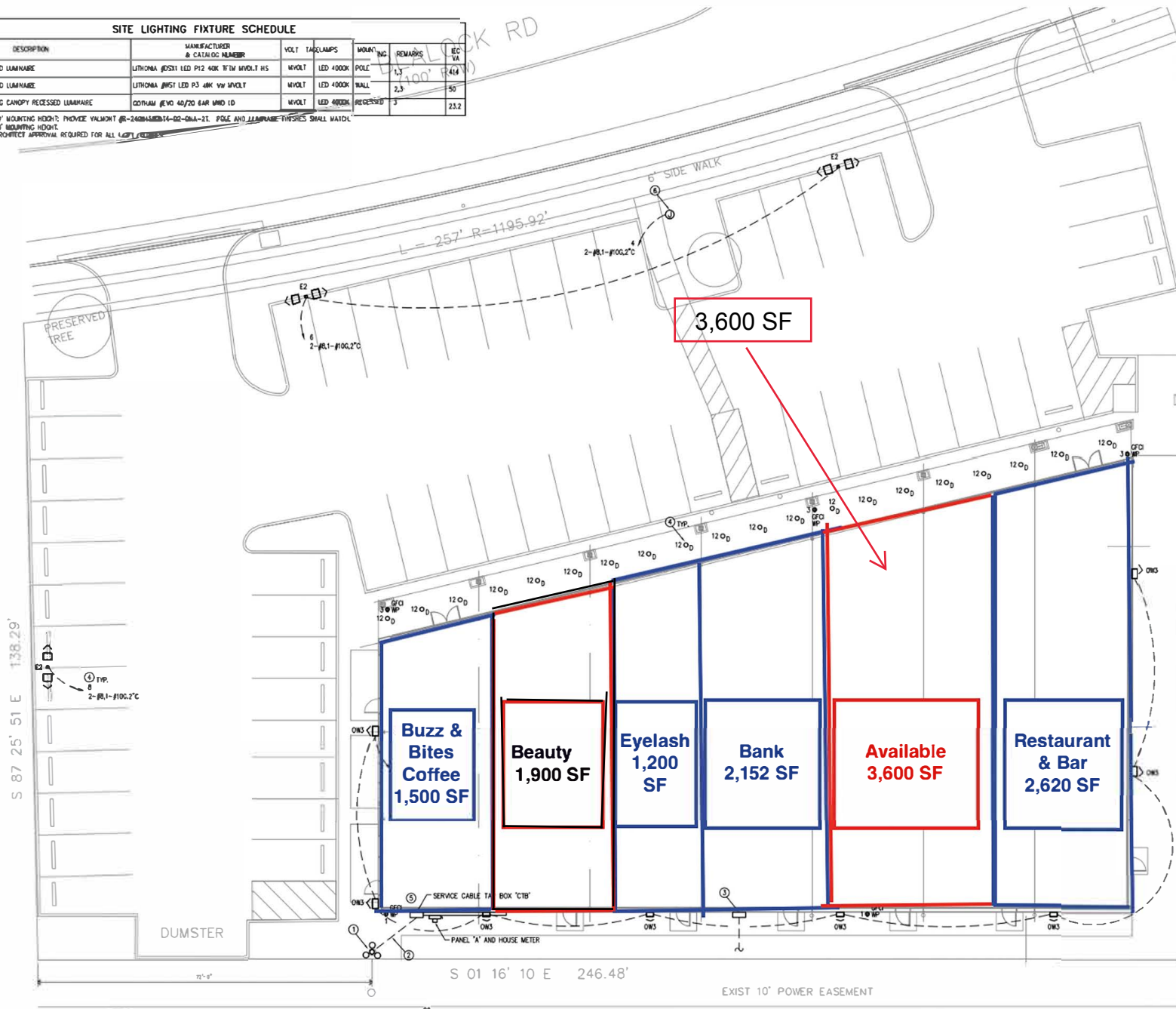


SITE LIGHTING FIXTURE SCHEDULE							
TYPE	DESCRIPTION	MANUFACTURER & CATALOG NUMBER	VOLT	TACLAMPS	MOUNTING	REMARKS	EQ. NO.
E2	SITE LED LUMINAIRE	LITHONIA #0531 LED P12 40K 1'x1' 1/2" MVOLT HS	MVOLT	LED 4000K	POLE	1,3	414
OM3	SITE LED LUMINAIRE	LITHONIA #051 LED P3 4K 1/2" MVOLT	MVOLT	LED 4000K	WALL	2,3	50
0	BUILDING CANOPY RECESSED LUMINAIRE	CORHAM #EVO 40/20 6AR MIND ID	MVOLT	LED 4000K	RECESSED	3	232

NOTES:  
 1. 2' MOUNTING HEIGHT; PROVIDE VALMONT #R-24084MID14-02-0MA-21. POLE AND LUMINAIRE FINISHES SHALL MATCH.  
 2. 1.5' MOUNTING HEIGHT.  
 3. ARCHITECT APPROVAL REQUIRED FOR ALL LIGHT FIXTURES.



**GENERAL NOTES**

1. LIGHTING FIXTURE SUBSCRIPTS INDICATE FIXTURE TYPE, CONTROLLING SWITCH AND CIRCUIT NUMBER. IE:  
 A 3 A INDICATES FIXTURE TYPE, PANELED 'A'  
 Q 3 3 INDICATES CIRCUIT NO. 3, PANELED 'A'
2. POWER SUBSCRIPT INDICATES CIRCUIT NUMBER, IE:  
 Q 3 3 INDICATES CIRCUIT NO. 3, PANELED 'A'
3. REFER TO E4.0 FOR LIGHTING CONTROL DIAGRAM, ONE LINE DIAGRAM, LOAD ANALYSIS, AND PANEL SCHEDULE.
4. REFER TO E1.0 FOR GENERAL NOTES, SYMBOL LEGEND, AND ELECTRICAL SPECIFICATIONS.
5. PROVIDE SCHEDULE 40 PVC CONDUIT FOR EXTERIOR SITE LIGHTING.
6. CONTRACTOR SHALL COORDINATE THE PROPOSED NEW ELECTRICAL SERVICE WITH CENTERPOINT ENERGY (CPE) PRIOR TO START OF CONSTRUCTION.
7. CONTRACTOR TO PERFORM VOLTAGE DROP CALCULATIONS AND INCREASE CONDUCTOR SIZE WHEN BRANCH CIRCUIT CALCULATED VOLTAGE DROP EXCEEDS 2.5%.
8. CONDUCTORS TO BE COPPER WITH 75°C INSULATION (IE, THHN, THWN OR TRWN).
9. CONDUITS TO BE PVC SCHEDULE 40 UNDERGROUND AND EXIT ABOVE GRADE. SIZES AS SHOWN ON THE ONE LINE DIAGRAM AND PER THE NEC. PROVIDE ONE SPARE CONDUIT IN UNDERGROUND FEEDERS. PROVIDE PULL WIRES IN EMPTY CONDUITS.

**KEYED NOTES**

- ① PROPOSED NEW TRANSFORMER POLE LOCATION. COORDINATE LOCATION AND INSTALLATION OF SERVICE WITH CPE.
- ② OVERHEAD SERVICE ENTRANCE CONDUCTORS AND CONDUITS, COORDINATE INSTALLATION WITH CPE.
- ③ PROVIDE COMMUNICATION ENCLOSURE WITH TWO 4" PVC CONDUITS TO TELEPHONE AND CABLE TV PROVIDERS. COORDINATE LOCATIONS WITH PROVIDERS; RE: TELEPHONE Riser DIAGRAM ON SHEET E1.0 FOR DETAILS.
- ④ ROUTE LIGHTING BRANCH CIRCUITS VIA LIGHTING CONTROLLER 'C1'. RE: LIGHTING CONTROLLER DIAGRAM 02/E4.0 FOR DETAILS.
- ⑤ PROVIDE SERVICE ENTRANCE EQUIPMENT INCLUDING SERVICE CABLE TAP BOX, BUSBAR OUTER, HOUSE PANEL 'A', METER, AND LIGHTING CONTROLLER 'C1'. RE: ONE LINE DIAGRAM ON SHEET E4.0 FOR CONDUIT & CONDUCTOR QUANTITY AND SIZE. COORDINATE LOCATION AND INSTALLATION OF SERVICE WITH CPE. PROVIDE SERVICE CABLE TAP BOX PER CPE STANDARDS.
- ⑥ PROVIDE 1-1/2" CONDUIT AND JUNCTION BOX FOR EXTERIOR STORAGE. VERIFY MOUNTING HEIGHT AND LOCATION WITH ARCHITECT. COORDINATE VOLTAGE WITH THE ACTUAL SHOWN. ROUTE LIGHTING BRANCH CIRCUITS THRU LIGHTING CONTROLLER 'C1'. RE: LIGHTING CONTROLLER DIAGRAM 02/E4.0 FOR DETAILS.

