



1325 Quincy Street

NE ARTS DISTRICT, MINNEAPOLIS





1325 QUINCY STREET NE

BUILDING FEATURES:

LOCATION:	NE Arts District; Minneapolis, MN
SIZE:	102,000 SF
FLOORS:	2 Stories
PARKING:	3 spaces per 1,000+
CEILING HEIGHT:	32 ft Clear Height
USE:	Office, Retail & Entertainment

MINNEAPOLIS CREATIVE CAMPUS:

One-of-a-kind 102,000 square foot creative campus in the rapidly evolving Northeast Arts District.

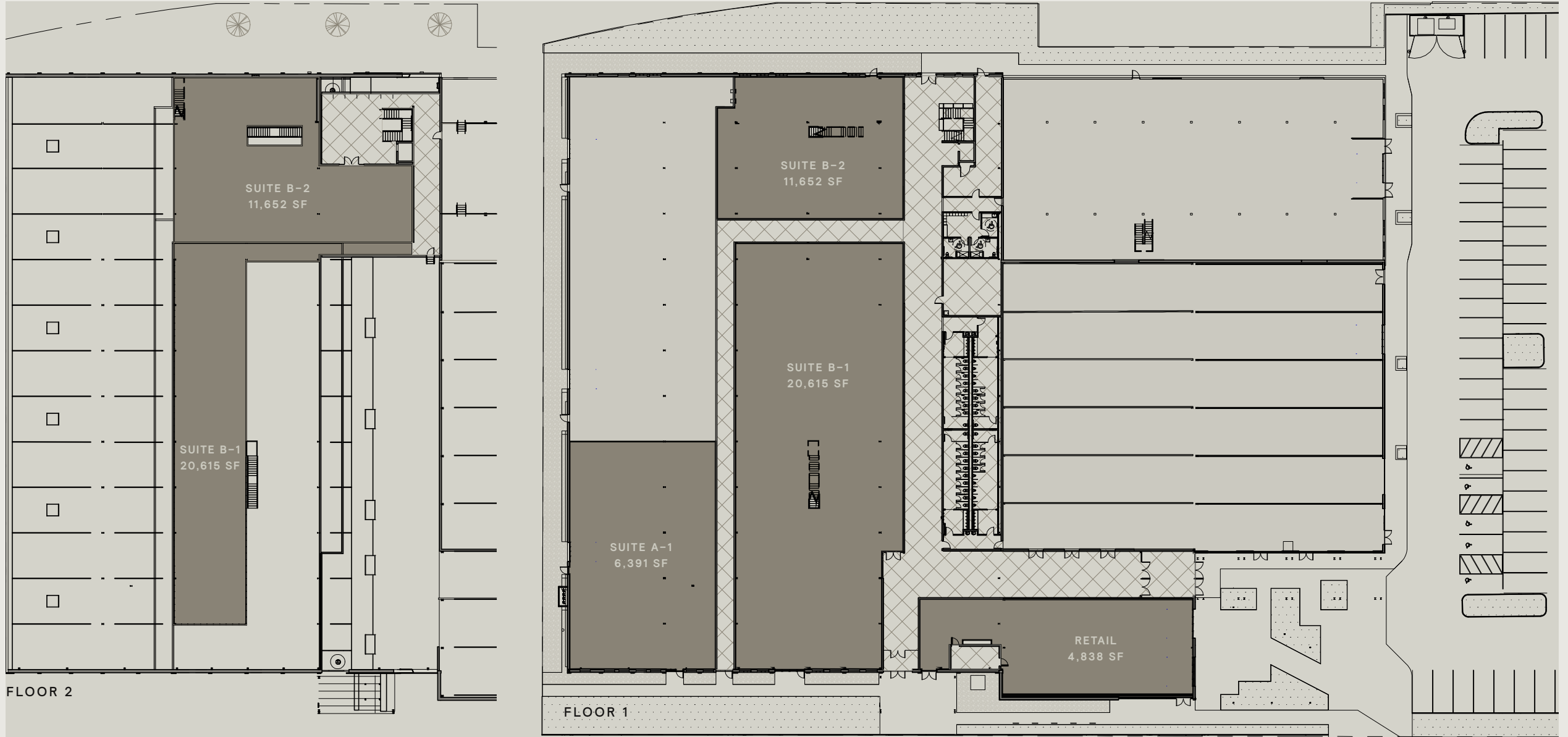
CENTRAL LOCATION:

Located in the rapidly evolving Northeast Arts District in Minneapolis, home to BluDot Furniture, Sportsengine, Bauhaus Brewery, WORKSHOP, Able Seedhouse, Windmill Design, Rocket66 Software, Empire Coffee, Sociable Cider Werks, and many more unique minneapolis businesses.

MATT PISTORIO
+1 312 728 3619
MPISTORIO@R2.ME

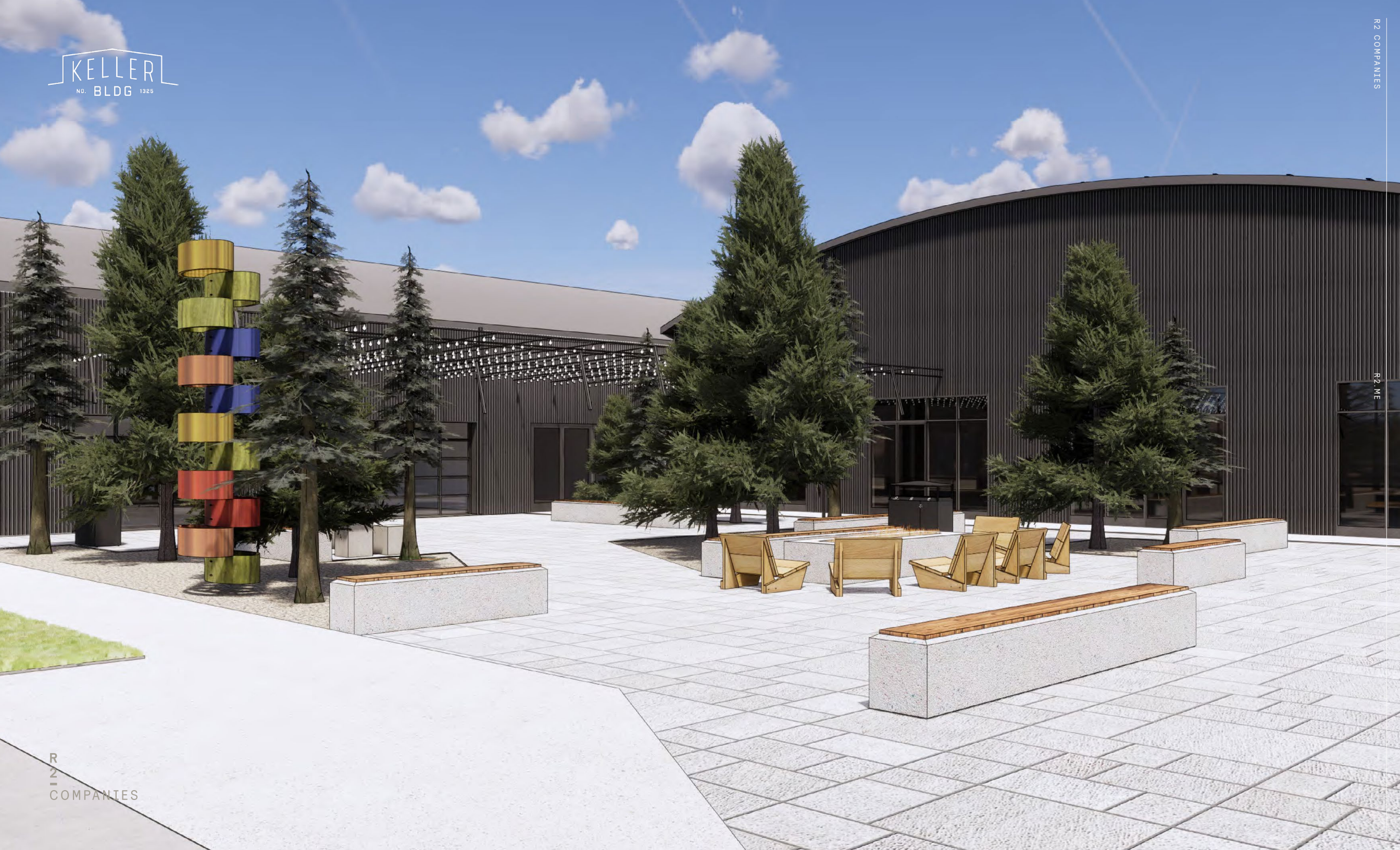
CHAD BLIHOVDE
+1 612 554 8423
CBILHOVDE@R2.ME

Available Space



THE KELLER BLDG





KELLER
NO. BLDG 1925

R2 COMPANIES



R2
COMPANIES

R2.ME





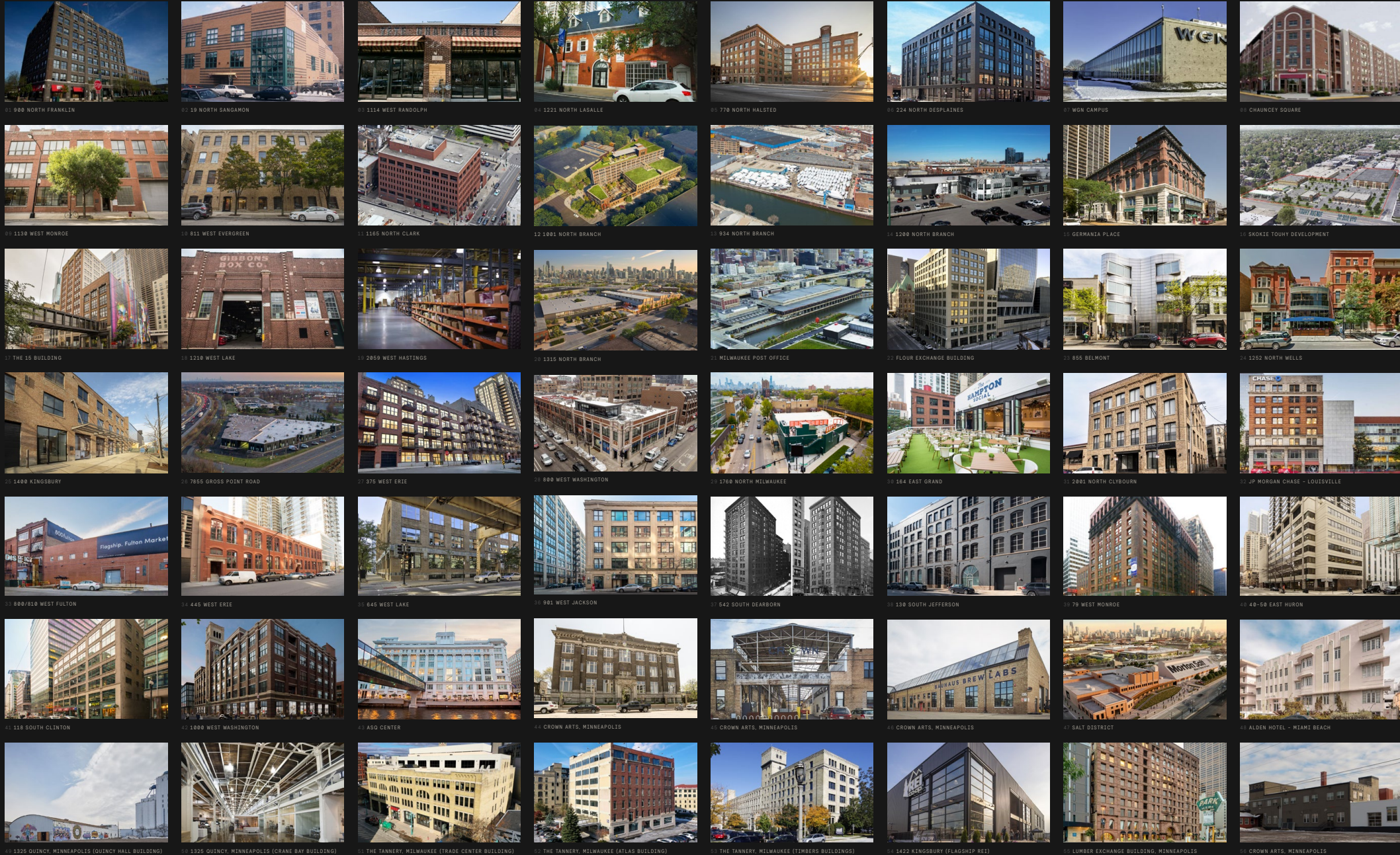








BICYCLE PARKING



R2 Companies

BY THE NUMBERS

5.2M
Square Foot Portfolio

\$600M
Assets Under Management

+40 Assets
Currently Owned

3 Offices
Chicago, Milwaukee, Minneapolis

50+
R2 Operating Team

2007
Year Founded

In Relentless Pursuit of Opportunity.

R2 was created to source, acquire and uncover irreplaceable real estate in emerging and in-fill urban locations. R2 owns and operates over 6 million square feet across over 40 buildings and maintains offices in Chicago, Minneapolis & Milwaukee.

R2's vertically integrated platform is led by experienced Principals in Investment, Leasing, Asset Management, Property Management, Design & Construction. R2 has a multi-year track record of successfully repositioning Creative Office buildings across the Midwest.

For additional information, visit R2.ME

R
2
—

R2 COMPANIES
1200 N NORTH BRANCH STREET
CHICAGO, ILLINOIS 60642
R2.ME

MATT PISTORIO
312.728.3619
MPISTORIO@R2.ME

CHAD BLIHVDE
+1 612 554 8423
CBILHOVDE@R2.ME