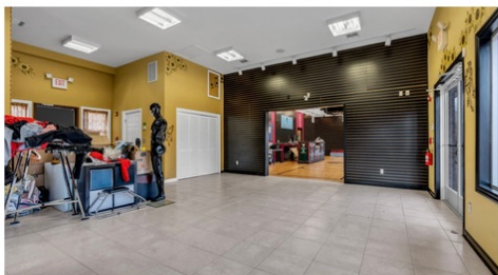


910 PERRINEVILLE RD. MILLSTONE, NJ 08535

Just Listed

AVAILABLE FOR THE PRICE OF \$1,499,999 OR LEASE



PROPERTY DESCRIPTION

Located in Millstone Township, this newer commercial building offers 2,700 SF of flexible space for lease or sale. The property features a paver parking lot with excellent frontage, providing high visibility. Divided into three individual spaces, each with its own restroom, it can also be leased as one large unit. Situated between Manalapan and Monroe, this prime location ensures easy access and exposure. Separately metered for convenience. Ideal for a variety of businesses. Don't miss this fantastic opportunity!

CONTACT US FOR MORE INFO.

