

# Bitter Lake Center

929 N 130<sup>TH</sup> STREET, SEATTLE, WASHINGTON 98133

**1,802 RSF AVAILABLE - MULTIPLE CONFIGURATIONS**

**FREE UNRESERVED PARKING**

**NNN'S OF \$5.09/SF**

**GREAT SIGNAGE OPPORTUNITIES AVAILABLE**

**TONS OF NATURAL LIGHT**

**LAST AVAILABLE SPACE IN THE BUILDING**

## SPACE FOR LEASE



For Leasing:

MICHELLE ABBOTT  
D: 206.533.5097  
C: 206.963.3737  
[mabbott@iwcre.com](mailto:mabbott@iwcre.com)

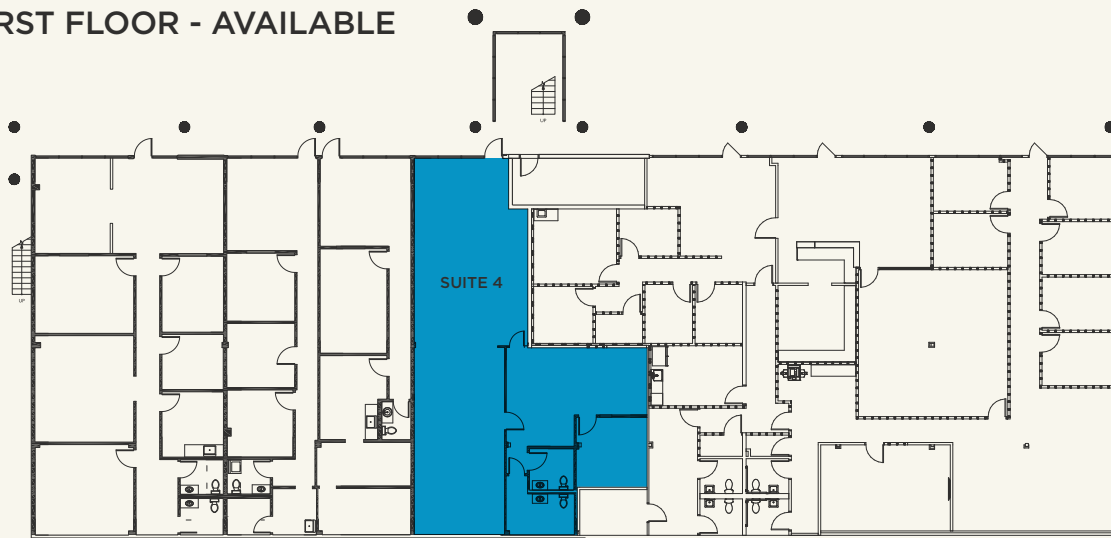


# Bitter Lake Center

929 N 130<sup>TH</sup> STREET, SEATTLE, WA 98133



## FIRST FLOOR - AVAILABLE



## AVAILABLE

SUITE	SF	\$/SF	MO. BASE	MO. GROSS
4	1,802	\$19	\$2,853	\$3,618

- ▶ Recently replaced HVAC
- ▶ Separately metered electricity
- ▶ Drop ceiling
- ▶ Private, ground-floor entrance
- ▶ Parking ratio of 2.6 stalls per 1,000 SF
- ▶ Parking level access to second floor

## DEMOGRAPHICS



Estimated  
Population

1 MI	24,090
3 MI	161,187
5 MI	393,043



Average  
Household  
Income

1 MI	\$88,481
3 MI	\$103,598
5 MI	\$110,075



Daytime  
Employment

1 MI	8,309
3 MI	47,867
5 MI	120,912

Source: CoStar Data, 2019



Leasing Contact:

MICHELLE ABBOTT  
D 206.533.5097 | C 206.963.3737  
[mabbott@iwcre.com](mailto:mabbott@iwcre.com)

[www.iwcre.com](http://www.iwcre.com)

The information herein has been secured from sources believed to be reliable, however, no representations are made to its accuracy. Prospective tenants or buyers should consult their professional advisors and conduct their own independent investigation. Properties are subject to change in price and/or availability without notice.