



FOR SALE OR LEASE || RETAIL SPACE WITH WAREHOUSE

SHOWROOM/RETAIL BUILDING WITH DRIVE-IN WAREHOUSE IN BACK.

5730 W. 79TH STREET, BURBANK, IL 60459

Christopher Rogala  
chris@officespacechicago.com  
312.757.4800 x101

Executive Summary



**OFFERING SUMMARY**

**Sale Price:** \$647,900

**Price / SF:** \$105.69

**Lease Price:** \$12 per SF NNN

**Building Size:** 6,130 SF

**PROPERTY OVERVIEW**

60+ years a well known auto part store location! Many uses available for this great space with amazing corner exposure on 79th street with 100-feet of frontage and a large pylon sign. Store front with warehouse in back, drive-in door, etc. Could be converted to full retail. Plenty of customer and employee parking included!

**LOCATION OVERVIEW**

On highly trafficked 79th Street, between Massasoit Ave and Major Ave. 3-blocks west of Central Ave.



SHOWROOM/RETAIL BUILDING WITH DRIVE-IN WAREHOUSE IN BACK.  
5730 W. 79TH STREET, BURBANK, IL 60459

Additional Photos





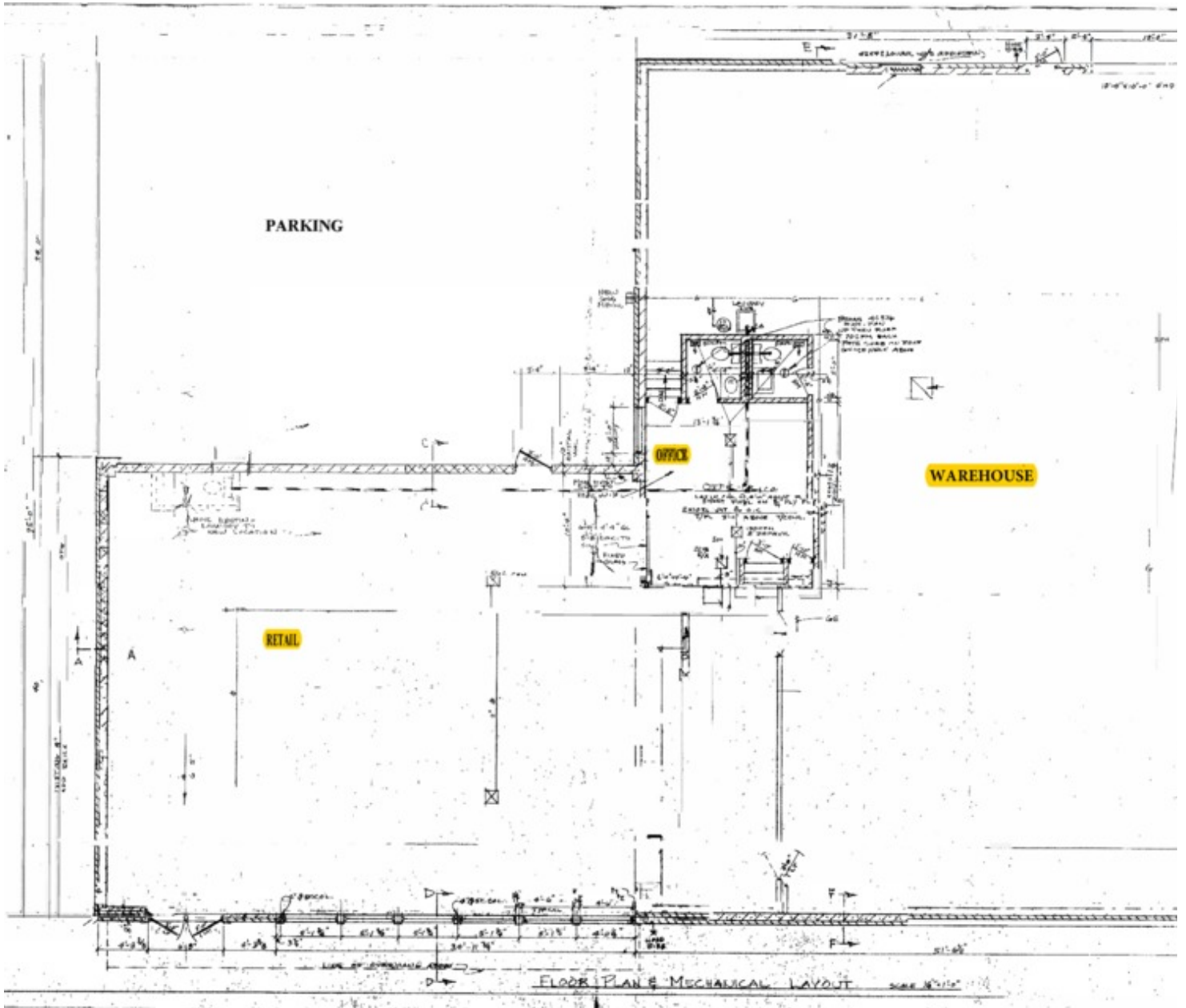
SHOWROOM/RETAIL BUILDING WITH DRIVE-IN WAREHOUSE IN BACK.  
5730 W. 79TH STREET, BURBANK, IL 60459



Additional Photos



Floor Plans

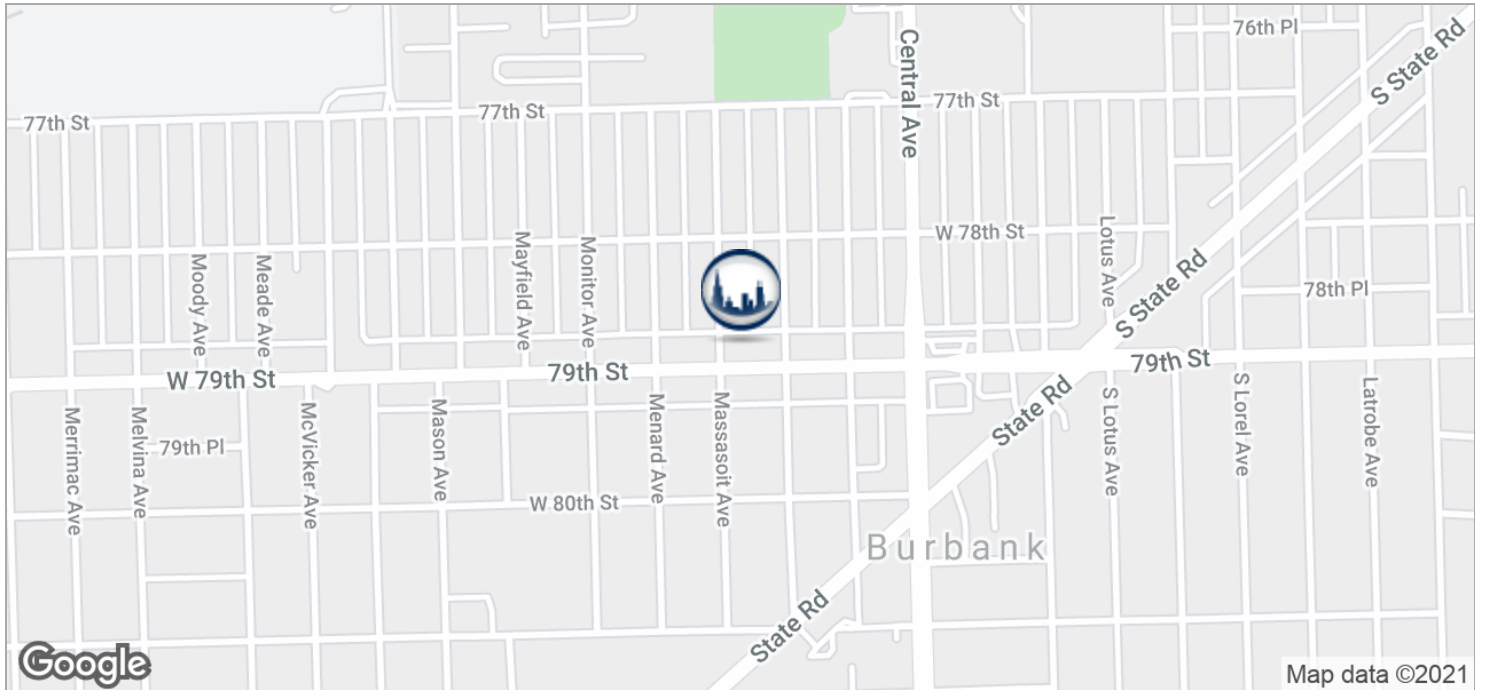




SHOWROOM/RETAIL BUILDING WITH DRIVE-IN WAREHOUSE IN BACK.  
5730 W. 79TH STREET, BURBANK, IL 60459



Location Maps



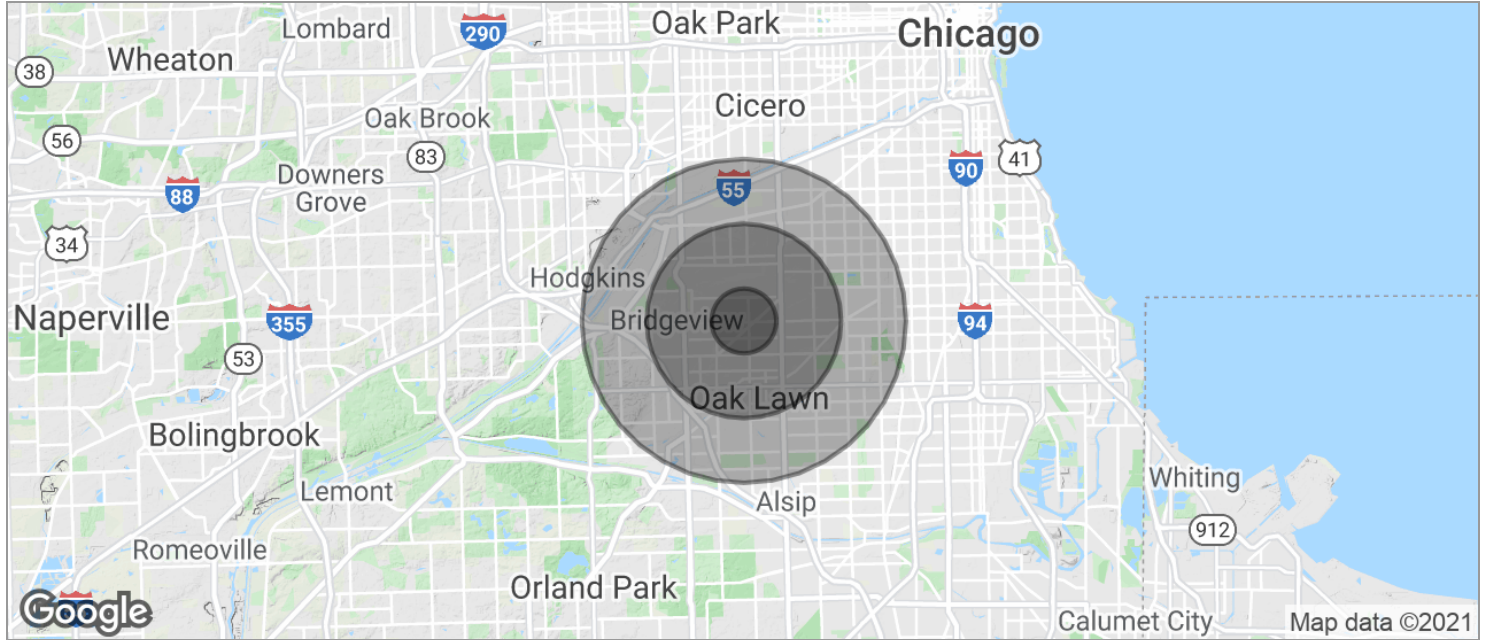
318 W Adams Street | Chicago, IL 60606 | 312.757.4800 |  
officespacechicago.com

Christopher Rogala  
chris@officespacechicago.com  
312.757.4800 x101

SHOWROOM/RETAIL BUILDING WITH DRIVE-IN WAREHOUSE IN BACK.  
 5730 W. 79TH STREET, BURBANK, IL 60459



Demographics Map



<b>POPULATION</b>	<b>1 MILE</b>	<b>3 MILES</b>	<b>5 MILES</b>
TOTAL POPULATION	14,640	161,830	500,093
MEDIAN AGE	36.2	36.0	34.9
MEDIAN AGE (MALE)	36.3	34.5	33.5
MEDIAN AGE (FEMALE)	36.1	37.8	36.4
<b>HOUSEHOLDS &amp; INCOME</b>	<b>1 MILE</b>	<b>3 MILES</b>	<b>5 MILES</b>
TOTAL HOUSEHOLDS	4,449	54,928	167,279
# OF PERSONS PER HH	3.3	2.9	3.0
AVERAGE HH INCOME	\$65,940	\$66,954	\$64,362
AVERAGE HOUSE VALUE	\$242,000	\$244,874	\$234,923

\* Demographic data derived from 2010 US Census