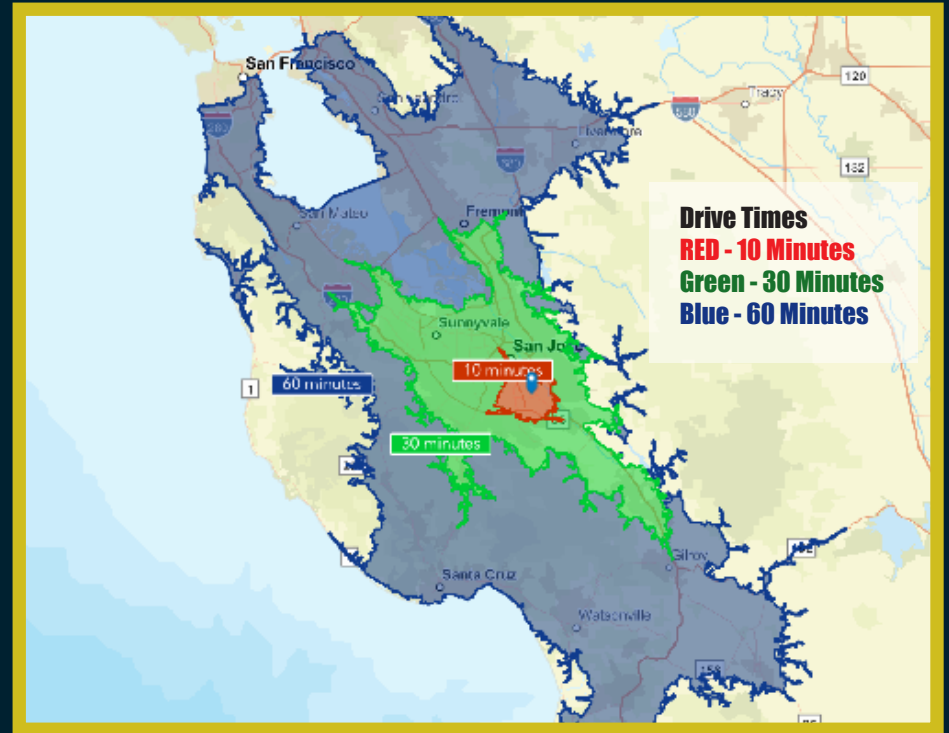


AVAILABLE FOR LEASE
26,250 SF BUILDING | +/- 5.87 ACRE INDUSTRIAL OUTDOOR STORAGE SITE



3200-3408 HILLCAP AVENUE
SAN JOSE, CA

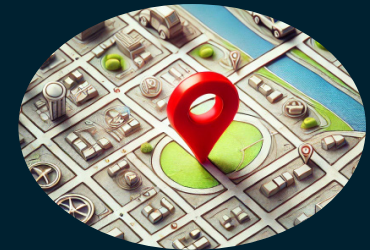




Site Details
 +/- 5.87 Acres
 10.2% FAR
 Land to Building Ratio: 9.74:1
 Heavy Industrial (MH)



Building Details
 26,250 SF Building
 Year Built: 1968
 Warehouse: 13,750 SF
 Office: 12,500 SF
 Clear Height: 22'
 Grade Level Doors: 4



Location Details
 CA-87: 2.2 miles
 E Capitol Expy: 2.6 miles
 HWY 101: 3 miles
 Santa Cruz: 32 miles
 Downtown San Jose: 6 miles
 Oakland: 40 miles
 San Francisco: 60 miles

ZONING INFORMATION

Jurisdiction: Santa Clara County
Zoning Description: MH - Heavy Industrial

MH Heavy Industrial. The purpose of the Heavy Industrial district, also known as the MH district, is to provide for essential heavy industrial and commercial uses that are likely to impact the surrounding area. This district should be located so as to minimize adverse effects on adjoining areas.



ZONING LINK



County of
Santa Clara

FOR MORE INFORMATION CALL



Frank Orrell
Partner
DRE # 01872831
Sequoia Realty Services
E: fo@seq-rs.com
C: (650) 302-4775



Anthony Kamm
Principal
DRE #01783456
Sequoia Realty Services
E: ak@seq-rs.com
C: (650) 888-3858

