

# RETAIL & RESTAURANT FOR LEASE

## 430 PARK AVENUE HIGHLAND PARK, IL

JAMESON.

STEVEN GOLDSTEIN  
SENIOR VICE PRESIDENT  
312.840.9002  
STEVE@CHICAGOBROKER.COM





# EXECUTIVE SUMMARY



## BUILDING SIZE

26,800 SF

## SPACE AVAILABLE

1,596 RSF (SUITE 103)

2,524 RSF (RESTAURANT SPACE)

## YEAR BUILT/RENOVATED

1920 / 2012

## CAM & INSURANCE

\$0.75/SF

## TAXES

\$4.18/SF

## FOR LEASE:

\$30.00 NNN SF/YR

## PROPERTY DESCRIPTION

The retail spaces at 430 Park Avenue are ideally situated in downtown Highland Park for a variety of exciting retail and restaurant concepts. The location is surrounded by great restaurants, shops and ample parking and a short walk to the metra stop. Ownership has great second generation restaurant and retail space available and is open to providing buildout and incentives for experienced operators.

Contact us today to find out more and schedule a site visit.

## AREA & TRANSPORTATION HIGHLIGHTS:

EASY ACCESS TO TO PUBLIC TRANSPORTATION WITH THE FOLLOWING TRANSIT STOPS NEARBY:

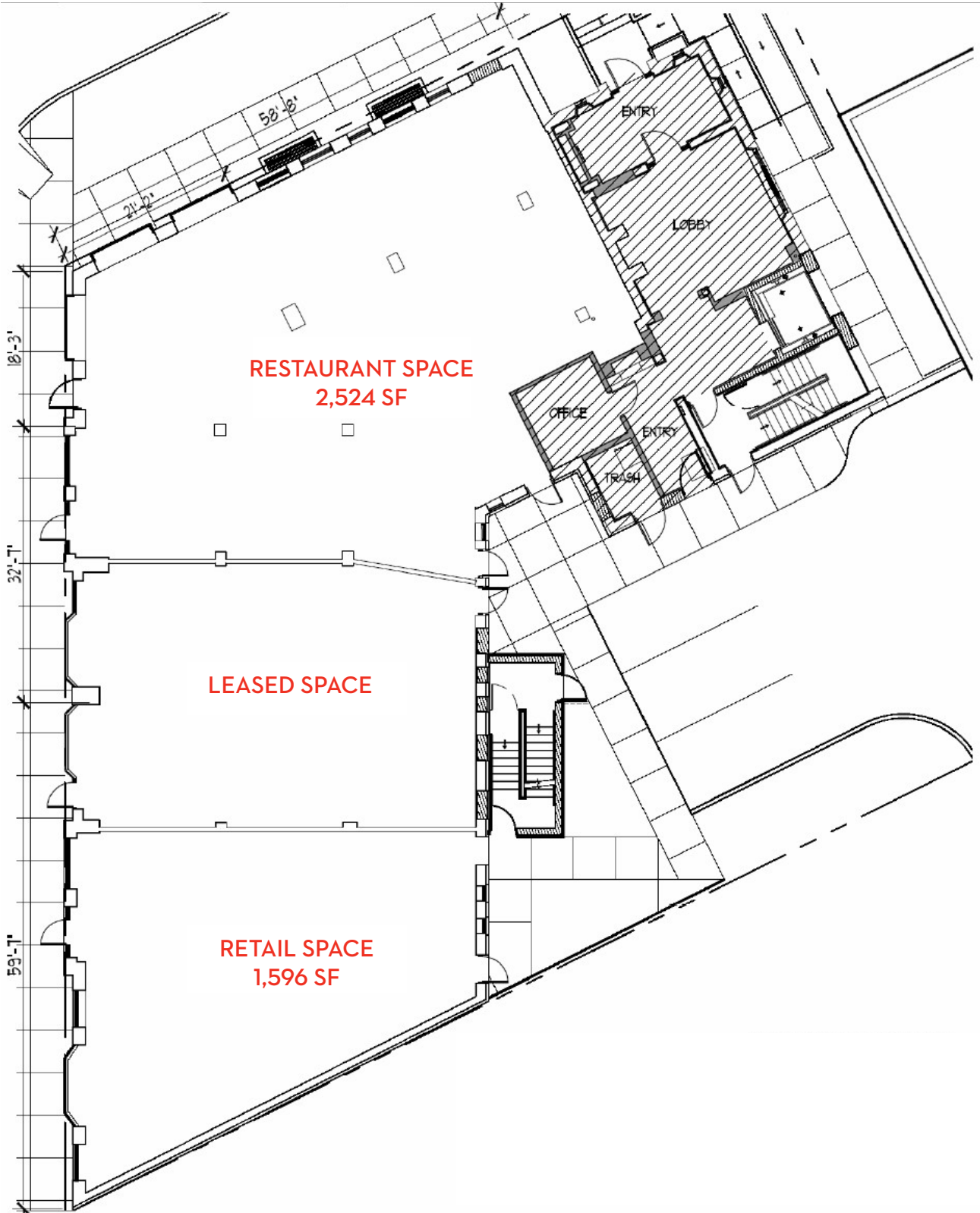
HIGHLAND PARK STATION (UNION PACIFIC NORTH LINE) - 1 MIN DRIVE

HIGHWOOD STATION (UNION PACIFIC NORTH LINE) - 3 MINUTE DRIVE

CHICAGO O'HARE INTERNATIONAL - 31 MINUTE DRIVE

CHICAGO MIDWAY INTERNATIONAL - 46 MINUTE DRIVE

AVAILABLE SUITES  
430 PARK AVENUE  
HIGHLAND PARK, IL

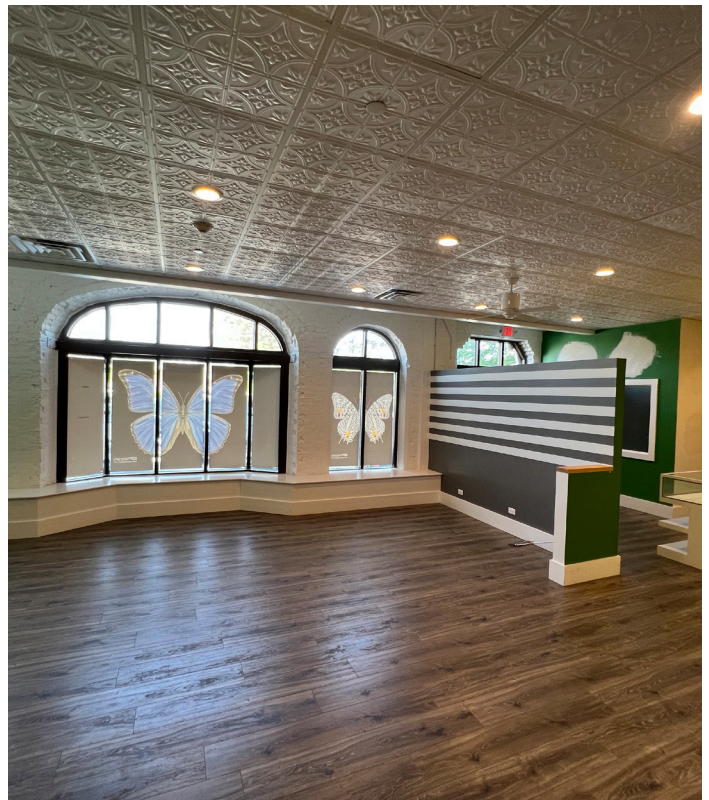




**INTERIOR PHOTOS - SUITE 103**

430 PARK AVENUE

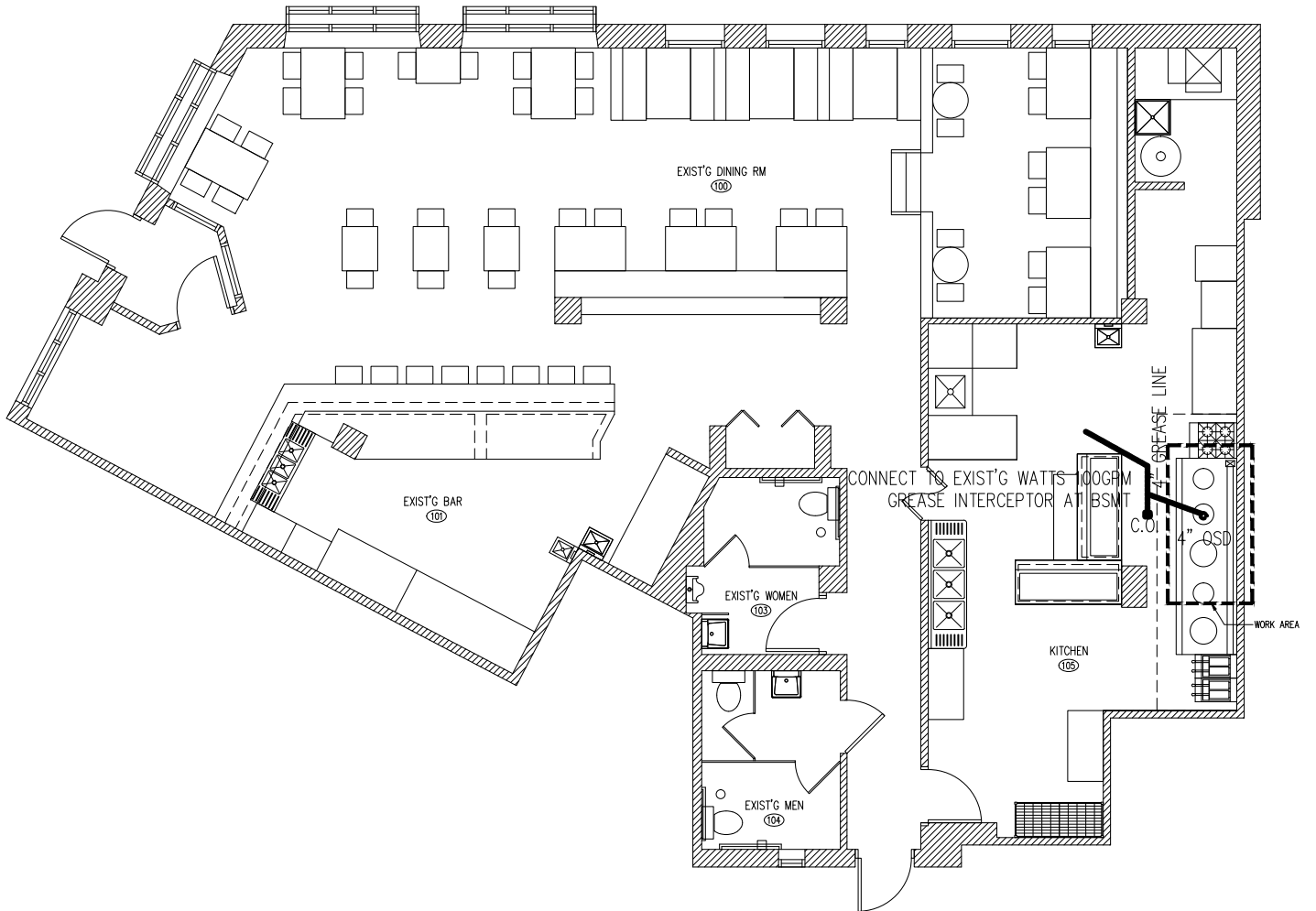
HIGHLAND PARK, IL



# EXISTING CONDITIONS RESTAURANT SPACE - 2,524 SF

430 PARK AVENUE

HIGHLAND PARK, IL





# INTERIOR PHOTOS - RESTAURANT SPACE

430 PARK AVENUE

HIGHLAND PARK, IL

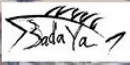




# RETAIL MAP

430 PARK AVENUE

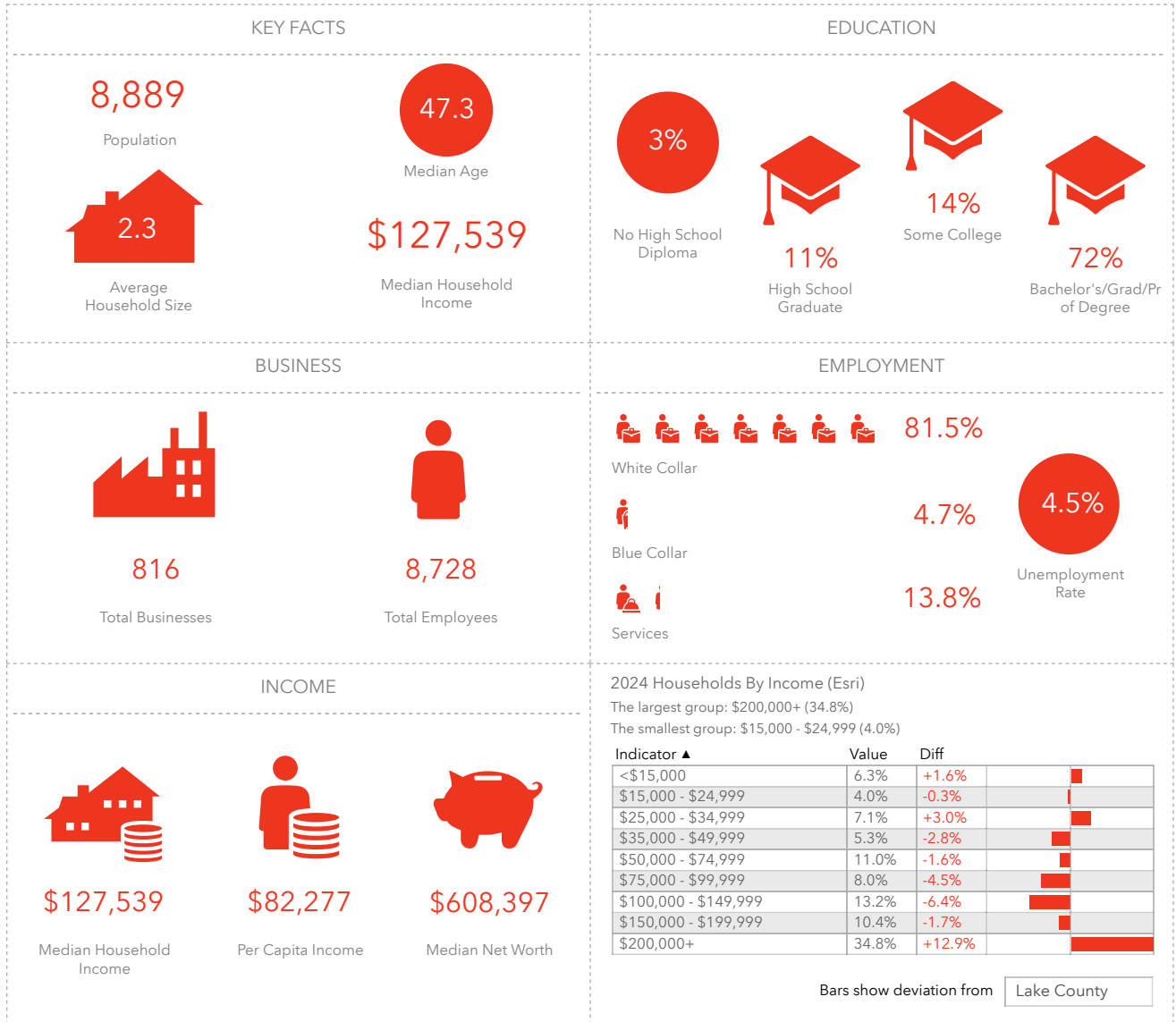
HIGHLAND PARK, IL





# DEMOGRAPHIC INSIGHTS

430 PARK AVENUE  
HIGHLAND PARK, IL



This infographic contains data provided by Esri, Esri-Data Axle. The vintage of the data is 2024, 2029.



JAMESON.

**STEVEN GOLDSTEIN**  
SENIOR VICE PRESIDENT

312.840.9002

STEVE@CHICAGOBROKER.COM