



Pacific Corporate Park

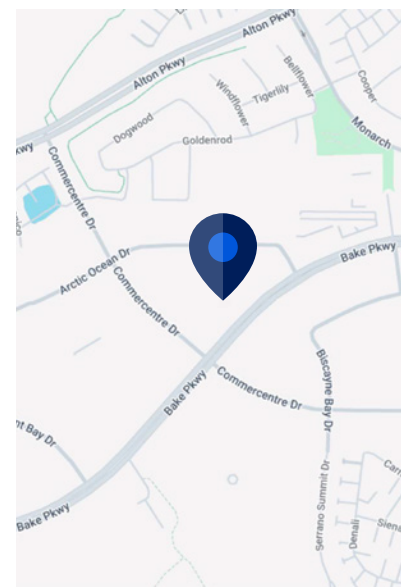
25371 Commercentre Dr.
Lake Forest, CA 92630

Space Profile:

Premises	Suite 200
Size/RSF	8,268 RSF
Rental Rate	\$2.50 FSG
Availability	Immediate
Term	TBD
Parking	4/1,000

Features:

- Creative space
- Double-door entry, exposed ceiling and glass lined offices
- 12 perimeter offices, 3 conference rooms, open kitchenette, large open area



Contact:

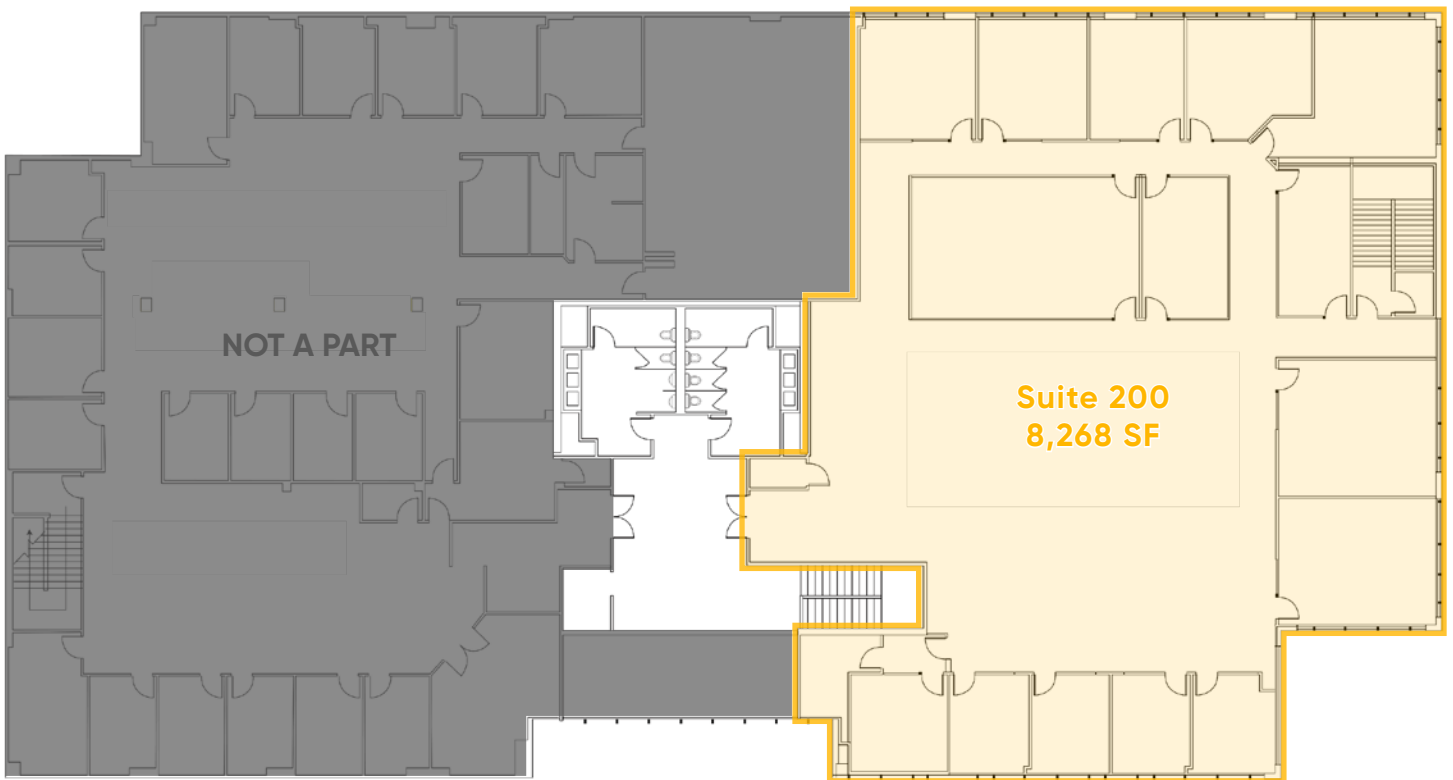
Isabella Zelinger
818.903.9274
izelinger@cresa.com
BRE# 02120763

660 Newport Center Drive
Suite 1260
Newport Beach, CA 92660



25371 Commercentre Drive

2nd Floor Plan





Pacific Corporate Park

25371 Commercentre Drive, Suite 200

