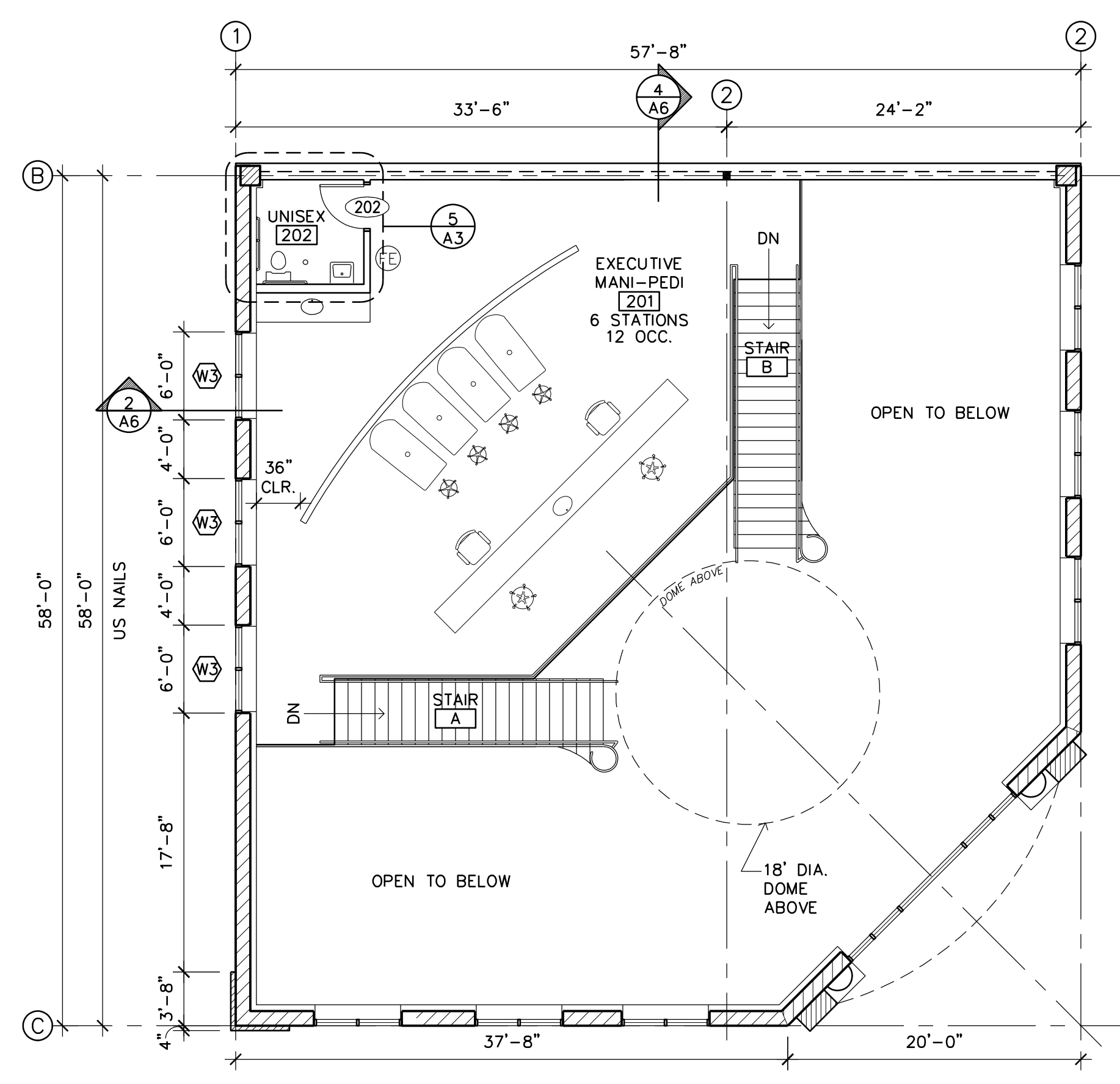
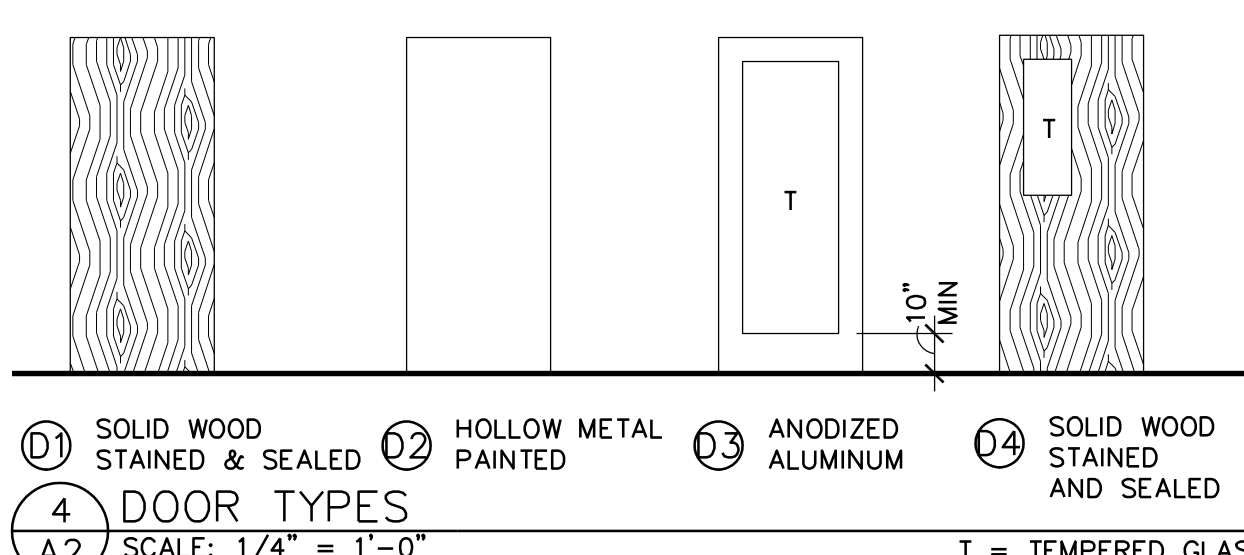


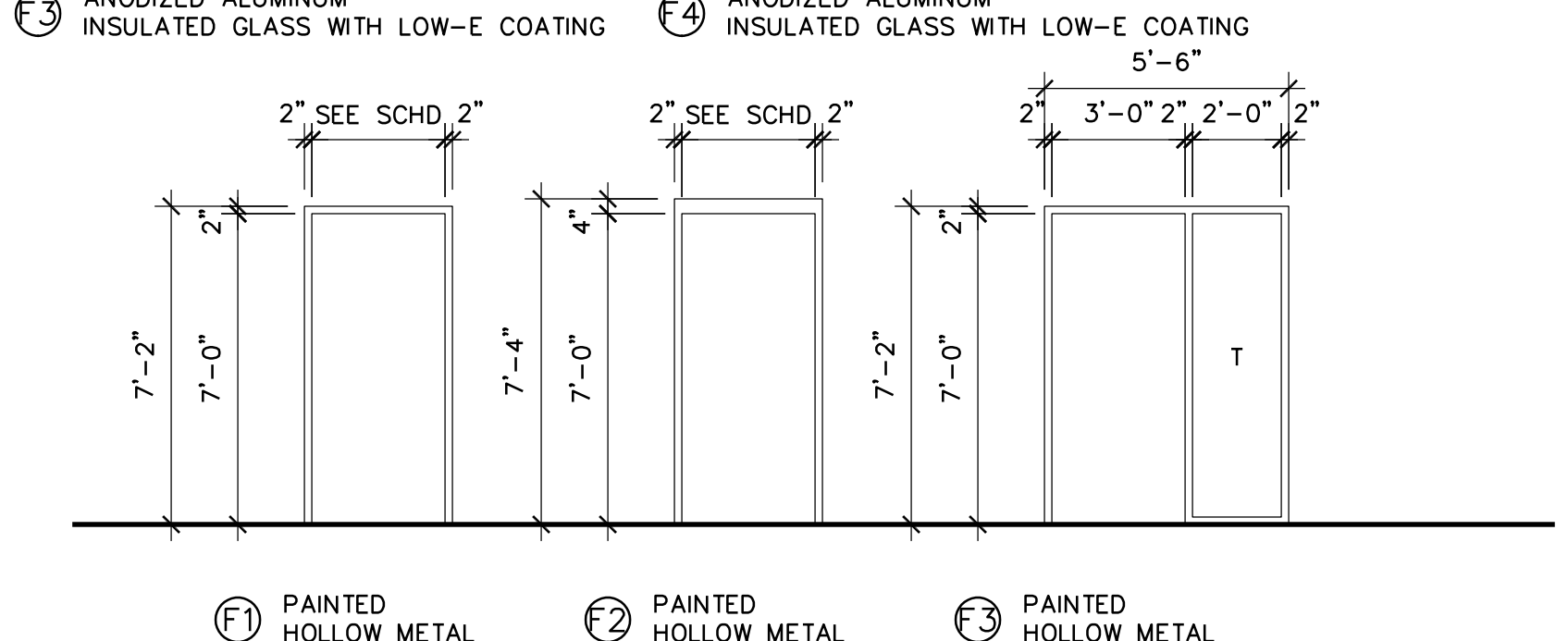
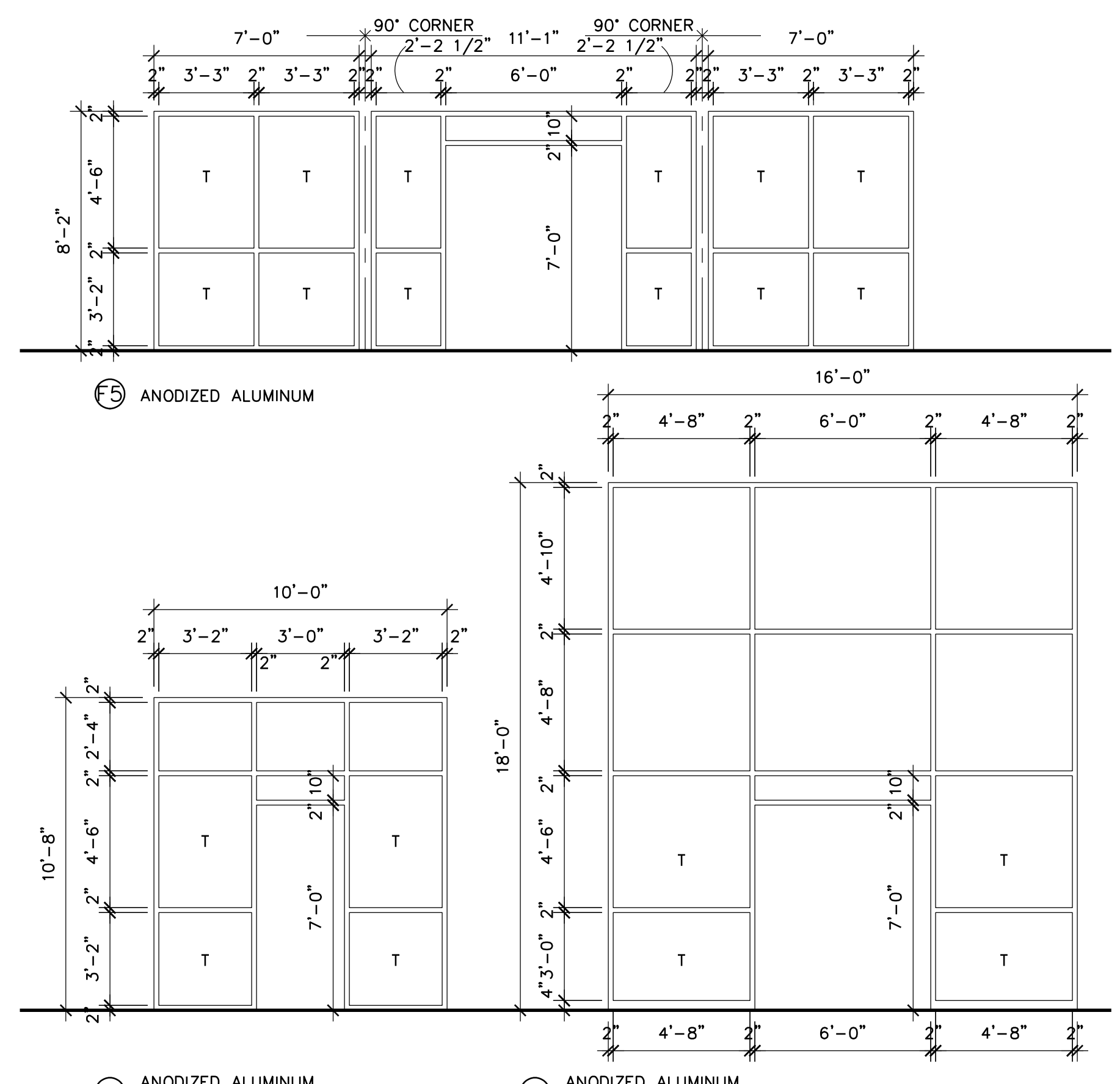
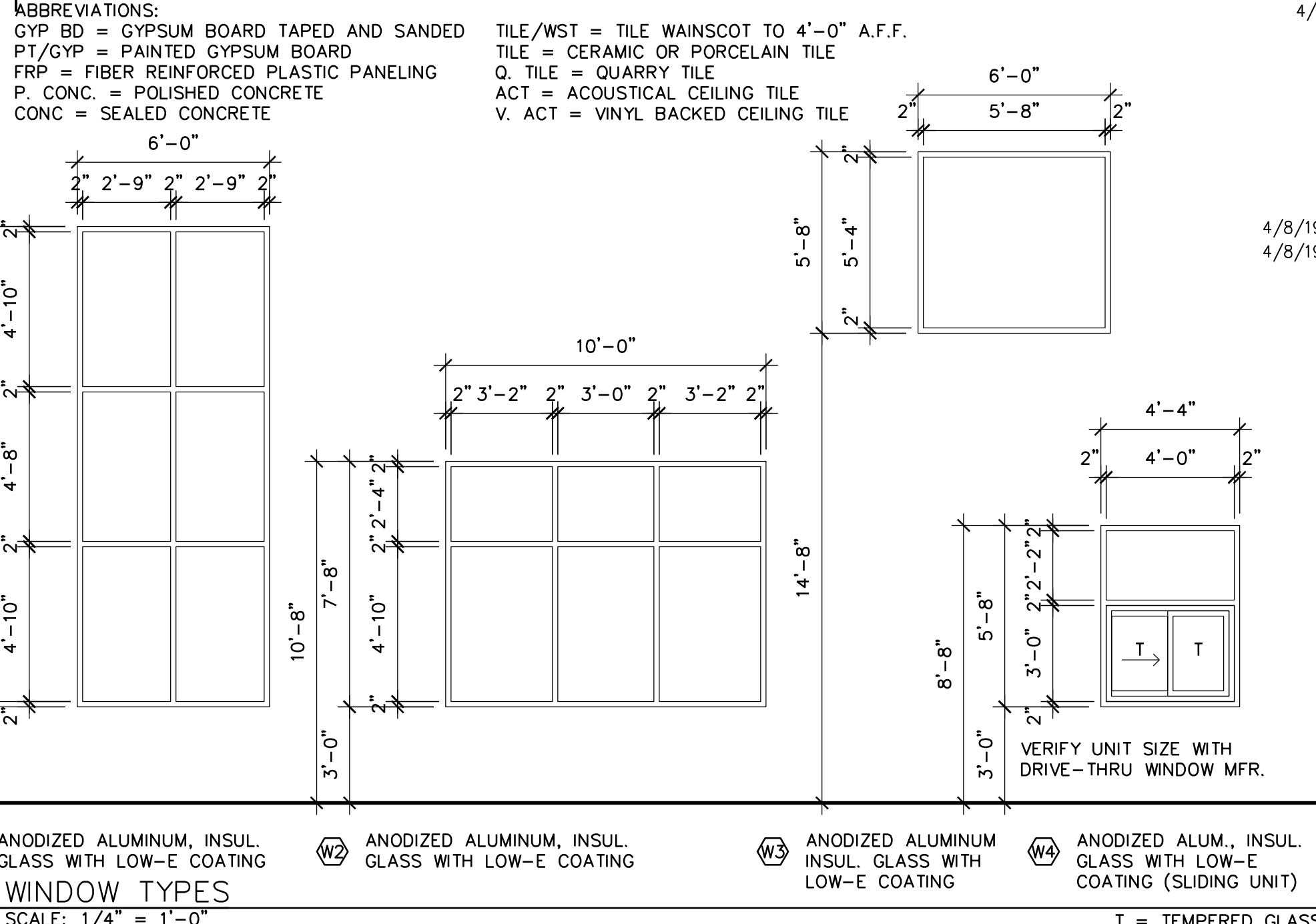
1 FLOOR PLAN
SCALE: 1/8" = 1'-0"
6,489 S.F.

- GENERAL NOTES:**
- ALL OCCUPANTS LISTED ARE FOR EXITING PER I.B.C. TABLE 1004.1.1.
 - ALL INTERIOR PARTITIONS TO BE 2x4 WOOD STUDS WITH 5/8" GYPSUM BOARD EACH SIDE, UNLESS NOTED OTHERWISE.
 - PROVIDE A MAXIMUM 36" HIGH BY MINIMUM 36" WIDE COUNTER AREA FOR HANDICAP ACCESSIBILITY AT RECEPTION DESKS AND SERVICE COUNTERS.
 - SEE STRUCTURAL DRAWINGS FOR SIZING, SPACING, AND REINFORCING OF BUILDING COMPONENTS.
 - PROVIDE AN APPROVED FIRE DEPARTMENT KEY BOX AS SPECIFIED BY FIRE MARSHAL.
 - VERIFY LOCATION AND QUANTITY OF ALL ILLUMINATED EXIT SIGNS, EMERGENCY EXIT LIGHTING AND FIRE EXTINGUISHERS WITH FIRE MARSHAL.
 - (E) = APPROXIMATE FIRE EXTINGUISHER LOCATION.
 - (E) = EXIT SIGNAGE - PROVIDE EMERGENCY BACK-UP POWER.
 - (E) = EMERGENCY LIGHTING - PROVIDE EMERGENCY BACK-UP POWER.
 - PROVIDE A FLOOR DRAIN WITHIN 3'-0" OF ANY WATER HEATERS, CONDENSING FURNACES, SERVICE SINKS, AND OR RESTROOM FIXTURES. VERIFY LOCATIONS WITH PLUMBING PLANS.



2 2nd FLOOR PLAN
SCALE: 1/8" = 1'-0"
1,016 S.F.

RM#	DESCRIPTION	FLOOR	BASE	N.WALL	E.WALL	S.WALL	W.WALL	CLG.	HGHT	REMARKS
101	VESTIBULE	TILE 1	TILE 1	PT/GYP	PT/GYP	PT/GYP	PT/GYP	ACT	8'-2"	-
102	RECEPTION	TILE 2	TILE 2	PT/GYP	PT/GYP	PT/GYP	PT/GYP	ACT	21'-0"	GYP BD DOME ABOVE
103	WAITING AREA	TILE 1	TILE 1	PT/GYP	PT/GYP	PT/GYP	PT/GYP	ACT	21'-0"	-
104	RETAIL AREA	TILE 1	TILE 1	PT/GYP	PT/GYP	PT/GYP	PT/GYP	ACT	21'-0"	-
105	VIP MANI-PEDI	TILE 2	TILE 2	PT/GYP	PT/GYP	PT/GYP	PT/GYP	ACT	9'-0"	-
106	WOMEN'S RESTROOM	TILE 2	TILE 2	TILE/WST	TILE/WST	TILE/WST	TILE/WST	ACT	9'-0"	-
107	MEN'S RESTROOM	TILE 2	TILE 2	TILE/WST	TILE/WST	TILE/WST	TILE/WST	ACT	9'-0"	-
108	MANI-PEDI	TILE 2	TILE 2	PT/GYP	PT/GYP	PT/GYP	PT/GYP	ACT	9'-0"	-
109	OFFICE	TILE 2	TILE 2	PT/GYP	PT/GYP	PT/GYP	PT/GYP	ACT	9'-0"	-
110	WAXING ROOM	TILE 2	TILE 2	PT/GYP	PT/GYP	PT/GYP	PT/GYP	ACT	9'-0"	-
111	WAXING ROOM	TILE 2	TILE 2	PT/GYP	PT/GYP	PT/GYP	PT/GYP	ACT	9'-0"	-
112	KIDS MANI-PEDI	TILE 1	TILE 1	PT/GYP	PT/GYP	PT/GYP	PT/GYP	ACT	21'-0"	-
113	MANI-PEDI	TILE 1	TILE 1	PT/GYP	PT/GYP	PT/GYP	PT/GYP	ACT	9'-0"	-
114	HALL	TILE 2	TILE 2	PT/GYP	PT/GYP	PT/GYP	PT/GYP	ACT	9'-0"	-
115	BREAK ROOM	TILE 2	TILE 2	PT/GYP	PT/GYP	PT/GYP	PT/GYP	ACT	9'-0"	-
116	DINING	TILE 3	TILE 3	PT/GYP	PT/GYP	PT/GYP	PT/GYP	ACT	12'-0"	-
117	BAR AREA	Q. TILE	Q. TILE	TILE/WST	-	-	TILE/WST	V. ACT	12'-0"	-
118	HALL	TILE 3	TILE 3	PT/GYP	PT/GYP	PT/GYP	PT/GYP	PT/GYP	12'-0"	-
119	MECHANICAL ROOM	CONC	-	GYP BD	GYP BD	GYP BD	GYP BD	ACT	9'-0"	-
120	KITCHEN	Q. TILE	Q. TILE	FRP	FRP	FRP	FRP	V. ACT	9'-0"	-
121	DRY STORAGE	Q. TILE	Q. TILE	FRP	FRP	FRP	FRP	V. ACT	9'-0"	-
122	PRIVATE SEATING	TILE 3	TILE 3	PT/GYP	PT/GYP	PT/GYP	PT/GYP	ACT	11'-0"	-
201	VIP MANI-PEDI	TILE 2	TILE 2	PT/GYP	PT/GYP	PT/GYP	PT/GYP	ACT	9'-0"	-
202	UNISEX RESTROOM	TILE 2	TILE 2	TILE/WST	TILE/WST	TILE/WST	TILE/WST	ACT	9'-0"	-



3 DOOR FRAME TYPES
SCALE: 1/4" = 1'-0"

DR #	DOOR SIZE	THICK	DOOR	FRAME	REMARKS
101A	(2) 3'-0"x7'-0"	1 3/4"	D3	F5	INSULATING GLASS
101B	(2) 3'-0"x7'-0"	1 3/4"	D3	F6	-
106	3'-0"x7'-0"	1 3/4"	D1	F1	-
107	3'-0"x7'-0"	1 3/4"	D1	F1	-
108	3'-0"x7'-0"	1 3/4"	D2	F2	INSULATED
109	3'-0"x7'-0"	1 3/4"	D1	F1	-
110	3'-0"x7'-0"	1 3/4"	D1	F1	-
111	3'-0"x7'-0"	1 3/4"	D1	F1	-
114A	3'-0"x7'-0"	1 3/4"	D4	F1	DOUBLE ACTING
114B	3'-0"x7'-0"	1 3/4"	D4	F1	DOUBLE ACTING
115	3'-0"x7'-0"	1 3/4"	D1	F1	-
116A	3'-0"x7'-0"	1 3/4"	D3	F4	INSULATING GLASS
116B	3'-0"x7'-0"	1 3/4"	D3	F4	INSULATING GLASS
117	3'-0"x7'-0"	1 3/4"	D4	F1	DOUBLE ACTING
118	3'-0"x7'-0"	1 3/4"	D2	F2	INSULATED
119	3'-0"x7'-0"	1 3/4"	D2	F2	INSULATED
120A	4'-0"x7'-0"	1 3/4"	D2	F2	INSULATED
120B	3'-0"x7'-0"	1 3/4"	D4	F1	DOUBLE ACTING
122A	3'-0"x7'-0"	1 3/4"	D1	F3	-
122B	3'-0"x7'-0"	1 3/4"	D1	F3	-
A	3'-0"x7'-0"	1 3/4"	D1	F1	-
B	3'-0"x7'-0"	1 3/4"	D1	F1	-
202	3'-0"x7'-0"	1 3/4"	D1	F1	-

- NOTES:**
- ALL DOOR HARDWARE TO BE SPECIFIED & PROVIDED BY CONTRACTOR
 - ALL EXIT HARDWARE SHALL NOT REQUIRE TIGHT GRASPING, PINCHING, OR TWISTING OF THE WRIST. MOUNT HARDWARE BETWEEN 34"-48" (ANSI A117.1-404.2.6)
 - PROVIDE A KNOX BRAND FIRE DEPARTMENT KEY BOX AS SPECIFIED BY THE FIRE MARSHAL
 - THE MAIN EXIT IS ALLOWED TO HAVE A KEYED LOCK PROVIDED THAT THE LOCKING DEVICE IS READILY DISTINGUISHABLE AS LOCKED AND A SIGN WITH 1" CONTRASTING LETTERS IS POSTED ON THE EGRESS SIDE STATING: 'THIS DOOR TO REMAIN UNLOCKED WHEN BUILDING IS OCCUPIED'. (IBC 1008.1.9.3)

- KIDS MANI-PEDI 111 ADDED
- REVISED FIXTURE LAYOUT
- REVISED WAX 110, OFFICE 109, WOMEN 106, MEN 107
- VIP MANI-PEDI 105 ADDED
- FLOOR FINISH TRANSITION AT RECEPTION 102
- TASTE OF SAIGON LAYOUT RECONFIGURED
- SCHEDULES UPDATED
- DOOR TYPES UPDATED
- UPDATED FOR COORDINATION WITH REVISED EXTERIOR DESIGN
- REVISED FRAME AND WINDOW TYPES
- UPDATED (E) LOCATIONS
- SEATING AT DINING 114 ADDED
- FUTURE STATIONS ADDED
- OCCUPANT LOAD UPDATED
- DRINKING FOUNTAIN ADDED AT TASTE OF SAIGON REVISED
- US NAILS FIXTURES UPDATED
- TASTE OF SAIGON FLOOR PLAN REVISION
- UPDATE ROOM NUMBERS
- NEW RESTROOM GROUP AND COMMON AREA
- NEW FRAME TYPE
- UPDATE DOOR SCHEDULE AND ROOM SCHEDULE
- UPDATE S.F. AND OCC.
- REVISE KIDS MANI-PEDI
- ADD PLUMBING WALL BEHIND PEDICURE STATIONS
- REVISE DOORS 108, 118, 119

LAMPERT ARCHITECTS
420 Summit Avenue
St. Paul, MN 55102
Phone: 763.755.1211 Fax: 763.757.2849
lamper@lamper-arch.com

ARCHITECT CERTIFICATION:
I HEREBY CERTIFY THAT THIS PLAN, SPECIFICATION OR REPORT WAS PREPARED BY ME OR UNDER MY DIRECT SUPERVISION AND THAT I AM A DULY LICENSED ARCHITECT UNDER THE LAWS OF THE STATE OF MINNESOTA.

LEONARD LAMPERT
PRINT NAME
13669
LICENSE NO.
5/17/19
DATE

(763) 784-1950
FAX 784-9707

STONE CONSTRUCTION, INC.
2181 - 107th LANE N.E.
BLAINE, MINNESOTA 55434

US NAIL SALON
Blaine, Minnesota

Copyright 2019
Leonard Lampert Architects Inc.

Project Designer: L. SCHMIDT
Drawn By: LLS
Checked By: LL

Revisions	DATE	ISSUE
	7/31/17	ISSUE
	4/5/18	CITY COMMENTS
	4/16/18	CITY COMMENTS
	5/1/18	CITY COMMENTS
	5/17/19	CURRENT REVISION

FLOOR PLAN
Sheet Number

A2

Project No. 170314-1