

PROPERTY DETAILS

272 SOUTH MAIN STREET, SALT LAKE CITY, UT

- Under New Ownership
- Approximately 5,849 SF available - would consider demising
- Ideal for restaurant or bar
- Balcony/mezzanine level for additional seating
- Generous TIA available for qualified tenant
- Gallivan TRAX station right in front of the building
- Parking garage next door or within 1 block
- CAM estimated at \$8.00 psf

2023 DEMOS

EST. POPULATION



1 MILE » 25,518
3 MILE » 140,454
5 MILE » 234,181

EST. HOUSEHOLDS



1 MILE » 15,566
3 MILE » 62,972
5 MILE » 98,799

EST. MEDIAN HH INCOME



1 MILE » \$72,621
3 MILE » \$78,297
5 MILE » \$83,517



MOUNTAIN WEST
COMMERCIAL REAL ESTATE

JOSH VANCE, CCIM

jvance@mtwest.com
direct 801.456.8857
[View Profile](#)

J.R. HOWA

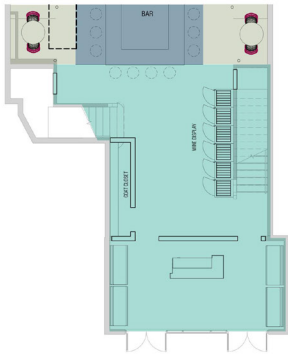
jhowa@mtwest.com
direct 801.578.5545
[View Profile](#)

JEFF HARRISON

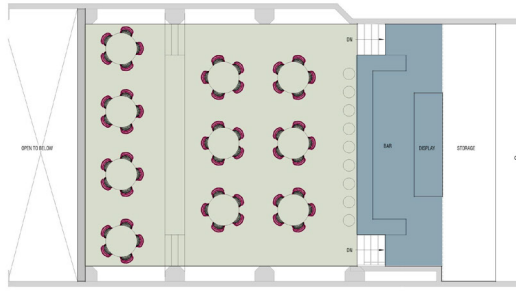
jeff.harrison@colliers.com
direct +1 801 453 6862
6440 S. Millrock Drive, St 500
Salt Lake City, Utah 84121

**FULL SERVICE
COMMERCIAL REAL ESTATE**

312 East South Temple
Salt Lake City, Utah 84111
Office 801.456.8800
www.mtnwest.com



2 ENTRY OPTION 2

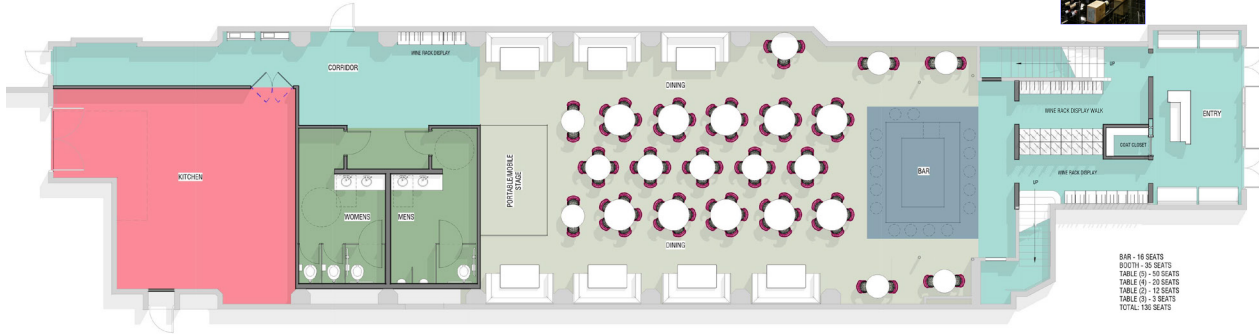


1A BALCONY - OPTION 1

BAR - 9 SEATS
TABLE (4) - 50 SEATS
TOTAL: 59 SEATS

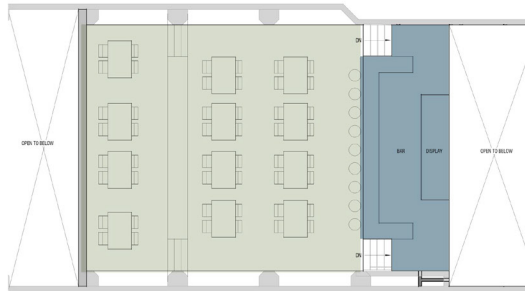
AREAS

- BAR
- DINING AND STAGE
- ENTRY AND CIRCULATION
- KITCHEN
- RESTROOMS



1 RESTAURANT - OPTION 1

BAR - 16 SEATS
BOOTH - 30 SEATS
TABLE (3) - 30 SEATS
TABLE (4) - 20 SEATS
TABLE (2) - 12 SEATS
TABLE (3) - 3 SEATS
TOTAL: 136 SEATS

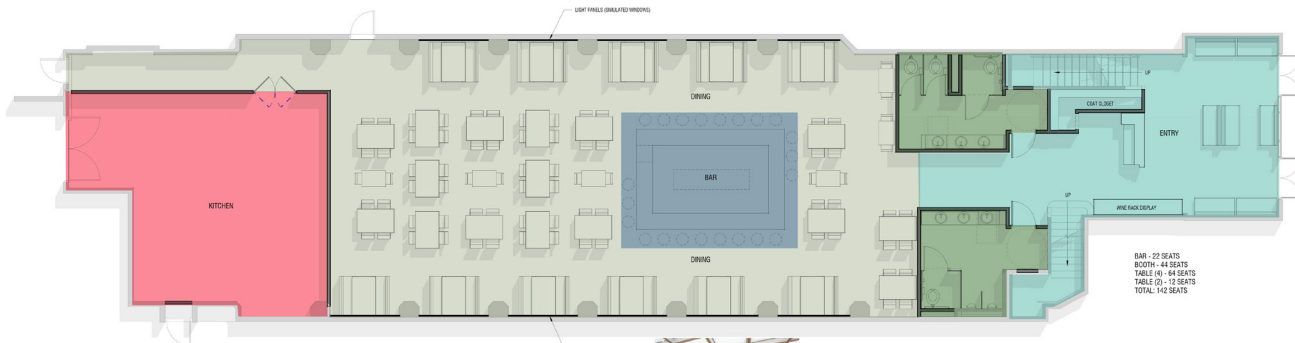


2A BALCONY - OPTION 2

BAR - 9 SEATS
TABLE (4) - 48 SEATS
TOTAL: 57 SEATS

AREAS

- BAR
- DINING AND STAGE
- ENTRY AND CIRCULATION
- KITCHEN
- RESTROOMS



2 RESTAURANT - OPTION 2

BAR - 22 SEATS
BOOTH - 44 SEATS
TABLE (4) - 64 SEATS
TABLE (2) - 12 SEATS
TOTAL: 142 SEATS



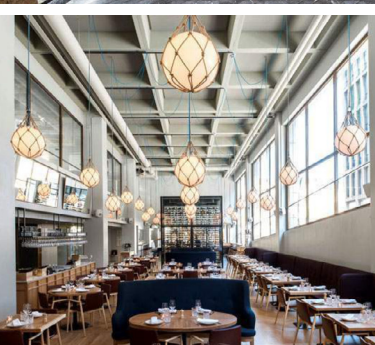
MOUNTAIN WEST
COMMERCIAL REAL ESTATE

JOSH VANCE, CCIM
jvance@mtwest.com
direct 801.456.8857
[View Profile](#)

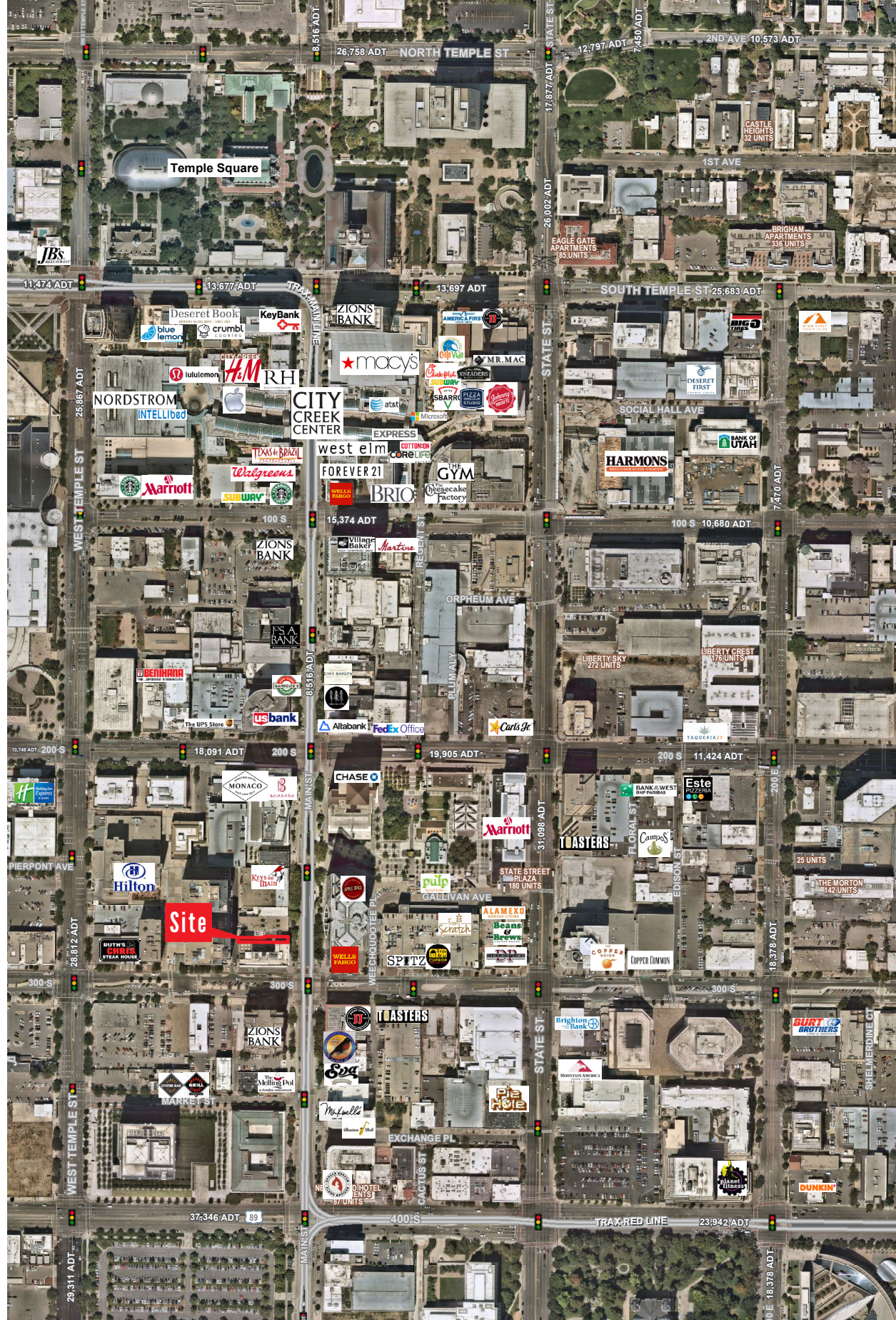
J.R. HOWA
jhowa@mtwest.com
direct 801.578.5545
[View Profile](#)

JEFF HARRISON
jeff.harrison@colliers.com
direct +1 801 453 6862
6440 S. Millrock Drive, St 500
Salt Lake City, Utah 84121

**FULL SERVICE
COMMERCIAL REAL ESTATE**
312 East South Temple
Salt Lake City, Utah 84111
Office 801.456.8800
www.mtnwest.com



NOT ACTUAL SPACE
FOR DESIGN
PURPOSES ONLY



MOUNTAIN WEST
COMMERCIAL REAL ESTATE

JOSH VANCE, CCIM

jvance@mtwest.com
direct 801.456.8857

[View Profile](#)

J.R. HOWA

jhowa@mtwest.com
direct 801.578.5545

[View Profile](#)

JEFF HARRISON

jeff.harrison@colliers.com
direct +1 801 453 6862
6440 S. Millrock Drive, St 500
Salt Lake City, Utah 84121

**FULL SERVICE
COMMERCIAL REAL ESTATE**

312 East South Temple
Salt Lake City, Utah 84111
Office 801.456.8800
www.mtnwest.com