

4900 SOUTH BROAD STREET

THE COMMANDANT'S BUILDING



EXCLUSIVELY
REPRESENTED BY
THE FLYNN COMPANY

5,606 SF at THE NAVY YARD

AVAILABLE FOR LEASE

PROPERTY HIGHLIGHTS



33,369 SF 3-story office building



5,606 SF Available in 2 suites



High-end Historic Renovation throughout



Free surface parking adjacent to the Property



Free Express Shuttles to Center City & AT&T Station (Broad Street Subway)
and direct access to SEPTA Bus Route 17



Move-in ready suites with furniture available

MICHAEL GALLAGHER
MGALLAGHER@FLYNNCO.COM
215-561-6565 X 151

BRENDAN FLYNN
BFLYNN@FLYNNCO.COM
215-561-6565 X 152

The
Flynn
Company

THE FLYNN COMPANY

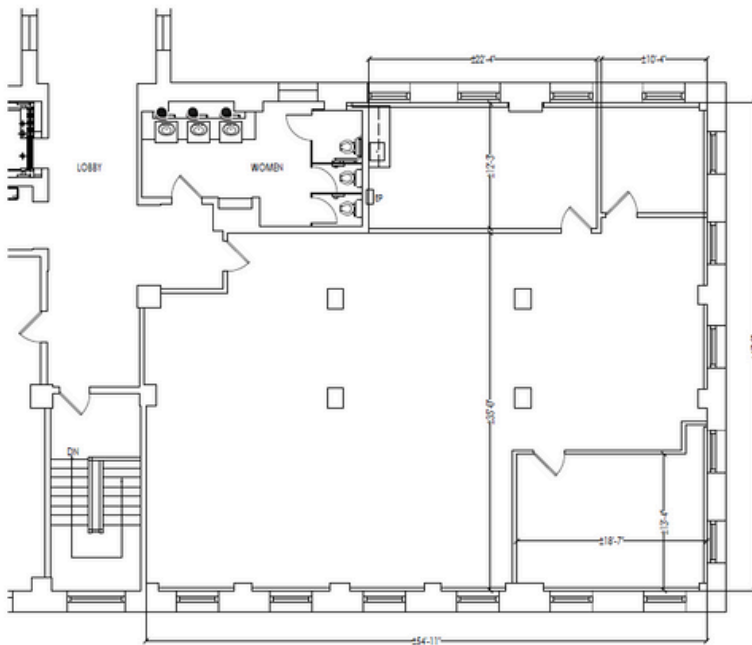
WWW.FLYNNCO.COM | 1621 WOOD STREET, PHILADELPHIA, PA 19103 | 215.561.6565

AVAILABILITIES & FLOOR PLANS

Suite	Space Available (SF)
1 st Floor	2,784 SF
3 rd Floor	2,822 SF
Total Available	5,606 SF



3rd Floor Existing Conditions Plan



PROPERTY PHOTOS



CONFERENCE ROOM- HISTORIC VAULT



CONFERENCE ROOM- BUILT IN KITCHENETTE



CONFERENCE ROOM



AMPLE NATURAL LIGHT



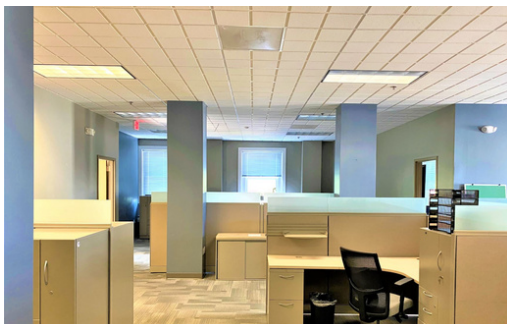
BUILT IN FIREPLACE



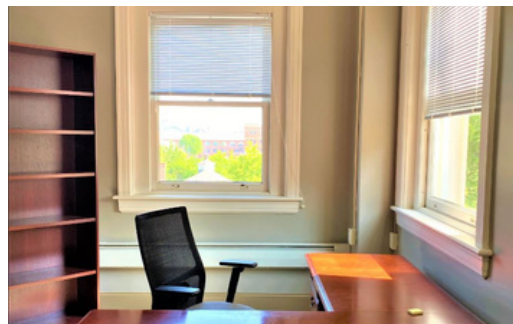
SUITE 320- PLUG & PLAY SOLUTION



SUITE 320- KITCHEN



SUITE 320- BULLPEN AREA



SUITE 310- CORNER OFFICE



SUITE 310- PRIVATE WINDOWED OFFICE



SUITE 300- FURNITURE AVAILABLE



SUITE 300- OPEN LAYOUT

4900 S BROAD STREET | THE COMMANDANT'S BUILDING

5,606 SF AT THE NAVY YARD | AVAILABLE FOR LEASE



For More Information Please Contact:

MICHAEL GALLAGHER
MGALLAGHER@FLYNNCO.COM
215-561-6565 X 151

BRENDAN FLYNN
BFLYNN@FLYNNCO.COM
215-561-6565 X 152

THE FLYNN COMPANY

WWW.FLYNNCO.COM | 1621 WOOD STREET, PHILADELPHIA, PA 19103 | 215.561.6565