



For Lease | 8432 Rovana Circle, Sacramento, CA

**±13,500 SF Available**

**Tommy O. Ponder, SIOR**

Executive Vice President  
+1 916 563 3005  
tommy.ponder@colliers.com  
CA Lic. 01431506

**Spencer Bones**

Vice President  
+1 916 830 2628  
spencer.bones@colliers.com  
CA Lic. 02014924

**George Vrame, SIOR**

Vice President  
+1 916 563 3041  
george.vrame@colliers.com  
CA Lic. 02028936

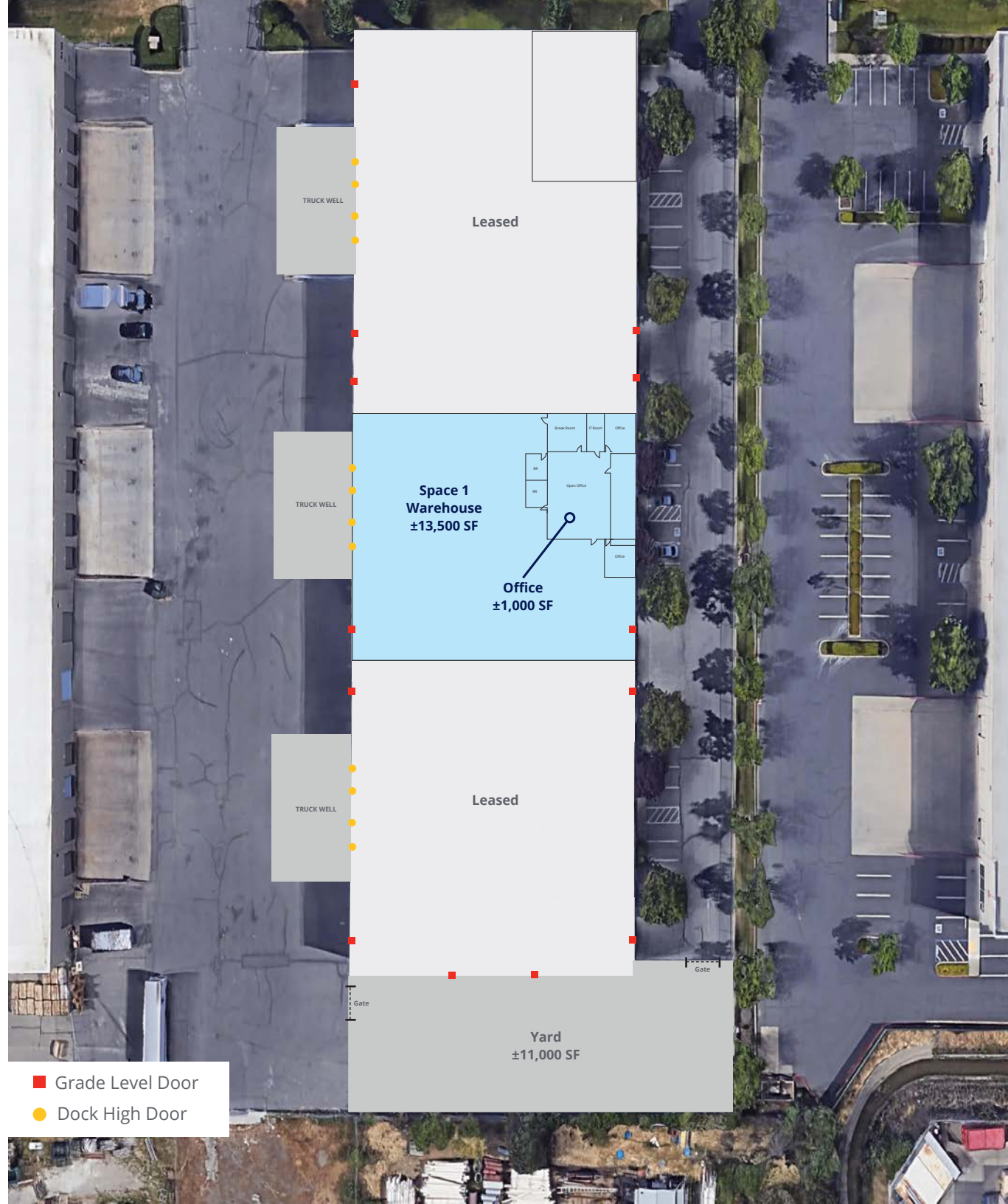


# Property Details

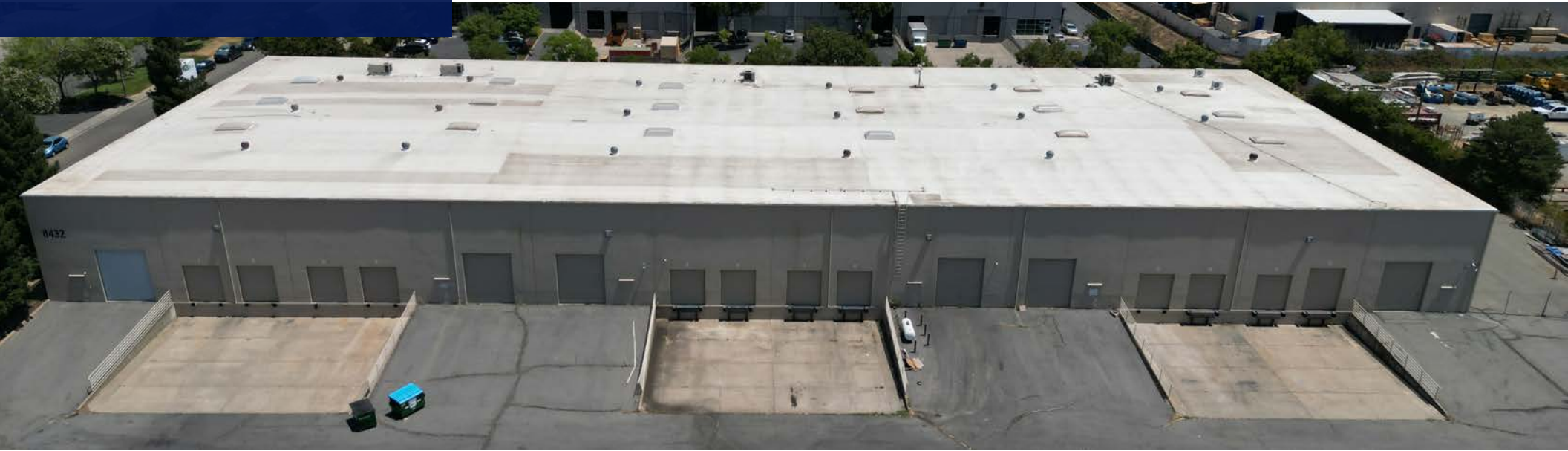
Total Building Area	±54,000 SF
Land Area	±2.00 acres
APN	064-0010-085
Zoning	M-2S
Year Built	1991
Construction	Concrete Tilt-Up
Clear Height	26' - 28'
Sprinkler	Yes
Power	800A / 277-480V / 3p Heavy

## Available

<b>Space 1</b>	<b>±13,500 SF</b>
Office	±1,000 SF
Dock Doors	Four (4)
Grade Level	Two (2)



# Property Photos



This document/email has been prepared by Colliers for advertising and general information only. Colliers makes no guarantees, representations or warranties of any kind, expressed or implied, regarding the information including, but not limited to, warranties of content, accuracy and reliability. Any interested party should undertake their own inquiries as to the accuracy of the information. Colliers excludes unequivocally all inferred or implied terms, conditions and warranties arising out of this document and excludes all liability for loss and damages arising there from. This publication is the copyrighted property of Colliers and /or its licensor(s). © 2024. All rights reserved. This communication is not intended to cause or induce breach of an existing listing agreement.

# Location Overview



**Tommy O. Ponder, SIOR**  
Executive Vice President  
+1 916 563 3005  
tommy.ponder@colliers.com  
CA Lic. 01431506

**Spencer Bones**  
Vice President  
+1 916 830 2628  
spencer.bones@colliers.com  
CA Lic. 02014924

**George Vrame, SIOR**  
Vice President  
+1 916 563 3041  
george.vrame@colliers.com  
CA Lic. 02028936

