

The logo for VANTIS, featuring the word "VANTIS" in white, bold, uppercase letters inside a green rectangular box.

VANTIS

COMMERCIAL REAL ESTATE

A photograph of a large, flat, green field, likely a vacant development site. In the background, there is a row of tall corn plants and a clear blue sky. A utility pole is visible on the right side. The field is partially obscured by a green diagonal overlay on the right side.

FOR SALE Vacant Development Land

SD HWY 15
Wilmot, SD 57279

OFFERING **MEMORANDUM**

Madison Hulscher
Broker Associate
605.520.6365
madison@vantiscommercial.com

For Sale

For Sale: Vacant Development Land

SD HWY 15
Wilmot, SD 57279

Property Features

Size: 22,500 +/- SF
Price: \$55,000
Zoning: Commercial

Highlights

- Located along SD Highway 15
- Located 7 miles east of I-29 and 9 miles west of Big Stone Lake
- Property needs to be annexed - city to support commercial zoning
- Versatile development opportunity for offices, small retail, industrial shops, etc.
- Located amid frequent recreational hunting and fishing activity
- Local businesses include Sinclair Gas Station, RC Technologies, Minnwest Bank, The Grind Coffee+Café, Route 15 Body Works, CHS, Wilmot Lumber Yard, Whetstone Ag Supply, Wilmot Foods, and Jean's Bridal.



VANTIS

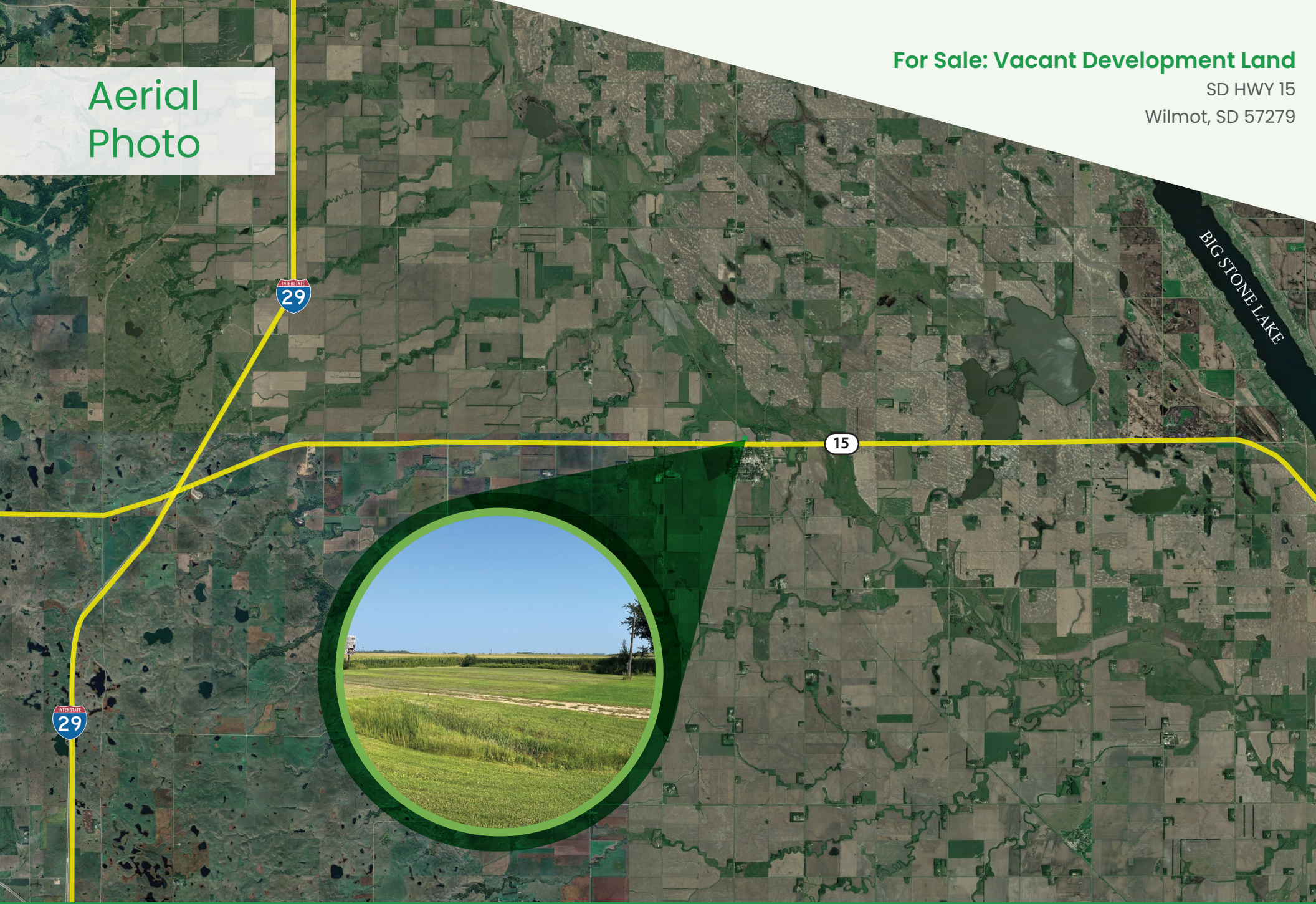
Madison Hulscher
Broker Associate
605.520.6365
madison@vantiscommercial.com

For Sale: Vacant Development Land

SD HWY 15

Wilmot, SD 57279

Aerial
Photo



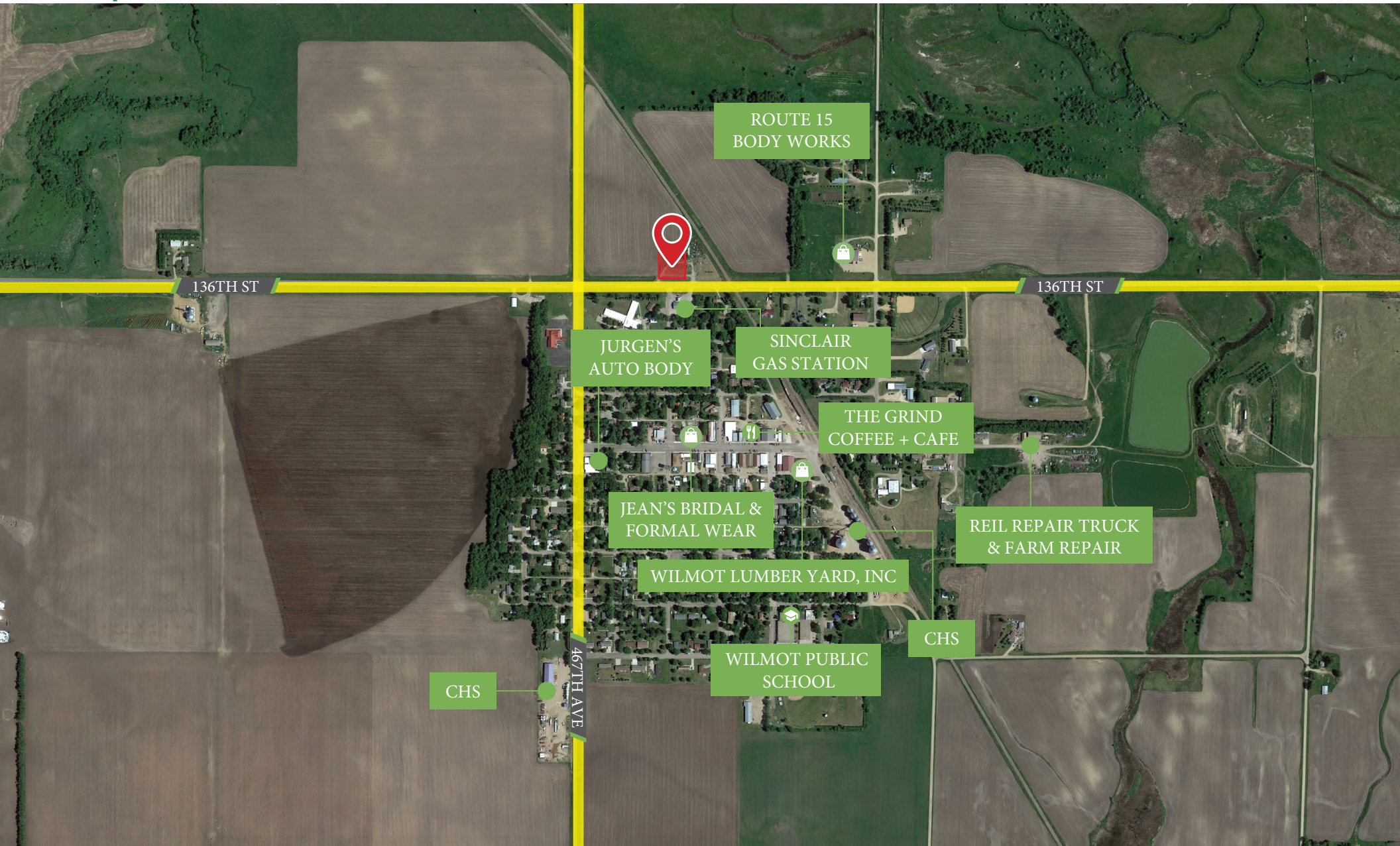
VANTIS

Madison Hulscher
Broker Associate
605.520.6365
madison@vantiscommercial.com

Market Overview Map

For Sale: Vacant Development Land

SD HWY 15 | Wilmot, SD 57279

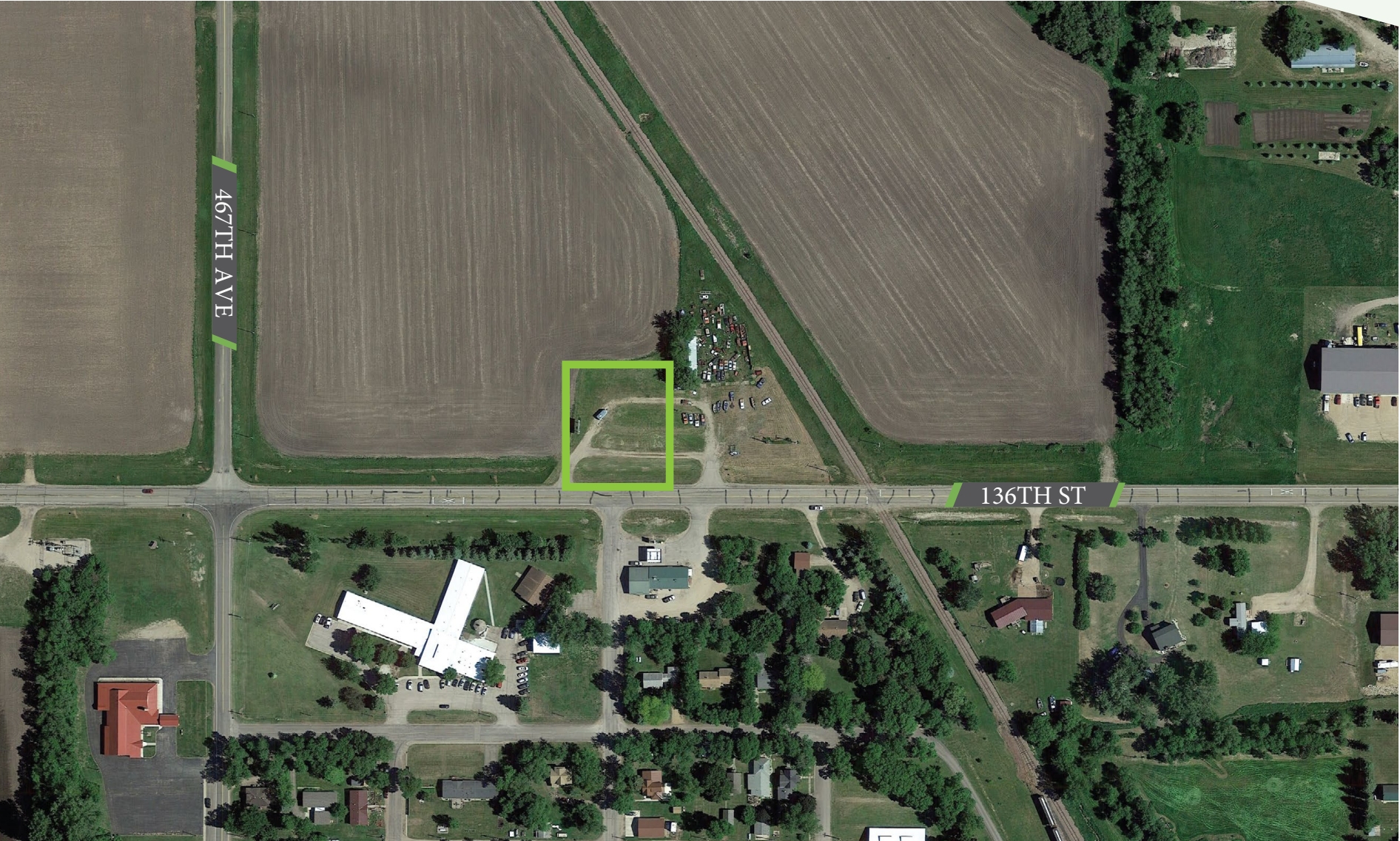


Madison Hulscher
Broker Associate
605.520.6365
madison@vantiscommercial.com

Site Plan

For Sale: Vacant Development Land

SD HWY 15
Wilmot, SD 57279



Madison Hulscher
Broker Associate
605.520.6365
madison@vantiscommercial.com