

BUILD TO SUIT

MEDICAL OFFICE



14555 C HAZEL DELL PKWY, CARMEL, IN 46033



## PROPERTY HIGHLIGHTS

- Class A medical office / general office
- Convenient curbside parking
- Excellent access from 146th Street & Hazel Dell Parkway

## OFFERING SUMMARY

Lease Rate:	TBD
Available SF:	Up to 10,125 SF



BRADLEY COMPANY TOM OSBORNE, SIOR

310 E. 96th St., Suite 100  
Indianapolis, IN 46240  
317.663.6000

Principal  
317.258.0179  
tosborne@bradleyco.com



BRADLEYCO.COM



# ADDITIONAL PHOTOS

14555 C HAZEL DELL PKWY, CARMEL, IN 46033

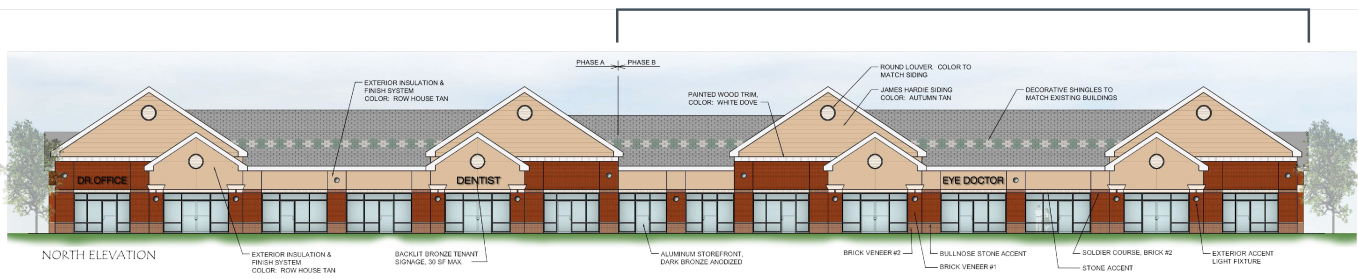
BUILD TO SUIT

MEDICAL OFFICE



Existing Building

## NEW CONSTRUCTION



## Proposed New Building

**TOM OSBORNE, SIOR**

Principal

317.258.0179

tosborne@bradleyco.com

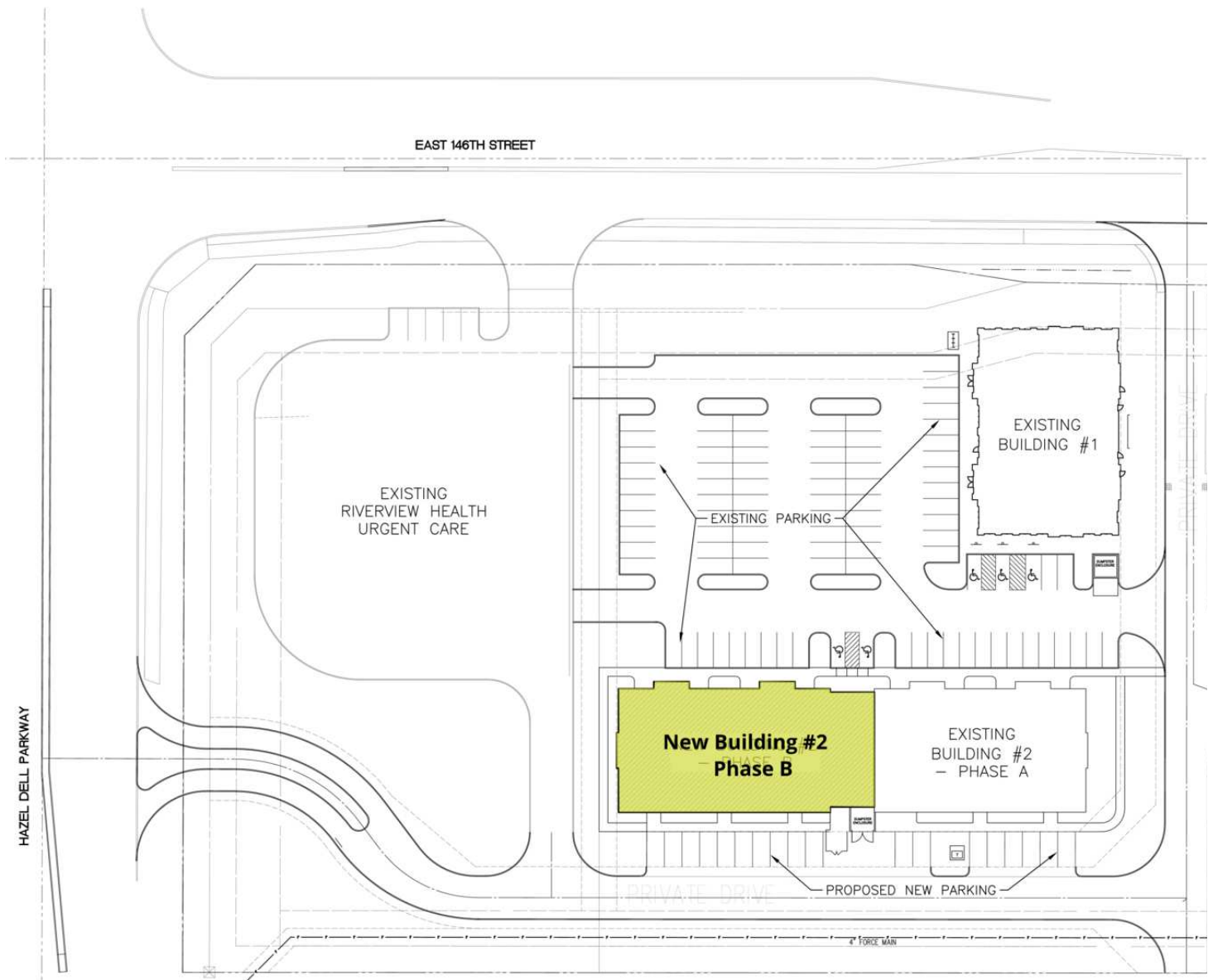




14555 C HAZEL DELL PKWY, CARMEL, IN 46033

BUILD TO SUIT

MEDICAL OFFICE



**TOM OSBORNE, SIOR**

Principal

317.258.0179

tosborne@bradleyco.com