



BIG BLOCK OPPORTUNITY

TOTAL OF 115,289 RSF AVAILABLE ON FLOORS 27-32

 VIRTUAL TOUR

 VIRTUAL TOUR

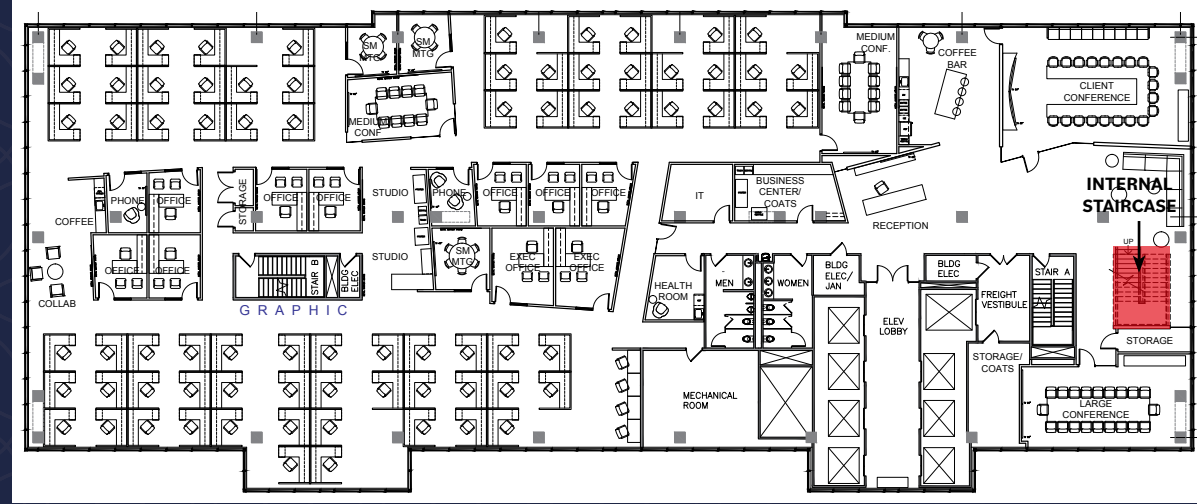
FLOOR 32	19,449 RSF	TOTAL 115,289 RSF
FLOOR 31	19,449 RSF	
FLOOR 30	19,311 RSF	
FLOOR 29	19,000 RSF	
FLOOR 28	19,040 RSF	
FLOOR 27	19,040 RSF	



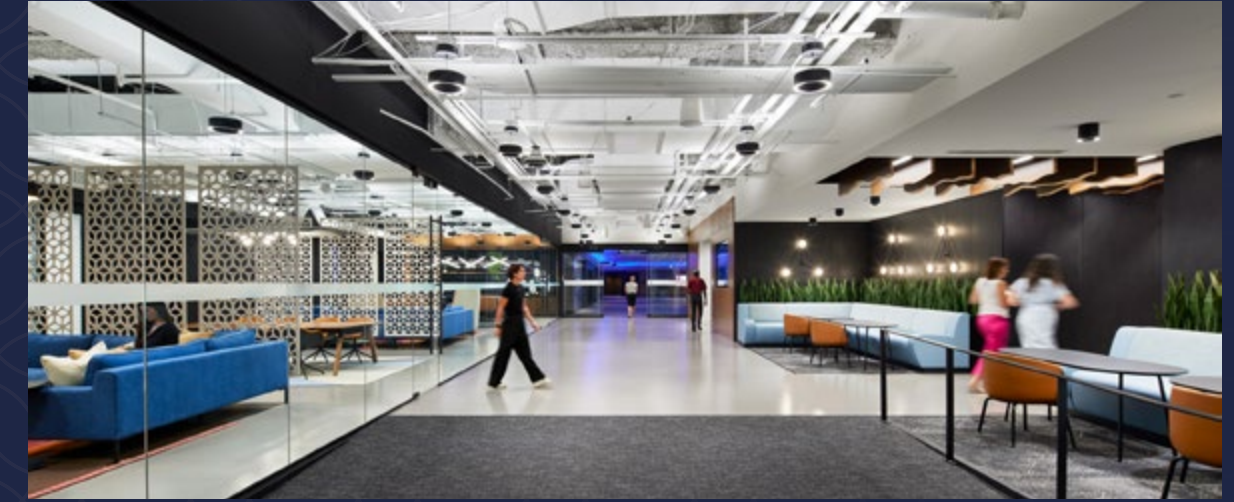
PwC
PLAZA

BIG BLOCK OPPORTUNITY

Floor 31 - high-end space with internal staircase to floor 32





CONNECT TO HOSPITALITY



 Total 115,289 RSF available

 Unobstructive views

 Convenient direct freight access

 Unique off-center side-core floor plates

 Floor plate size: 19,449 RSF

- Floor 27 - 19,040 RSF
- Floor 28 - 19,040 RSF
- Floor 29 - 19,449 RSF
- Floor 30 - 19,449 RSF
- Floor 31 - 19,311 RSF
- Floor 32 - 19,000 RSF


THE MERIDIAN
ROOM
AT PwC PLAZA

The Meridian Room: PwC Plaza's new tenant lounge and state-of-the-art training room

 Recently renovated lobby and skyway amenities

 Underground parking with 24/7 security

 Connected to the 4-star Royal Sonesta hotel

 Located at the center of the Minneapolis skyway system

 On-site management office

 Full-service secured fitness center

PwC Plaza is an iconic 19-story, 330,096 square-foot Class A boutique office tower that sits atop the 17-story Royal Sonesta luxury hotel. PwC Plaza is centrally located on 7th Street, just steps from Nicollet Mall and surrounded by all the best the Minneapolis CBD and Entertainment district has to offer.

visit website



Brent Robertson

+1 612 217 5132

brent.robertson@jll.com

Jon Dahl

+1 612 217 5130

jon.dahl@jll.com

Andrea Leon

+1 612 217 5142

andrea.leon@jll.com

Teig Hutchison

+1 612 217 5157

teig.hutchison@jll.com