

# KEYWEST PLAZA

700, 720, 734 N GOLDEN KEY ST, GILBERT, AZ

INDUSTRIAL SUITES  
FOR LEASE & SUBLEASE



## FEATURES

- ±1,621 to 6,712 SF Available for Lease
- 12' x 14' Grade Level Loading
- Air Conditioned Offices
- Evaporative Cooled Warehouse
- Fire Sprinklered
- 16' - 18' Clear Height
- Zoned I-2, Town of Gilbert
- Located Cooper & Guadalupe Rd



**COMMERCIAL PROPERTIES INC.**

Locally Owned. Globally Connected. CORFAC INTERNATIONAL

TEMPE: 2323 W University Drive, Tempe, AZ 85281 | 480.966.2301  
SCOTTSDALE: 8767 E Via de Commercio, Suite 101, Scottsdale, AZ 85258 | [www.cpi-az.com](http://www.cpi-az.com)

THE LEROY  
BREINHOLT  
TEAM

**KELLI JELINEK**  
D 480.214.1109  
M 480.369.7872  
[KJELINEK@CPIAZ.COM](mailto:KJELINEK@CPIAZ.COM)

**CORY SPOSI**  
D 480.621.4025  
M 480.586.1195  
[CSPOSI@CPIAZ.COM](mailto:CSPOSI@CPIAZ.COM)

The information contained herein has been obtained from various sources. We have no reason to doubt its accuracy; however, J & J Commercial Properties, Inc. has not verified such information and makes no guarantee, warranty or representation about such information. The prospective buyer or lessee should independently verify all dimensions, specifications, floor plans, and all information prior to the lease or purchase of the property. All offerings are subject to prior sale, lease, or withdrawal from the market without prior notice.

10 23 25

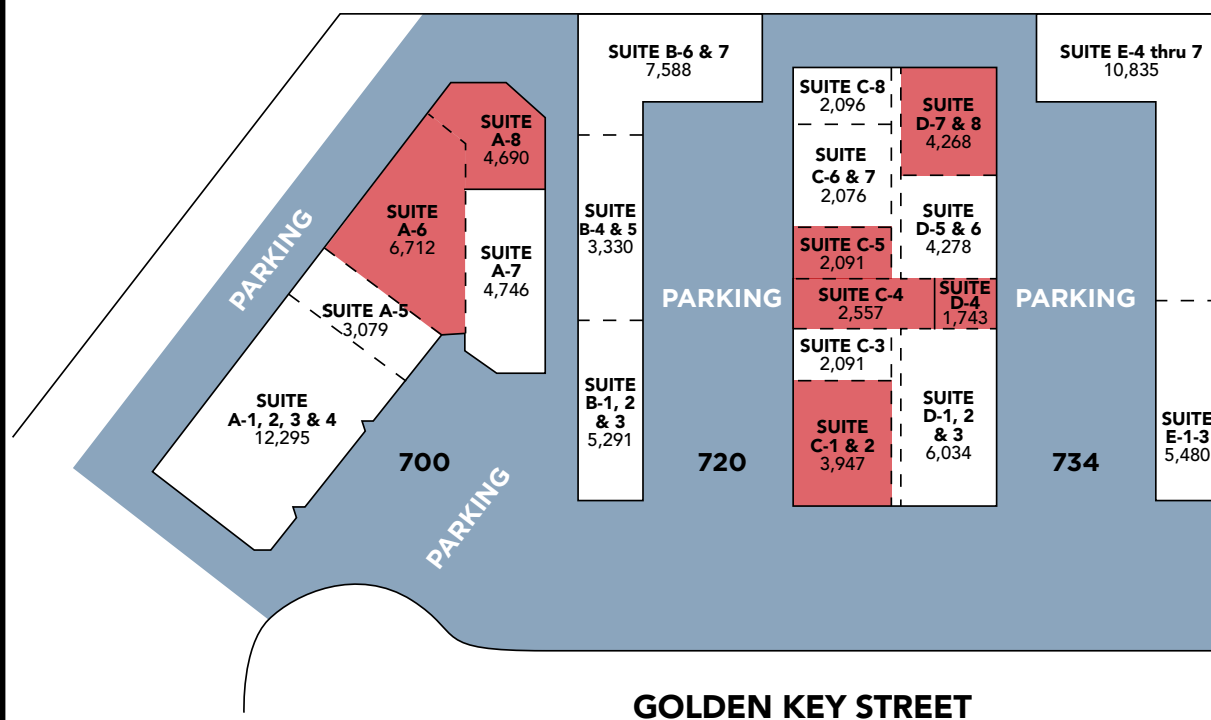
# KEYWEST PLAZA

700, 720, 734 N GOLDEN KEY ST, GILBERT, AZ

INDUSTRIAL SUITES  
FOR LEASE & SUBLEASE

■ AVAILABLE

## KEY WEST Business Park SITE PLAN



**SUITE #** **SQ FT**  
E-1, 2 & 3 5,480  
E-4 thru 7 10,835

**SUITE #** **SQ FT**  
D-1, 2 & 3 6,034  
D-4 1,743  
D-5 & 6 4,278  
D-7 & 8 4,268

**SUITE #** **SQ FT**  
C-1 & 2 3,947  
C-3 2,091  
C-4 2,557  
C-5 2,089  
C-6 & 7 4,311  
C-8 2,096

**SUITE #** **SQ FT**  
B-1, 2 & 3 5,291  
B-4 & 5 3,330  
B-6 & 7 7,588

**SUITE #** **SQ FT**  
A-1, 2, 3 & 4 12,295  
A-5 3,079  
A-6 6,712  
A-7 4,746  
A-8 4,690



TEMPE: 2323 W University Drive, Tempe, AZ 85281 | 480.966.2301  
SCOTTSDALE: 8767 E Via de Commercio, Suite 101, Scottsdale, AZ 85258 | www.cpi.az.com

THE LEROY  
BREINHOLT  
TEAM

KELLI JELINEK  
D 480.214.1109  
M 480.369.7872  
KJELINEK@CPIAZ.COM

CORY SPOSI  
D 480.621.4025  
M 480.586.1195  
CSPOSI@CPIAZ.COM

The information contained herein has been obtained from various sources. We have no reason to doubt its accuracy; however, J & J Commercial Properties, Inc. has not verified such information and makes no guarantee, warranty or representation about such information. The prospective buyer or lessee should independently verify all dimensions, specifications, floor plans, and all information prior to the lease or purchase of the property. All offerings are subject to prior sale, lease, or withdrawal from the market without prior notice.

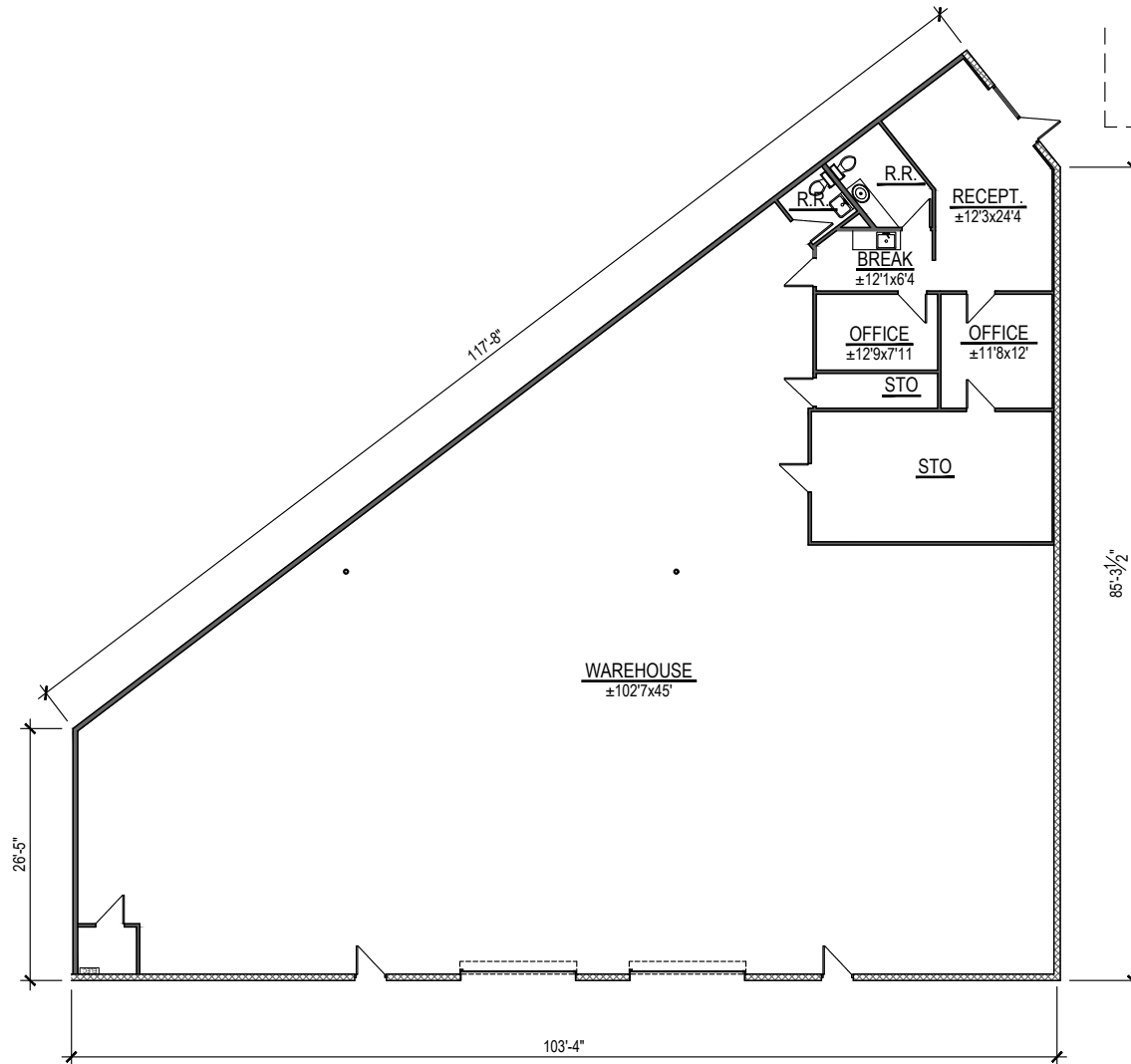


# KEYWEST PLAZA

700, 720, 734 N GOLDEN KEY ST, GILBERT, AZ

INDUSTRIAL SUITES  
FOR LEASE & SUBLEASE

700 N GOLDEN KEY ST  
SUITE A6 | 6,712 SF



**COMMERCIAL PROPERTIES INC.**

Locally Owned. Globally Connected. CORFAC INTERNATIONAL

TEMPE: 2323 W University Drive, Tempe, AZ 85281 | 480.966.2301  
SCOTTSDALE: 8767 E Via de Commercio, Suite 101, Scottsdale, AZ 85258 | [www.cpi.az.com](http://www.cpi.az.com)

THE LEROY  
BREINHOLT  
TEAM

**KELLI JELINEK**  
D 480.214.1109  
M 480.369.7872  
[KJELINEK@CPIAZ.COM](mailto:KJELINEK@CPIAZ.COM)

**CORY SPOSI**  
D 480.621.4025  
M 480.586.1195  
[CSPOSI@CPIAZ.COM](mailto:CSPOSI@CPIAZ.COM)

The information contained herein has been obtained from various sources. We have no reason to doubt its accuracy; however, J & J Commercial Properties, Inc. has not verified such information and makes no guarantee, warranty or representation about such information. The prospective buyer or lessee should independently verify all dimensions, specifications, floor plans, and all information prior to the lease or purchase of the property. All offerings are subject to prior sale, lease, or withdrawal from the market without prior notice.

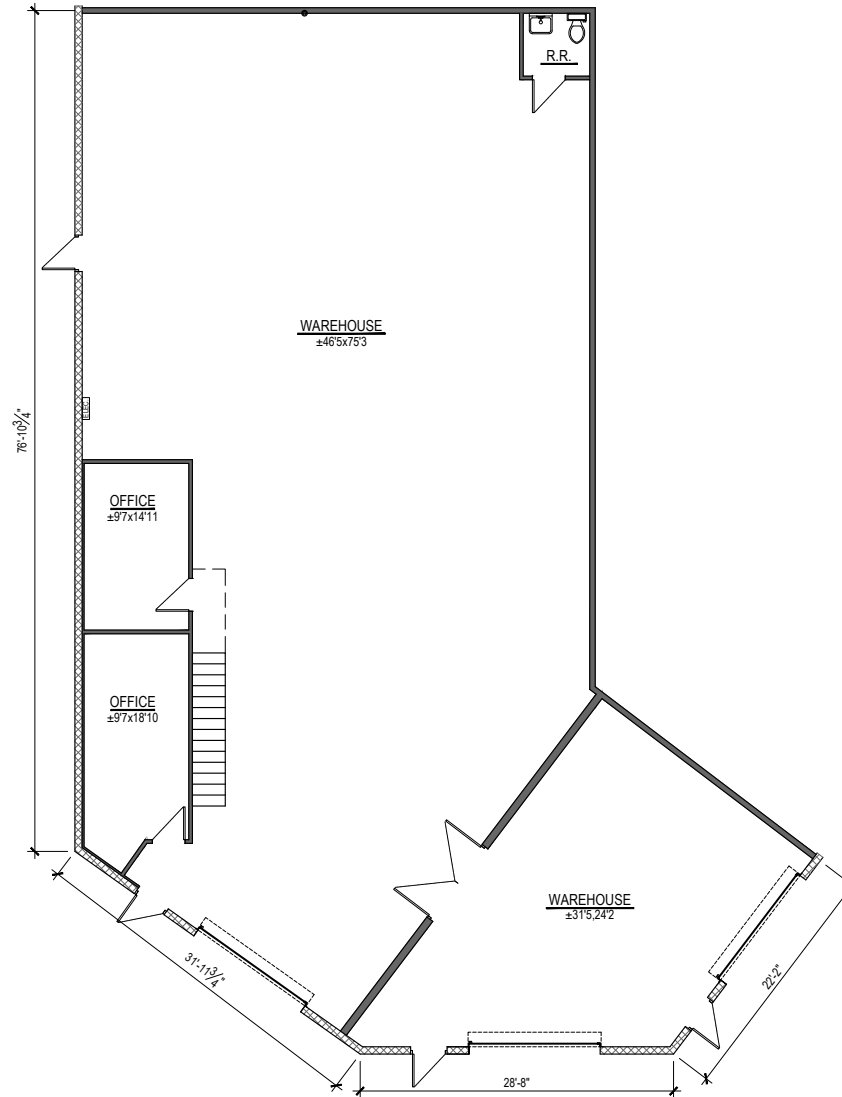
10 23 25

# KEYWEST PLAZA

700, 720, 734 N GOLDEN KEY ST, GILBERT, AZ

INDUSTRIAL SUITES  
FOR LEASE & SUBLEASE

700 N GOLDEN KEY ST  
SUITE A8 | 4,690 SF



**COMMERCIAL PROPERTIES INC.**

Locally Owned. Globally Connected. CORFAC INTERNATIONAL

TEMPE: 2323 W University Drive, Tempe, AZ 85281 | 480.966.2301  
SCOTTSDALE: 8767 E Via de Commercio, Suite 101, Scottsdale, AZ 85258 | [www.cpi-az.com](http://www.cpi-az.com)

THE LEROY  
BREINHOLT  
TEAM

**KELLI JELINEK**  
D 480.214.1109  
M 480.369.7872  
[KJELINEK@CPIAZ.COM](mailto:KJELINEK@CPIAZ.COM)

**CORY SPOSI**  
D 480.621.4025  
M 480.586.1195  
[CSPOSI@CPIAZ.COM](mailto:CSPOSI@CPIAZ.COM)

The information contained herein has been obtained from various sources. We have no reason to doubt its accuracy; however, J & J Commercial Properties, Inc. has not verified such information and makes no guarantee, warranty or representation about such information. The prospective buyer or lessee should independently verify all dimensions, specifications, floor plans, and all information prior to the lease or purchase of the property. All offerings are subject to prior sale, lease, or withdrawal from the market without prior notice.

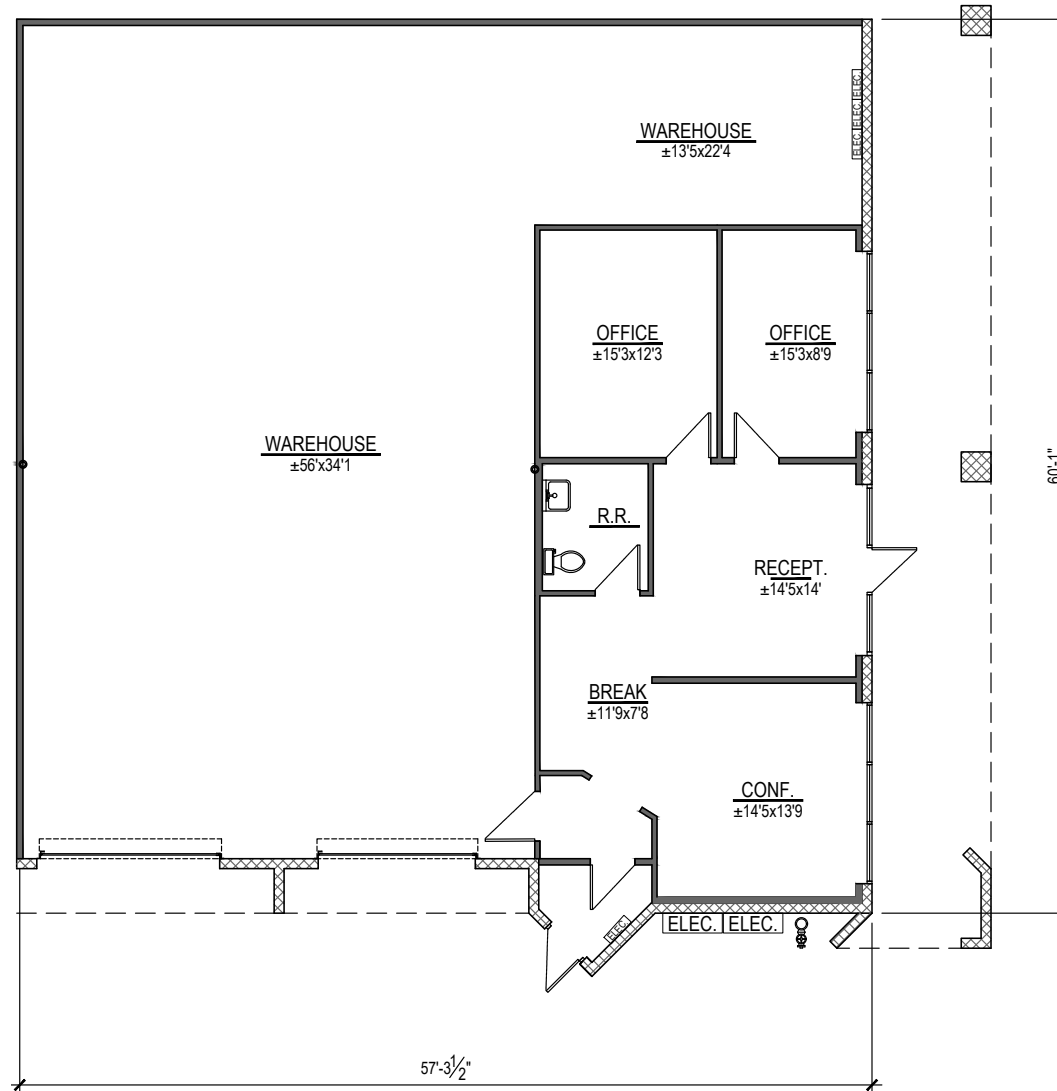
10 23 25

# KEYWEST PLAZA

700, 720, 734 N GOLDEN KEY ST, GILBERT, AZ

INDUSTRIAL SUITES  
FOR LEASE & SUBLEASE

720 N GOLDEN KEY ST  
SUITE C1-2 | 3,947 SF



**COMMERCIAL PROPERTIES INC.**

Locally Owned. Globally Connected. CORFAC INTERNATIONAL

TEMPE: 2323 W University Drive, Tempe, AZ 85281 | 480.966.2301  
SCOTTSDALE: 8767 E Via de Commercio, Suite 101, Scottsdale, AZ 85258 | [www.cpiplaz.com](http://www.cpiplaz.com)

THE LEROY  
BREINHOLT  
TEAM

**KELLI JELINEK**

D 480.214.1109  
M 480.369.7872  
[KJELINEK@CPIAZ.COM](mailto:KJELINEK@CPIAZ.COM)

**CORY SPOSI**

D 480.621.4025  
M 480.586.1195  
[CSPOSI@CPIAZ.COM](mailto:CSPOSI@CPIAZ.COM)

The information contained herein has been obtained from various sources. We have no reason to doubt its accuracy; however, J & J Commercial Properties, Inc. has not verified such information and makes no guarantee, warranty or representation about such information. The prospective buyer or lessee should independently verify all dimensions, specifications, floor plans, and all information prior to the lease or purchase of the property. All offerings are subject to prior sale, lease, or withdrawal from the market without prior notice.

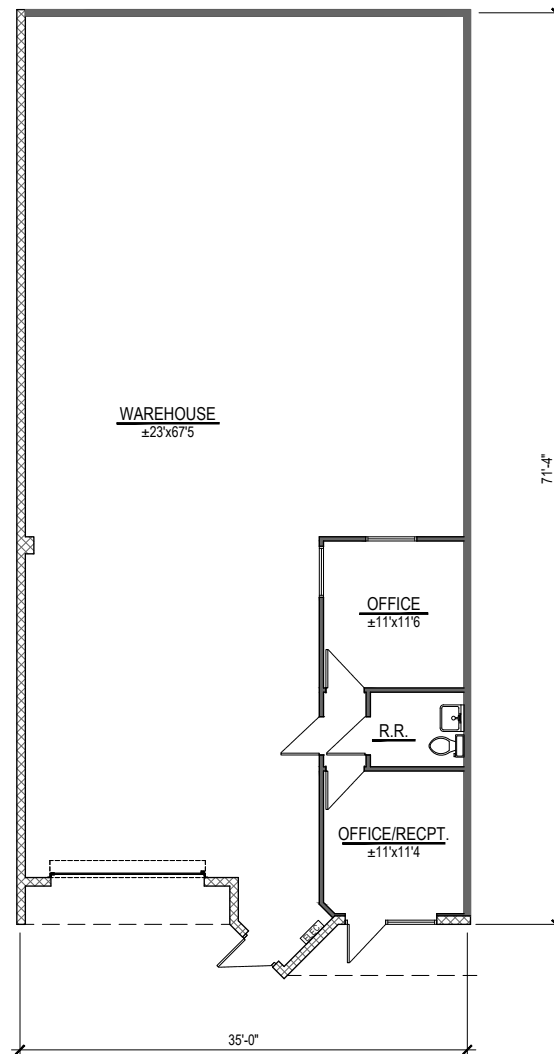
10 23 25

# KEYWEST PLAZA

700, 720, 734 N GOLDEN KEY ST, GILBERT, AZ

INDUSTRIAL SUITES  
FOR LEASE & SUBLEASE

**720 N GOLDEN KEY ST**  
**SUITE C4 | 2,557 SF**



**COMMERCIAL PROPERTIES INC.**

Locally Owned. Globally Connected. CORFAC INTERNATIONAL

TEMPE: 2323 W University Drive, Tempe, AZ 85281 | 480.966.2301  
SCOTTSDALE: 8767 E Via de Commercio, Suite 101, Scottsdale, AZ 85258 | [www.cpi.az.com](http://www.cpi.az.com)

THE LEROY  
BREINHOLT  
TEAM

**KELLI JELINEK**  
D 480.214.1109  
M 480.369.7872  
[KJELINEK@CPIAZ.COM](mailto:KJELINEK@CPIAZ.COM)

**CORY SPOSI**  
D 480.621.4025  
M 480.586.1195  
[CSPOSI@CPIAZ.COM](mailto:CSPOSI@CPIAZ.COM)

The information contained herein has been obtained from various sources. We have no reason to doubt its accuracy; however, J & J Commercial Properties, Inc. has not verified such information and makes no guarantee, warranty or representation about such information. The prospective buyer or lessee should independently verify all dimensions, specifications, floor plans, and all information prior to the lease or purchase of the property. All offerings are subject to prior sale, lease, or withdrawal from the market without prior notice.

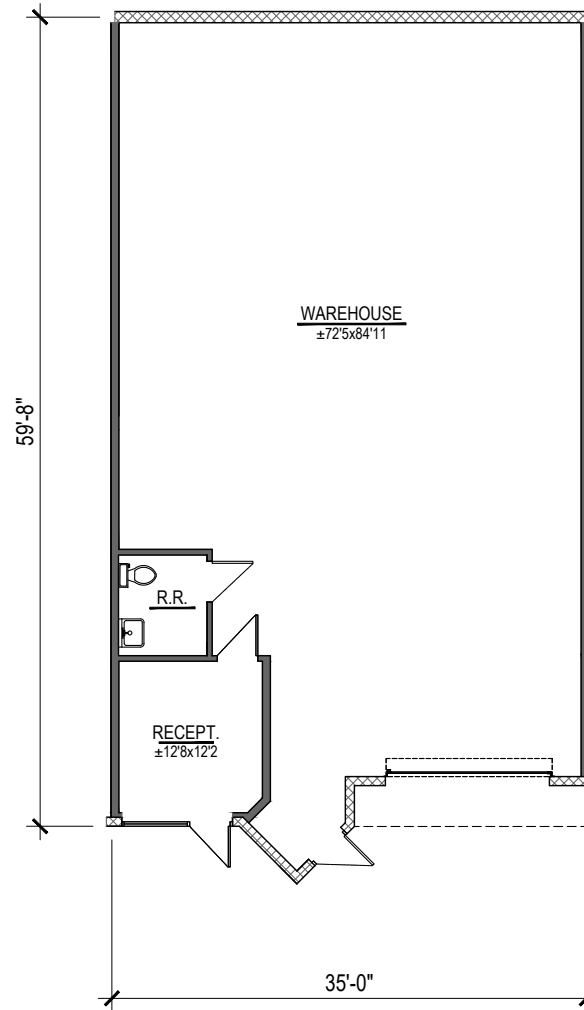
10 23 25

# KEYWEST PLAZA

700, 720, 734 N GOLDEN KEY ST, GILBERT, AZ

INDUSTRIAL SUITES  
FOR LEASE & SUBLEASE

720 N GOLDEN KEY ST  
SUITE C5 | 2,089 SF



**COMMERCIAL PROPERTIES INC.**

Locally Owned. Globally Connected. CORFAC INTERNATIONAL

TEMPE: 2323 W University Drive, Tempe, AZ 85281 | 480.966.2301  
SCOTTSDALE: 8767 E Via de Commercio, Suite 101, Scottsdale, AZ 85258 | [www.cpiplaz.com](http://www.cpiplaz.com)

THE LEROY  
BREINHOLT  
TEAM

**KELLI JELINEK**  
D 480.214.1109  
M 480.369.7872  
[KJELINEK@CPIAZ.COM](mailto:KJELINEK@CPIAZ.COM)

**CORY SPOSI**  
D 480.621.4025  
M 480.586.1195  
[CSPOSI@CPIAZ.COM](mailto:CSPOSI@CPIAZ.COM)

The information contained herein has been obtained from various sources. We have no reason to doubt its accuracy; however, J & J Commercial Properties, Inc. has not verified such information and makes no guarantee, warranty or representation about such information. The prospective buyer or lessee should independently verify all dimensions, specifications, floor plans, and all information prior to the lease or purchase of the property. All offerings are subject to prior sale, lease, or withdrawal from the market without prior notice.

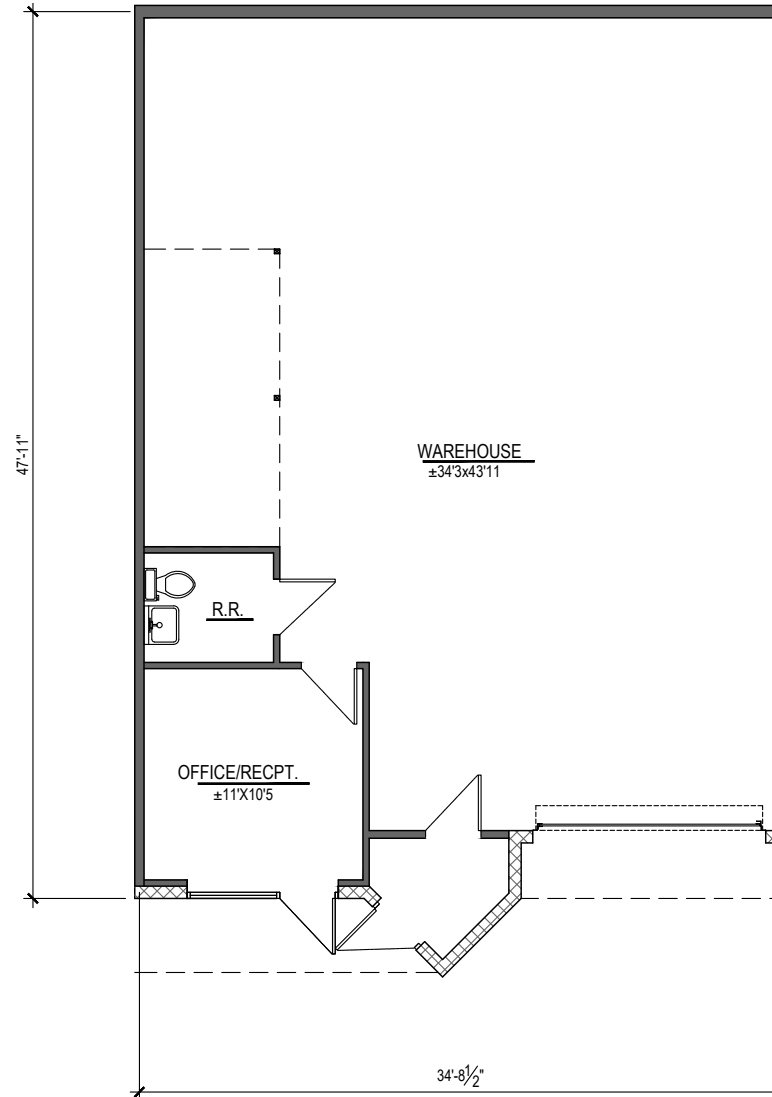
10 23 25

# KEYWEST PLAZA

700, 720, 734 N GOLDEN KEY ST, GILBERT, AZ

INDUSTRIAL SUITES  
FOR LEASE & SUBLEASE

**734 N GOLDEN KEY ST**  
**SUITE D4 | 1,743 SF**



**COMMERCIAL PROPERTIES INC.**

Locally Owned. Globally Connected. CORFAC INTERNATIONAL

TEMPE: 2323 W University Drive, Tempe, AZ 85281 | 480.966.2301  
SCOTTSDALE: 8767 E Via de Commercio, Suite 101, Scottsdale, AZ 85258 | [www.cpiplaza.com](http://www.cpiplaza.com)

THE LEROY  
BREINHOLT  
TEAM

**KELLI JELINEK**

D 480.214.1109  
M 480.369.7872  
[KJELINEK@CPIAZ.COM](mailto:KJELINEK@CPIAZ.COM)

**CORY SPOSI**

D 480.621.4025  
M 480.586.1195  
[CSPOSI@CPIAZ.COM](mailto:CSPOSI@CPIAZ.COM)

The information contained herein has been obtained from various sources. We have no reason to doubt its accuracy; however, J & J Commercial Properties, Inc. has not verified such information and makes no guarantee, warranty or representation about such information. The prospective buyer or lessee should independently verify all dimensions, specifications, floor plans, and all information prior to the lease or purchase of the property. All offerings are subject to prior sale, lease, or withdrawal from the market without prior notice.

10 23 25

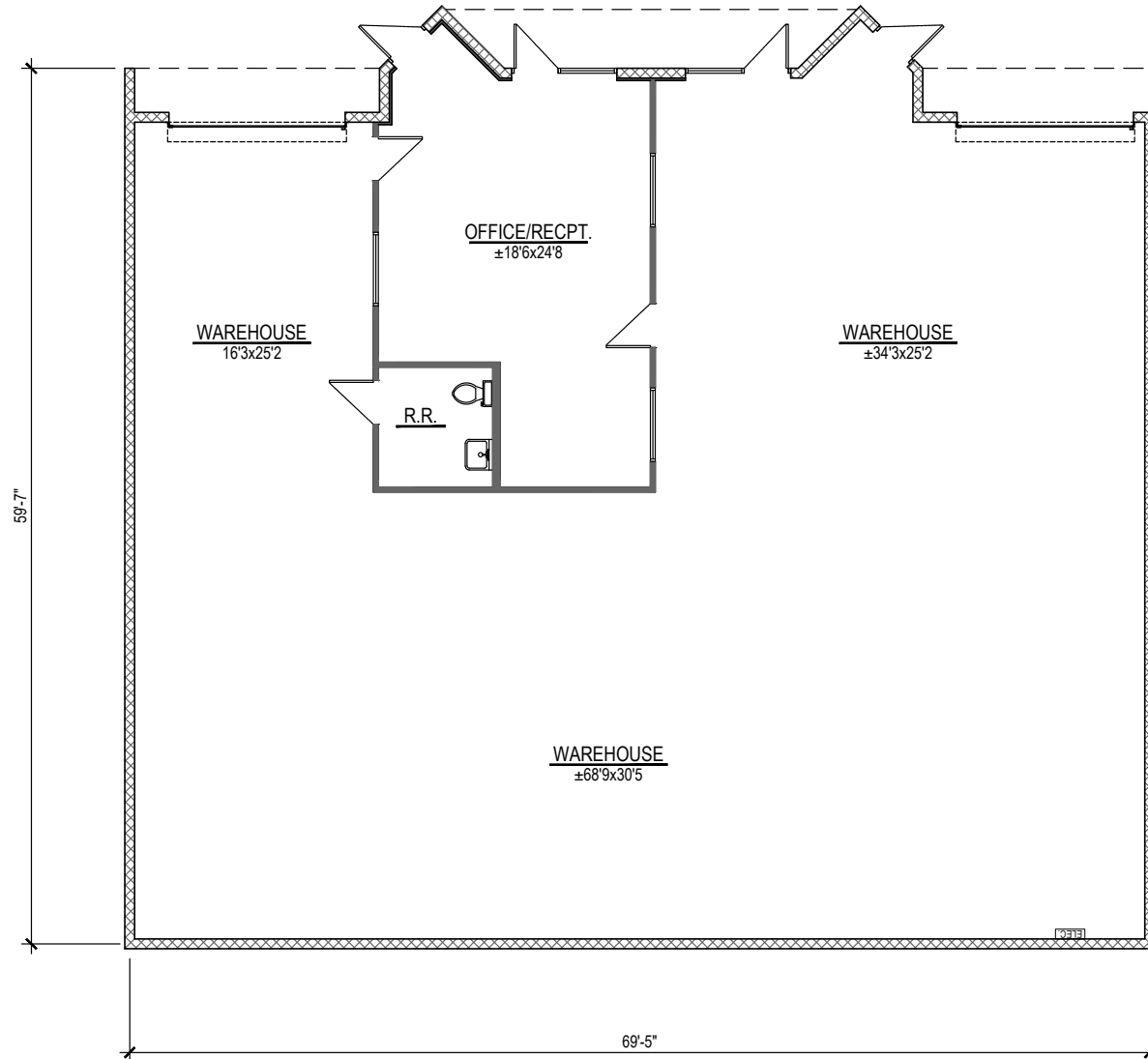


# KEYWEST PLAZA

700, 720, 734 N GOLDEN KEY ST, GILBERT, AZ

INDUSTRIAL SUITES  
FOR LEASE & SUBLEASE

734 N GOLDEN KEY ST  
SUITE D7 & 8 | 4,268 SF



**COMMERCIAL PROPERTIES INC.**

Locally Owned. Globally Connected. CORFAC INTERNATIONAL

TEMPE: 2323 W University Drive, Tempe, AZ 85281 | 480.966.2301  
SCOTTSDALE: 8767 E Via de Commercio, Suite 101, Scottsdale, AZ 85258 | [www.cpiplaz.com](http://www.cpiplaz.com)

THE LEROY  
BREINHOLT  
TEAM

**KELLI JELINEK**  
D 480.214.1109  
M 480.369.7872  
[KJELINEK@CPIAZ.COM](mailto:KJELINEK@CPIAZ.COM)

**CORY SPOSI**  
D 480.621.4025  
M 480.586.1195  
[CSPOSI@CPIAZ.COM](mailto:CSPOSI@CPIAZ.COM)

The information contained herein has been obtained from various sources. We have no reason to doubt its accuracy; however, J & J Commercial Properties, Inc. has not verified such information and makes no guarantee, warranty or representation about such information. The prospective buyer or lessee should independently verify all dimensions, specifications, floor plans, and all information prior to the lease or purchase of the property. All offerings are subject to prior sale, lease, or withdrawal from the market without prior notice.

10 23 25