

OFFICE SPACES FOR LEASE

419 KING STREET WEST

OSHAWA, ON



GALLERIA - AVAILABILITIES

Suite 102	LEASED!	2,593 sq. ft.
Suite 104		1,602 sq. ft.
Suite 115	LEASED!	3,080 sq. ft.
Suite 175	LEASED!	1,151 sq. ft.
Suite 185		2,382 sq. ft.

Asking Rate	\$14.50 per sq. ft.
Additional Rent (2023 estimate)	\$10.20 per sq. ft.

CENTRAL OFFICE - AVAILABILITIES

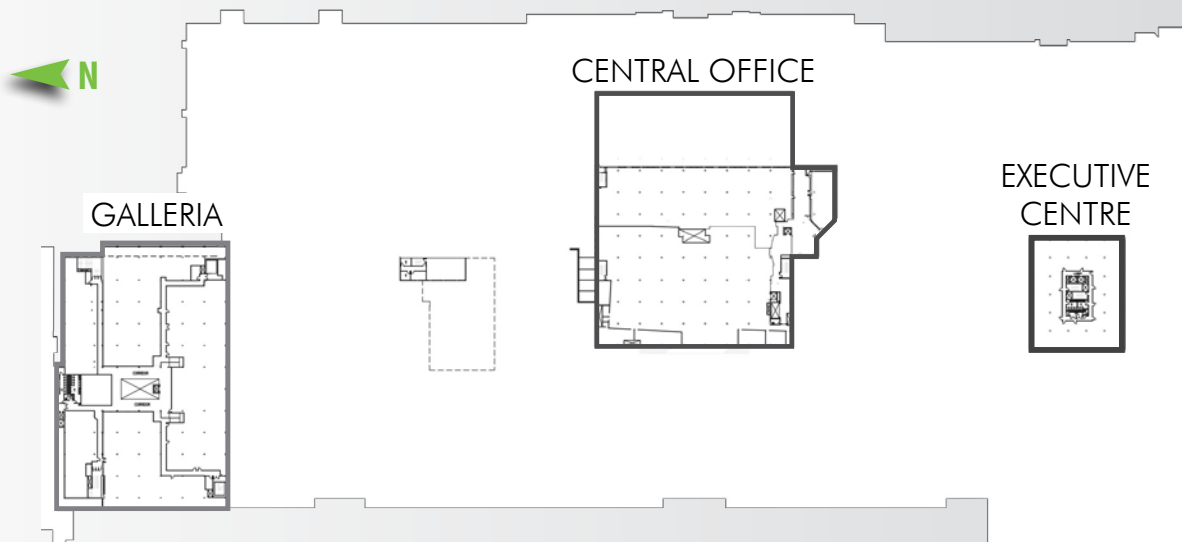
Suite 1210	15,530 sq. ft.
Suite 3550B	15,719 sq. ft.

Asking Rate	\$14.50 per sq. ft.
Additional Rent (2023 estimate)	\$11.07 per sq. ft.

EXECUTIVE CENTRE - AVAILABILITIES

Suite 203A	LEASED!	883 sq. ft.
Suite 207		3,264 sq. ft.
Suite 209		3,129 sq. ft.
Suite 300		1,450 sq. ft.
Suite 402		1,920 sq. ft.
Suite 510		1,082 sq. ft.
Suite 601		1,598 sq. ft.

Suite 603A	LEASED!	1,321 sq. ft.
Suite 605		2,459 sq. ft.
Asking Rate	\$14.50 per sq. ft.	
Additional Rent (2023 estimate)	\$13.85 per sq. ft.	



Outlines are approximate

OFFICE SPACES FOR LEASE

419 KING STREET WEST

OSHAWA, ON



RENOVATED FOOD COURT



- 1000+ seating capacity and exciting new food offerings
- Direct access to new underground parking facilities

AMENITY-RICH OFFICE COMPLEX



- Ample designated parking for office tenants
- Access to GO Transit and Durham Regional public transit
- Direct access to Goodlife Fitness
- 24-hour security services
- On-site property management
- Wifi connectivity and fibre optic capability

REVITALIZED OFFICE AREA



- Executive Centre is now directly accessible from the newly renovated mall
- Full renovation of Executive Centre lobby
- Access to centrally-located community room



"BOMA" Platinum Certified Building

FOR MORE INFORMATION,
PLEASE CONTACT:

TONY GILL*

Senior Vice President
+1 416 495 6261
tony.gill@cbre.com

STEPHEN BROWN*

Vice President
+1 416 495 6239
steve.brown@cbre.com

IVANA GRUJIC-MATES

Sales Representative
+1 416 495 6281
ivana.mates@cbre.com

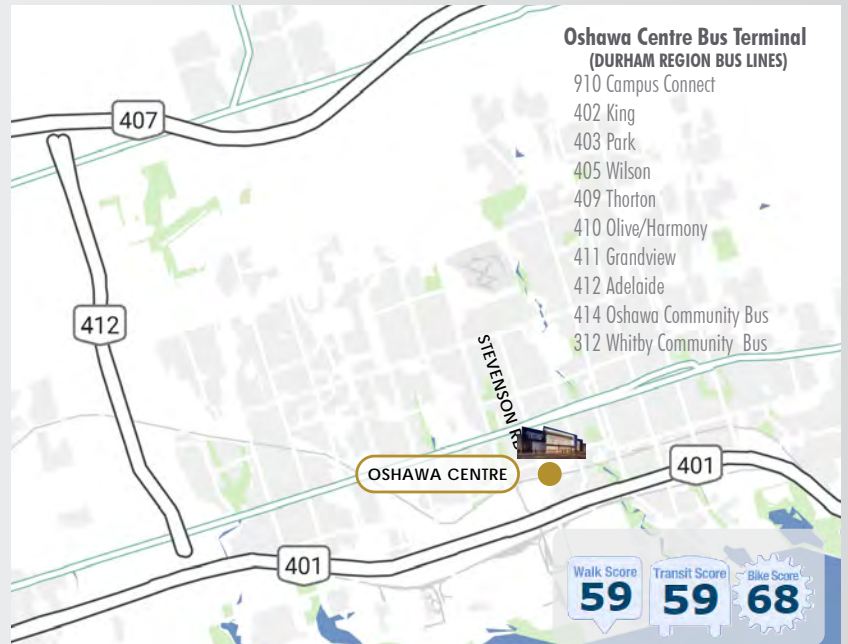
MICHELLE SABERON*

Senior Transaction Manager
+1 416 495 6318
michelle.saberon@cbre.com

CBRE Limited Brokerage
2005 Sheppard Avenue E
Suite 800
Toronto, ON M2J 5B4



oshawacentre.com



*Sales Representative

All Outlines Approximate

This disclaimer shall apply to CBRE Limited, Real Estate Brokerage, and to all other divisions of the Corporation; to include all employees and independent contractors ("CBRE"). The information set out herein, including, without limitation, any projections, images, opinions, assumptions and estimates obtained from third parties (the "Information") has not been verified by CBRE, and CBRE does not represent, warrant or guarantee the accuracy, correctness and completeness of the Information. CBRE does not accept or assume any responsibility or liability, direct or consequential, for the information or the recipient's reliance upon the information. The recipient of the information should take such steps as the recipient may deem necessary to verify the information prior to placing any reliance upon the information. The information may change and any property described in the information may be withdrawn from the market at any time without notice or obligation to the recipient from CBRE. CBRE and the CBRE logo are the service marks of CBRE Limited and/or its affiliated or related companies in other countries. All other marks displayed on this document are the property of their respective owners. Mapping Sources: Canadian Mapping Services canadamapping@cbre.com; MapPoint, DMTI Spatial, Envirionics Analytics, Microsoft Bing, Google Earth

CBRE