

2300 Genoa Business Park Drive

Brighton, Michigan 48114

AVISON
YOUNG

Cross  Pointe
HEALTH CENTER

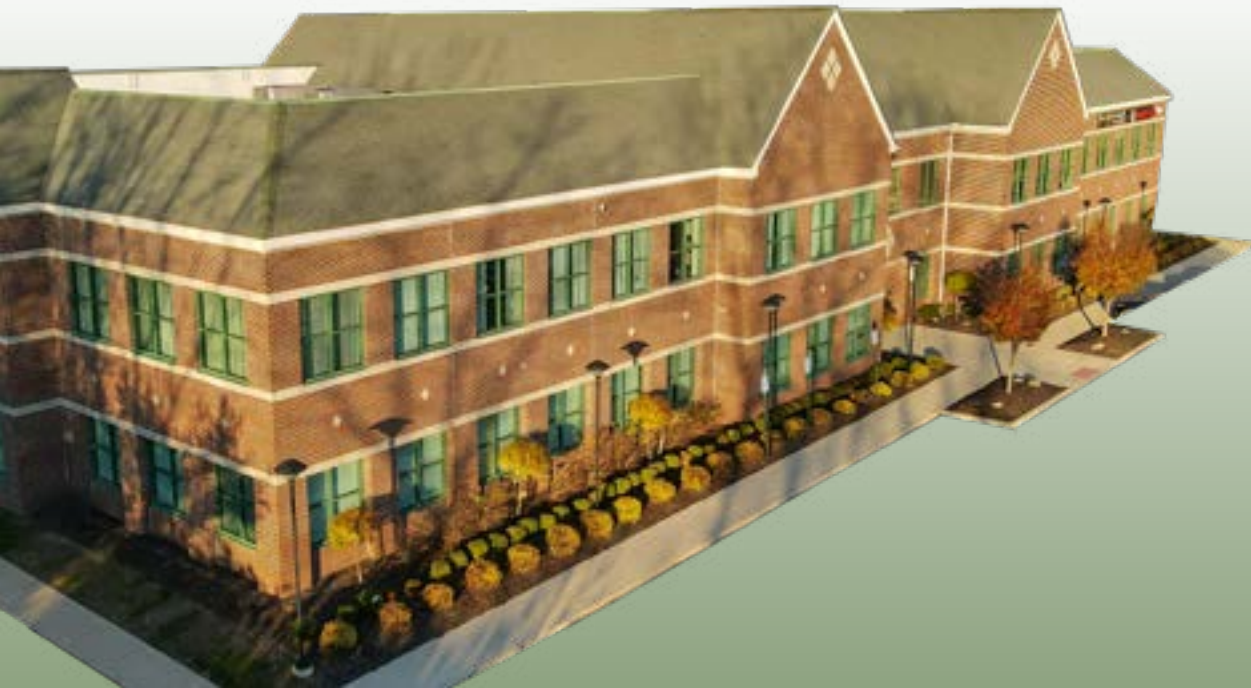
NOW LEASING

The CrossPointe advantage.

CrossPointe Health Center is recognized for its prime location; strategically positioned amongst a full-spectrum of medical practices, and adjacent to the new Trinity Health Hospital, creating a robust referring network of patients for your clients' needs.

AVAILABILITY SNAPSHOT

- ◆ Suite 130 | 1,171 sf (available September 2024)
- ◆ Suite 160 | 1,093 sf (contiguous w/suite 130)
- ◆ Suite 190 | 2,980 sf
- ◆ Suite 230 | 988 sf



Property Snapshot

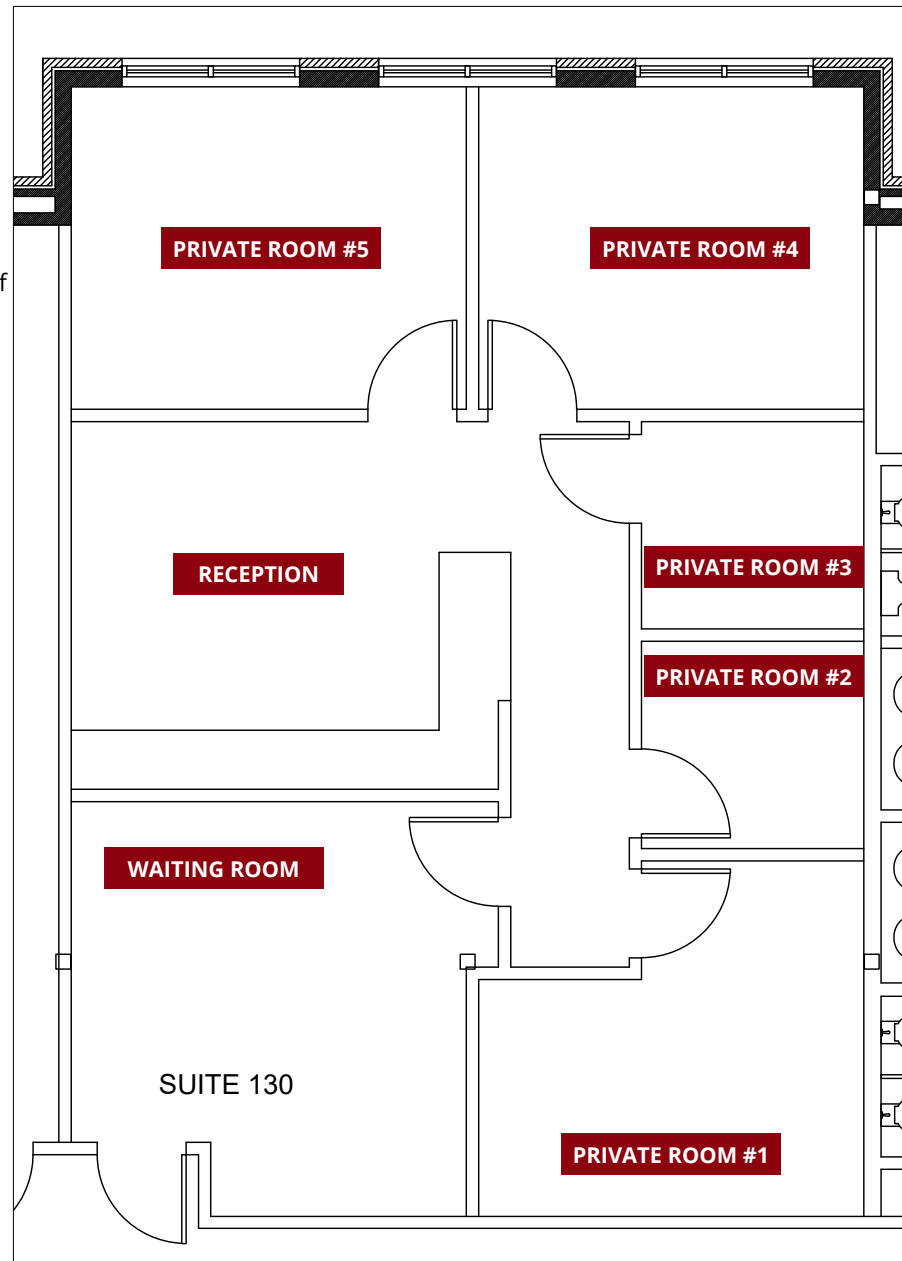
Distinguished 31,050 square foot medical office building with just a few suites remaining!

- Adjacent to Trinity Health Hospital's new medical campus and circuted by leading gynecology, oncology, orthopedic and cardiovascular practices
- Attractive newly renovated lobby with seating, tenant directory and bathrooms on each floor for convenience
- Rich referring tenant roster comprising of physical therapy, behavioral health, dentistry and urology
- Spacious parking lot consisting of 143 parking spaces
- Prominent location off Grand River Avenue, less than two-miles from I-96 and 2.5 miles from Downtown Brighton
- Professionally managed and maintained by ownership
- **Lease rate:** \$18.00 NNN

SUITE 130

1,171 SF AVAILABLE

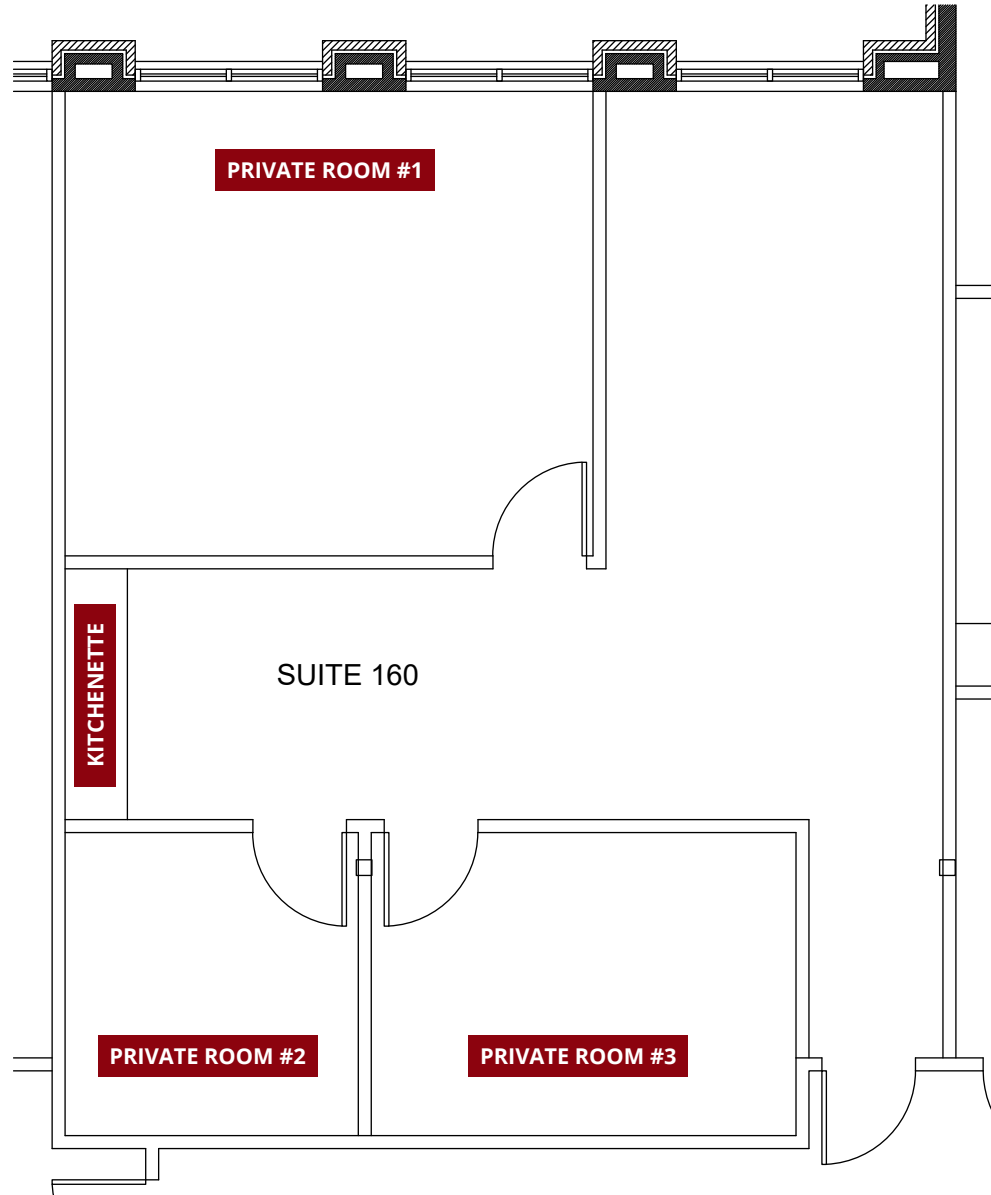
- ◆ First floor availability as of September 2024
- ◆ The suite offers a reception/waiting room and five private offices, two of which are window-lined
- ◆ Subject Suite is contiguous with Suite 160 for a total opportunity of 2,264sf



SUITE 160

1,093 SF AVAILABLE

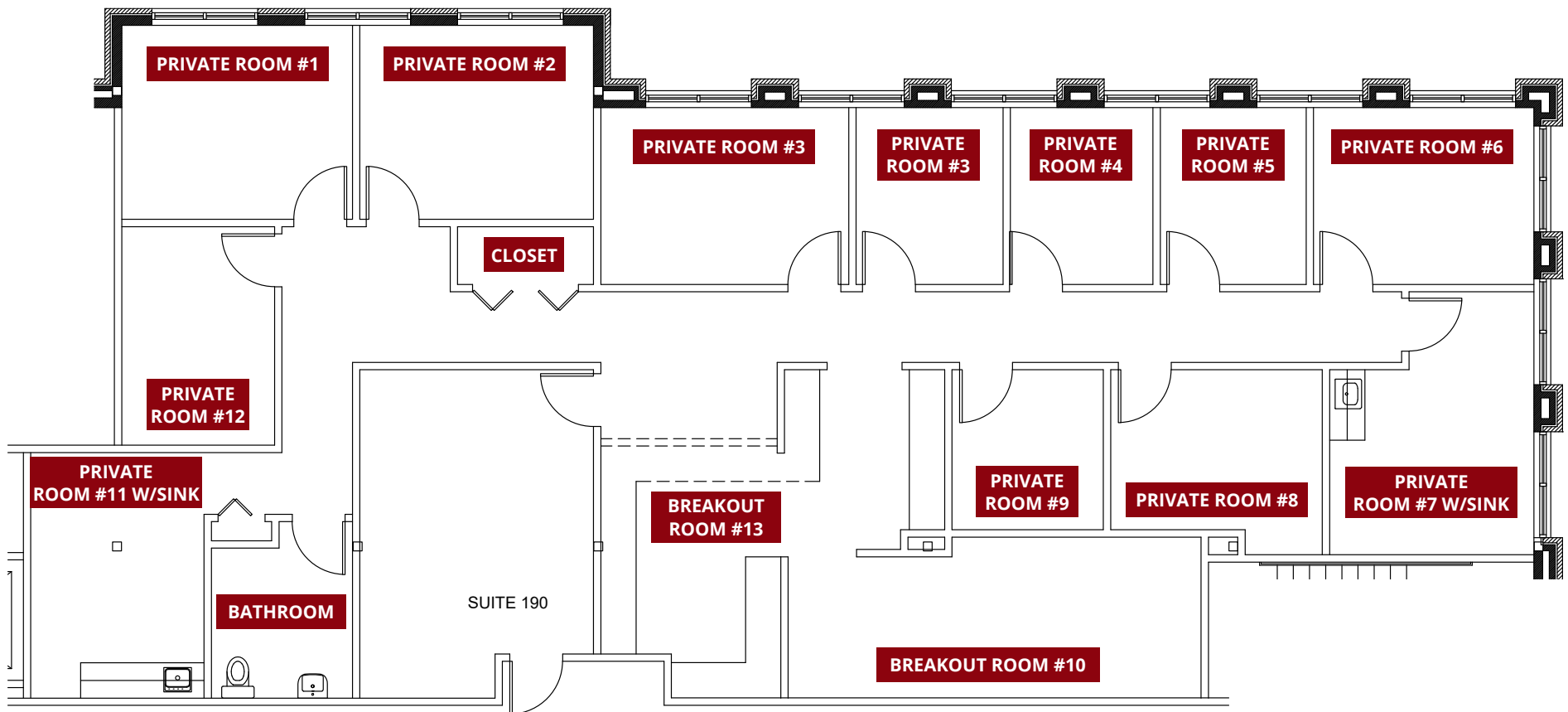
- ◆ First floor suite offers over-sized windows with southern exposure overlooking front entrance of the building



SUITE 190

2,980 SF AVAILABLE

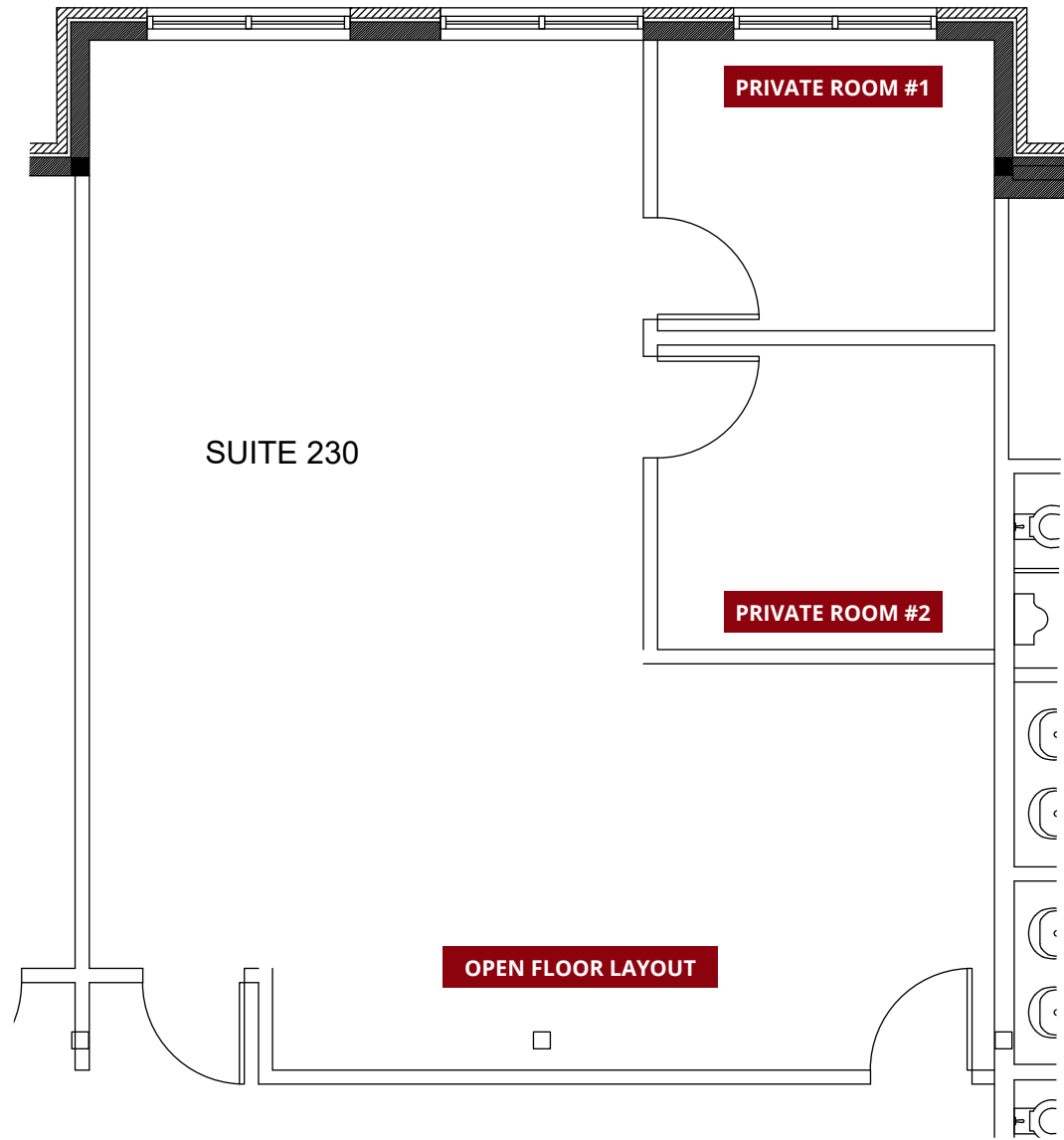
- ◆ First floor trophy suite
- ◆ The suite is equipped with a common area, private bathroom and 13 rooms



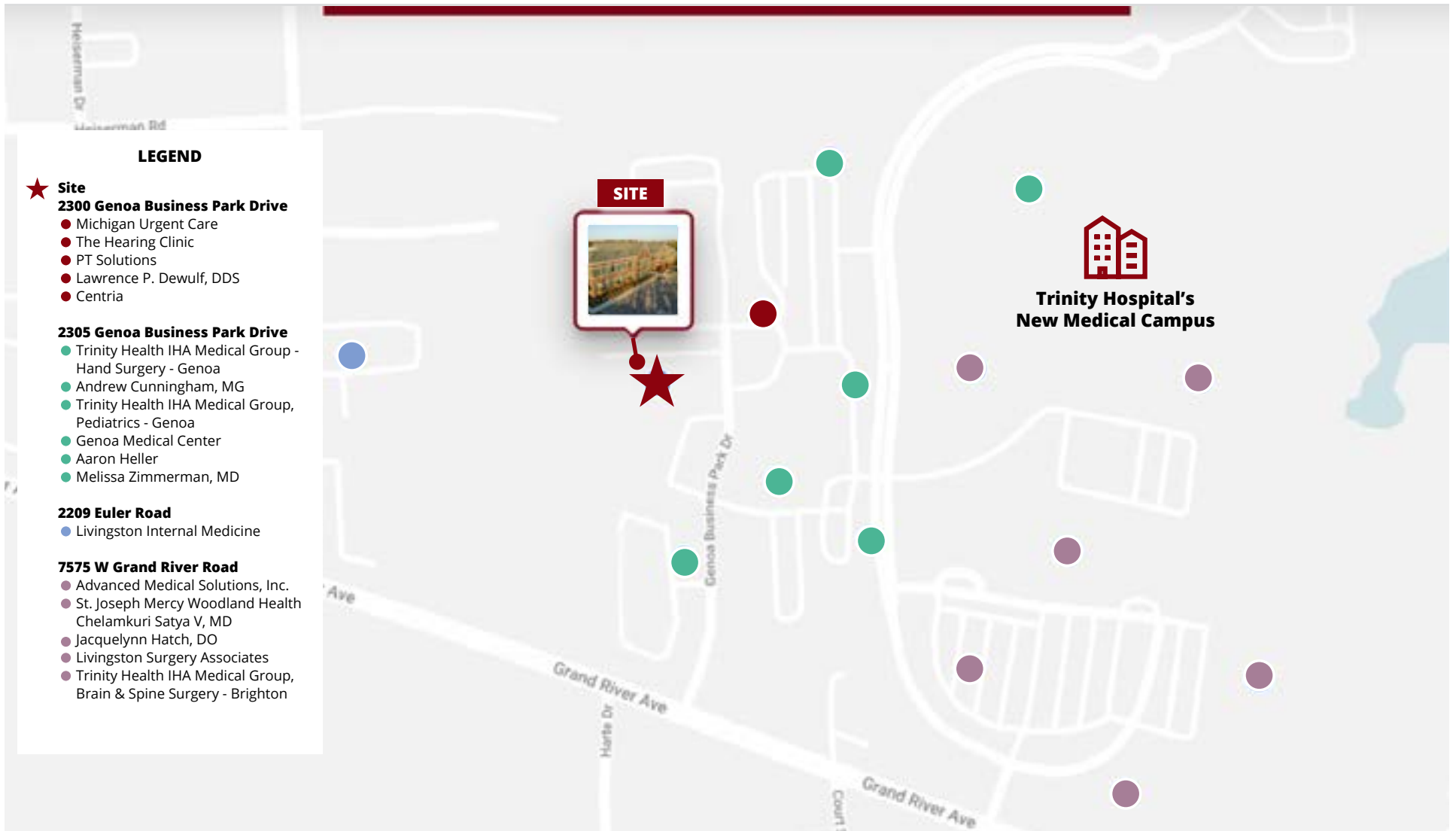
SUITE 230

988 SF AVAILABLE

- ◆ Second floor suite offers two offices with open floor plan
- ◆ Adjacent to second floor bathrooms with convenient access to the elevator
- ◆ Private room #1 is approximately 8'9" x 10'
- ◆ Private room #2 is approximately 8'11" x 10'



The right location for your practice.



Let's
talk.



AVISON YOUNG

Joanna K. Konopka

D: +1 313 209 4124

E: joanna.konopka@avisonyoung.com

Visit us online

[crosspointehealth.com](https://www.crosspointehealth.com)

© 2023 Avison Young Michigan - LLC. All rights reserved. E. & O.E.: The information contained herein was obtained from sources which we deem reliable and, while thought to be correct, is not guaranteed by Avison Young.