

**AVISON
YOUNG**

141-147

PORTLAND STREET



MID \$30'S PER SF

Move-in ready space

1,317 SF - 16,050 SF AVAILABLE FOR LEASE



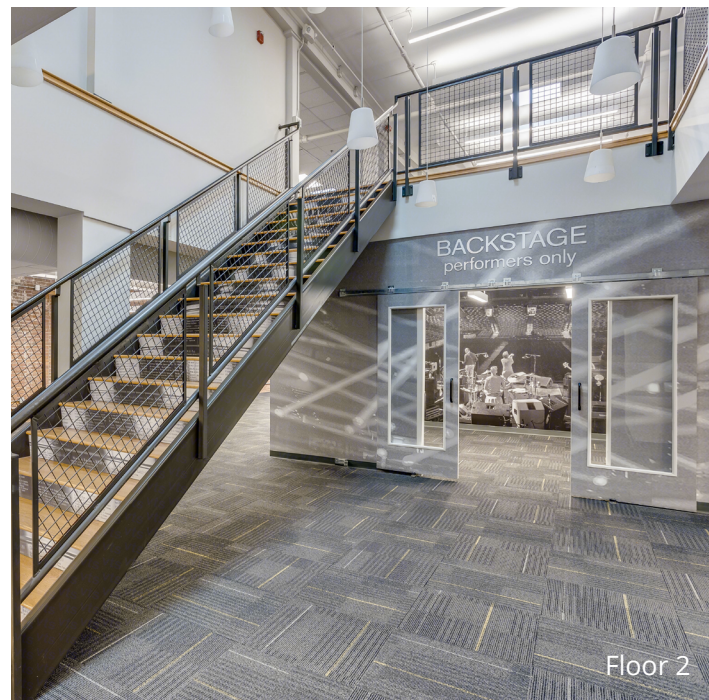
Floor 1



Floor 1



Floor 2



Floor 2



Floor 3

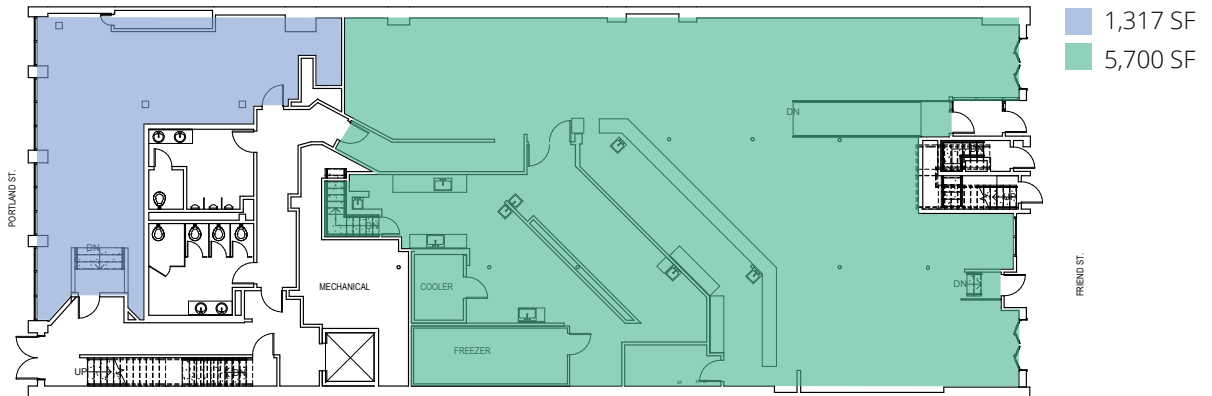


Floor 3

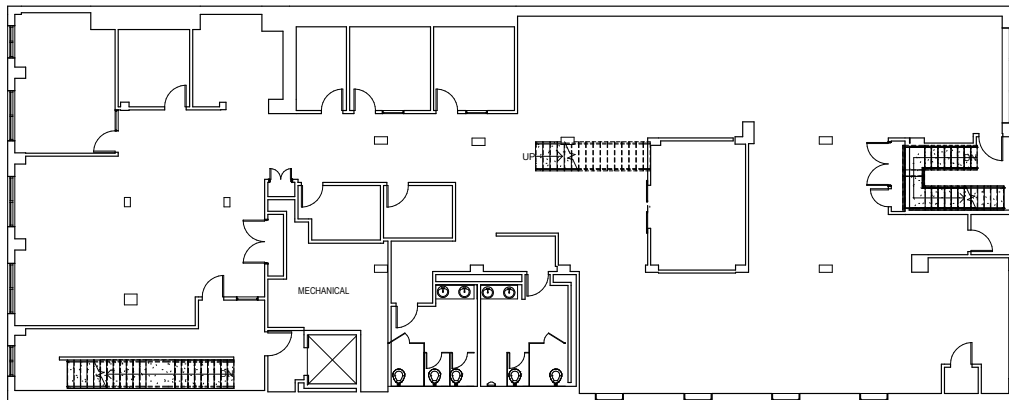
Floor plans

1st Floor | 1,317 SF (partial floor)

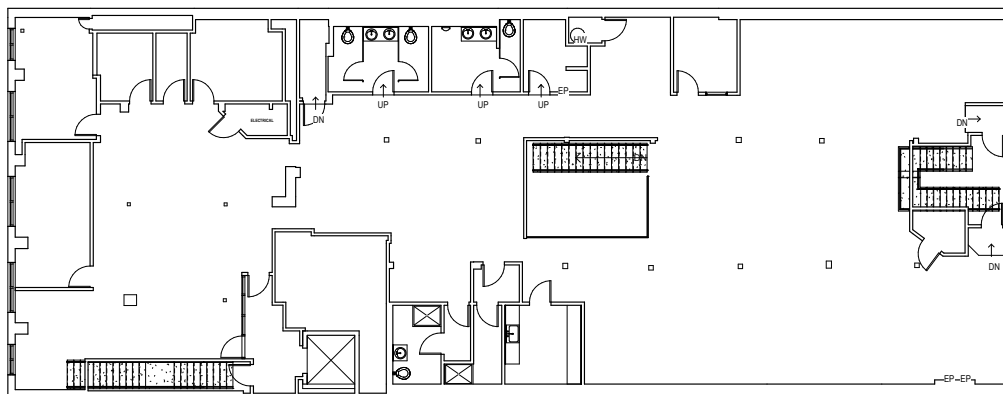
1st Floor | 5,700 SF (partial floor)



2nd Floor | 7,939 SF (entire floor)



3rd Floor | 8,111 SF (entire floor)



***16,050 SF available across 2 floors for the 2nd and 3rd floor openings**



Building features



Exposed brick and skylights



Private entrance & dedicated elevator



Building signage & branding opportunity



Interconnecting stairwells between 2nd & 3rd floors



Easy access to MBTA and Commuter Rail at North Station



Walking distance to TD Garden and surrounding restaurants and retail amenities

For more information, please contact:

Kirk Weller

Senior Vice President

+1 617 456 1363

kirk.weller@avisonyoung.com

Jeff Gates

Principal

+1 617 595 6015

jeff.gates@avisonyoung.com