

Leasing by:



Owned & Managed by:

**welltower**

Click or Scan Below



FOR INFORMATION:

**KYLE CHURCH**  
Lightpoint Real Estate Partners

205.919.1528  
kyle@lightpointcre.com

MEDICAL OFFICE SPACE

**FOR LEASE**

**Princeton III**

833 PRINCETON AVENUE | BIRMINGHAM, AL

[medicaloffice.welltower.com](http://medicaloffice.welltower.com)

# EXECUTIVE SUMMARY



## Location Description

Located on the campus of Princeton Baptist Medical Center.

## Property Highlights

- The Princeton facility consists of over 252,000 s.f. and offers a variety of medical specialties and diagnostic services including cancer treatment, cardiac services, diagnostic imaging, neurosurgery and pulmonary medicine and wound care.

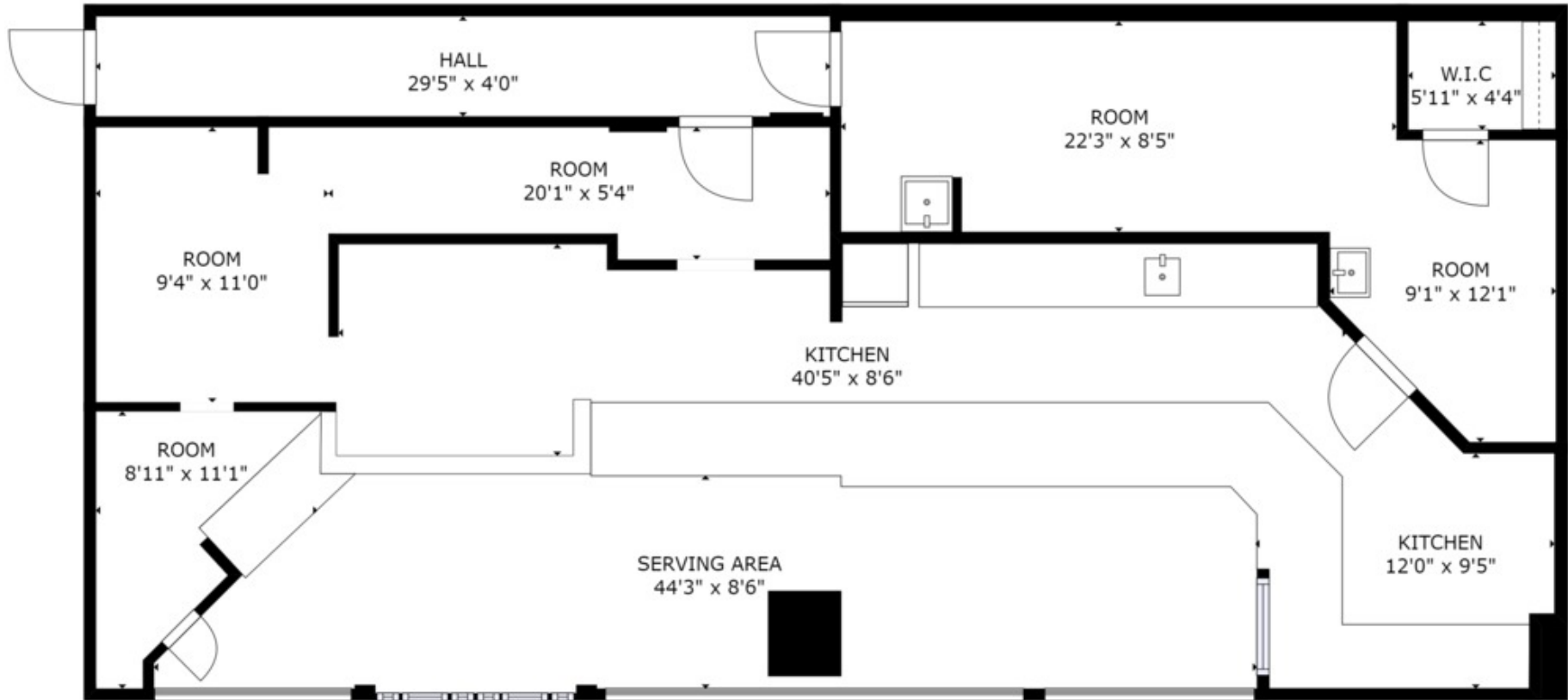


**KYLE CHURCH**  
205.919.1528  
kyle@lightpointcre.com



# FLOOR PLANS

welltower



114

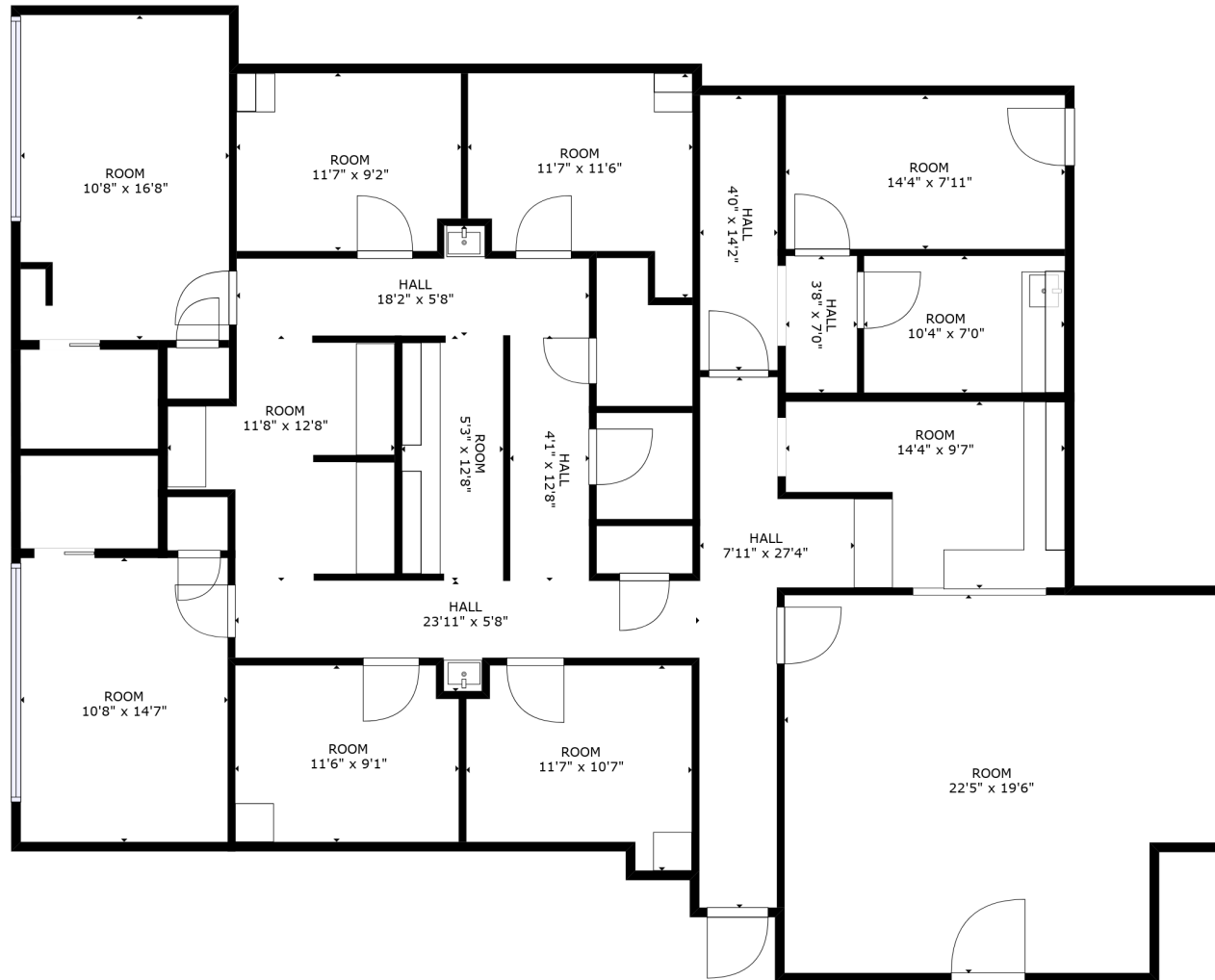
1,875 RSF

**KYLE CHURCH**  
205.919.1528  
kyle@lightpointcre.com



# FLOOR PLANS

welltower



200G

3,306 RSF

**KYLE CHURCH**  
205.919.1528  
kyle@lightpointcre.com



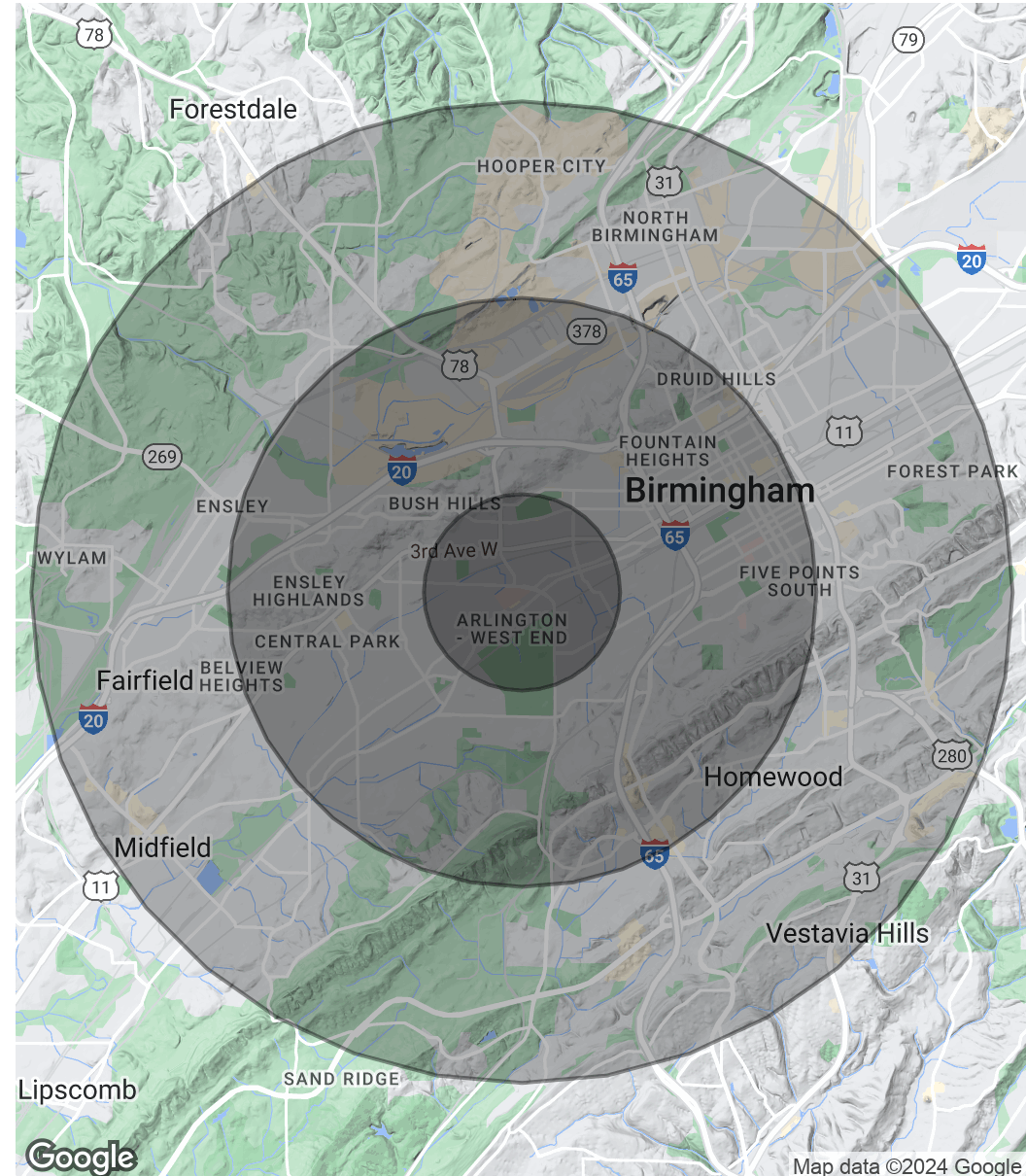
# DEMOGRAPHICS MAP & REPORT



Population	1 Mile	3 Miles	5 Miles
Total Population	11,538	82,805	187,579
Average Age	34.8	36.0	35.0
Average Age (Male)	32.7	34.3	33.7
Average Age (Female)	36.0	37.7	36.1

Households & Income	1 Mile	3 Miles	5 Miles
Total Households	4,666	33,855	77,127
# of Persons per HH	2.5	2.4	2.4
Average HH Income	\$28,010	\$35,918	\$46,046
Average House Value	\$76,342	\$80,085	\$119,291

\* Demographic data derived from 2020 ACS - US Census



**KYLE CHURCH**  
 205.919.1528  
 kyle@lightpointcre.com



Map data ©2024 Google